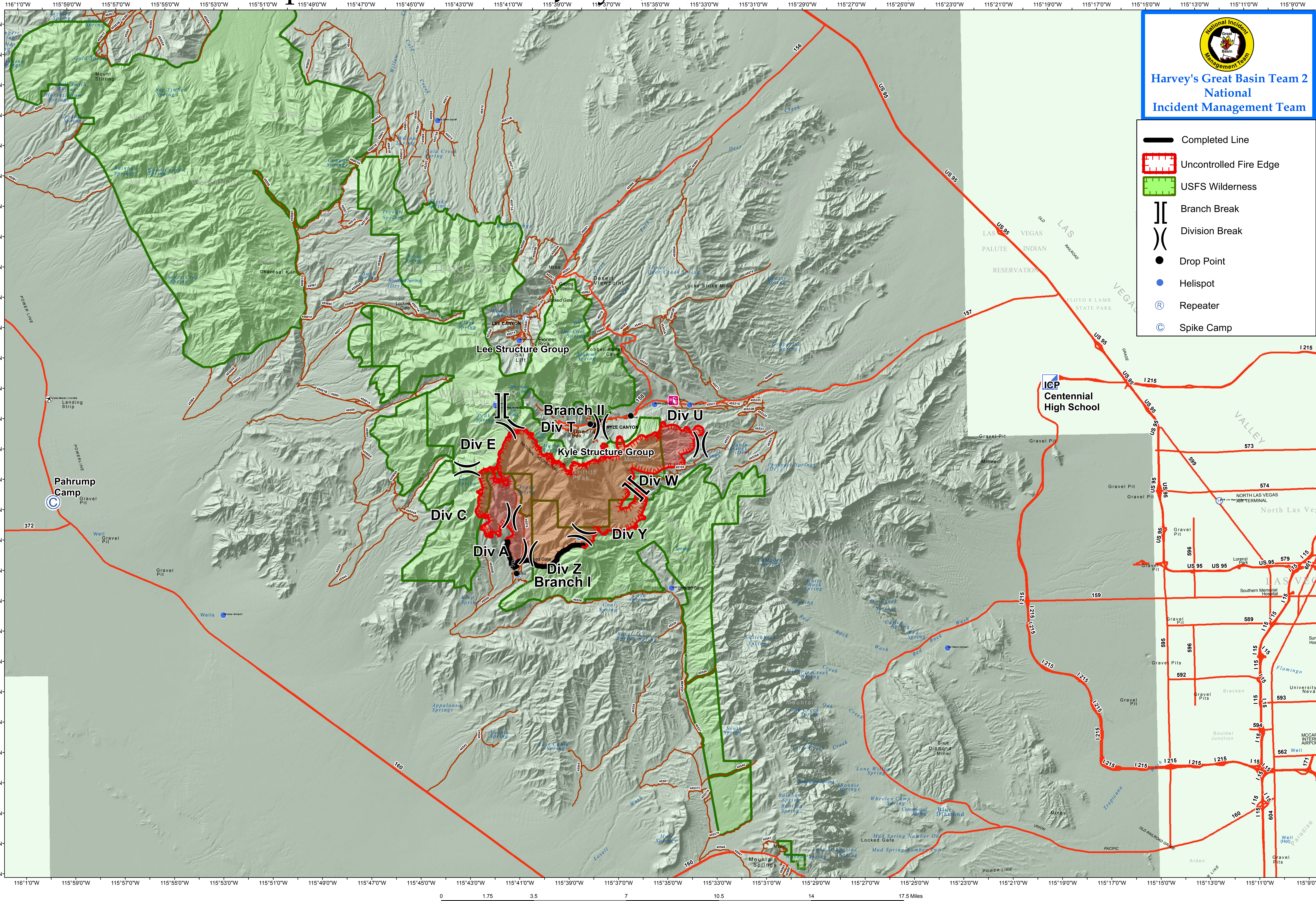


# Carpenter 1 Incident July 8, 2013 0600 Hrs 14,458 Acres



Harvey's Great Basin Team 2  
National Incident Management Team

- Completed Line
- Uncontrolled Fire Edge
- USFS Wilderness
- Branch Break
- Division Break
- Drop Point
- Helispot
- Repeater
- Spike Camp

0 1.75 3.5 7 10.5 14 17.5 Miles