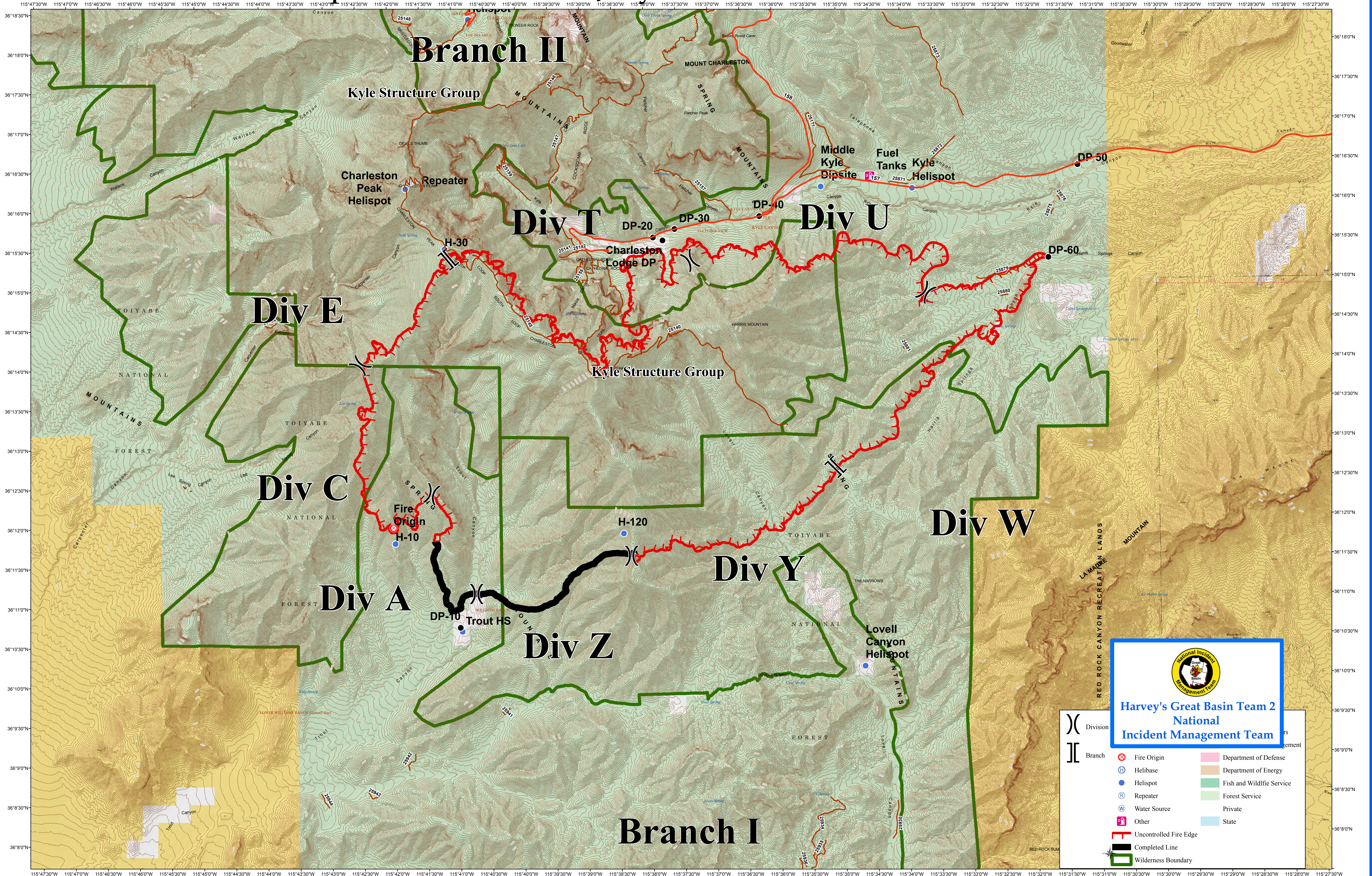


# Carpenter 1 Incident July 9, 2013 0600 Hrs 19,757 Acres



**Harvey's Great Basin Team 2 National Incident Management Team**

(X)	Division	(X)	Fire Origin	(Pink)	Department of Defense
(H)	Branch	(D)	Helibase	(Brown)	Department of Energy
(B)		(H)	Helispot	(Green)	Fish and Wildlife Service
(R)		(R)	Repeater	(Light Green)	Forest Service
(W)		(W)	Water Source	(Light Blue)	Private
(P)		(P)	Other	(Light Blue)	State
(Red Line)		(Red Line)	Uncontrolled Fire Edge		
(Black Line)		(Black Line)	Completed Line		
(Green Line)		(Green Line)	Wilderness Boundary		