

# Carpenter 1 Incident July 9, 2013 0600 Hrs 19,757 Acres

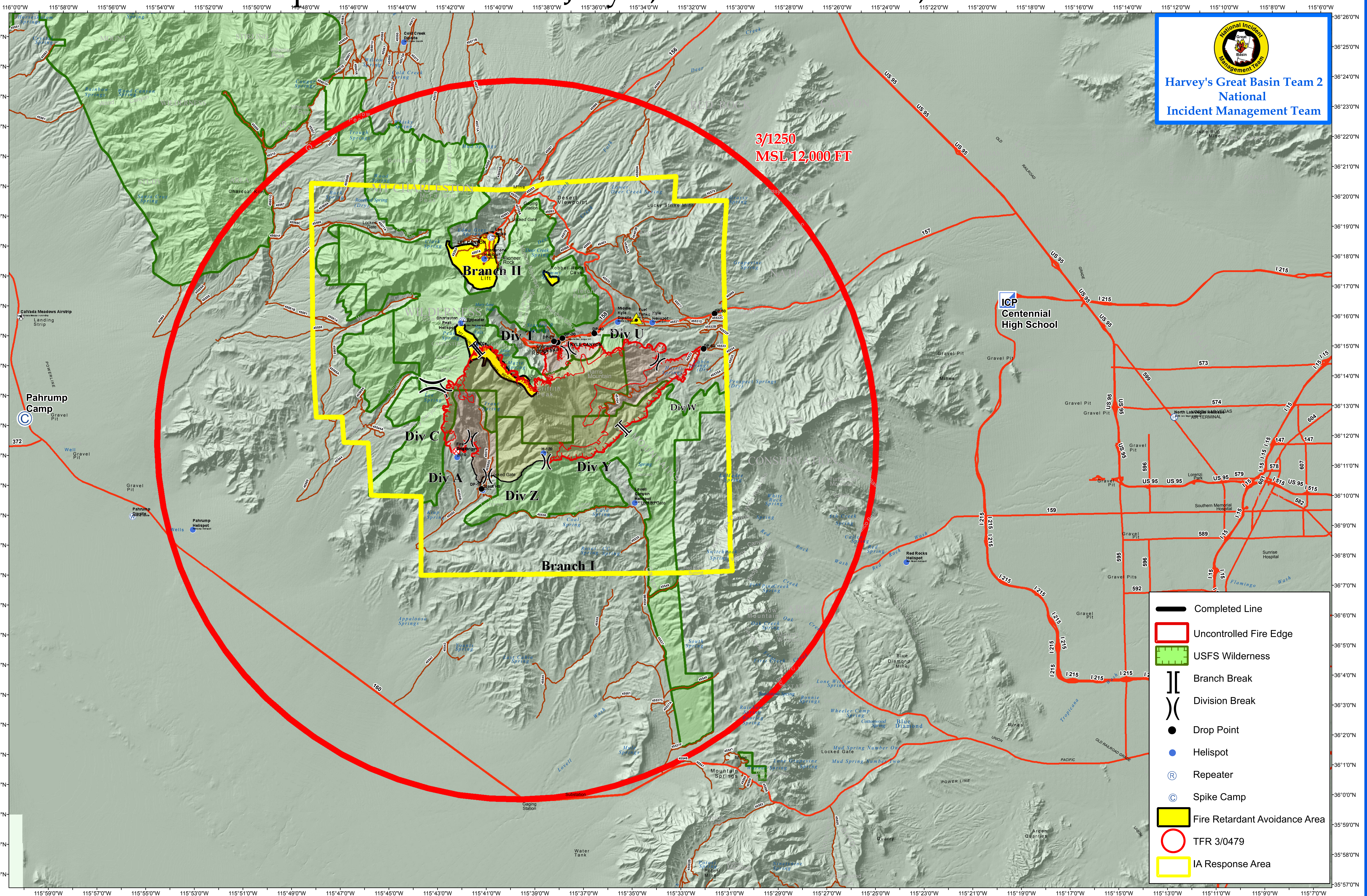


Harvey's Great Basin Team 2  
National  
Incident Management Team

3/1250  
MSL 12,000 FT

ICP  
Centennial  
High School

Pahrump  
Camp



- Completed Line
- Uncontrolled Fire Edge
- USFS Wilderness
- Branch Break
- Division Break
- Drop Point
- Helispot
- Repeater
- Spike Camp
- Fire Retardant Avoidance Area
- TFR 3/0479
- IA Response Area

0 2.5 5 10 15 20 25 Miles