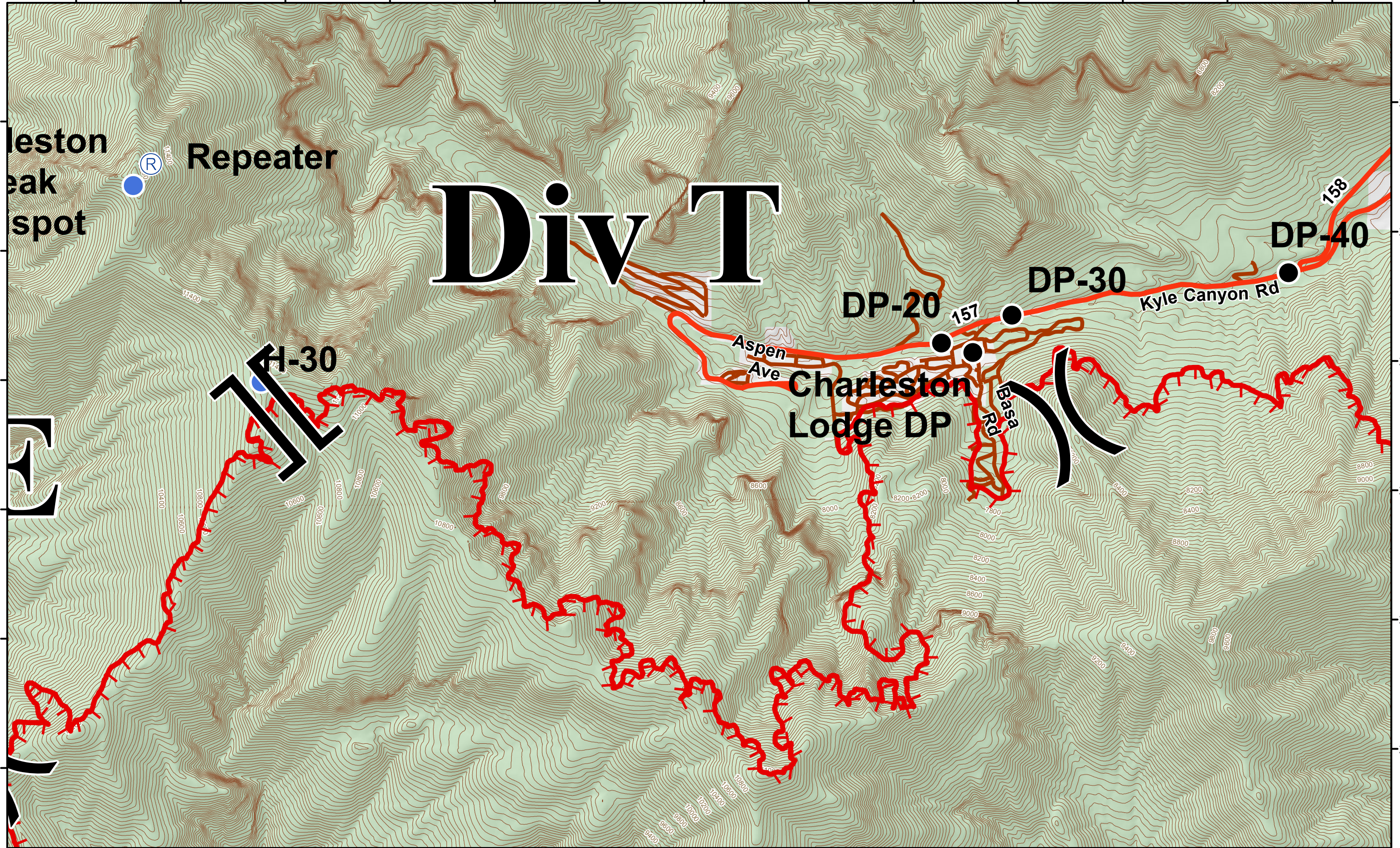


Carpenter 1 Incident July 10, 2013 0600 25,524 Acres

115°42'0"W 115°41'30"W 115°41'0"W 115°40'30"W 115°40'0"W 115°39'30"W 115°39'0"W 115°38'30"W 115°38'0"W 115°37'30"W 115°37'0"W 115°36'30"W 115°36'0"W



36°16'30"N
36°16'0"N
36°15'30"N
36°15'0"N
36°14'30"N
36°14'0"N

36°16'30"N
36°16'0"N
36°15'30"N
36°15'0"N
36°14'30"N
36°14'0"N

115°42'0"W 115°41'30"W 115°41'0"W 115°40'30"W 115°40'0"W 115°39'30"W 115°39'0"W 115°38'30"W 115°38'0"W 115°37'30"W 115°37'0"W 115°36'30"W 115°36'0"W

0 0.5 1 2 3 4 5 Miles