

114°90'W

114°80'W

114°70'W

114°60'W

114°50'W

N

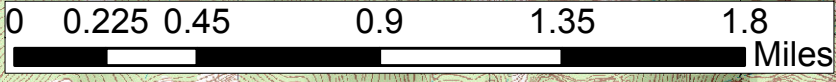
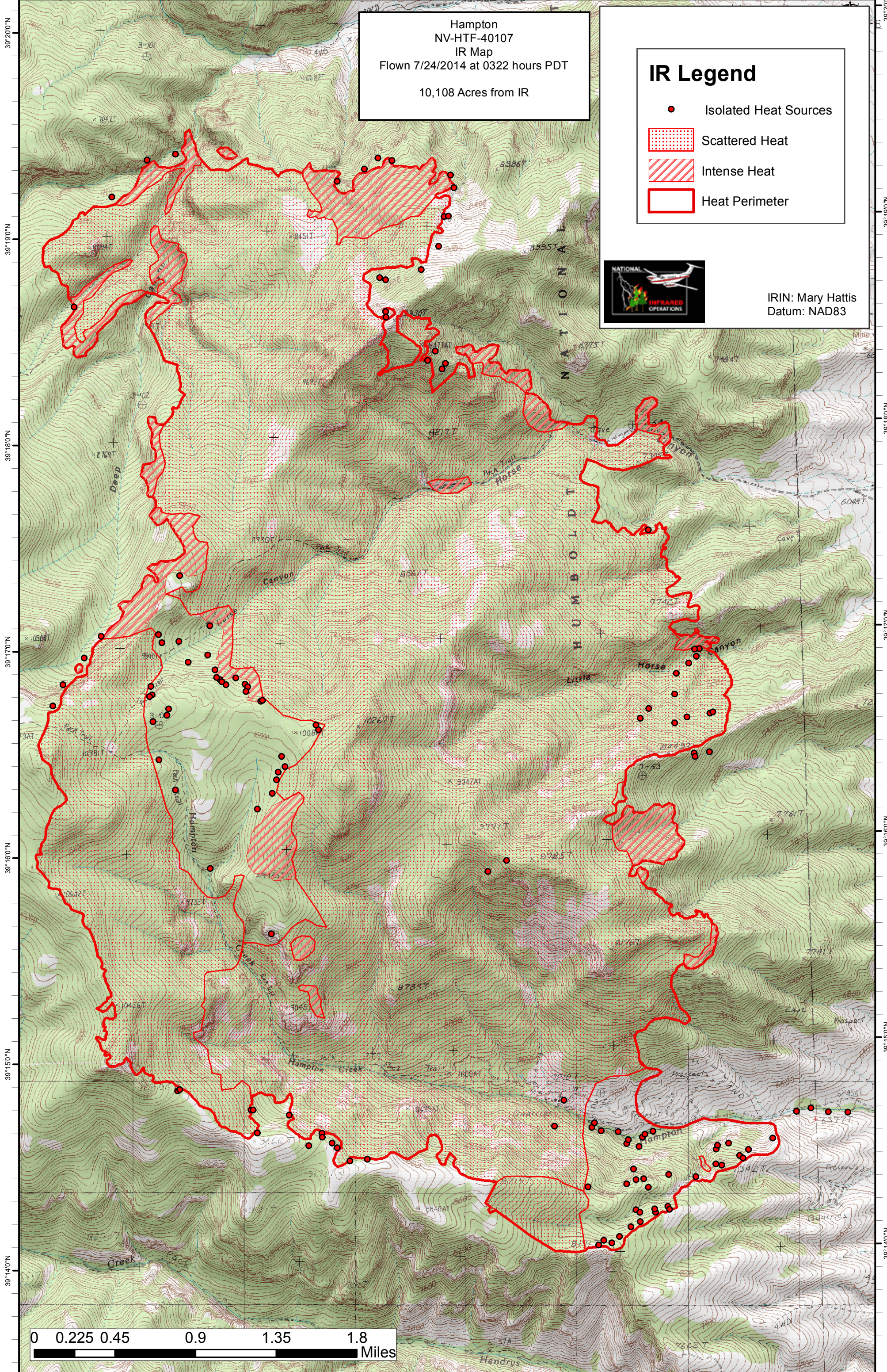
Hampton
 NV-HTF-40107
 IR Map
 Flown 7/24/2014 at 0322 hours PDT
 10,108 Acres from IR

IR Legend

- Isolated Heat Sources
- Scattered Heat
- Intense Heat
- Heat Perimeter



IRIN: Mary Hattis
 Datum: NAD83



114°90'W

114°80'W

114°70'W

114°60'W

114°50'W

39°140'N

39°150'N

39°160'N

39°170'N

39°180'N

39°190'N

39°200'N

39°140'N

39°150'N

39°160'N

39°170'N

39°180'N

39°190'N

39°200'N