

114°90'W

114°80'W

114°70'W

114°60'W

114°50'W


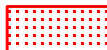







39°20'N
39°19'N
39°18'N
39°17'N
39°16'N
39°15'N
39°14'N

39°20'N
39°19'N
39°18'N
39°17'N
39°16'N
39°15'N
39°14'N

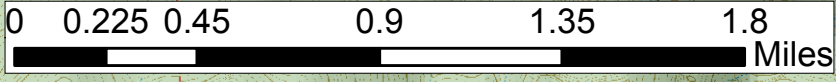
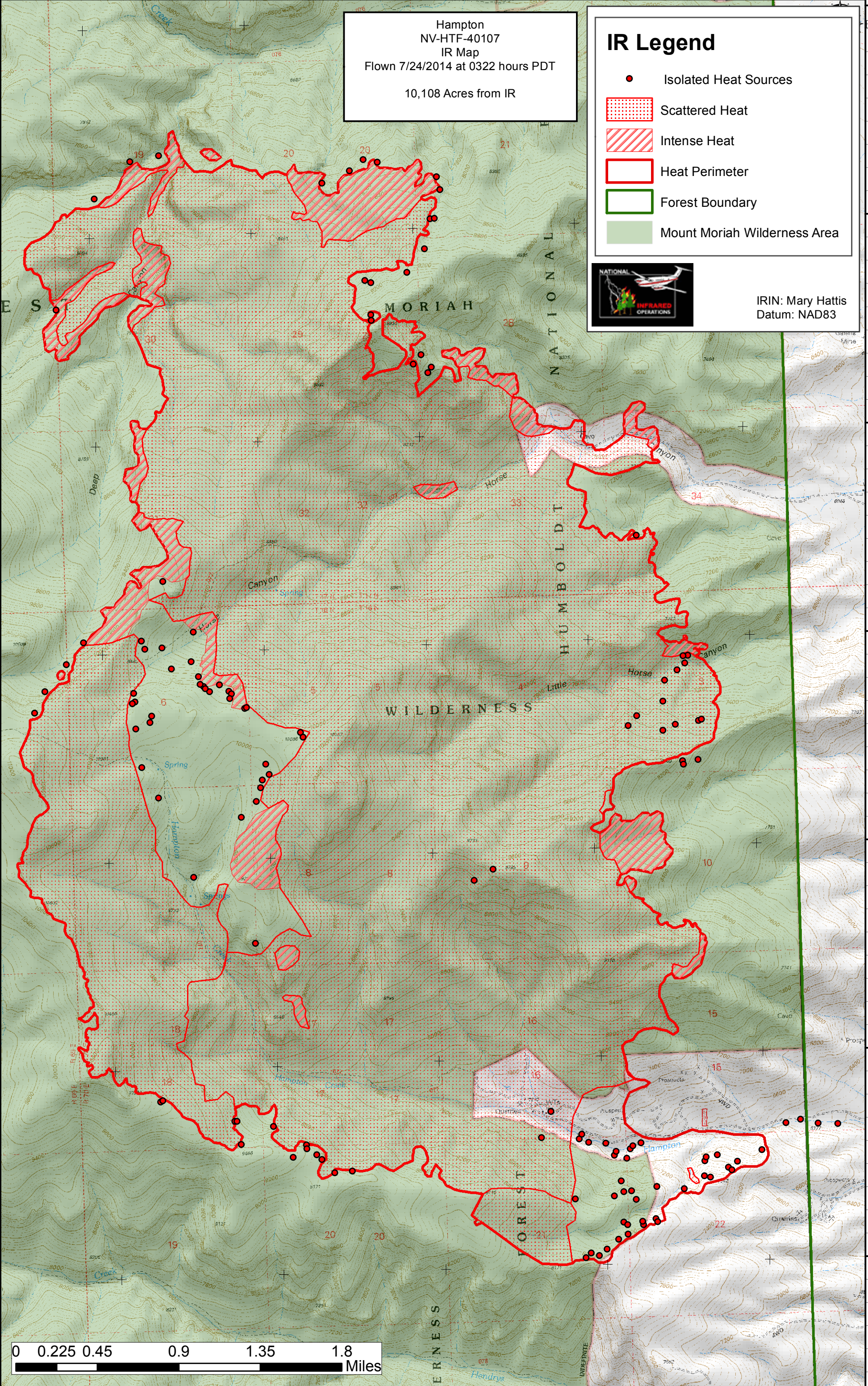
Hampton
NV-HTF-40107
IR Map
Flown 7/24/2014 at 0322 hours PDT
10,108 Acres from IR

IR Legend

-  Isolated Heat Sources
-  Scattered Heat
-  Intense Heat
-  Heat Perimeter
-  Forest Boundary
-  Mount Moriah Wilderness Area



IRIN: Mary Hattis
Datum: NAD83



114°90'W

114°80'W

114°70'W

114°60'W

114°50'W