

119°33'W

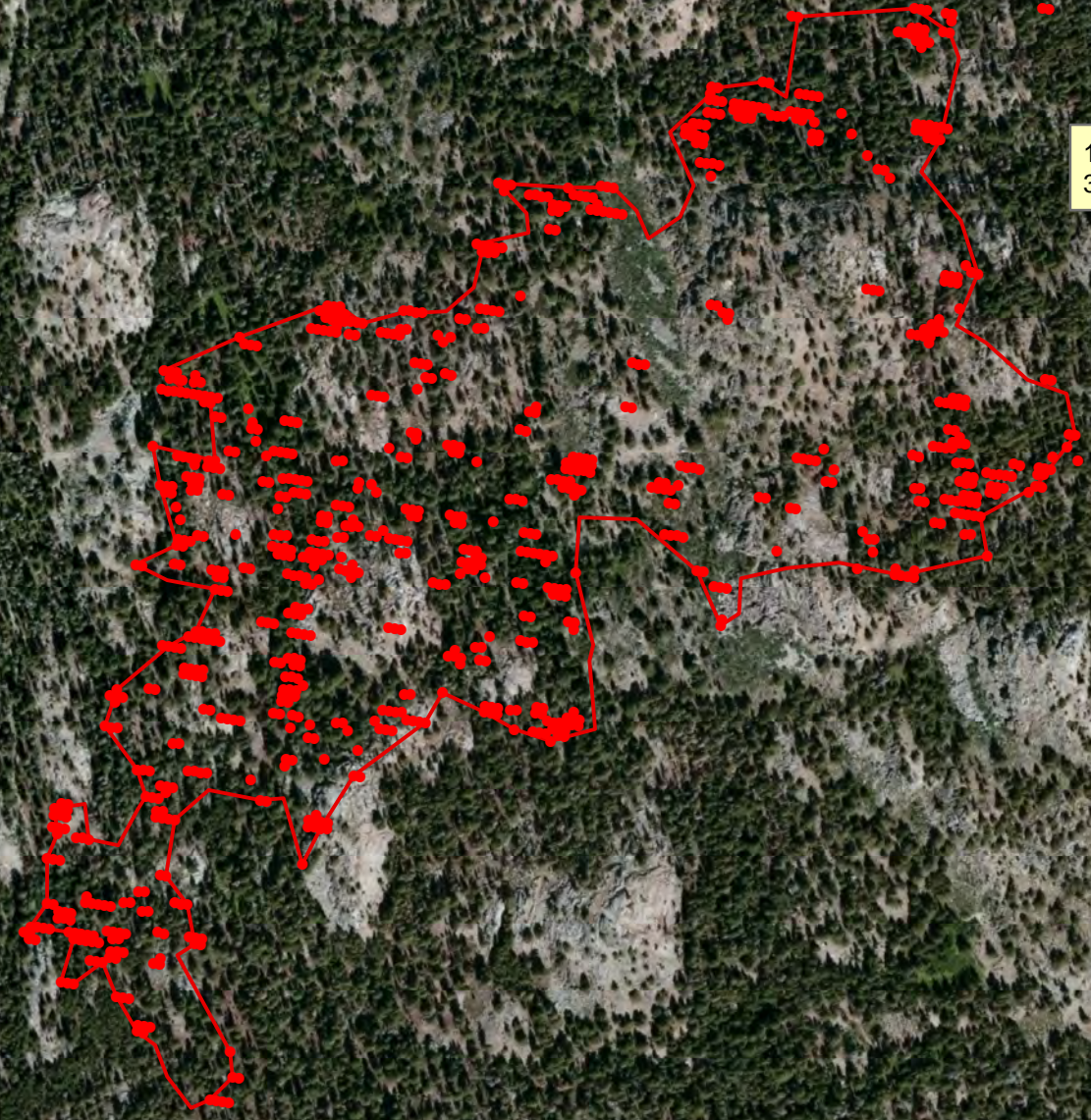
119°32'W





Fremont 65 Acres
NV-HTF-030623
Infrared Interpretation
Imagery Date: 20140918 2150 hr



119° 32.229' W
38° 12.758' N

119° 32.053' W
38° 12.697' N



-  Heat Perimeter
-  Intense Heat Areas
-  Scattered Heat Areas
-  Isolated Heat Sources



Source: Esri, DigitalGlobe, GeoEye, i-cubed, USDA, USGS, AEX, Getmapping, Aerogrid, IGN, IGP, swisstopo, and the GIS User Community

38°12'N

119°33'W

119°32'W