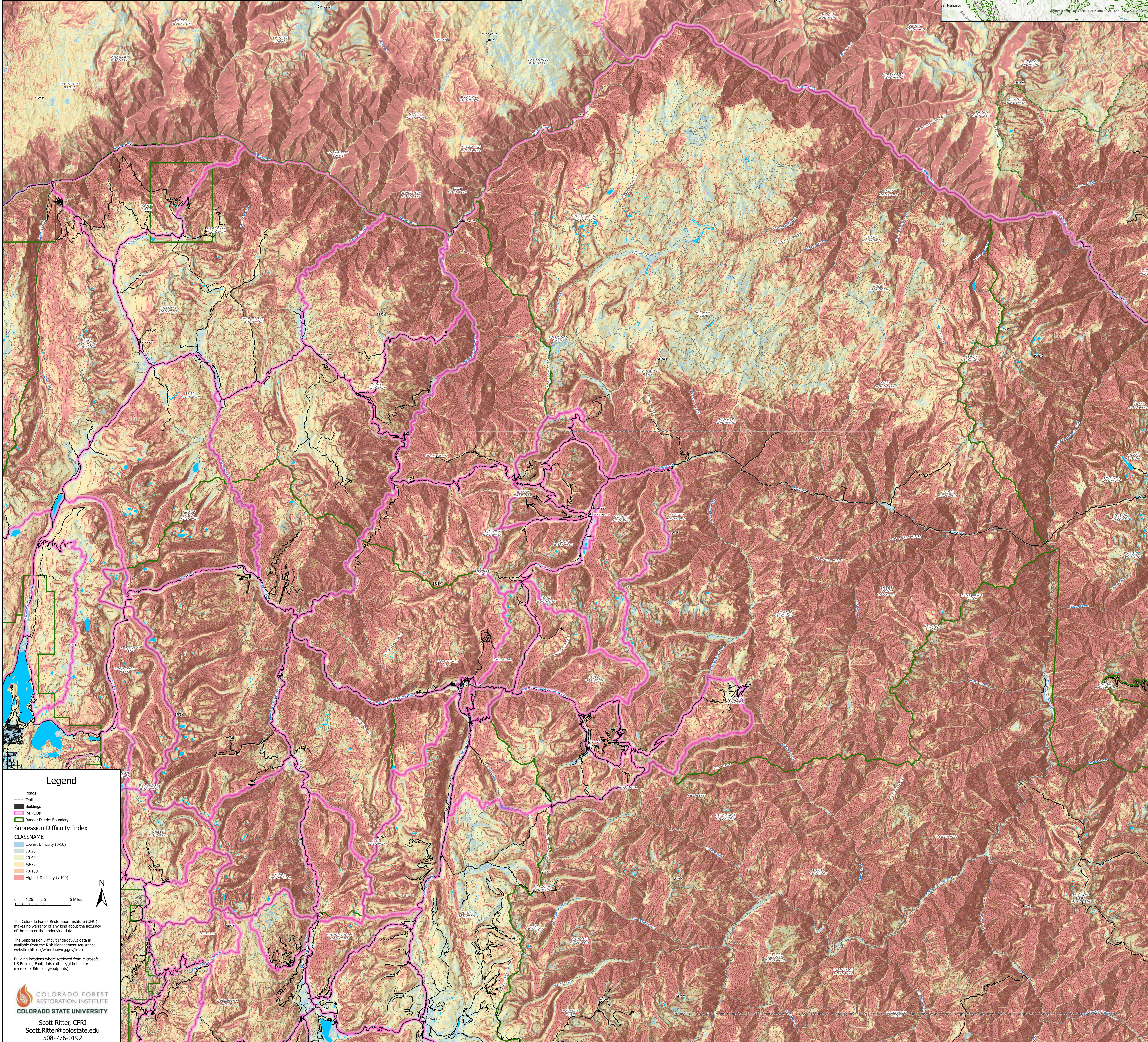
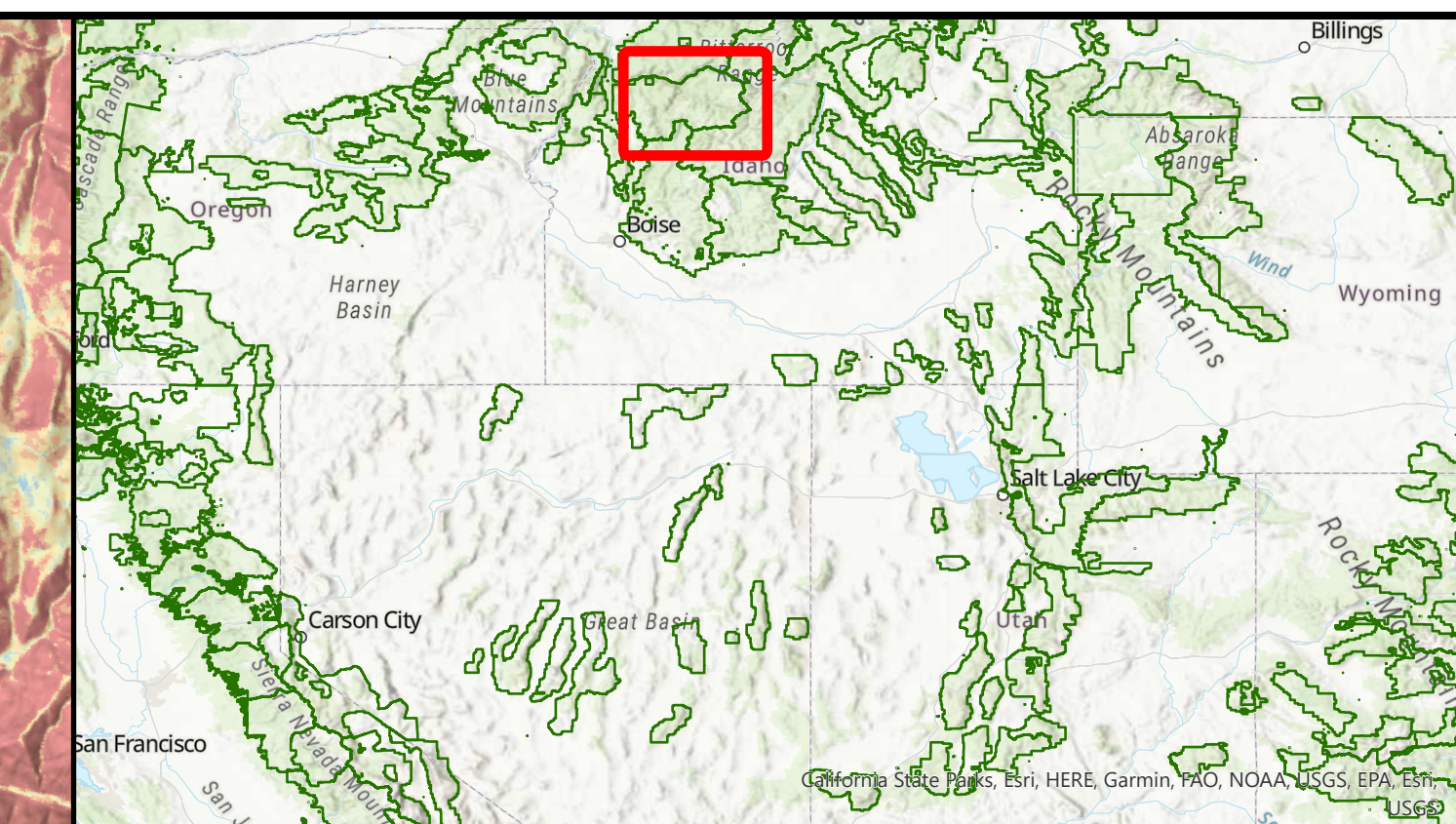


Suppression Difficulty Index

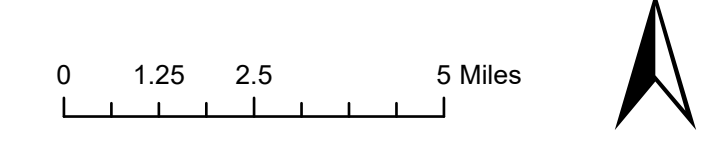
Krassel Ranger District

Payette National Forest



Legend

- Roads
 - Trails
 - Buildings
 - R4 RODs
 - Ranger District Boundary
- Suppression Difficulty Index**
- | CLASSNAME | Color |
|---------------------------|--------------|
| Lowest Difficulty (0-10) | Light Blue |
| 10-20 | Light Green |
| 20-40 | Yellow-Green |
| 40-70 | Yellow |
| 70-100 | Orange |
| Highest Difficulty (>100) | Dark Red |



The Colorado Forest Restoration Institute (CFRI) makes no warranty of any kind about the accuracy of the map or the underlying data.

The Suppression Difficulty Index (SDI) data is available from the Risk Management Assistance website (<https://wfrmda.nwca.gov/rma>)

Building locations were retrieved from Microsoft US Building Footprints (<https://github.com/microsoft/USBuildingFootprints>)