

Shawn Pearson's Incident Management Team

Caribou Fire
MT-KNF-000174
USFS: P1K96G; IDL: FED17617
DNRC: 757008; DOI: K96G

Gibraltar Ridge Fire
MT-KNF-000161
USFS: P1K86W; IDL: FED14517
DNRC: 757005; DOI: K86W

Weasel Fire
MT-KNF-000236
USFS: P1LCQ4

INCIDENT ACTION PLAN Sunday September 17, 2017 DAY SHIFT: 0600-2100

Roadside Incident Response

Nationally, the number of injuries and fatalities among emergency responders who are responding to roadside incidents is increasing at an increasing rate. Although most wildland fires occur in remote areas, there are situations where wildland fire personnel are responding to fires along rural country roads, jeep roads, or major highways; the risk still exists for our firefighters. Below is a checklist of considerations that should be utilized when responding to fires and other incidents along roadsides:

- **Considerations**
 - Firefighter and public safety will always be the number one priority.
 - Utilize L.C.E.S. in all incident activities.
 - Personal Protective Equipment will be used on all incidents.
- **Upon Arrival at the Scene**
Size up incident- see Incident Response Pocket Guide
 - What has happened?
 - What is happening?
 - What will or could happen?
 - Is this a HazMat situation?
- **Risk Management Process-**
 - Decision Point, Go No Go. See the Incident Response Pocket Guide, page 1
- **Tactical Considerations**
 - Anytime traffic flow is affected by the incident, contact the jurisdictional law enforcement agency for assistance.
 - Conduct all operations as far from traffic lanes as possible to provide for crew and public safety.
 - Park units on the same side of the roadway when ever possible to avoid traffic congestion.
 - Personnel do not exit the fire apparatus until instructed to do so by the module leader.
 - Exit the fire apparatus away from the roadway or where hazard exposure is minimized.
 - Exit the fire apparatus with full personal protective equipment.
 - Post a lookout to watch for and control oncoming traffic.
 - Utilize forward and rear spotters when visibility is impaired or road conditions warrant.
 - Utilize and place road flares or other traffic warning signs whenever possible
 - If equipment needs to be removed from the traffic side of the apparatus, one person will retrieve the equipment and a lookout will watch for oncoming traffic.
 - Engine operators will operate pumps from the non-traffic side or from the cab of the apparatus when possible. Keep all hose, fire tools, and equipment out of traffic lanes when possible.
 - During night operations utilize reflective clothing, vests and other safety equipment as necessary.
 - All emergency responses on roadways will be concluded as quickly as possible to reduce personnel exposure.
 - Cancel or demob unnecessary apparatus as soon as possible.

INCIDENT OBJECTIVES

1. Incident Name
Caribou, Gibraltar Ridge and Weasel Fires

2. Date Prepared
09/16/2017

3. Time Prepared
1900

Management Objective:

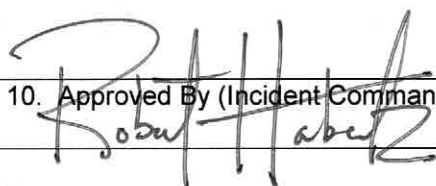
- To execute a modified suppression strategy using aviation and ground resources;
- To use a combination of direct and indirect fire suppression tactics and when applicable, use point and/or zone protection tactics to minimize impacts to values at risk and to limit fire fighter exposure; and
- To provide initial attack response inside the TFRs following consultation/coordination with district FMOs.

Commanders Intent:

- **Safety.** We will ensure for fire fighter, aviation, and public safety. This includes adherence to the work-rest guidelines and monitoring for general fatigue.
- **Risk Management.** We will use a robust risk assessment process to mitigate unnecessary risk to fire fighters and update and/or revise decisions as necessary. We will engage and disengage these fires based upon risk management.
- **Operations.** We will make informed tactical decisions to ensure we are at the right place, using the right resources, for the right reasons.
- **Resource Advisors.** We will work closely with resource advisors to address sensitive cultural and environmental areas. We will ensure for the prevention of aquatic invasive species (AIS) and noxious weeds.
- **Finance.** We will establish and monitor cost effective methods for accomplishing incident objectives.
- **Communication.** We will keep the Agency Administrators informed of significant accomplishments and issues. We will work with our Canadian partners to ensure for fire suppression continuity and aviation coordination.
- **Public Information.** We will provide timely and accurate information through the press, meetings, trap lines, briefings, and social media.
- **Stakeholders.** We will identify key partners and keep them effectively informed of progress and to use their local knowledge. We will utilize local services, vendors, and contractors to the maximum extent possible.
- **Human Resources.** We will ensure that all incident personnel be treated with dignity and respect. We have a zero tolerance for harassment, alcohol, or illegal drug use.

9. Prepared By (Planning Section Chief)

10. Approved By (Incident Commander)



ORGANIZATION ASSIGNMENT LIST ICS-203		9. Operations Section	
1. Incident Name Caribou, Gibraltar Ridge and Weasel Fires		Line Ops	Kevin Chaffee
		Planning Ops	Lance Delgado
		a. CARIBOU	
2. Date 9/16/2017	3. Time 2000	Division/Group ALPHA	Chris Marabetta
		Division/Group MIKE	Phil Millette; Jon Norman (t)
4. Operational Period 9/17 DAY SHIFT 0600-2100		Division/Group ZULU	Dave Schwartz
		Division/Group STRUCTURE	Matt Myers
		Division/Group	
5. Command		CANADA - BCWS (N1-1844)	
Incident Commander	Shawn Pearson; Bob Habeck (t)	Don Pegues	
Deputy		b. GIBRALTER RIDGE	
Safety Officer	Jack Carlson; Breck Hudson	Division/Group GOLF	John Heyn
Information Officer	Jeff Gildehaus	Division/Group TANGO	John Heyn
Liaison Officer	Lance Burns		
6. Agency Representatives		Division/Group NINKO CABIN	Todd Hannan
Agency	Name		
USFS – Kootenai NF	Ron Komac; Kirsten Kaiser		
MT DNRC	Dave Ring	Division/Group WEASEL	unstaffed
MT FWP	Tim Their		
British Columbia	Dennis Rixin	c. STAGING	
BC Line Ops	Don Pegues	Staging Area Manager	
US Border Patrol	Chris Myra		
AK IARR	Doug Mackey; Calvin Moses (t)		
AK CrewAdminRep	Cathy Sweet		
7. Planning Section			
Chief	Patrick Seymour, Will Bernard (t)		
Deputy			
Resources Unit	Jody Pettit		
Situation Unit	Dave Van Natter		
GIS	Bob Kirk (LS 9/21); Allison Klein (LS 9/23)		
Documentation Unit			
Demobilization Unit	Jody Pettit	d. Air Operations Branch	
Status-Check In		Air Ops Branch Director	Hugh Carson
Fire Behavior	Mike Behrens		
ITSP	Ed Yeager	Air Attack Group Supervisor	William Blackburn
Incident Meteorologist	Todd Carter	Air Support Group Supervisor	Scott Robinson
HRSP	Karen Hartman		
Training Specialist	Patrick Seymour		
KNF READ	Annora Nelson; Aaron Martin		
	Dan Ward		
MT DNRC READ	Tye Sundt	10. Finance Section	
Field Observers	Rob Bozeman (LS 9/17)	Chief	Vickie Hulsizer
8. Logistics Section		Time Unit Leader	
Chief	Mike Dugan; Tom Fleer	Cost Unit Leader	Liz Behrends (t)
Deputy		PTRC/EQTR	Bob Drown (LS 9/17)
Supply Unit		EQTR	Carolyn Cross
Facilities Unit	Gordo Oppelt		
Ground Support Unit	Ed Cruise		
Communications Unit	Jerry Haaland	Prepared by	
Communication Tech	T.C. Peterson (t)	Patrick Seymour, PSC2	
Medical Unit	Connie Weeks; Bob Helena (t)		
Security Unit	Kurt Speers (t)		
Food Unit	Joneen Cockman; Joel Clark (t)		
Ordering Manager	Cassie Shortman		
RCDM	John Crain; Perry Stebbins (t)		



Caribou & Gibraltar Ridge Weather Forecast



FORECAST NO: 16

NAME OF FIRE: Caribou & Gibraltar Ridge

PREDICTION FOR: Day SHIFT, Sun. 9/17/17

UNIT: Kootenai NF

SIGNED:

Todd Carter

Incident Meteorologist

TIME AND DATE

FORECAST ISSUED: 2000 Sep. 16 2017

WEATHER DISCUSSION:

...Drier and Warmer Sunday...

Expect another cold morning on Sunday with temperatures at or below freezing in higher and lower elevation valleys. There may be some smoke obscuring the lower valleys until 1100. Otherwise, Sunday will continue the warming trend with light southwest wind on the ridges, temperatures up 5 degrees and relative humidity down 5 degrees. While not critically dry and warm, this weather may affect fire behavior for the day. Monday, another weather system and cold front will bring a chance of showers which will linger into Tuesday. Another wave of moisture Wednesday and Thursday looks to be a better chance of wetting precipitation.

WEATHER FORECAST FOR SUNDAY (DAY-SHIFT):

WEATHER: Partly cloudy. Areas of smoke diminishing around 1100. Then increasing afternoon clouds.

TEMPERATURES: Maximum 62-68 below 4500 ft., 52-58 mid-slopes and ridges.

HUMIDITY: Minimum 22-27% below 4500 ft., 25-32% mid-slopes and ridges.

20 FT WINDS:

RIDGETOP – Southwest 5-10 mph increasing to 15 mph gusting to 25 mph after 1400.

SLOPE/VALLEY – Up slope/valley 4-7 mph gusting to 15 mph after 1500.

STABILITY/MIXING: Strong inversion lifting at 1000. Mixing Heights 6000 Feet AGL.

HAINES INDEX: 3 Very Low.

WEATHER FORECAST FOR SUNDAY NIGHT:

WEATHER: Cloudy with smoke and haze.

TEMPERATURES: Minimum 37-43 lower valleys, mid-slopes and ridges.

HUMIDITY: Maximum 65-75% lower valleys and 75-85% ridges.

20 FT WINDS:

RIDGETOP – Southwest 15 mph gusting to 25 mph in the evening.

SLOPE/VALLEY – Southwest 5-10 mph becoming downslope and valley drainage winds 2-4 mph after midnight.

HAINES INDEX: 2 Very Low.

OUTLOOK FOR MONDAY:

Cloudy with rain. Highs 53-57 below 4500 ft., 45-50 mid-slopes and ridges. Min RH 35-45% below 4500 ft., 45-55% mid-slopes and ridges. CWR 50%.

Winds: Ridgetop – SW 15 mph gusts to 22. Slope/Valley – Variable to 5 mph becoming southwest 4-7 mph.

STABILITY/MIXING: Remaining stable through the day. Afternoon mixing Heights 2000 Feet AGL.

HAINES INDEX: 2 Very Low.

EXTENDED FORECAST (TUESDAY through THURSDAY):

TUESDAY: Mostly cloudy with a chance of showers. Lows 35-45. Highs 40-50. Southwest wind 10-15 mph. CWR 10 percent.

WEDNESDAY and THURSDAY: Cloudy with rain likely. Snow level falling to 6000 feet Wednesday with less than an inch accumulation. Lows 39-46. Highs 40-50. Southwest wind 5-15 mph. CWR 50%.

EXTRA - EXTRA Information: Hurricane Jose coming close to the Northeast Seaboard.



Caribou Incident General Weather Outlook

Planning Forecast made 16 Sept./1730 - Incident Meteorologist (IMET) Todd Carter

Day	Sun	Mon	Tue	Wed	Thu	Fri
	17-Sep	18-Sep	19-Sep	20-Sep	21-Sep	22-Sep
Clouds + Smoke@ 1500 (%)	60	100	70	90	80	60
Avg. Max Temp (F)	61	52	50	49	51	52
Precip Chance (%)	0	70	40	70	60	40
LAL	1	1	1	1	1	1
Ridge Wind (mph)	15	15	15	14	10	10
Wind Direction*	SW	SW	SW	SSW	SSW	WSW
Min Humidity (%)	25	40	40	45	35	35
Haines Index	3	2	2	2	2	2
KEY:	Moderate Burning Conditions		Take Caution - Critical Burning Conditions		Extreme Burning Conditions	
Clouds + Smoke	>24%	15	to	24	<15%	
Avg Max Temp	<75F	75	to	80	>80F	
Precip Chance	>30%	15	to	30	<15%	
LAL	< 3	3			> 3	
Ridge Wind	<15mph	15	to	19	>19mph	
*Wind Direction	Criticality of wind direction	highly dependent on burn operations and/or structures threatened				
Min Humidity	>30%	20	to	30	<20%	
Haines Index	< 4	4			> 4	

Five or more EXTREME blocks in a day equals the potential for a Critical Weather Day

This forecast matrix was developed for the Caribou Wildfire and uses criteria specific for this incident. Every incident will respond to conditions differently and adjustments to the formulas and or categories used may be needed.

FIRE BEHAVIOR FORECAST

FORECAST NUMBER: 18 Day Shift

TYPE OF FIRE: Wildfire

FIRE NAME: Caribou/Gibraltar Ridge/Weasel

OPERATIONAL PERIOD: 09/17/2017 0600-2100

DATE ISSUED: 09/16/2017

TIME ISSUED: 2000

UNIT: Kootenai National Forest

SIGNED: Mike Behrens (FBAN)

INPUTS

WEATHER SUMMARY:

See Attached Weather: **A transition day before arrival of cold front with moisture.....**

OUTPUTS

FIRE BEHAVIOR

GENERAL:

A variety of fire weather conditions will be experienced during the shift....

- Smoke in the AM could delay max Temps and min RHs until later in the day.
- Min RHs around 25% = surface spread will be potentially more active where fine fuels are carrying the fire.
- Areas with heavy down and dead fuels like Lime Creek and the mouth of Williams Creek will continue to hold heat and may become more active.
- Afternoon Winds from the SW will be stronger than previous days and may increase activity on exposed areas.
- Single/group tree torching will be increasingly likely with stronger Winds/Temps and lowered RHs on exposed dry sites and in areas with heavy down-dead fuels.

SPECIFIC:

Division A /Structure Group –if there are any smokes in areas of concern they should pop up today with lower RHs.

- Structure Group with extensive mop-up nearly complete should see no issues.
- Division A may see a few smokes pop-up in the South Fork of the Young Creek drainage because some live fuels may become available because of frost kill.

Divisions M/Z—Both divisions should experience a WSW wind flow because of drainage alignment and SW winds.

- Lime Creek – Fuels will be more receptive to spotting with lower RHs and higher winds and possible frost kill. This area could become more active with the drier conditions and may require continued bucket work.
- Fire that Zulu has checked up on midslope roads should continue to hold with favorable winds but watch for spotting if you have unburned islands near the line.
- Caribou Creek will continue see some backing activity with the lower RHs and increased Temps.

Division G/T—Gibraltar Ridge Fire and Weasel

- Fire activity will continue in Williams Creek and Whale Creek drainages with backing fire and some single tree/group tree torching on steep slopes exposed to wind.
- Weasel will experience similar conditions/fire behavior to Gibraltar Ridge and will continue see interior pockets of unburned fuels clean up.

Open Timber – Caribou only -- best represents regen stands – uncontained fire.

- Areas with Grass /Shrub understories will have a PIG as high as 60% with a FDFM as low as 5%.
- Surface ROS 10-20 ch/h in areas where slope/fuel/winds align.
- Kinnikinnick, grouse whortleberry, sumac, and common juniper are continuing to contribute to fire spread.

Closed Timber stands— Caribou only -- areas with heavy down and dead fuel loading—uncontained fire.

- Surface fire rates of spread should be limited to around 2-5 ch/h. where slope/fuels/align
- Probability of Ign. will be around 40% with a FDFM around 8%.
- Torching will be possible throughout the day when enough heat is built up under the canopies.

AIR OPERATIONS

Air operations may be limited by smoke until about 1100, turbulence may be a problem in the afternoon as clouds arrive.

SAFETY

With freezing temperatures live fuels could add to fire spread instead of inhibit it.

Safety Message

Caribou, Gibraltar Ridge, and Weasel Fires

Sunday 9/17/17

Major Hazards:

- Yellowjackets and bald faced hornets
- Risk of Snags and green hazard trees
- Bears in the fire area
- Weekend traffic

Changed or Changing Conditions:

- The Team continues to shrink in size as resources demob
- Warmer and drier weather with increasing winds

Mitigations:

- ✓ Yellowjackets and other hornets are getting more aggressive. Flag off known nest areas and keep sleeves rolled down at all times.
- ✓ Those people driving through or working in the burn area can expect hazard trees to continue to come down. When you get out to cut a tree across the road, be sure to wear your hardhat and assess the trees in your immediate work area. When felling trees, all other resources must stay two and one half tree lengths away.
- ✓ Do not leave any food items along the fireline or other work areas that may attract bears or make them associate the smell of humans with food. Make noise to warn bears of your approach as you travel.
- ✓ Expect heavier traffic and drive defensively. Keep your speed down, there is no need to be rushing around on the roads. Be courteous and be willing to give the right of way to the traveling public.
- ✓ Fire activity may perk up. Know what your fire is doing at all times. Keep track of your escape routes and safety zones. Plan for orderly disengagement.

Jack, Breck, Todd, and Bruce
Safety Officers

Safety thought for the day:

Good habits can keep you out of bad trouble!!!

ASSIGNMENT LIST			1. Branch	2. Division/Group		
				Alpha		
3. Incident Name			4. Operational Period			
CARIBOU			Date: 09/17/17		Time: 0600 – 2100	
5. Operations Personnel						
Operations Chief		Kevin Chaffee Lance Delgado		Division/Group Supervisor		Chris Marabetta
Air Ops Branch Director		Hugh Carson		Safety Officers		Todd Mott
6. Resources Assigned This Period						
Strike Team/Task Force/ Resource Designator	Last Shift	Leader	No. Pers.	Trans. Needed	Drop Off PT./Time	Pick Up PT./Time
C-26 Nulato 1 HC2	9/22	Stanley Demoski Travis McCabe CREP	19 1	N	ICP / 0600	ICP / 2100
C-27 Upper Tanana 2 HC2	9/22	Leonard Mark Neal Charie Jr CREP	19	N	ICP / 0600	ICP / 2100
TASKFORCE 2						
O-256 TFLD	9/23	Aubrey Aday	1	N	ICP / 0600	ICP / 2100
C-25 Marshall 1 HC2	9/22	Maurice Turet Robbie Stevens CREP	19	N	ICP / 0600	ICP / 2100
E-5 TBC SKG	9/24	Ross Savage	2	N	ICP / 0600	ICP / 2100
E-212 Sundance ENG6	9/24	Emilio Garcia	1	N	ICP / 0600	ICP / 2100
Local Agency Tender WT14			1	N		
E-82 Crane ENG6	9/28	Don Crane	3	N	ICP / 0600	ICP / 2100
E-130 Wilson SKG	9/19	Roger Learn	2	N	ICP / 0600	ICP / 2100
E-129 Flathead SKG	9/20	Tim Smart	2	N	ICP / 0600	ICP / 2100
EMTF		Dave Helmrick Dodge Staging	1	N	ICP / 0600	ICP / 2100
Ambulance ALS Staged at Jct 92 & 474 Rds.		Makenzie Tiegs	2	N	ICP / 0600	ICP / 2100
NOTE: COMMAND 2 WILL BE UNAVAILABLE AFTER 11:00. IF NECESSARY, UTILIZE HUMAN REPEATERS WITH COMMAND 1.						
7. Control Operations						
Task: Hold, patrol and mopup completed fireline.						
Purpose: Limit fire spread to current perimeter.						
End State: Fire contained within existing fireline from 303 rd to DP4.						

8. Special Instructions**All firing operations must be approved by Line OSC.****Coordinate with SE43 (Canadian IC) about fireline location along border.**

To avoid spreading Aquatic Invasive Species (Zebra Mussels, etc.) non-local engines are required to fill from either a water tender or via a pump at drafting site. Please don't draft with your own engine or your pump. Only use the sources provided.

Helicopter bucket work – establish contact with the pilot on air to ground. Use “clock” position to guide the helicopter in. Prior to the drop, clear the area.

Working in Bear Country – remove all food scraps, wrappings, and garbage for the line every day.

Ensure you have LCES in place prior to engaging the fire.

Working near the International Border – coordinate all activities (Air & Ground) with our counterparts in Canada.

9. Division/Group Communication Summary

Function	Frequency - RX	Frequency - TX	Tone	Channel	Comments
Command 2	171.0375	163.8250	131.8	9	Command 2- Caribou link to ICP
Command 3	170.6875	166.5750	131.8	10	Command 3- Caribou link to ICP
Tactical Div/Group	166.7250	166.7250	131.8	1	TAC 1- DIV Alpha
Air to Ground 1	167.9000	167.9000		14	Primary
Air to Ground 2	169.3625	169.3625		15	Secondary
Prepared by (PSC2) Patrick Seymour	Approved by (PSC2) Will Bernard		Date 09/16/17	Time 2000	

ASSIGNMENT LIST		1. Branch	2. Division/Group			
			Mike			
3. Incident Name		4. Operational Period				
CARIBOU		Date: 09/17/17		Time: 0600 – 2100		
5. Operations Personnel						
Operations Chief	Kevin Chaffee Lance Delgado		Division/Group Supervisor	Phil Millette; Jon Norman (T)		
Air Ops Branch Director	Hugh Carson		Safety Officers	Bruce Miller (DMOB 1800)		
6. Resources Assigned This Period						
Strike Team/Task Force/ Resource Designator	Last Shift	Leader	No. Pers.	Trans. Needed	Drop Off PT./Time	Pick Up PT./Time
C-28 R10 T2IA	9/22	Matt Durfey	22	N	ICP / 0600	ICP / 2100
O-164 FELB	9/19	David Grettenberg	1	N	ICP / 0600	ICP / 2100
O-36 HEQB	9/22	Brennan Hauk	1	N	ICP / 0600	ICP / 2100
O-295 HEQB (t)	9/23	Melinie Fince	1	N	ICP / 0600	ICP / 2100
O-321 Brothers FALM	9/19	Brumfield, Fitzpatrick	2	N	ICP / 0600	ICP / 2100
O-349 TFLD	9/27	Mike Lehman	1	N	ICP / 0600	ICP / 2100
E-134 A & C DOZ2	9/19	Shawn Marvin	2	N	ICP / 0600	ICP / 2100
					ICP / 0600	ICP / 2100
E-126 Bodle SKG	9/24	Brad Bodle	1	N	ICP / 0600	ICP / 2100
E-127 SoftTrack SKG3	9/19	Isacc Bliss	1	N	ICP / 0600	ICP / 2100
E-231 Vail ENG6	9/28	Anders Hendrickson	4	N	ICP / 0600	ICP / 2100
E-232 NPT #57 ENG6	9/29	Thomas Samuels	3	N	ICP / 0600	ICP / 2100
E-210 Moovin WTS2	9/24	Frank Kyes	1	N	ICP / 0600	ICP / 2100
E-129 Stoken Logging WTS1	9/26	Dan long	1	N	ICP / 0600	ICP / 2100
EMTF		Jenifer Frasier DP2	1	N	ICP / 0600	ICP / 2100
EMTF		Mike Sowell DP2	1	N	R & R 9/17	
Ambulance ALS Staged at Jct 92 & 474 Rds.		Makenzie Tiegs	2	N	ICP / 0600	ICP / 2100
NOTE: COMMAND 2 WILL BE UNAVAILABLE AFTER 11:00. IF NECESSARY, UTILIZE HUMAN REPEATERS WITH COMMAND 1.						

7. Control Operations**Task:** Continue mopup along completed line. Continue to monitor indirect fireline to assess need to burnout.**Purpose:** Limit fire spread to current perimeter.**End State:** Fire contained within existing fireline from DP4 to DP65.**8. Special Instructions****Coordinate with SE43 (Canadian IC) about fireline location along border.**

To avoid spreading Aquatic Invasive Species (Zebra Mussels, etc.) non-local engines are required to fill from either a water tender or via a pump at drafting site. Please don't draft with your own engine or your pump. Only use the sources provided. Helicopter bucket work – establish contact with the pilot on air to ground. Use "clock" position to guide the helicopter in. Prior to the drop, clear the area.

Working in Bear Country – remove all food scraps, wrappings, and garbage for the line every day.

Ensure you have LCES in place prior to engaging the fire.

Working near the International Border – coordinate all activities (Air & Ground) with our counterparts in Canada.

9. Division/Group Communication Summary

Function	Frequency - RX	Frequency - TX	Tone	Channel	Comments
Command 2	171.0375	163.8250	131.8	9	Command 2- Caribou link to ICP
Command 3	170.6875	166.5750	131.8	10	Command 3- Caribou link to ICP
Tactical Div/Group	166.7750	166.7750	131.8	2	TAC 2 – DIV Mike
Air to Ground 1	167.9000	167.9000		14	Primary
Air to Ground 2	169.3625	169.3625		15	Secondary

Prepared by (PSC2) Patrick Seymour	Approved by (PSC2) Will Bernard	Date 09/16/17	Time 2000
---------------------------------------	------------------------------------	------------------	--------------

ASSIGNMENT LIST		1. Branch	2. Division/Group				
3. Incident Name		4. Operational Period					
CARIBOU		Date: 09/17/17			Time: 0600 – 2100		
5. Operations Personnel							
Operations Chief	Kevin Chaffee Lance Delgado		Division/Group Supervisor	Dave Schwartz			
Air Ops Branch Director	Hugh Carson		Safety Officers	Bruce Miller (DMOB 1800)			
6. Resources Assigned This Period							
Strike Team/Task Force/ Resource Designator	Last Shift	Leader	No. Pers.	Trans. Needed	Drop Off PT./Time	Pick Up PT./Time	
C-12 Pioneer Peak IHC	9/19	Kris Baumgartner	23	N	ICP / 0600	ICP / 2100	
O-169 TFLD (t)	9/17	Evan Ratcliffe	1	N	ICP / 0600	ICP / 2100	
O-342 HEQB	9/29	Russell Newman	1	Y	ICP / 0600	ICP / 2100	
O-347 HEQB (t)	9/29	James Kujala	1	Y	ICP / 0600	ICP / 2100	
O-348 TFLD	9/27	Fred Tucker	1	N	ICP / 0600	ICP / 2100	
E-1 Rayson EXCA w Masticator	9/26	Jayson Anderson	1	N	ICP / 0600	ICP / 2100	
E-30 Vincent EXCA2	9/12	Cooper Brown	2	N	ICP / 0600	ICP / 2100	
E-9 Stoken DOZ2	9/24	Mike Stoken	1	N	ICP / 0600	ICP / 2100	
E-174 Ten Lakes Forestry TDMP	9/23	Jeff Totten	1	N	ICP / 0600	ICP / 2100	
E-36 Remp TDMP	9/20	Eric Vitof	1	N	ICP / 0600	ICP / 2100	
E-219 SGS Northwest ENG6	9/26	Jeanne Sherlock	2	N	ICP / 0600	ICP / 2100	
E-97 National Wildland ENG4	9/18	Roger Hawthorne	3	N	ICP / 0600	ICP / 2100	
E-230 Butler ENG6	9/28	Daniel Phariss	2	N	ICP / 0600	ICP / 2100	
E-118 Devils Lake ENG4	9/20	Ryan Williams	4	N	ICP / 0600	ICP / 2100	
E-209 McCully WTS2	9/24	Ron Koski	1	N	ICP / 0600	ICP / 2100	
EMPF		Soren Koetter DP75	1	N	ICP / 0600	ICP / 2100	
Ambulance ALS Staged at Jct 92 & 474 rds.		Makenzie Tiegs	2	N	ICP / 0600	ICP / 2100	
<p>NOTE: COMMAND 2 WILL BE UNAVAILABLE AFTER 11:00. IF NECESSARY, UTILIZE HUMAN REPEATERS WITH COMMAND 1.</p>							

7. Control Operations

Task: Cleanup and chip debris along indirect lines. Continue to monitor fires progression along SW flank to assess needs for additional line construction or burnout.

Purpose: Create a defensible fireline along road system.

End State: Keep fire East of FS rd 6810. Fire contained within existing direct fireline.

8. Special Instructions

Coordinate with SE43 (Canadian IC) about fireline location along border.

To avoid spreading Aquatic Invasive Species (Zebra Mussels, etc.) non-local engines are required to fill from either a water tender or via a pump at drafting site. Please don't draft with your own engine or your pump. Only use the sources provided
 Helicopter bucket work – establish contact with the pilot on air to ground. Use "clock" position to guide the helicopter in.
 Prior to the drop, clear the area.

Working in Bear Country – remove all food scraps, wrappings, and garbage for the line every day.

Ensure you have LCES in place prior to engaging the fire.

Working near the International Border – coordinate all activities (Air & Ground) with our counterparts in Canada.

9. Division/Group Communication Summary

Function	Frequency - RX	Frequency - TX	Tone	Channel	Comments
Command 2	171.0375	163.8250	131.8	9	Command 2- Caribou link to ICP
Command 3	170.6875	166.5750	131.8	10	Command 3- Caribou Link to ICP
Tactical Div/Group	168.2500	168.2500	131.8	3	TAC 3- DIV Zulu
Air to Ground 1	167.9000	167.9000		14	Primary
Air to Ground 2	169.3625	169.3625		15	Secondary

Prepared by (PSC2) Patrick Seymour	Approved by (PSC2) Will Bernard	Date 09/16/17	Time 2000
---------------------------------------	------------------------------------	------------------	--------------

ASSIGNMENT LIST		1. Branch	2. Division/Group Structure Protection				
3. Incident Name CARIBOU		4. Operational Period Date: 09/17/17			Time: 0600 – 2100		
5. Operations Personnel							
Operations Chief	Kevin Chaffee Lance Delgado		Division/Group Supervisor	Matt Myers			
Air Ops Branch Director	Hugh Carson		Safety Officers	Jack Carlson Breck Hudson			
6. Resources Assigned This Period							
Strike Team/Task Force/ Resource Designator	Last Shift	Leader	No. Pers.	Trans. Needed	Drop Off PT./Time	Pick Up PT./Time	
C-24 Fairbanks 1 HC2	9/22	Eric Weter Lafe Martin CREP	19	N	ICP / 0600	ICP / 2100	
C-12.2 TFLD (t)	9/19	Gunderson Pioneer IHC	1	N	ICP / 0600	ICP / 2100	
O-265 TFLD	9/23	Mike Peck	1	N	ICP / 0600	ICP / 2100	
O-331 HEQB	9/26	John Gaddess	1	N	ICP / 0600	ICP / 2100	
E-34 Lauer WTS2	9/22	Don Whitmarsh	1	N	ICP / 0600	ICP / 2100	
E-117 Axxess Fire-22 ENG6	9/22	Shane Sexton	3	N	ICP / 0600	ICP / 2100	
E-123 FRX – R41 ENG6	9/23	Dan Oakley	3	N	ICP / 0600	ICP / 2100	
E-81 Shea ENG6	9/24	Theresa Shea	2	N	ICP / 0600	ICP / 2100	
E-154 Solomon ENG6	9/22	Granville Hawley	3	N	ICP / 0600	ICP / 2100	
E-173 Stoken EXC3	9/22	Tim Obrien	1	N	ICP / 0600	ICP / 2100	
E-28 Vranizan EXC3	9/27	Dillon Savage	2	N	ICP / 0600	ICP / 2100	
Ambulance ALS Staged at Jct 92 & 474 rds.		Makenzie Tiegs	2	N	ICP / 0600	ICP / 2100	
EMPF		Susan Kolp DP27	1	N	ICP / 0600	ICP / 2100	
7. Control Operations							
<ul style="list-style-type: none"> Task: Continue mopup around structures and along current fire perimeter. Begin rehab of indirect fireline. Begin removal and backhaul of pumps and hoselays as needed. Purpose: Avoid loss of private property and provide for public safety. End State: Successful protection of private property. 							
8. Special Instructions							
<p>Coordinate with SE43 (Canadian IC) about fireline location along border. To avoid spreading Aquatic Invasive Species (Zebra Mussels, etc.) non-local engines are required to fill from either a water tender or use a pump at drafting site. Please don't draft with your own engine or your pump. Only use the sources provided. Helicopter bucket work – establish contact with the pilot on air to ground. Use "clock" position to guide the helicopter in. Prior to the drop, clear the area. Working in Bear Country – remove all food scraps, wrappings, and garbage for the line every day. Ensure you have LCES in place prior to engaging the fire. Working near the International Border – coordinate all activities (Air & Ground) with our counterparts in Canada.</p>							
9. Division/Group Communication Summary							
Function	Frequency - RX	Frequency - TX	Tone	Channel	Comments		
Command 2	171.0375	163.8250	131.8	9	Command 2- Caribou link to ICP		
Command 3	170.6875	166.5750	131.8	10	Command 3- Caribou link to ICP		
Tactical Div/Group	168.0500	168.0500	131.8	6	TAC 6 – DIV Structure		
Air to Ground 1	167.9000	167.9000		14	Primary		
Air to Ground 2	169.3625	169.3625		15	Secondary		
Prepared by (PSC2) Patrick Seymour	Approved by (PSC2) Will Bernard			Date 09/16/17	Time 2000		

ASSIGNMENT LIST		1. Branch	CANADA-BC			2. Division/Group
3. Incident Name		4. Operational Period			BCWS (N1-1844)	
CARIBOU-NORTH BRANCH		Date: 09/17/17			Time: 0600 – 2100	
5. Operations Personnel						
Operations Chief	Don Pegues SE43 250-837-8981		Division/Group Supervisor			
Air Support Group Supervisor			Safety Officers			
6. Resources Assigned This Period						
Strike Team/Task Force/ Resource Designator	Last Shift	Leader	No. Pers.	Trans. Needed	Drop Off PT./Time	Pick Up PT./Time
Rocky Mtn. UC			16			
Contract Crew on Order			6		Eta 9/2	
TFLD		Randy Polacik	1			
Shubert Water Tender						
SE Disposal Tender						
East						
D8 Doz						
Excavator						
Lowboy						
West						
D8 Doz						
Excavator						
7. Control Operations						
Task:						
Purpose:						
End State:						
8. Special Instructions						
Canada Aviation: 1 – B205 WSW; 1 – B206 WWP						
US Side EAST SIDE is DIVision Structure- Matt Myers WEST SIDE is DIVision ZULU- Dave Schwartz						
9. Division/Group Communication Summary						
Function	Frequency - RX	Frequency - TX	Tone	Channel	Comments	
Command						
Tactical Div/Group						
Air to Ground 1						
Air to Ground 2						
Prepared by (RESL) Patrick Seymour		Approved by (PSC2) Will Bernard		Date 09/16/17		Time 2000

ASSIGNMENT LIST			1. Branch		2. Division/Group		
3. Incident Name			4. Operational Period				
GIBRALTER			Date: 09/17/17		Time: 0600 – 2100		
5. Operations Personnel							
Operations Chief		Kevin Chaffee Lance Delgado		Division/Group Supervisor		John Heyn	
Air Ops Branch Director		Hugh Carson		Safety Officers		Breck Hudson Jack Carlson	
6. Resources Assigned This Period							
Strike Team/Task Force/ Resource Designator	Last Shift	Leader	No. Pers.	Trans. Needed	Drop Off PT./Time	Pick Up PT./Time	
E-4 C2M2-642 ENG6	9/21	Greg Miller	3	N	ICP / 0600	ICP / 2100	
E-119 Nax Brush 11 ENG6	9/21	Dorothy Atkinson	3	N	ICP / 0600	ICP / 2100	
IMST		Theresa Hafen DP10	1	N	ICP / 0600	ICP / 2100	
7. Control Operations							
TASK: To protect private property and other values at risk. Monitor and patrol 756 rd.							
8. Special Instructions							
To avoid spreading Aquatic Invasive Species (Zebra Mussels, etc.) non-local engines are required to fill from either a water tender or via a pump at drafting site. Please don't draft with your own engine or your pump. Only use the sources provided.							
Helicopter bucket work – establish contact with the pilot on air to ground. Use "clock" position to guide the helicopter in. Prior to the drop, clear the area.							
Working in Bear Country – remove all food scraps, wrappings, and garbage for the line every day.							
Ensure you have LCES in place prior to engaging the fire.							
9. Division/Group Communication Summary							
Function	Frequency - RX	Frequency - TX	Tone	Channel	Comments		
COMMAND 1	168.0750	170.4250	131.8	8	Gibraltar link to ICP on Marston		
TACTICAL/ DIV GROUP	168.2000	168.2000	131.8	5	TAC 5 – DIV Golf		
AIR TO GROUND 1	167.9000	167.9000		14	Primary		
AIR TO GROUND 2	169.3625	169.3625		15	Secondary		
Prepared by (PSC2) Patrick Seymour		Approved by (PSC2) Will Bernard		Date 09/16/17		Time 2000	

ASSIGNMENT LIST			1. Branch		2. Division/Group	
GIBRALTER			Date: 09/17/17		Time: 0600 – 2100	
5. Operations Personnel						
Operations Chief		Kevin Chaffee Lance Delgado	Division/Group Supervisor		John Heyn	
Air Ops Branch Director		Hugh Carson	Safety Officers		Breck Hudson Jack Carlson	
6. Resources Assigned This Period						
Strike Team/Task Force/ Resource Designator	Last Shift	Leader	No. Pers.	Trans. Needed	Drop Off PT./Time	Pick Up PT./Time
E-122.10 TFLD	9/23	Heath Serres	1	N	ICP / 0600	ICP / 2100
O-266 HEQB	9/22	Pilkington	1	N	ICP / 0600	ICP / 2100
E-96 TMT Fire – 281 ENG6	9/25	Tom Tymon	3	N	ICP / 0600	ICP / 2100
E-122 NAX–Brush 7-4 ENG6	9/23	Darin Pepple	2	N	ICP / 0600	ICP / 2100
E-35 Stoken EXCA3	9/29	Burt Liebig	1	N	ICP / 0600	ICP / 2100
E-16 B & D Excavation WTS2	9/23	Dale Carter	1	N	ICP / 0600	ICP / 2100
E-167 Groundhog Chipper	9/22	Nathan Hunt	2	N	ICP / 0600	ICP / 2100
E-168 RAC Chipper	9/23	Dave Orr Jason Clemuns	2	N	ICP / 0600	ICP / 2100
		KNF #82 ENG6	3	N	ICP / 0600	ICP / 2100
					ICP / 0600	ICP / 2100
		IMST	1	N	ICP / 0600	ICP / 2100
7. Control Operations						
TASK: Keep fire in Williams Cr, East of Krag Peak Ridge. Continue chipping 7019 rd in Williams Cr. Utilize Aviation resources to check fire spread in Williams Cr North of Krag Peak.						
Purpose: Protect private property values and limit fire spread.						
End State: No loss of private property. Fire contained between Graves Cr and Williams Cr.						
8. Special Instructions						
To avoid spreading Aquatic Invasive Species (Zebra Mussels, etc.) non-local engines are required to fill from either a water tender or via a pump at drafting site. Please don't draft with your own engine or your pump. Only use the sources provided. Helicopter bucket work – establish contact with the pilot on air to ground. Use "clock" position to guide the helicopter in. Prior to the drop, clear the area.						
Working in Bear Country – remove all food scraps, wrappings, and garbage for the line every day.						
Ensure you have LCES in place prior to engaging the fire.						
9. Division/Group Communication Summary						
Function	Frequency - RX	Frequency - TX	Tone	Channel	Comments	
COMMAND 1	168.0750	170.4250	131.8	8	Gibraltar link to ICP on Marston	
TACTICAL DIV/GROUP	168.6000	168.6000	131.8	4	TAC 4 - DIV Tango	
AIR TO GROUND 1	167.9000	167.9000		14	Primary	
Air to Ground 2	169.3625	169.3625		15	Secondary	
Prepared by (RESL) Patrick Seymour		Approved by (PSC2) Will Bernard		Date 09/16/17		Time 2000

ASSIGNMENT LIST		1. Branch	2. Division/Group			
			NINKO CABIN			
3. Incident Name		4. Operational Period				
GIBRALTER (Flathead NF)		Date: 09/17/17		Time:		
5. Operations Personnel						
Operations Chief		Division/Group Supervisor				
Air Ops Branch Director		Safety Officers				
Hugh Carson						
6. Resources Assigned This Period						
Strike Team/Task Force/ Resource Designator	Last Shift	Leader	No. Pers.	Trans. Needed	Drop Off PT./Time	Pick Up PT./Time
TFLD		Todd Hannan	1	N		
Flathead #E-671 ENG6		Jeff Barker	3	N		
Siderius FEL1		Barry Waldusky	1	N		
Siderius SKD		Dan Siderius	2	N		
E-186 Keller Log Trk Self Ld		Tye Keller	1	N		
E-190 ALCAL Log Truck		Calvan VanHorn	1	N		
E-188 Keller Loader		Rick Morgan	1	N		
7. Control Operations						
TASK: Monitor fire activity to the East and down slope into Whale Cr drainage. Implement structure and improvement measures at Ninko Cabin and bridges in the area.						
8. Special Instructions						
Communications through Thoma Lookout on command. Consult with resource advisor on vegetation treatment around Ninko Cabin						
9. Division/Group Communication Summary						
Function	Frequency - RX	Frequency - TX	Tone	Channel	Comments	
COMMAND 1	168.0750	170.4250	131.8	8	Gibraltar link to ICP on Marston	
TACTICAL/ DIV GROUP	168.2000	168.2000	131.8	5	TAC 5 – DIV Golf	
AIR TO GROUND 1	167.9000	167.9000		14	Primary	
AIR TO GROUND 2	169.3625	169.3625		15	Secondary	
Prepared by (RESL) Patrick Seymour		Approved by (PSC2) Will Bernard		Date 09/16/17		Time 2000

ASSIGNMENT LIST		1. Branch		2. Division/Group		
3. Incident Name WEASEL		4. Operational Period Date: 09/17/17 Time: 0600 – 2100				
5. Operations Personnel						
Operations Chief	Kevin Chaffee Lance Delgado		Division/Group Supervisor			
Air Ops Branch Director	Hugh Carson		Safety Officers			
6. Resources Assigned This Period						
Strike Team/Task Force/ Resource Designator	Last Shift	Leader	No. Pers.	Trans. Needed	Drop Off PT./Time	Pick Up PT./Time
7. Control Operations						
TASK: Utilize air resources to check fire spread. Monitor fire progression and check fire spread as needed. Purpose: Prevent fire from impacting values at risk on the KNF and FNF.						
8. Special Instructions						
To avoid spreading Aquatic Invasive Species (Zebra Mussels, etc.) non-local engines are required to fill from either a water tender or via a pump at drafting site. Please don't draft with your own engine or your pump. Only use the sources provided. Helicopter bucket work – establish contact with the pilot on air to ground. Use "clock" position to guide the helicopter in. Prior to the drop, clear the area. Working in Bear Country – remove all food scraps, wrappings, and garbage for the line every day. Ensure you have LCES in place prior to engaging the fire.						
9. Division/Group Communication Summary						
Function	Frequency - RX	Frequency - TX	Tone	Channel	Comments	
COMMAND 1	168.0750	170.4250	131.8	8	Gibraltar link to ICP on Marston	
TACTICAL/ DIV GROUP	168.2000	168.2000	131.8	5	TAC 5 – DIV Golf	
AIR TO GROUND 1	167.9000	167.9000		14	Primary	
AIR TO GROUND 2	169.3625	169.3625		15	Secondary	
Prepared by (RESL) Patrick Seymour	Approved by (PSC2) Will Bernard		Date 09/16/17		Time 2000	

ASSIGNMENT LIST		1. Branch	2. Division/Group CG Staging				
3. Incident Name CARIBOU-GIBRALTER		4. Operational Period Date: 09/17/17			Time: 0600 – 2100		
5. Operations Personnel							
Operations Chief	Kevin Chaffe Lance Delgado		Staging Area Manager				
Air Ops Branch Director	Hugh Carson		Safety Officers		Jack Carlson Breck Hudson		
6. Resources Assigned This Period							
Strike Team/Task Force/ Resource Designator	Last Shift	Leader	No. Pers.	Trans. Needed	Drop Off PT./Time	Pick Up PT./Time	
E-78 Schlegel LOWB	9/28	John Medley	1	N	ICP / 0600	ICP / 2100	
E-33 Erickson WTS2	9/25	Trevor Weast	1	N	ICP / 0600	ICP / 2100	
MEDL		Connie Weeks Medical Unit location	1	N	ICP / 0600	ICP / 2100	
MEDL (t)		Bob Helena Medical Unit location	1	N	ICP / 0600	ICP / 2100	
7. Control Operations							
Staged Resources are to be prepared to respond to request for work.							
8. Special Instructions							
See Commo Plan.							
To avoid spreading Aquatic Invasive Species (Zebra Mussels, etc.) non-local engines are required to fill from either a water tender or use a pump at drafting site. Please don't draft with your own engine or your pump. Only use the sources provided.							
Helicopter bucket work – establish contact with the pilot on air to ground. Use "clock" position to guide the helicopter in. Prior to the drop, clear the area.							
Working in Bear Country – remove all food scraps, wrappings, and garbage for the line every day.							
9. Division/Group Communication Summary							
Function	Frequency - RX	Frequency - TX	Tone	Channel	Comments		
COMMAND							
TACTICAL							
AIR TO GROUND							
Prepared by (PSC2) Patrick Seymour		Approved by (PSC2) Will Bernard		Date 09/16/17		Time 2000	

AIR OPERATIONS SUMMARY

Prepared By: Vince Welbaum

Prepared Date/Time: 9/16/2017 1900

1. INCIDENT NAME: CARIBOU/GIBRALTERWEASEL
 2. OPERATIONAL PERIOD DATE: 9/17/2017

START TIME: 600
 END TIME: 2200
 SUNRISE: 0720 Helibase
 SUNSET: 1948 Helibase

5. Airspace Information:
 TFR: Caribou 7/5919
 104, 5 corner polygon,
 11,000 ft.
 Gibraltar 7/2072
 69, 7 corner polygon,
 11,000 ft.

3. REMARKS (Safety Notes, Hazards)
 IMPT: Scoopers not avail (returned to Canada)
 ATGS to manage both Air/Ground Frequencies.
 FREQS: A/G 1 PRIMARY is BRIEFING ATGS → LINE OSC/DIVS;
 A/G 2 SECONDARY is for TACTICS between Pilot → DIVS
 AOBID to brief ATGS between 0800-0830 on tactical air situation
 Winds:
 Crystal Lake Helibase (01MT) @ N 48 47.282 W 114 52.717 - 3115;
 Eureka Airport (88M) @ N 48 58.056 W 115 4.860 - 2660'.
 NO DIP FROM OKADA LAKE (WEST OF CARIBOU)

BORDER OPS: Dispatch will initiate special procedures when we fly fires within 10 miles of the border. Use transponder code and NAVCANADA A2A. U.S. Border Patrol drones will be deconflicted with fire aircraft

4. READY ALERT AIRCRAFT
 Incident Medevac Resources:
 Primary: AS-350 B3 318MG
 Secondary: None
 External Medevac Resources:
 SHORTHAUL Order via A/C Desk.
 Hoists/UVG: Two Bear Air Civilian via
 Flathead Sheriff (406) 758-5610
 Kalispell - Alert Air Ambulance (406) 752-9797. Ensure KNF A/C desk is notified if helicopter dispatched to medevac.

6. PERSONNEL	NAME	PHONE #	7. FREQUENCIES	VHF-AM	VHF-FM
Air Ops Branch Director	Hugh Carson (O-327)	970-778-7078	A/A PRI (TFR) (A-19)	119.3500	
			A/A SEC (A-??)	125.6000	
Air Support Group Supv/HEB1	Scott Robinson (O-6.10)	406-334-4142	A/A NAVCANADA	126.7000	Tx/Rx 167.9000
Air Tactical Group Supv	William Blackburn (O-298)	661-547-4205	A/G 1 - Primary (Briefing)		Tx/Rx 169.3625
Air Tactical Group Supv (IA Kalispell)	Alan Osborn	406-291-1181	A/G 2 - Secondary (Tactics)		163.1000
Helibase Manager 1 (Crystal Lake)	Scott Robinson (O-6.10)	406-334-4142	Deck		172.6500
Helicopter Mgr 18MG	Anthony Waite O-225	208-866-6516	TOLC		
Helicopter Mgr 80NH	Charlie Rudacille (O-187)	540-622-7436	Unicom Crystal Lake	122.7000	
Helicopter Mgr 80NH	Joe Jarrells O-188	540-622-3907	KNF IA A/G EAST		Tx/Rx 168.3875 Tx Tn 114.8
Helicopter Mgr 804PJ	Shawn Olsen O-191	218.242.0171	KNF IA A/G WEST		Tx/Rx 166.9000 Tx Tn 110.9
Helicopter Mgr (T) 804PJ	Clint Smith O-271	406.661.5516	IPNF		Tx/Rx 168.7750 Tx Tn 123.0
Crystal Lake HB Property Owner	Jim Smith	406.882.4114	National Fit Follow		168.6500 Tx/Rx Tn 110.9
British Col Air Ops	Gary Sullivan	807-464-0634	Air Guard		168.625 TX Tn 110.9
US Border Patrol	Brian Phillips	406.291.6329			
Kootenai AC Desk	Liz	406-283-7739			

MEDEVAC COMMO
 On Scene at Medivac site A/G Medical (Tan): 150.3400N Tone 156.7 Tx
 Commo with Hospital A/G (White): 155.2800 Tone 156.7 Tx

Signature: 

8a. Tactical FW A/C

AIR Tankers: Grangeville, Helena, Missoula, Moses Lake,
Redmond
SEATS: Coeur d'Alene, Helena, and Ronan
SCOOPERS: Helena and Kalispell

FAA #	REQ #	TY	MAKE/MODEL	BASE	START	AVAIL	PERSONNEL	REMARKS
285	A-106	1	C-337	Kalispell	900	930	William Blackburn	Last Day 9/19
909AK		1	AC500S	Kalispell	900	930	Alan Osborn	KNF IA

9. HELICOPTERS

FAA N#	REQ #	TY	MAKE/ MODEL	BASE	START	AVAIL	REMARKS	FAA N#
318MG	A-107	3	AS-350-B3	Crystal Lk	830	900	CWN A-107	
80NH	A-48	2	Bell UH1H	Crystal Lk	830	900	CWN A-48	
804PJ	A-108	1	UH60	Crystal Lk	830	900	CWN A-108	

10. MISSIONS

Type	TIME	From	To	REMARKS
PRIORITY: Recon at 1100 with 1 Pax and portable repeater to Robinson Peak. Land and shutdown until radio tech finished. Return to base.	1100	Crystal Helibase		Robinson Peak
Bucket Support CARIBOU PRIORITY IS DIVS M.		Crystal Helibase		
Recon as requested to AOB. Support to Ty 3 Team with IC/OSC approval				

INCIDENT RADIO COMMUNICATIONS PLAN

1. Incident Name
Caribou/Gibraltar

2. Date/ Time Prepared
9/16/2017

3. Operational Period Date/Time
9/17/2017

4. Basic Radio Channel Utilization

Mode: W=Wideband Analog, N=Narrowband Analog, D=Digital, M=Mixed

Channel	Function	Frequency	Tone	Mode	Assignment	Remarks
1	TAC 1	RX: 166.7250	131.8	N	Division Alpha	Caribou
		TX: 166.7250	131.8			
2	TAC 2	RX: 166.7750	131.8	N	Division Mike	Caribou
		TX: 166.7750	131.8			
3	TAC 3	RX: 168.2500	131.8	N	Division Zulu	Caribou
		TX: 168.2500	131.8			
4	TAC 4	RX: 168.6000	131.8	N	Division Tango	Gibraltar
		TX: 168.6000	131.8			
5	TAC 5	RX: 168.2000	131.8	N	Division Golf	Gibraltar
		TX: 168.2000	131.8			
6	TAC 6	RX: 168.0500	131.8	N	Structure Division	Structure Protection
		TX: 168.0500	131.8			
7	TAC 7 (Silver)	RX: 163.8900		N	Silver	Canadian Coordination
		TX: 163.8900				
8	COMMAND 1 Gibraltar	RX: 168.0750	131.8	N	Command 1	Gibraltar Link to ICP on Marston
		TX: 170.4250	131.8			
9	COMMAND 2 Caribou	RX: 171.0375	131.8	N	Repeater inactive after 1100	Use human repeater if necessary to CMD 1
		TX: 163.8250	131.8			
10	COMMAND 3 Caribou	RX: 170.6875	131.8	N	Command 3	Caribou Link to ICP on Black Butte
		TX: 166.5750	131.8			
11	MARSTON RPT	RX: 171.2625		N	Link to Dispatch for IA	Kootenai Dispatch
		TX: 163.3500	114.8			
12	TAN	RX: 155.3400		N	Medical	Lifeflight
		TX: 155.3400	156.7			
13	RED	RX: 154.0700		N	Mutual Aid	IA
		TX: 154.0700				
14	A/G 1	RX: 167.9000		N	Incident Air to Ground	Primary
		TX: 167.9000				
15	A/G 2	RX: 169.3625		N	Incident Air to Ground	Secondary
		TX: 169.3625				
16	AIRGRD	RX: 168.6250		N	Air Guard	
		TX: 168.6250	110.9			

5. Prepared by (Communications Unit)

Jerry Haaland, COMML

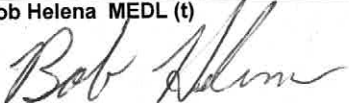
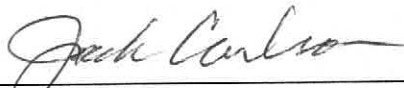
MEDICAL PLAN (ICS 206 WF)

Incident/Project Name		1. Operational Period					
Caribou / Gibraltar Ridge Fire		Date/Time 9/17/2017 0530-2200					
2. Ambulance Services							
Name	Complete Address	Phone & EMS Frequency	Advanced Life Support (ALS) Yes No				
Eureka Ambulance	Eureka, MT	911 or 406-297-2121			X		
Whitefish Ambulance	Whitefish, MT	406-758-5610	X				
3. Air Ambulance Services							
Name	Phone	Type of Aircraft & Capability					
Alert Air Rescue	406-752-9797	Night Vision ALS					
2 Bear Air	406-758-5610	400 LBS Hoist/ Night Vision					
4. Hospitals							
Name Complete Address	GPS Datum – WGS 84 Coordinate Standard Degrees Decimal Minutes DD° MM.MMM' N - Lat DD° MM.MMM' W - Long		Travel Time Air Gnd		Phone	Helipad Yes No	Level of Care Facility
	Lat:	N 48 53.44		15 Min	406-297-3145	X	Primary Care clinic
Long:	W115 03.60						
VHF:							
North Valley Hospital 1600 Hospital Way Whitefish, MT	Lat:	N 48 22.84	20 min	60 min	406-863-3500	X	Level 4 Trauma Center
	Long:	W 114 19.868167					
	VHF:	155.280					
Kalispell Regional Medical Center 310 Sunnyview Ln Kalispell, MT 59901	Lat:	N 48 12.800	30 min	80 min	406-752-5111	X	Level 3 Trauma Center
	Long:	W 114 19.440					
	VHF:	155.280					
5. Division Branch Group		Area Location Capability					
Div A	Point of Contact:						
	EMS Responders & Capability:		Dave Helmrick- EMTF @ Dodge Creek Staging				
	Equipment Available on Scene:		Trauma Kit, Backboard, O2, EPI, IV, albuterol				
	Medical Emergency Channel:		Command 2				
	ETA for Ambulance to Scene:		Caribou Ambulance staged at Jct of 92 and 474 , 25 min to DP2				
	Air:						
	Approved Helispot:						
	Lat:						
Long:							
STRUCTURE	Point of Contact:						
	EMS Responders & Capability:		Susan Kolp - EMPF @ DP27				
	Equipment Available on Scene:		ALS Kit, & Meds, Backboard, O2, AED,				
	Medical Emergency Channel:		Command 2				
	ETA for Ambulance to Scene:		Caribou Ambulance staged at Jct of 92 and 474 , 25 min to DP26				
	Air:						
	Approved Helispot:						
	Lat:						
Long:							

MEDICAL PLAN (ICS 206 WF)

Div M	Point of Contact:				
	EMS Responders & Capability:	Jenifer Frasier - EMTF @ DP2			
	Equipment Available on Scene:	Trauma Kit, SKED, O2			
	Medical Emergency Channel:	Command 2			
	ETA for Ambulance to Scene:	Caribou Ambulance staged at Jct of 92 and 474, 30 min to DP4			
	Air:				
	Approved Helispot:	H151			
	Lat:	N 48 55.180			
	Long:	W 115 21.308			
6. Name & Location		Remote Camp Location(s)			
Div Z	Point of Contact:				
	EMS Responders & Capability:	Soren Koetter - EMPF @ DP75			
	Equipment Available on Scene:	ALS Kit & Meds, SKED, O2			
	Medical Emergency Channel:	Command 2			
	ETA for Ambulance to Scene:	Caribou Ambulance staged at Jct of 92 and 474, 60 min to DP75			
	Air:				
	Ground:				
	Approved Helispot:	H160	H180 (Emergency)		H157
	Lat:	N 48 57.013	N 48 59.377	N 48 55.096	
	Long:	W115 29.993	W 115 27.458	W 115 28.213	
Div G	Point of Contact:				
	EMS Responders & Capability:	Theresa Hafen - IMST			
	Equipment Available on Scene:	Trauma Kit, Backboard, O2, EPI, Albuterol, Nitro, IV, AED			
	Medical Emergency Channel:	Command 1			
	ETA for Ambulance to Scene:	45 min from Eureka to DP-20			
	Air:				
	Ground:				
	Approved Helispot:	H20	H25	H36	H40 H80
	Lat:	48 51.12	48 52.04	48 52.66	48 52.88 48 54.57
Long:	114 58.38	114 54.26	114 54.22	114 54.69 114 51.76	
Div T	Point of Contact:				
	EMS Responders & Capability:	Theresa Hafen - IMST			
	Equipment Available on Scene:	Trauma Kit, Backboard, O2, EPI, IV, Albuterol, Nitro, AED			
	Medical Emergency Channel:	Command 1			
	ETA for Ambulance to Scene:	55 min from Eureka to DP-1			
	Air:				
	Ground:				
	Approved Helispot:	DP1/H1 (Emergency)		DP10/H10	H9
	Lat:	N 48 53.435		N 48 49.430	N 48 49.257
Long:	W 114 47.917		W 114 51.645	W 114 51.200	
ICP&STAGING	Point of Contact:				
	EMS Responders & Capability:	Connie Weeks - MEDL, Bob Helena – MEDL(t) @ Medical Unit			
	Equipment Available on Scene:	Trauma Kit, EPI, AED, Albuterol, Nitro, IV			
	Medical Emergency Channel:	Command 2			
	ETA for Ambulance to Scene:	15 min			
	Air:				
	Ground:				
	Approved Helispot:				
	Lat:				
Long:					

MEDICAL PLAN (ICS 206 WF)

7. Incident Communication Protocol			
<p>Upon occurrence of a "Major Medical" or accident involving significant injury on the fire line, the closest DIVS should respond directly to the scene to take control of the situation and direct necessary actions. If the DIVS is unavailable, the nearest fire line supervisor or leader needs to take charge.</p> <p>1. Clear all radio traffic on the Incident Command Channel--use to coordinate response with the MEDICAL UNIT LEADER via Communications. DO NOT USE NAMES. Identify: a) The on-scene Point Of Contact (i.e. TFLD Smith); b) Describe the nature of the accident.</p> <p>2. Obtain and facilitate nearest EMT to the scene. Identify to Communications medical personnel on site.</p> <p>3. IDENTIFY nature of the problem, # of patients, status, vitals & location. (GPS if possible) Request additional resources if needed.</p> <p>4. Coordinate and facilitate appropriate transportation for injured with Medical Unit EMT in charge of patient(s).</p> <p>5. Remove all unnecessary personnel from the scene.</p> <p>6. Secure scene, identify witnesses for later investigation. Document all information received and transmitted on the radio or phone.</p> <p>7. Inform Communications of <u>any</u> changes in the on scene for Point Of Contact or medical personnel as they occur.</p> <p style="text-align: center;">LIFE SAFETY IS THE NUMBER 1 PRIORITY ON THIS INCIDENT!</p>			
8. Prepared By (Medical Unit Leader)	9. Date/Time	10. Reviewed By (Safety Officer)	11. Date/Time
Bob Helena MEDL (t) 	9/16/2017 1900	Jack Carlson Breck Hudson 	9/16/2017 1900

Incident Emergency Plan (IEP) (Incident within an Incident)

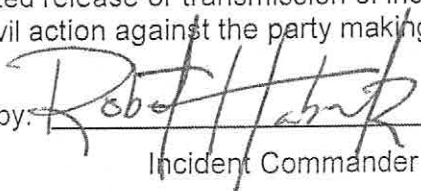
The IMT **Incident Commander (IC)** is responsible for overall action in case of an accident.

- At the scene of a medical emergency, an on-scene **IC** will be determined or designated by chain of command. *The intent is to put the highest qualified/experienced person as the initial IC. Under no circumstances will response actions be delayed waiting for an OSC, Division Supervisor (DIVS), Safety Officer (SOF2), or other overhead to arrive at the scene.* Upon occurrence of an accident requiring evacuation, or a fatality, an **OSC** should go directly to the scene or designate appropriate Operations Section personnel to take control of the situation and direct necessary actions. Until the **OSC** or designee arrives, the **DIVS, SOF2** or appropriate Section Supervisory Overhead person nearest the scene will go to the scene and assume **IC** duties.
- This on-scene **IC** and the person assessing/treating the patient may or may not be the same person. The on-scene **IC is in overall command and control on the medical scene.**
- The on-scene **IC** may delegate communication responsibilities to a Point-of-Contact (**POC**).
- The on-scene **IC** will:
 - Take charge of the scene and identify/determine who is in charge of assessing and treating the patient.
 - Use the 206 Medical Plan/ Nine Line Form (inside back cover of daily IAP, p.108 IRPG) to relay critical information regarding patient assessment, transportation, and resource needs.
 - Coordinate the request for transportation and/or other resources based on patient assessment.
 - Ensure that information about patient assessment, transportation or other resource needs is transmitted directly to the Incident Command Post Communications in order to reduce the time it takes to communicate essential information and to limit the potential for miscommunication.
 - Upon arrival at the accident scene, the person who has been designated as responsible for action will take immediate action to clear the scene of all unnecessary personnel and equipment. Personnel will be re-assigned to suppression duties (if possible) or relieved and sent to camp as necessary. Incident Objectives should be continued or maintained wherever possible.
- All personnel assigned to accident mitigation and support shall be immediately advised as to who is in charge of the accident scene (the initial **IC** and any subsequent **IC** changes).
- A **SOF2** or **SOFR** will respond immediately to the scene to assist the person in charge (initial **IC**) or assume **IC** duties. If any air resources (including non-incident based) will be needed for evac/extraction, notify Air Support (**ASGS**) to coordinate.

The name(s) of the injured **will NOT be used** at any time during any open communications in the accident mitigation process. No information regarding the accident or fatality will be released to the public without first going through the **IMT IC**.

Cameras, cell phones, and other social network devices are forbidden at an emergency accident/injury incident without **IC** authorization. Transmission of pictures or information of an injury/accident will result in immediate release and reprimand notification to the home unit. Unauthorized release or transmission of incident related information and/or photographs could result in civil action against the party making the unauthorized release.

Approved by: _____


Incident Commander

Date: _____

8/30/17

DIVISION-SPECIFIC MEDICAL EMERGENCY ACTION PLAN

Pre-Planning for today's assignment

What are the likely hazards that could cause injuries? What kind of severe injuries?		
Who is the likely in-charge DIVS or overhead for an emergency in your assigned area today? (i.e. "Division Zulu")		
Who are the Medical personnel assigned to your part of the incident? What are their capabilities?		
Other Emergency Responders: fire dept, crash rescue, ambulance?		
Communications: Command channel, Air to Ground, Medical helicopters, local rescue/medical?		
Transportation methods available	Ground vehicle, drop point, coordinates, travel route?	
	Aircraft I.D, helispot names, coordinates? Hoist capable, internal transport	
	Other available methods - contingency	
Most likely workforce for evacuation		

Response checklist

Who takes charge?

- DIVS or designated Overhead manages the overall scene and evacuation process.
- Medical personnel and emergency responders manage patients and conduct rescues.
- OPS and IC make command decisions so the emergency can be given full attention and management. They continue to manage ongoing incident operations.

Response sequence:

- First, secure the scene and protect responders and patients from further injury.
- Clear the Command channel for "Emergency Traffic only" if this is a critical emergency. If not, inform Communications of non-critical-emergency status and use normal communications.
- Contact closest Medical personnel and DIVS or designated Overhead for response.
- Notify Communications to initiate Accident Action Plan response.

Information for Communications:

- Type and extent of injuries?
- Airway or breathing problems? Serious bleeding?
- Is an EMT present or needed? Are Paramedics (Advanced Life Support) needed?
- Specific location of patients (Lat/Long, access route, DP#, helicopter Landing Zone)?
- What type of transport is needed? Helicopter medevac, hoist, ambulance or ground transport?
- Name of contact person in charge of the scene.
- Do not use names of patients at any time.
- Medical Emergency Responders confer with Medical Unit Leader and DIVS or designated Overhead to determine if this is a critical emergency and what type of transport is needed.

Human Resource Message

All I really need to know I learned in Kindergarten

by Robert Fulghum

Wisdom is not at the top of the graduate-school mountain, but it was in the sand pile out on the playground in kindergarten. These are the things Robert Fulghum learned:

1. Share everything.
2. Play fair.
3. Don't hit people.
4. Put things back where you found them.
5. Clean up your own mess.
6. Don't take things that aren't yours.
7. Say you're sorry when you hurt somebody.
8. Wash your hands before you eat.
9. When you go out into the world, watch for traffic, hold hands and stick together.

A few more I would add include:

1. Smile to everyone you see.
2. Listen more than you speak.
3. Be nice to everyone.



**"All those in favor say 'Aye' –
all those opposed say 'Nay'."**

**If you think the cost of training
is expensive, check out the cost
of ignorance!**

**Human Resources Specialist
Karen Hartman
801-368-3493**

Pending Demob

(does not include recent op's demobs.)

09/15/2017

E-134 1200 (LOWB) TEN LAKES FORESTRY - GIBRALTER

09/17/2017

O-178 0700 (RADO)	CARTER, AUBURN	CARIBOU
O-175 0700 (RADO)	HOUSE, TIM	CARIBOU
O-176 0700 (RADO)	JOYCE, SHAWN	CARIBOU
O-177 0700 (RADO)	SAUNDERS, JOSH	CARIBOU
O-67 0800 (SEC2)	HAYS, MICHAEL R	CARIBOU
E-14 0800 (WTT2)	OXFORD	CARIBOU
O-47 0800 (EMTF)	GRAY, JONAH	CARIBOU
O-98 0800 (EQD)	MODULE - FALLER - LEEVER,	CARIBOU
O-115 0800 (PIOF)	RUSSELL, KATHRYN KENT	CARIBOU
O-45 0900 (EMTF)	NELMS, BAMBI LOUANNE	CARIBOU
O-49 1130 (SECM)	HANSON, DARRELL W	CARIBOU
E-192 1200 (SUV)	ENPRSE NISN PATHW602VL VIN:	CARIBOU
O-73 1800 (SOFR)	MILLER, BRUCE M	CARIBOU

09/18/2017

E-31 0800 (POT1) A-ABEL MOVING & RIGGING GIBRALTER

09/19/2017

E-84 0800 (ENG6) ENGINE - T6 - PAGOSA FPD - CARIBOU
E-97 0800 (ENG4) ENGINE - T4 - NATIONAL CARIBOU
O-298 0600 (ATGS) BLACKBURN, WILLIAM R CARIBOU
O-148 0600 (PTRC) DROWN JR, ROBERT CHARLES CARIBOU
O-169 0900 (TFLD) RATCLIFFE, EVAN ANDREW CARIBOU

09/20/2017

TENTATIVE RELEASE
CARIBOU US-MT-KNF-000174
OVERHEAD
O-327 0500 (AOBD) CARSON, HUGH A CARIBOU

IAP Contact List
(Revised 9/16)

Kootenai Expanded Dispatch

FAX: 406-283-7624 email: kdexpanded@gmail.com
Supervisor (OH/Supply) Linda 406-283-7677
Supervisor (EQ/Crew) Tom 406-283-7639
Overhead –West Fork/Moose Shelly 406-283-7661
Equipment Jamie 406-283-7603
Supplies-Caribou Mickey 406-283-7644
Supplies-West Fork Barb 406-283-7604
Overhead- Caribou Kevin 406-283-7772

USFS

Eureka-Fortine District Ranger Byran Donner 406-296-7145
Three Rivers District Ranger Kirsten Kaiser 406-546-4599

Alaska Crews

IARR Doug Mackey 907-460-2652
IARR (t) Calvin Moses 208-809-0082
Crew Admin Rep Cathy Sweet 208-809-0078

Pearson IMT

Incident Commander Shawn Pearson 208-659-9591
IC trainee Bob Habeck 406-431-1359
Planning Section Chief Patrick Seymour 208-651-4047
Human Resources Spec. Karen Hartman 801-368-3493

Incident Command Post

	Landline	FAX
LOGISTICS SECTION	406-297-4033	
Medical	406-297-6181	
Communications	406-297-4271	
Ordering	406-297-5327	406-297-3048
Ground Support	406-297-6961	
Facilities	406-297-6181	
Supply	406-297-8681	
PLANNING SECTION	406-297-6704	
Demob/Resources	406-297-6704	406-297-8786
OPERATIONS	406-297-6433	
INFORMATION	406-272-2082	
FINANCE SECTION	406-297-5123	
SAFETY	406-297-9547	

Reference Number

LINE SPIKE SUPPLY ORDER FORM

Division/Group: _____ Delivery Location: _____

Requested Delivery Date / Time: _____ Delivery Contact: _____

Delivery Method: Ground Air-Internal Air- Belly Hook Other: _____

Weight (lbs.): _____ Long Line Length (ft.): _____

Destination Point: LAT: _____ LONG: _____ Elevation (ft.) _____

Remarks:

NOTE: Items 1-5 via Food Unit, Items 5-20+ via Supply Unit

Line	Camp/Line Spike Item	NFES	QTY	Line	Tactical / Supply Item	NFES	QTY
1	Dinner/person			20	AA Batteries (Case)	0030	
2	Sack Lunch/person			21	Specialty Items:		
3	Cold breakfast/person			22	Saw Chain _____ Driver		
4	Fruit (Box)			23	Chain tooth type _____		
5	Gatorade (Case)			24			
6	Cubitainer Drinking	0048		25			
7	MREs (case)	1842		26			
8	Fiber Tape (Roll)	0222		27			
9	Garbage Bags, 30 Gal. (Each)			28			
10	Garbage Bag, 55 Gal. (Each)			29			
11	Toilet Paper (Roll)			30			
12	Paper Towel (roll)			31			
13	Visqueen (Roll)			32			
14	P-cord (By the Foot/Roll)			33			
15	Washbasin (ea)			34			
16	Unleaded Gas (5 Gallon)	0606		35			
17	2 Cycle Oil (Saw mix for 5 GAL)			36			
18	Bar Oil (GAL)	1869		37			
19	Pink Flagging Tape (Roll)	2401		38			

DIVS should order these supplies by radio through Operations prior to 0900 hours if planning to spike that evening, or drop off the completed form to Supply in the evening or morning for the following night. When ordering please use line numbers not item description and list any specialty items at the end of the order. **Reminder: 2+ crews consider ordering Spike Camp MGR** REV 031616

Reference Number

PUMP / HOSELAY ORDER FORM

Date: _____ Division/Group: _____ Delivery Location: _____

Requested Delivery Date / Time: _____ Delivery Contact: _____

Delivery Method: Ground Air-Internal Air- Belly Hook Other: _____

Weight (lbs.): _____ Long Line Length (ft.): _____

Destination Point: LAT: _____ LONG: _____ Elevation (ft.Ft) _____

Pump location: LAT: _____ LONG: _____ Serial #: _____ NRK# _____

Pump location: LAT: _____ LONG: _____ Serial #: _____ NRK# _____

Division Pump Order

Notes/Remarks/Delivered to:

Line	Item	NFES#	QTY
1	Lightweight pump (Pressure Pump)	0670	
2	Pump, Mark III (Kit)	0870	
3	Volume Pump (Kit)		
4	Fuel can, 5 GAL Gas Can w/ gasoline and fill spout	0606	
5	2 Cycle Oil (QT) (for Mk III only)	0341	

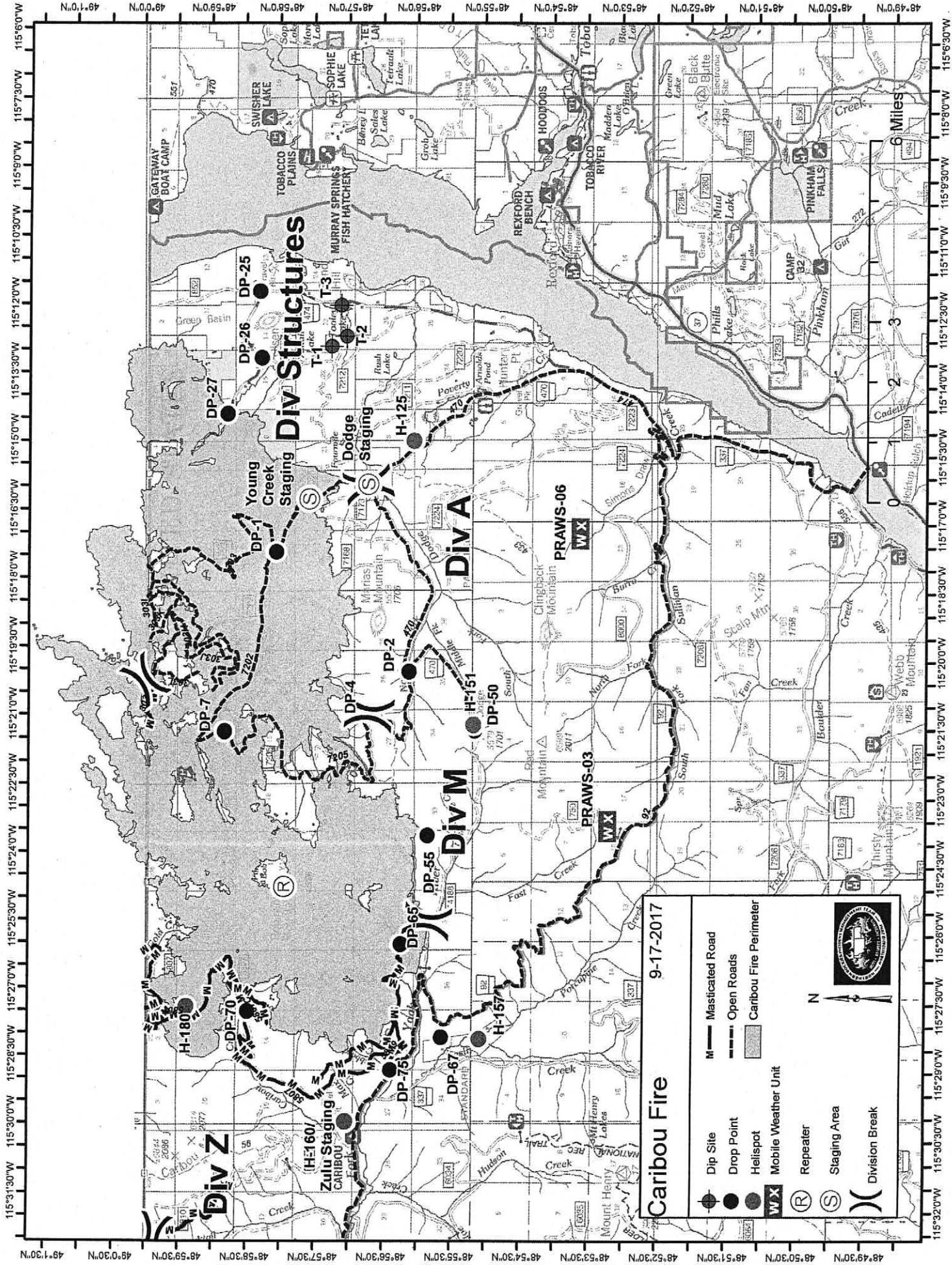
Division Hoselay Order

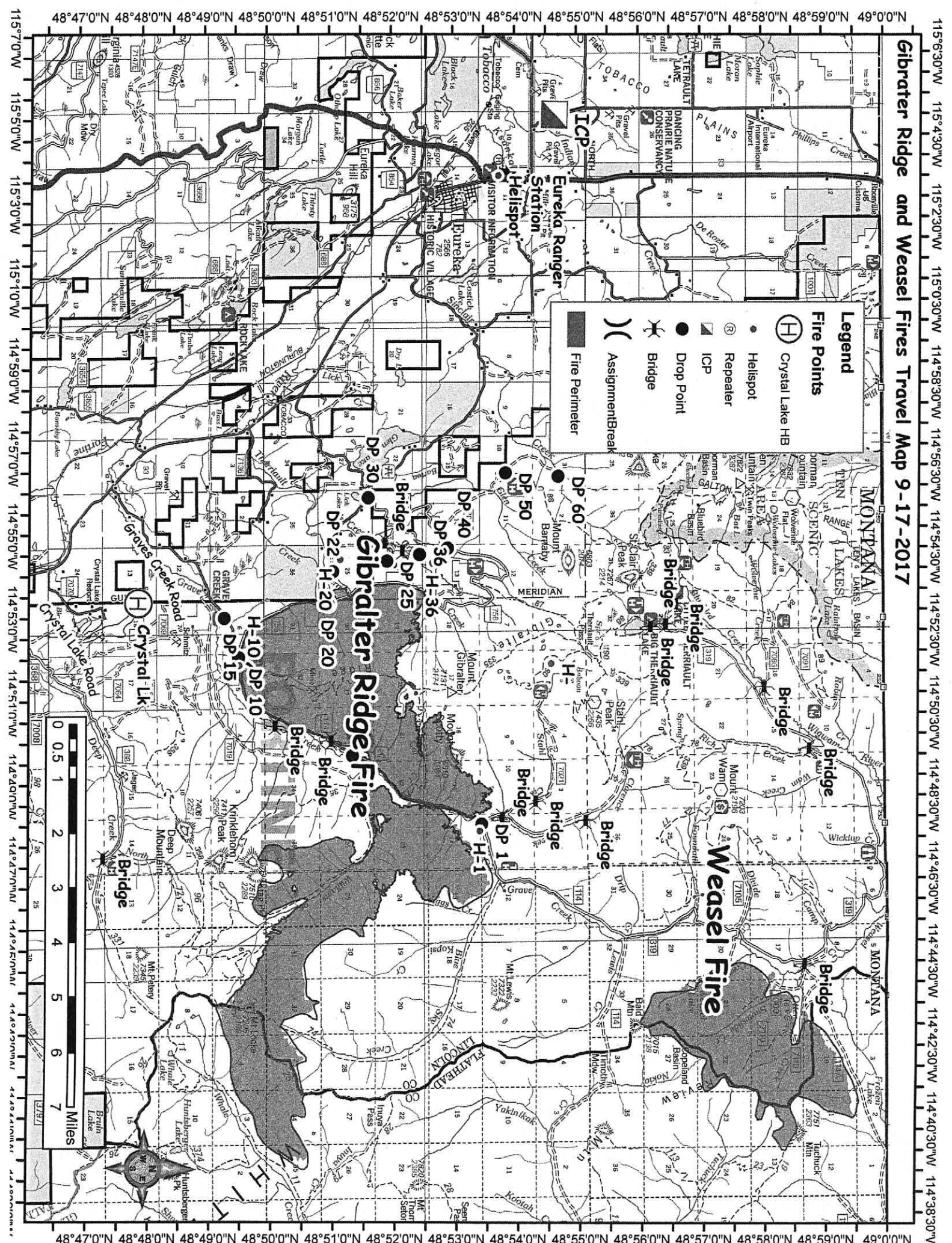
Notes/Remarks/Delivered to:

Line	Item	NFES#	QTY
6	Progressive Hoselay kit (See note below)		
7	Hose, 1 1/2" 100' Length	1239	
8	Valve, 1 1/2" Gated Wye	0231	
9	Reducer, 1 1/2" - 1"	0010	
10	Hose, 1" 100' Length	1238	
11	Valve, 1" Gated Wye	2059	
12	Nozzle, 1"	0138	
13	Nozzle, 1" forester	0024	
14	Reducer, 1" - 3/4"	0733	
15	Hose, 3/4" Garden 50' Length	1016	
16	Valve, 3/4" Gated Wye	0272	
17	Nozzle, 3/4" Garden Hose	0136	
18	Shutoff Valve, 3/4"	0738	
19	Blivet, 55 Gallon	0437	
20	Blivet Kit		
21	Backpack pump	1149	
22	Fold-A-tank, Specify capacity (GAL)		
23	Pumpkin, Specify capacity (GAL)		
24			
25			

Progressive Hoselay kit contains: 2500' of 1 1/2" hose, (12) 1 1/2" Gated wyes, (12) 1 1/2" - 1" reducers, 1200' of 1" hose, (12) 1" Forester Nozzles, (12) lengths of 3/4" hose, (12) 3/4" nozzles, (12) 1" to 3/4" reducers, (12) 3/4" wyes, (12) 3/4" shutoff valves

DIVS should place pump and hoselay orders from the fireline by contacting Communications via radio, or turn in this completed form to Supply in the evening when they come into ICP. REV 031616





Gibraltar Ridge and Weasel Fires Travel Map 9-17-2017

Legend

- Fire Points
 - Crystal Lake HB
 - Helispot
 - Repeater
 - ICP
 - Drop Point
 - Bridge
 - Assignment/Break
 - Fire Perimeter

15°30'W 15°43'W 15°50'W 15°59'W 16°00'W 16°01'W 16°02'W 16°03'W 16°04'W 16°05'W 16°06'W 16°07'W 16°08'W 16°09'W 16°10'W 16°11'W 16°12'W 16°13'W 16°14'W 16°15'W 16°16'W 16°17'W 16°18'W 16°19'W 16°20'W 16°21'W 16°22'W 16°23'W 16°24'W 16°25'W 16°26'W 16°27'W 16°28'W 16°29'W 16°30'W

115°30'W 115°43'W 115°50'W 115°59'W 116°00'W 116°01'W 116°02'W 116°03'W 116°04'W 116°05'W 116°06'W 116°07'W 116°08'W 116°09'W 116°10'W 116°11'W 116°12'W 116°13'W 116°14'W 116°15'W 116°16'W 116°17'W 116°18'W 116°19'W 116°20'W 116°21'W 116°22'W 116°23'W 116°24'W 116°25'W 116°26'W 116°27'W 116°28'W 116°29'W 116°30'W

48°47'0"N 48°48'0"N 48°49'0"N 48°50'0"N 48°51'0"N 48°52'0"N 48°53'0"N 48°54'0"N 48°55'0"N 48°56'0"N 48°57'0"N 48°58'0"N 48°59'0"N 49°0'0"N

48°47'0"N 48°48'0"N 48°49'0"N 48°50'0"N 48°51'0"N 48°52'0"N 48°53'0"N 48°54'0"N 48°55'0"N 48°56'0"N 48°57'0"N 48°58'0"N 48°59'0"N 49°0'0"N



MEDICAL PLAN (ICS 206 WF)

Medical Incident Report

FOR ALL MEDICAL EMERGENCIES: IDENTIFY ON SCENE INCIDENT COMMANDER BY NAME AND POSITION AND ANNOUNCE "MEDICAL EMERGENCY" TO INITIATE RESPONSE FROM IMT COMMUNICATIONS/DISPATCH.

Use items one through nine to communicate situation to communications/dispatch.

1. CONTACT COMMUNICATIONS/DISPATCH

Ex: "Communications, Div. Alpha. Stand-by for Priority Medical Incident Report." (If life threatening request designated frequency be cleared for emergency traffic.)

2. INCIDENT STATUS: Provide incident summary and command structure.

Nature of Injury/Illness		<i>Describe the injury (Ex: Broken leg with bleeding)</i>
Incident Name		<i>Geographic Name + "Medical" (Ex: Trout Meadow Medical)</i>
Incident Commander		<i>Name of IC</i>
Patient Care		<i>Name of Care Provider (Ex: EMT Smith)</i>

3. INITIAL PATIENT ASSESSMENT: Complete this section for each patient. This is only a brief, initial assessment. Provide additional patient info after completing this 9 Line Report.

Number of Patients:	Male / Female	Age:	Weight:
Conscious? <input type="checkbox"/> YES	<input type="checkbox"/> NO = MEDEVAC!		
Breathing? <input type="checkbox"/> YES	<input type="checkbox"/> NO = MEDEVAC!		
Mechanism of Injury: <i>What caused the injury?</i>			
Lat/Long (Datum WGS84) <i>Ex: N 40° 42.45' x W 123° 03.24'</i>			

4. SEVERITY OF EMERGENCY, TRANSPORT PRIORITY

SEVERITY	TRANSPORT PRIORITY
<input type="checkbox"/> URGENT-RED Life threatening injury or illness. <i>Ex: Unconscious, difficulty breathing, bleeding severely, 2° – 3° burns more than 4 palm sizes, heat stroke, disoriented.</i>	Ambulance or MEDEVAC helicopter. Evacuation need is IMMEDIATE.
<input type="checkbox"/> PRIORITY-YELLOW Serious Injury or illness. <i>Ex: Significant trauma, not able to walk, 2° – 3° burns not more than 1-2 palm sizes.</i>	Ambulance or consider air transport if at remote location. Evacuation may be DELAYED.
<input type="checkbox"/> ROUTINE-GREEN Not a life threatening injury or illness. <i>Ex: Sprains, strains, minor heat-related illness.</i>	Non-Emergency. Evacuation considered Routine of Convenience.

5. TRANSPORT PLAN:

Air Transport: (Agency Aircraft Preferred)

<input type="checkbox"/> Helispot	<input type="checkbox"/> Short-haul/Hoist	<input type="checkbox"/> Life Flight	<input type="checkbox"/> Other
-----------------------------------	---	--------------------------------------	--------------------------------

Ground Transport:

<input type="checkbox"/> Self-Extract	<input type="checkbox"/> Carry-Out	<input type="checkbox"/> Ambulance	<input type="checkbox"/> Other
---------------------------------------	------------------------------------	------------------------------------	--------------------------------

6. ADDITIONAL RESOURCE/EQUIPMENT NEEDS:

<input type="checkbox"/> Paramedic/EMT(s)	<input type="checkbox"/> Crew(s)	<input type="checkbox"/> SKED/Backboard/C-Collar
<input type="checkbox"/> Burn Sheet(s)	<input type="checkbox"/> Oxygen	<input type="checkbox"/> Trauma Bag
<input type="checkbox"/> Medication(s)	<input type="checkbox"/> IV/Fluid(s)	<input type="checkbox"/> Cardiac Monitor/AED
<input type="checkbox"/> Other (i.e. splints, rope rescue, wheeled litter)		

7. COMMUNICATIONS:

Function	Channel Name/Number	Receive (Rx)	Tone/NAC *	Transmit (Tx)	Tone/NAC *
<i>Ex: Command</i>	<i>Forest Rpt, Ch. 2</i>	<i>168.3250</i>	<i>110.9</i>	<i>171.4325</i>	<i>110.9</i>
COMMAND					
AIR-TO-GRND					
TACTICAL					

*(NAC for digital radio system)

8. EVACUATION LOCATION:

Lat/Long (Datum WGS84) <i>EX: N 40 42.45' x W 123 03.24'</i>	
Patient's ETA to Evacuation Location:	
Helispot/Extraction Size and Hazards:	

9. CONTINGENCY:

Considerations: If primary options fall, what actions can be implemented in conjunction with primary evacuation method? Be thinking ahead...

REMEMBER: Confirm ETA's of resources ordered
Act according to your level of training
Be Alert. Keep Calm. Think Clearly. Act Decisively.