

Hanover Fire P1K8R4 (0117) ID-NCF-000521

Nez Perce - Clearwater National Forest

Incident Commander - Kevin Barger

Operational Period:

Wednesday, August 30, 2017- Sunday, Sept. 03, 2017

0600 - 2000



CCC firefighters digging a fire trench around the forest fire, Long Cane District, Sumter NF, South Carolina; photo by Bluford W. Muir, September 1938

Hanover Fire Maps



Hanover Fire on Inciweb



INCIDENT OBJECTIVES (ICS 202)

1. Incident Name:		2. Operational Period: DAY	
HANOVER		Date/Time From: 08/30/2017 0600 WED	Date/Time To: 09/03/2017 2000 SUN
3. Objective(s): <ul style="list-style-type: none"> • To execute full suppression fire management strategies using point and/or zone protection tactics to minimize impacts to values at risk and firefighter exposure, as well as limiting negative fire impacts outside the Gospel Hump Wilderness and within the Wind River drainage system. • To provide structure protection of values within the planning area. • To provide for firefighter safety by following risk management protocols. Firefighter and public safety is the priority in all fire management activities. • To provide for public safety by monitoring fire behavior and following established notifications and evacuation procedures. • To provide initial attack support on the Nez Perce-Clearwater National Forests administered lands within the TFR. • To provide action on Hanover spot fires that may occur on the Payette National Forest. • To provide timely and accurate information to ensure positive relationships with the public, media and cooperators. 			
4. Operational Period Command Emphasis: Fire behavior will begin to increase over the next operational period. Expect to see increased activity that may not have been observed previously during your tour.			
General Situational Awareness: Know where you're at. Know who you are working for and understand your medical protocol.			
5. Site Safety Plan Required? Yes <input type="checkbox"/> No <input checked="" type="checkbox"/>			
Approved Site Safety Plan(s) Located at:			
6. Incident Action Plan (the items checked below are included in this Incident Action Plan):			
<input checked="" type="checkbox"/> ICS 202	<input type="checkbox"/> ICS 207	Other Attachments: <input type="checkbox"/> _____ <input type="checkbox"/> _____ <input type="checkbox"/> _____ <input type="checkbox"/> _____	
<input checked="" type="checkbox"/> ICS 203	<input type="checkbox"/> ICS 208		
<input checked="" type="checkbox"/> ICS 204	<input checked="" type="checkbox"/> ICS 220		
<input checked="" type="checkbox"/> ICS 205	<input checked="" type="checkbox"/> Map/Chart		
<input type="checkbox"/> ICS 205A	<input checked="" type="checkbox"/> Weather Forecast/Tides/Currents		
<input checked="" type="checkbox"/> ICS 206			
7. Prepared by:		Position/Title:	Signature:
8. Approved by Incident Commander:		Name: <i>KEVIN J. Burger</i>	Signature: <i>Kevin J. Burger</i>
ICS 202	IAP Page		Date/Time:

ORGANIZATION ASSIGNMENT LIST (ICS 203)

1. Incident Name:		2. Operational Period: DAY	
HANOVER		Date/Time From: 08/30/2017 0600 WED	Date/Time To: 09/03/2017 2000 SUN
3. Incident Commander(s) and Command Staff:			
IC/UC	KEVIN BARGER		
SAFETY OFFICER	ROB MARTIN		
4. Agency/Organization Representative(s):			
Agency/Organization	Name		
USFS AGENCY ADMIN	JEFF SHINN		
USFS READ	JEREMY HARRIS ALEXANDRA ROZIN (T)		
USFS ARC	STEVE ARMSTRONG		
USFS THSP	KEVIN HAKE		
5. Planning Section:			
CHIEF	MARK DECARIA		
GIS SPECIALIST	JOANNE BONN(T)		
6. Logistics Section:			
BASE CAMP MANAGER	BRETT MIERENDORF		
7. Operations Section:			
OPS SECTION CHIEF	MIKE BLINN		
DIVISION/GROUP	SOUTH GROUP A/D/Z	GRAYDON GALLOWAY	
DIVISION/GROUP	NORTH GROUP G/J/M	JOHN MOORE	
DIVISION/GROUP	P/Y	UNSTAFFED	
8. Finance/Administration Section:			
CHIEF	HEATHER GOOD TUESDAY KIMBALL (T)		
9. Prepared By:	Name:	Position/Title:	Signature:
ICS 203	IAP Page	Date/Time:	



Fire Weather Forecast



FORECAST NO: 24 - Final
PREDICTION FOR: Day/Night Shift
SHIFT DATE: Wednesday Aug 30, 2017
TIME AND DATE ISSUED: Aug 29, 2017 1800hrs

INCIDENT: Hanover Fire
UNIT: Nez-Perce Clearwater NF
SIGNED: Phil Manuel *PM*
Incident Meteorologist (IMET)



RAWS QR Code

Discussion:

*****RED FLAG WARNING TODAY (Noon Until Sunset)***
*** For Scattered Thunderstorms with Gusty Outflow Winds*****

High pressure which brought the hot/dry conditions yesterday will break down today as an upper level disturbance moves across the area late in the day. This disturbance will result in widely scattered thunderstorms across the area this afternoon and evening. In addition to the lightning threat, expect strong gusty outflow winds. After today (Wednesday), winds will become more northerly for a couple of days resulting in somewhat cooler temperatures. The heat will return for the weekend with temperatures climbing back above normal.

WEATHER FORECAST for Today (Wednesday): RED FLAG WARNING - NOON UNTIL SUNSET

SKY/WEATHER: Partly cloudy. Scattered morning showers, then widely scattered afternoon and evening thunderstorms. Storms may contain strong outflow winds.

Max Temperature: 79 to 83 higher elevations and 90 to 95 lower valleys. (down 6)

RH: 22 to 30 percent higher elevations and 16 to 23 percent lower valleys. (up 5)

WINDS: - Eye Level

Valleys: Calm in the morning, then upslope/upvalley 5 to 10 mph in the afternoon.

Ridges: Southwest 6 to 12 mph. Gusts of 25 to 40 mph vicinity of thunderstorms.

HAINES INDEX: 5 (Moderate)

Inversion Breaking: Around noon. **LAL:** 3 **Chance of wetting rain:** 20%

Tonight:

SKY/WEATHER: Mostly cloudy with an evening thunderstorm threat, then clearing. **LAL:** 2

Min Temperature: 50 to 55 highest elevations...55 to 60 valleys.

RH: 60 to 65 percent mid-slopes, ridges. 80% lower valleys.

WINDS: -Eye Level-

Valleys: Downslope 5 to 10 mph in then evening...diminishing to less than 5 mph by midnight.

Ridges: Northeast 10 to 15 mph in the evening, then less than 5 mph after midnight.

EXTENDED FORECAST:

Thursday...Mostly Sunny. Highs 73 to 78 higher elevations and 83 to 87 lower valleys. Min RH 24 to 32% higher elevations and 18 to 25% lower valleys. Ridge Winds W 5 to 15 mph. Haines: 3 (Very Low).

Friday...Sunny. Highs 75 to 80 higher elevations and 85 to 90 lower valleys. Min RH 20 to 25% higher elevations and 15 to 20% lower valleys. Ridge Winds NW 10 to 15 mph. Haines: 4 (Low).

Saturday...Sunny. Above normal temperatures return. Highs 80 to 85 higher elevations and 92 to 97 lower valleys. Min RH 16 to 20% higher elevations and 10 to 15% lower valleys. Ridge Winds SW 5 to 10 mph. Haines: 4 (Low).

Sunday...Sunny. Hot & Dry. Highs 80 to 90 higher elevations and 95 to 102 lower valleys. Min RH 15 to 20% higher elevations and 10 to 15% lower valleys. Ridge Winds SW 5 to 10 mph. Haines 5 (Moderate)

**For future forecast information (or if this forecast becomes unrepresentative), please contact...
National Weather Service in Missoula, MT (406) 329 - 4716.**


Zone Forecasts are also provided daily. The Hanover Fire is located in ID Fire Zone 103

For Spot Forecast Request: <http://www.weather.gov/spot/request>

Fire Weather

- Website Spot Request: <http://www.weather.gov/spot/request/>
- The Fire is Located in ID Fire Zone 103, Weblink:
<http://www.wrh.noaa.gov/firewx/?latitude=&longitude=&wfo=mso&interface=fwzones&click.x=129&click.y=434>
- The National Weather Service in Missoula, MT, provides Decision Weather Support and may be called 24/7 at the following number: (406)-329-4716
- RAWS, SLATE CREEK (SCFI1) for hourly weather obs.
 - Latitude 45.633333
 - Longitude -116.283333
 - Elevation 1568 ft.
- RAWS, MARIAH (TR243) for hourly weather obs.
 - Latitude 45.536667
 - Longitude -115.310556
 - Elevation 3410 ft.
- SNOTEL, SECESH SUMMIT (SCSI1) for hourly weather obs.
 - Latitude 45.18850
 - Longitude -115.97305
 - Elevation 6520 ft.

EXTENDED FIRE BEHAVIOR FORECAST

FORECAST NUMBER: 27	TYPE OF FIRE: Wildland Fire
FIRE NAME: Hanover	OPERATIONAL PERIOD: August 30 – September 03
DATE ISSUED: August 29, 2017	TIME ISSUED: 1800
UNIT: Salmon River RD, Nez Perce Clearwater National Forest	SIGNED:  Typed/printed: Byron R. Kimball

INPUTS

WEATHER SUMMARY: Widely Scattered Thunderstorms early in the period. Partly Cloudy skies becoming sunny and clear, Warm and dry through the period. High temps 80s to mid-90s, RH falling to mid-teens to low 20's during the day. General winds remain light to moderate from the North early on, moving to the Southwest latter. Haines index variable for the period, from 3 to 5.

Please refer to Incident Weather Forecast for specific information.

OUTPUTS

FIRE BEHAVIOR:

Heat remains deeply seated in the heavy fuels of the fire area. Live fuel moisture in the woody underbrush will impede fire spread. Live fuel moisture will decline as weather stays warm and dry leading to potential for increased activity. Don't see enough drying to lead to active spread without energy input from strong wind.

Short Range – Aug 30 – Aug 31:

Activity continues within the existing footprint as heavy fuels retain heat and continue to burn out. Dead fuel is dry and will continue to smolder and consume. Decreased activity for the period as moisture associated with the thunderstorms raises the relative humidity and increases fuel moisture.

High Country: Torching and crowning are to be expected as heavy concentrations of fuel consume and provide heat to overcome moisture. Gusty downdraft winds can also supply the energy for short runs and increased activity.

Sheep Creek: Continued spread in the fine fuels. Spread may take longer to get going with elevated RH from storms. Late afternoon winds may cause issues

Medium Range – Sept 01- Sept 03:

Activity increases as moisture dries with the return of high pressure. Fuel moisture drops and more fuel becomes available. Live fuels will continue to provide suppressing effect but this will diminish as hot, dry weather continues. Expect activity in previously quiet areas as residual heat is assisted by weather to build and resume consuming fuel.

High Country: Short runs with torching and possible crowning to be expected across north end, east from Marten's Hill area as fire moves through concentrations of heavy fuel. Activity across east side will increase with improving burning conditions, with fire backing into Wind River drainage.

River Corridor: Fine fuels continue to carry. Improved burning conditions may allow grass to carry into timber or brush patches. Alignment may result in uphill runs back to the west.

AIR OPERATIONS:

Continuing thunderstorms could limit air operations in the afternoon hours.

SAFETY

Conditions are changing as live fuels dry out. Expect fires to be more active. Snags are still falling and fire compromised trees are still out there. Heads up!!!!

Division/Group Assignment List (ICS 204 WF)

1. Incident Name:		3.				
HANOVER		Branch:		Division/Group:		
2. Operational Period: DAY		NORTH GROUP G/J/M				
Date/Time From: 08/30/2017 0600 WED	Date/Time To: 09/03/2017 2000 SUN					
4. Operations Personnel						
OPERATIONS CHIEF MIKE BLINN		DIVISION/GROUP SUPERVISOR JOHN MOORE				
5. Resources Assigned this Period						
Strike Team / Task Force / Resource Designator	LWD	Leader	Number Persons	Drop Off PT./Time	Pick Up PT./Time	
T21A - GILA REGULAR 3 C-26	09/02	JOE TORRES	19	DP4/0600	DP4/2000	
T21A- FL ST #2 C-29	09/04	JASON FRANKLIN FOSHEE	20	DP4/0600	DP4/2000	
ENG6 HELENA - E671 E-82	09/02	JACOB HOPPE	3	DP4/0600	DP4/2000	
WTS2 SEAN ANDREWS E-91	09/02	CASE SMITH	1	DP4/0600	DP4/2000	
NCF FOREST GRADER (ELK CITY AREA) E-181	09/03	NICK MILLER	1	DP4/0600	DP4/2000	
SERVICE TRUCK FOR GRADER E-184	09/03	NICK MILLER	1	DP4/0600	DP4/2000	
ROCK RAKE E-182	09/03	KEVIN TEATS O-222	1	DP4/0600	DP4/2000	
BACKHOE, NCF, CASE 590 E-199	09/03	KEVIN TEATS O-222	1	DP4/0600	DP4/2000	
EXCAVATOR - L. J. ALLEN E-197	09/06	LARRY ALLEN	1	DP4/0600	DP4/2000	
SOFR	09/05	ROB MARTIN	1	DP4/0600	DP4/2000	
EMPF	09/04	NIKOLAS LUND O-223	1	DP4/0600	DP4/2000	
6. Control Operations/Work Assignments:						
<p>Task: Improve and maintain mechanical fireline constructed within division M and prep trail 88.</p> <p>Purpose: To keep fire south of road 444 and east of 221 road and use fireline as control line for possible firing operations.</p> <p>End State: Keep fire in the wilderness and protect values at risk.</p>						
7. Special Instructions:						
<ul style="list-style-type: none"> - Coordinate with local READs. - Document motorized equipment and mechanical transport wilderness incursions on form in IAP daily and turn in to Division Supervisor. - Fireline along FS Rd 444, north of the wilderness boundary, can be no more than 100 ft from the edge of the south side of the road. Log bays on North side of road will be up to 150 ft for log storage. Fireline will extend 1/3 mile past junction of FS Rd. 444 and 444a, utilizing and tying into natural barriers (meadows, rocks) as final anchor points. When constructing fireline, retain larch and ponderosa pine trees where possible. - No tracked foot prints allowed within 50' of bogs and swamps and 100' of live water. - Initial attack resources will be provided by closest Division. - Haul any unused equipment to ICP. Locate and record all pump serial numbers and locations. 						
8. Division/Group Communication Summary						
Function	Channel	RX Frequency N/W	RX Tone/NAC	TX Frequency N/W	TX Tone/NAC	Mode
AIR TO GROUND	1	166.6750	0.0	166.6750	0.0	A
AIR TO GROUND	2	167.9500	0.0	167.9500	0.0	A
COMMAND	4	170.5625	0.0	164.1375	107.2	A
TACTICAL	16	166.5625	0.0	166.5625	0.0	A
9. Prepared By (Resource Unit Leader)		Approved By (Planning Section Chief)			Date	Time

Division/Group Assignment List (ICS 204 WF)

1. Incident Name:				3.				
HANOVER				Branch:		Division/Group:		
2. Operational Period:						NORTH GROUP G/J/M		
DAY								
Date/Time From: 08/30/2017 0600		WED		Date/Time To: 09/03/2017 2000		SUN		
4. Operations Personnel								
OPERATIONS CHIEF		MIKE BLINN			DIVISION/GROUP SUPERVISOR		JOHN MOORE	
7. Special Instructions:								
8. Division/Group Communication Summary								
Function	Channel	RX Frequency N/W	RX Tone/NAC	TX Frequency N/W	TX Tone/NAC	Mode		
AIR TO GROUND	1	166.6750	0.0	166.6750	0.0	A		
AIR TO GROUND	2	167.9500	0.0	167.9500	0.0	A		
COMMAND	4	170.5625	0.0	164.1375	107.2	A		
TACTICAL	16	166.5625	0.0	166.5625	0.0	A		
9. Prepared By (Resource Unit Leader)			Approved By (Planning Section Chief)			Date	Time	

Division/Group Assignment List (ICS 204 WF)

1. Incident Name:				3.			
HANOVER				Branch:		Division/Group: P/Y	
2. Operational Period: DAY							
Date/Time From: 08/30/2017 0600		WED		Date/Time To: 09/03/2017 2000		SUN	
4. Operations Personnel							
OPERATIONS CHIEF		MIKE BLINN			DIVISION/GROUP SUPERVISOR		UNSTAFFED
5. Resources Assigned this Period							
Strike Team / Task Force / Resource Designator		LWD	Leader	Number Persons	Drop Off PT./Time	Pick Up PT./Time	
UNSTAFFED							
6. Control Operations/Work Assignments:							
Task: Scout division							
Purpose: Monitor fire spread, Identify tactics and strategies.							
End State: Protect structures, keep fire north of the Salmon River.							
7. Special Instructions:							
<ul style="list-style-type: none"> Coordinate river crossing with jet boat. Document motorized equipment and mechanical transport wilderness incursions on form in IAP daily and turn in to Division Supervisor. Work with the local READ Initial attack resources will be provided by closest Division. 							
8. Division/Group Communication Summary							
Function	Channel	RX Frequency N/W	RX Tone/NAC	TX Frequency N/W	TX Tone/NAC	Mode	
AIR TO GROUND	1	166.6750	0.0	166.6750	0.0	A	
AIR TO GROUND	2	167.9500	0.0	167.9500	0.0	A	
COMMAND	4	170.5625	0.0	164.1375	107.2	A	
TACTICAL	16	166.5625	0.0	166.5625	0.0	A	
9. Prepared By (Resource Unit Leader)			Approved By (Planning Section Chief)			Date	Time

Division/Group Assignment List (ICS 204 WF)

1. Incident Name:				3.			
HANOVER				Branch:		Division/Group:	
2. Operational Period: DAY						SOUTH GROUP A/D/Z	
Date/Time From: 08/30/2017 0600 WED		Date/Time To: 09/03/2017 2000 SUN					
4. Operations Personnel							
OPERATIONS CHIEF		MIKE BLINN		DIVISION/GROUP SUPERVISOR		GRAYDON GALLOWAY	
5. Resources Assigned this Period							
Strike Team / Task Force / Resource Designator		LWD	Leader	Number Persons	Drop Off PT./Time	Pick Up PT./Time	
ENG6 WINDSWEPT WILDFIRE E-177		09/07	CHRIS SCHIEFELBEIN	3	DP4/0600	DP4/2000	
ENG6 ROCKY MOUNTIAN FIRE E-175		09/07	DENNIS CROSS	3	SLATE CRK RANGER STN/0600	SLATE CRK RANGER STN/2000	
WTS2 FORESTRY INDUSTRIES E-90		09/04	GREG POFFENBERGER	1	DP4/0600	DP4/2000	
JET BOAT E-148		09/06	HOMER BROWN	1	SLATE CRK RANGER STN/0600	SLATE CRK RANGER STN/2000	
SOFR		09/12	ROB MARTIN	1	DP4/0600	DP4/2000	
EMPF		09/04	NIKOLAS LUND O-223	1	DP4/0600	DP4/2000	
6. Control Operations/Work Assignments:							
<p>Task: Monitor fire spread toward 394 road. Continue to work on fireline along the 221 road.</p> <p>Purpose: To prepare lines for firing operations to keep fire from spreading to the west and protect values at risk. Based on current and expected fire behavior, identify trigger points to take action.</p> <p>End State: To keep fire east of 221 and 394 roads. Protect structures in Florence.</p>							
7. Special Instructions:							
<ul style="list-style-type: none"> • Coordinate with local READs. Work with local READ on specifications in Rocky Bluff Campground. • Document motorized equipment and mechanical transport wilderness incursions on form in IAP daily and turn in to Division Supervisor. • Fireline can be cut no more than 100 ft from centerline of roadway on either side of the road in DIV J. No tracked foot print within 50 ft of bogs and swamps and 100 ft of live water. • Haul any unused equipment and pumps from Florence to ICP. • Locate and record all pump serial numbers and locations. • Initiate actions for value at risk 35. • coordinate river crossing with Jet Boat. 							
8. Division/Group Communication Summary							
Function	Channel	RX Frequency N/W	RX Tone/NAC	TX Frequency N/W	TX Tone/NAC	Mode	
AIR TO GROUND	1	166.6750	0.0	166.6750	0.0	A	
AIR TO GROUND	2	167.9500	0.0	167.9500	0.0	A	
COMMAND	4	170.5625	0.0	164.1375	107.2	A	
TACTICAL	15	169.1250	0.0	169.1250	0.0	A	
9. Prepared By (Resource Unit Leader)			Approved By (Planning Section Chief)			Date	Time

AIR OPERATIONS SUMMARY

Prepared Date: 8/29/2017

Prepared Time: 1240

1. INCIDENT NAME Hanover	2. OPS PERIOD DATE: August 30 - September 3, 2017	START TIME: 0700	END TIME: 2000	SUNRISE: 8/30 06:05 8/31 06:06 9/01 06:08 9/02 06:09 9/03 06:10	SUNSET: 19:28 19:26 19:24 19:22 19:21
-----------------------------	------------------------------------------------------	---------------------	-------------------	--------------------------------------------------------------------------------	------------------------------------------------------

3. REMARKS (Safety Notes, Hazards, Air Operations Special Equipment, etc.): POWERLINES along River, heavy recreational traffic. Dead spots in communications. Flight Follow local with Air Attack. If no Air Attack Flight Follow with Seed Orchid Helibase if unable, then flight follow w/ Grangeville Dispatch on High Camp. Additional Helicopter and Air Attack support from Grangeville Disptach. Smoke Conditions Limiting Visibility. Because of this there is limited to no air attack coverage. Make sure assignment well understood and ground contact assigned. Do not push the limits, especially towards evening. \$\$\$\$\$\$ COSTS: Send Costs to: slatecreekhb@gmail.com Hanover Operations/Air Operations: Seed Orchid Helibase 208-628-3130/3470. - Lat/Long 45° 34.531 x 116° 18.044 Grangeville Dispatch 208-983-6803/6804	4. READY ALERT AIRCRAFT: Request through Grangeville Dispatch Incident Aircraft 9AC can configure for litter. Other There is a short haul capable helicopter in McCall. N353SH. Order through Grangeville Dispatch. Non Agency: Lifeflight St Josephs Regional Trauma 3 In Lewiston, Idaho. Helipad: 9000 Lbs. 46 25.016 117 01.449	5. TFR: 7/5890 Polygon: **JA Standby, be ready** From Surface up to and including 11000 feet 26 NM SE Grangeville, Idaho
---------------------------------------------------------------------------------------------------------------------------------------------------------------------------------------------------------------------------------------------------------------------------------------------------------------------------------------------------------------------------------------------------------------------------------------------------------------------------------------------------------------------------------------------------------------------------------------------------------------------------------------------------------------------------------------------------------------------------------------------------------------------------------------------------------------------------------------------------------------------------------------------------------------------------------------------------------------------------------------------------------	----------------------------------------------------------------------------------------------------------------------------------------------------------------------------------------------------------------------------------------------------------------------------------------------------------------------------------------------------------------------------------------	----------------------------------------------------------------------------------------------------------------------------------------------------------------------------------

6. PERSONNEL	NAME	PHONE #	7. FREQUENCIES	AM	FM
HEB2	Matt Lingenfelter	970-294-2213	Air to Air FW Unicom 1S7	126.075 122.9	
ATGS (at GAC)	Air Attack from KGIC, go through GVC.		A/G Pri Hanover A/G Sec Hanover A/G 3 IDL A/G 17 A/G 45	166.6750 167.9500 151.1450 167.9875 167.6500	
FAO	Willy Acton	208-507-0942	High Camp	Rx 173.1625 TX 166.000	Tone: 146.2 Tone: 114.8

Mgr 669AC	Matt Lingenfelter	970-294-2213	
Mgr H37HX	Dana Johnston	971-404-1366	

Hanover Aircraft

FAA N#	T Y	MAKE/ MODEL	BASE	STAR T	AVAIL	REMARKS	FAA N#	TY	MAKE/ MODEL	BASE	START	AVAIL	REMARKS
H-669AC	3	AS350 B3 -EU	1S7	0700	0730	Mgr +6							
H-37HX	2	Bell 205A-1 -CWN	1S7	0700	0730	Mgr +7							

***Aircraft are assigned to Grangeville Dispatch. Request through Grangeville Dispatch.**

FAA N#	T Y	MAKE/ MODEL	BASE	START	AVAIL	REMARKS	FAA N#	T Y	MAKE/ MODEL	BASE	START	AVAIL	REMARKS
H-974	3	Bell 407	Musselshell			Mgr +5	H-3181F	2	UH1F	GIC			Restricted
H221JB	3	Bell 407	GIC			Mgr +5	H-502HQ	2	Bell 205-1	Powell			Mgr +Rapps
H-214KA	2	Bell 212HP	S89			Mgr +5	404AJ	1	CH47D	GIC			Bucket

NAME	LATITUDE	LONGITUDE	HIGE/HOGE/Elev.	REMARKS / HAZARDS
Slate Creek Airstrip 1S7	45 40.7	116 17.90	1660	Wires. Has windsock
H1 Florence Spike	45 31.13	116 00.38	6000	T1
Bullion Mine Helispot	45 27. 715	115 57.696		T3 Div A, Dozer line/Handline meet (l
H16	45 38. 558	116 01.90		T2 --Lots of vehicle traffic/Spike Camp
Gold Bug Helispot	45° 29.037N	116° 1.902'W	6400	T2
McMeekin Helispot	45° 28.792N	115° 55.928'W	3100	T3- Hover Hole
Neil Helispot	45 29.015	116 01.875	6,400	T2 Private Property, dusty, no land use agreement at this time. (emergency use only)
Allison Helispot	45 25.114	116 09.858	1800	T3 - Evaluate everytime prior to landing. Open to public.

/s/ Jason Brooks ASGS (t)

Safety Message

HANOVER TOP FIRE

Operational Period: 8/30 – 9/3/2017 Day

Situational Awareness (SA): Assess your work area constantly to identify, assess and mitigate any hazards impacting your operations. Communicate to everyone hazards not immediately mitigated and mark accordingly. Maintain SA to notice changes in the fire environment.

Items to focus on:

Fire weakened trees

Rolling material

Bears – Keep areas clean of food, pack out trash

Hydration

Thunderstorms and lightning

LCES, 10 Standard Fire Orders and 18 Watchout Situations: Don't let your guard down. The fire is still smoldering in places and could become active in lighter fuels. Have LCES in place when conditions warrant. Adhere to the 10 Standard Fire Orders and use the 18 Watchout Situations to enhance your SA of the fire environment.

Travel: Driving distances are long on narrow paved and dusty dirt roads. Drive slowly with headlights on and move over for oncoming vehicles

Emergency Medical Plan: Review your medical protocols continuously as transport times will change depending where you are on the fire.

Communications: You will be back on the Agencies communications for the rest of the assignment. Be aware of areas with limited communications and use human repeaters if necessary.

Personal Well Being: Stay healthy by getting plenty of rest, hydrating regularly, eating an adequate amount of food, and taking care of minor medical problems.

Take your time while performing task

Assess our work area for hazards and mitigate as needed

Use SA to make Good Decisions

Safety Officer: Rob Martin



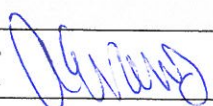
Ch	Salmon River IA (Grp 12)	Assignment	RX	Tone	TX	Tone	User Selectable Tones*	Location
1	A/G Pri	Primary A/G Hanover	166.6750	0.0	166.6750	110.9		
2	A/G Sec	Secondary A/G Hanover	167.9500	0.0	167.9500	77.0		
3	IDL - Woodrat	Woodrat Rpt	159.4500	136.5	151.3100	131.8		
4	Nez West	Local Repeaters	170.5625	0.0	164.1375	136.5		
5	PAF - Hershey Point	Payette Rpts	171.5500	0.0	165.0750	146.2	5 - Heavens Gate	SW of Riggins
6	WWF		170.6000	0.0	167.9625	156.7	6 - Pilot Knob	NE of Fire
7	IDCO Rptr	Idaho County Rpts	154.1150	0.0	156.0150	167.9		
8	COM Use 1		163.7125	0.0	163.7125	186.2		
9	COM Use 2		168.6125	0.0	168.6125	100.0		
10	EMS-2	EMS	155.2800	0.0	155.2800	107.2	10 - Slate Point	West of Fire
11	IDL DIR 2	IA Direct	159.2850	77.0	159.2850	114.8	11 - High Camp	NW of Fire
12	A/G 3 (IDL)	AG	151.1450	0.0	151.1450	127.3		
13	A/G 17	AG	167.9875	0.0	167.9875	141.3	13 - Cold Springs	West of Riggins
14	A/G 45	AG IA	167.6500	0.0	167.6500	151.4	14 - Elk City TP	
15	Fire Tac 1	TAC - Div A/D/Z, P/Y	169.1250	0.0	169.1250	162.2	15 - Black Butte	South Central
16	Fire Tac 2	TAC - Div G/J/M	166.5625	0.0	166.5625	88.5		

*Channel 4 Nez Perce West Repeaters - Use User Selectable Tones for these repeaters.

MEDICAL PLAN (ICS 206 WF)

Incident/Project Name		1. Operational Period					
Hanover Fire		Date/Time August 30- September 5, 2017 0600-2000					
2. Ambulance Services							
Name	Complete Address	Phone & EMS Frequency		Advanced Life Support (ALS)			
				Yes	No		
Riggins Ambulance	Riggins Idaho	911		No	X		
Syringa General Hospital	Grangeville, ID	208-983-1700		No	X		
3. Air Ambulance Services and River Rescue							
Name	Phone	Type of Aircraft & Capability					
LIFEFLIGHT	Dispatch: 800-232-0911	Air Ambulance Nurse & Paramedic, NVG Capable (Use Ch EMS-2 for contact with helicopter)					
Idaho County Sheriff SAR	Dispatch: 208-983-1100	Call Dispatch to deploy SAR and Water Rescue					
Two Bear Air Whitefish, MT	Dispatch: 406-758-5610 406-370-2890	Call in event of River Incident or ask Idaho County Sheriff to dispatch					
4. Hospitals							
Name Complete Address	Degrees Decimal Minutes DD° MM.MMM' N - Lat DD° MM.MMM' W - Long	Travel Time Air Gnd		Phone	Helipad Yes No	Level of Care Facility	
Syringa General 607 W. Main Grangeville, ID 83530	Lat: N 45 56.459	20 min	60 min spike	208-983-1700	<input type="checkbox"/>	<input checked="" type="checkbox"/>	NO Pad Coordinates are for landing at Idaho Count Airport (KGIC)
	Long: W 116 07.097						
	VHF:						
St. Joseph's Regional 415 6 th Street Lewiston, ID 83501	Lat: N 46° 25.016	20 min	1.75 hr spike	208-743-2511	<input checked="" type="checkbox"/>	<input type="checkbox"/>	Level II Trauma
	Long: W 117 01.449						
	VHF:						
University of Utah 50 N. Medical Dr. SLC, UT 84132	Lat: N 40° 46.004	*See Note	8.5 hrs	801-581-2700	<input checked="" type="checkbox"/>	<input type="checkbox"/>	Level 1 Trauma & Burn Center-Air intercept transport options will be handled per incident. Contact MEDL
	Long: W 111° 50.187						
	VHF:						
Legacy Emanuel Hospital 2801 N Gantenbein Ave Portland, OR 97227	Lat: N 45° 32.588	*See Note	7 hrs	503-413-2200	<input checked="" type="checkbox"/>	<input type="checkbox"/>	Level 1 Trauma & Burn Center-Air intercept transport options will be handled per incident. Contact MEDL
	Long: W 122 40.226						
	VHF:						
Division Branch Group		Area Location Capability					
<h1 style="font-size: 2em; margin: 0;">SPIKE</h1>		EMS Responders & Capability		EMPF Nikolas Lund			
		Equipment Available on Scene:		ALS Capability & 100 Man Kit			
		Medical Emergency Channel:		Command Channel/Div D Tac			
		ETA for Ambulance to Scene:		1.5 hrs if calling 911 Ambulance Service			
		Air:		20-30 Minutes to scene			
		Ground:		1.5 hrs			
		Approved Helispot:		Goldbug/H1			

MEDICAL PLAN (ICS 206 WF)

DIV A/D/G	EMS Responders & Capability	EMPF Nikolas Lund	
	Equipment Available on Scene	ALS Ambulance /Air ambulance can be requested	
	Medical Emergency Channel:	Tac on Ground/Command Channel	
	ETA for Ambulance to Scene:	Local ambo 1.5 hrs	
	Air:	20-30 min ETA for Lifeflight to scene. Minor Injury flight time approx. 20 minutes to hospital Major Injury flight time approx. 1.5 + hrs to higher care	
	Ground:	90 min	
	Approved Helispot:	Bullion Mine/Allison/Goldbug/H1 See Air Ops Plans for lat/long	
DIV Z	EMS Responders & Capability	Utilize Helitak EMT and contact Lifeline to coordinate transport if needed	
	Equipment Available on Scene	ALS Ambulance /Air Ambulance can be requested	
	Medical Emergency Channel:	Tac on Ground/Command Channel	
	ETA for Ambulance to Scene:	Local ambo 1.5 hrs	
	Air:	20-30 min ETA for Lifeflight to scene. Minor Injury flight time approx. 20 minutes to hospital Major Injury flight time approx. 1.5+ hrs to higher care.	
	Ground:	90 min	
	Approved Helispot:	Bullion Mine/McMeekin See Air Ops Plans for lat/long Shepp Ranch Landing Strip N 45 26.295 W 115 39.929	
DIV J/M/P	EMS Responders & Capability	EMPF Nikolas Lund	
	Equipment Available on Scene:	ALS Ambulance/Air Ambulance can be requested if needed	
	Medical Emergency Channel:	Tac on Ground/Command Channel	
	ETA for Ambulance to Scene:	Local ambo 1.5 hrs	
	Air:	20-30 min ETA for Lifeflight to scene. Minor Injury flight time approx. 20 minutes to hospital Major Injury flight time approx. 1.5+ hrs to higher care.	
	Ground:	90 min	
	Approved Helispot:	H16	
	Lat:	N 45 38.558	
	Long:	W 116 01 90	
	5. Prepared By:		6. Date/Time
Duane Deck MEDL Amy Evans, MEDL 		August 29, 2017	Mark Shiery, SOF2
			8. Date/Time
			August 29, 2017

Hanover Fire – Suppression Rehab Plan
Updated – August 24, 2017
Team updates 8/28/17

The following recommendations are for Fire Suppression financed rehabilitation

ICP / Spike Camp / Helibase

- Remove all temp facilities, fire-related signs, litter
- Grade portions of road into Adams spike camp
- Potentially seed spike camp, tbd
- READ to consult with BLM on any specific rehab needs at ICP,
- Helibase rehab needs?

Roads / Drop Points / Helispots

- Removal all fire-related signs/flagging/litter along roads, drop points, and helispots
- Notify READ of any damaged culverts

Division	Location	Required Rehabilitation	Completed
A/D	394 (from little slate saddle to 221)	Water & Grade, clear ditch lines and plugged culverts Type 3 will continue	8/28/17
A	DP10 & Div Break	DP10 – rehab, Div A/D Break – Partial rehab, pull berm and pile slash, remainder left for processing decks	8/24/17
D/G	643 (from 394-221)	Water & Grade, drainage, clear ditch lines and plugged culverts, Tbd	8/25/17
D	643 RD (jnct 221 west to Florence)	Water and Grade	8/26/17
D	DP 1, 3, 4, 5	DP5 – Full rehab, keep 643 road open/passable. DP3 – Done DP4 – new Spike Camp DP1 – Need to remove logging decks	8/25/17
D	H1	Seeding?, Grading, Tbd (Completed by Type 3 Team upon spike camp removal)	8/25/17
G/J	221 (394 jnct to 444)	Water & Grade gravel portion, remove roadside slash, clear ditch lines where applicable	8/24/17
M	354 (221 to FS boundary)	Water & Grade Type 3 will continue	8/28/17
M	444 (221 to fire line end)	Rock rake, Water & Grade, clear ditch lines and plugged culverts	8/27/17
M	DP16	Backhaul Mark 3 pump and 2 sprinklers. Volcum pump still in use (see draft site section)	8/24/17

Machine Constructed Lines and Landings

Recommend *thumbed excavator* to rehabilitate lines. Rehab includes pulling in berm material and placing downed trees, duff and slash back over the line (obliteration style). Construct waterbars along dozer line/skid trails that exceed 30% slope. Place waterbars every 50 to 100 ft depending on slope.

Division	Location	Required Rehabilitation	Completed
A	Dozer line (2010B RD going south)	Obliterate using methods above, Dozer line also present on private property, need to contact owner. Type 3 will continue	8/28/17
A	Dozer line (394 to Scott Saddle)	Obliterate dozer line using methods above and reseed. Block motorized access on dozer line. Do NOT obliterate portions of 163 trail.	8/28/17
A	Dozed Trail 88 - Bullion Trail (DP10 to Bullion Mine)	Trail dozed open. Needs drainage and tread re-pair from dozer damage. Berms pulled back. Do NOT obliterate system trail 88. Recommend Mini-X. Partially done – Type 3 will continue	8/28/17
A	Dozer line (9919 Rd to 88 Trail)	Obliterate using methods above. Tank trap access off 9919 and 88 trail.	8/26/17
D	Dozer line/Fireline (9918 Rd to 394 Rd)	READ to check access prescription on 9918B RD, possible full obliterate or leave road open, tbd.	
D/G	643 Fire line (221 Rd to 394 Rd)	Potential machine slash piling on portions? Rehab skid trails using above method where heavy skidding occurs and slopes >30%. (Leave open in case needed)	8/24/17
D/G	643 Fireline Landings/staging	643/9935, junction needs to be rehabbed using method above (Logs need to be removed first)	8/24/17
G	Dozer Line (221 to Boulder Ck)	Obliterate dozer line using methods above. Block motorized access on dozer line from both ends of 221. HEADS UP – historic trail exists near Boulder Creek, do not decommission, marked with orange flag.	8/27/17
M	Fire line along 444	Low stump, obliterate skid trails, pile slash in heavy areas, remove blue flagging	8/27/17
M	Fireline (88 trail to 444 Rd)	Obliterate dozer line using methods above and reseed. Block motorized access on fireline	8/27/17

Hand Line

Pull berm and duff back into handlines and cover with brush and/or wood (if available). Construct waterbars along handline that exceeds 30% slope. Place waterbars every 50 to 100 ft depending on slope. Collect hose lay, burned hose, and trash.

Division	Location	Required Rehabilitation	Completed
A	Scott Ranch	Rehab handline on private potentially?	8/26/17
A	Bullion Mine to Salmon River handline	Obliterate handline, do not obliterate 88 system trail (trail crew)	8/25/17
J/M	88 Trail (Rocky Bluff to Boulder Ck)	Pile and paper slash along trail Dead firewood piled next to trail.	8/27/17
M	88 Trail (221 Rd to 444 Rd)	Chip where applicable access allows, pile and paper slash otherwise	8/27/17

Drafting Sites

Remove pumps, hoses, fittings, fuel containment, signs, and litter associated with these sites

Division	Location	Required Rehabilitation	Completed
D	Tender fill site along 9922 RD Along Meadow CK	Harden with pit run	8/25/17

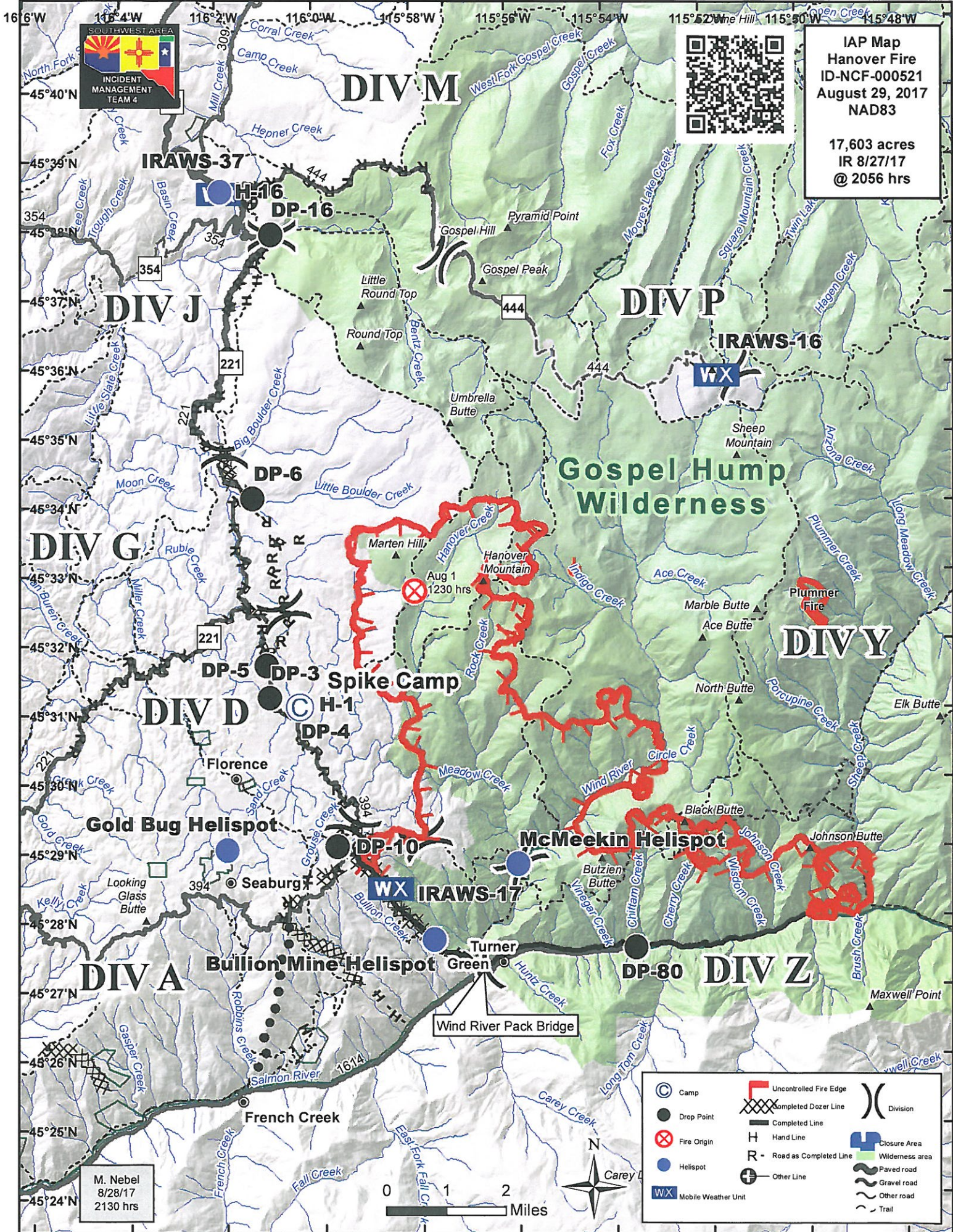
Recreational / Cultural Sites / Infrastructure / Private Lands

Division	Location	Required Rehabilitation	Completed
A	Bullion Trailhead (near DP10)	Re-install gate, barrier rocks, seed, rehab ground disturbance at site entrance. Type 3 will fix	8/26/17
D	Florence Jail, Cemetery, FS Cabins, signs, kiosks	Remove wrap/plumbing/flagging Stays in place	8/26/17
D	Florence Private Property	Remove any suppression equip Per District: Remove pumps only	8/26/17
M	Rocky Bluff CG	Remove wrap, re-install trail sign, remove plumbing/wrap on 2 bridges	8/24/17
M	Slate Lakes 313 Trailhead	Remove wrap, rehab trail entrance	8/25/17
M	3 Dispersed Rec Sites along 444	Low stump, remove slash, rehab ground disturbance, remove flagging. Remove wrap	8/24/17
M	Square Mtn/Moore's Guard Station	Remove wrap on both, slash at Moore's to be piled if needed. Needs to stay	8/26/17
Z	2 Wind River Pack Bridges	Remove plumbing, wrap	
Z	McMeekin Ranch	Type 3 will continue Consult with owner. Suppression equip to be removed Some stuff removed	8/28/17
Z	Near Allison Ck Picnic Area	Remove Helispot flagging	
Z	Vinegar Creek	Remove wrap on fuel storage	8/22/17
Z	Sheep Creek Bridge	Remove Plumbing Type 3 will continue	8/28/17
Z	Shepp Ranch Private	Remove suppression, plumbing, etc. Type 3 will continue	8/28/17

Jeremy Harris, Resource Advisor
 Alexandra Rozin, Resource Advisor Trainee
 Nez Perce- Clearwater National Forest

List of Intrusion Types and Units

Equipment Type	Units of Measure
Most Frequently Use:	
Helicopter	Landings, # of: Rappelers, # of: Sling loads / longlines, # of: Cargo drops # of: Incendiary material drops, # of:
Air tanker	Retardant drops, # of:
Airplane	Smokejumper drops, # of Cargo Drops, # of
Chainsaw	# of # of days authorized # of days used
Potable Pumps	# of # of Days Authorized # of Days Used
Generator	# of # of Days Authorized # of Days Used
Helispots	# constructed – give details: Where?
Other: Air compressor, ATV, Battery-Powered Tool, Bicycle, Concrete Equipment, Float Plane, Heavy Equipment, Float Plane, Watercraft, Rock Drill, Snow Machine, Truck, Wheelbarrow, Wheeled Litter, Motorized Winch, etc.	



SOUTHWEST AREA
INCIDENT MANAGEMENT TEAM 4



IAP Map
Hanover Fire
ID-NCF-000521
August 29, 2017
NAD83

17,603 acres
IR 8/27/17
@ 2056 hrs

M. Nebel
8/28/17
2130 hrs



MEDICAL PLAN (ICS 206 WF)

Medical Incident Report

FOR ALL MEDICAL EMERGENCIES: IDENTIFY ON SCENE INCIDENT COMMANDER BY NAME AND POSITION AND ANNOUNCE "MEDICAL EMERGENCY" TO INITIATE RESPONSE FROM IMT COMMUNICATIONS/DISPATCH.

Use items one through nine to communicate situation to communications/dispatch.

1. CONTACT COMMUNICATIONS/DISPATCH

Ex: "Communications, Div. Alpha. Stand-by for Priority Medical Incident Report." (If life threatening request designated frequency be cleared for emergency traffic.)

2. INCIDENT STATUS: Provide incident summary and command structure.

Nature of Injury/Illness		<i>Describe the injury (Ex: Broken leg with bleeding)</i>
Incident Name		<i>Geographic Name + "Medical" (Ex: Trout Meadow Medical)</i>
Incident Commander		<i>Name of IC/Point of Contact</i>
Patient Care		<i>Name of Care Provider (Ex: EMT Smith)</i>

3. INITIAL PATIENT ASSESSMENT: Complete this section for each patient. This is only a brief, initial assessment. Provide additional patient info after completing this 9 Line Report.

Number of Patients:	Male / Female	Age:	Weight:
Conscious? <input type="checkbox"/> YES <input type="checkbox"/> NO = MEDEVAC!			
Breathing? <input type="checkbox"/> YES <input type="checkbox"/> NO = MEDEVAC!			
Mechanism of Injury: <i>What caused the injury?</i>			
Lat/Long (Datum WGS84) Ex: N 40° 42.45' x W 123° 03.24'			

4. SEVERITY OF EMERGENCY, TRANSPORT PRIORITY

SEVERITY	TRANSPORT PRIORITY
<input type="checkbox"/> URGENT-RED Life threatening injury or illness. <i>Ex: Unconscious, difficulty breathing, bleeding severely, 2° – 3° burns more than 4 palm sizes, heat stroke, disoriented.</i>	Ambulance or MEDEVAC helicopter. Evacuation need is IMMEDIATE .
<input type="checkbox"/> PRIORITY-YELLOW Serious Injury or illness. <i>Ex: Significant trauma, not able to walk, 2° – 3° burns not more than 1-2 palm sizes.</i>	Ambulance or consider air transport if at remote location. Evacuation may be DELAYED .
<input type="checkbox"/> ROUTINE-GREEN Not a life threatening injury or illness. <i>Ex: Sprains, strains, minor heat-related illness.</i>	Non-Emergency. Evacuation considered Routine of Convenience .

5. TRANSPORT PLAN:

Air Transport: (Agency Aircraft Preferred)

<input type="checkbox"/> Helispot	<input type="checkbox"/> Short-haul/Hoist	<input type="checkbox"/> Life Flight	<input type="checkbox"/> Other
-----------------------------------	-------------------------------------------	--------------------------------------	--------------------------------

Ground Transport: [Click here to enter text.](#)

<input type="checkbox"/> Self-Extract	<input type="checkbox"/> Carry-Out	<input type="checkbox"/> Ambulance	<input type="checkbox"/> Other
---------------------------------------	------------------------------------	------------------------------------	--------------------------------

6. ADDITIONAL RESOURCE/EQUIPMENT NEEDS:

<input type="checkbox"/> Paramedic/EMT(s)	<input type="checkbox"/> Crew(s)	<input type="checkbox"/> SKED/Backboard/C-Collar
<input type="checkbox"/> Burn Sheet(s)	<input type="checkbox"/> Oxygen	<input type="checkbox"/> Trauma Bag
<input type="checkbox"/> Medication(s)	<input type="checkbox"/> IV/Fluid(s)	<input type="checkbox"/> Cardiac Monitor/AED
<input type="checkbox"/> Other (i.e. splints, rope rescue, wheeled litter)		

7. COMMUNICATIONS:

Function	Channel Name/Number	Receive (Rx)	Tone/NAC *	Transmit (Tx)	Tone/NAC *
COMMAND	Click here to enter				
AIR-TO-GRND					
TACTICAL					

*(NAC for digital radio system)

8. EVACUATION LOCATION:

Lat/Long (Datum WGS84) EX: N 40 42.45' x W 123 03.24'	
Patient's ETA to Evacuation Location:	
Helispot/Extraction Size and Hazards:	

9. CONTINGENCY:

Considerations: <i>If primary options fail, what actions can be implemented in conjunction with primary evacuation method? Be thinking ahead...</i>	REMEMBER: Confirm ETA's of resources ordered Act according to your level of training Be Alert. Keep Calm. Think Clearly. Act Decisively.
------------------------------------------------------------------------------------------------------------------------------------------------------------	----------------------------------------------------------------------------------------------------------------------------------------------------------------