

INCIDENT ACTION PLAN

Mike Almas Incident Management Team

SAPPHIRE COMPLEX

MT – LNF – 001463

USFS: P1K7XL (0116); IDL: FED11417
DNRC: 767012; DOI: K7XL

**WEDNESDAY,
SEPTEMBER 6, 2017**

**DAY SHIFT: 0700 – 2000
NIGHT SHIFT: 1800 - 0800**



Suppression Repair



Transportation



Air Ops Branch I



Air Ops Branch II



Ops IR Topo Background



Ops IR Aerial Photo
Background



Topo Fire Perimeter Only



INCIDENT OBJECTIVES ICS-202	1. INCIDENT NAME SAPPHIRE COMPLEX	2. DATE 09/06/17	3. TIME 0700 – 2000 1800 – 0800
--	--	---------------------------------------	--

MANAGEMENT OBJECTIVES:

- Implement good risk management practices in order to provide for firefighter, other responder and public safety.
Use good risk analysis processes including the principles of the 10 Standard Fire Orders, LCEs, and the 18 Watch-Out Situations as the foundation for risk decisions at all levels.
Continue the evaluation of long-range risk management strategies with the incident management organization and the Agency Administrators.
- Ensure timely and accurate dissemination and coordination of information regarding fire related activities is provided to the public, cooperators, elected officials and stakeholders.
- Evaluate all management actions on a cost versus benefit basis.

OPERATIONAL OBJECTIVES:

- Manage all three fires in the Sapphire Complex (Goat Creek, Sliderock and Little Hogback) under a full range of suppression strategies.
Use point and/or zone protection tactics where needed to minimize impacts to values at risk and firefighter exposure.
Prioritize values at risk as follows: Private lands, infrastructure, grazing allotments, and natural, cultural, and heritage resources.
- Provide initial attack support on the Lolo National Forest and initial attack response on Montana DNRC and Beaverhead-Deerlodge National Forest protection within the Temporary Flight Restriction (TFR).
- Coordinate suppression repair actions with the assigned Resource Advisor prior to implementation.

COMMANDERS INTENT:

Strategy: The Sapphire Complex strategy is based on "Values at Risk" with Firefighters and the Public being the highest value. We will engage the fire on our terms at the appropriate tempo, where probability of success is high and the risk is mitigated to acceptable levels.

Task: To use Risk Management Principles when engaging the fire. Know when, where and why to engage the fire, and what the values and hazards are.

Purpose: To reduce firefighter exposure to existing hazards on the fire and understand why you are being asked to accept the risk.

End State: Reduce the potential of a bad outcome.

Task: To meet the intent of the Management and Operational objectives.

Purpose: To provide the highest level of customer services for all involved with or affected by the incident.

End State: Progress has been made toward meeting all incident objectives. Stakeholders and agencies have been communicated and coordinated with at a high level. Resource Advisors have been engaged during suppression and repair efforts.

Attachments

Organization List (ICS 203)
 Fire Weather Forecast
 Fire Behavior Summary
 Safety Message

Division Assignments (ICS 204's)
 Communications Plan (ICS 205)
 Medical Plan (ICS 206)
 Air Ops Summary (ICS 220)

Miscellaneous Messages
 Transportation / Fire Maps
 Unit Log
 Emergency Medical Procedures / 9-Line

PREPARED BY (PLANNING SECTION CHIEFS)

Dave Lattimore,
 Dick Schwecke,

Dick Schwecke

APPROVED BY (INCIDENT COMMANDER)

Mike Almas

Mike Almas

ORGANIZATION ASSIGNMENT LIST ICS-203		9. Operations Section	
1. Incident Name SAPPHIRE COMPLEX		Line Ops	Randy McKenzie, Sam Gibbons
		Planning Ops	Jim Grant
		a. Branch I	
2. Date 9/05/2017	3. Time 2000	Division/Group G (Goat Crk)	Jamie Long, Jeremiah Hanks (T)
		Division/Group G (Sliderock)	Jamie Long, Jeremiah Hanks (T)
4. Operational Period 9/06/2017 DAY SHIFT 0700-2000 NIGHT SHIFT 1600-0800		Division/Group	
		Division/Group	
5. Command		Division/Group	
Incident Commander	Mike Almas	Division/Group	
Deputy	Roger Staats		
Safety Officer	Jim Bartlett, Bill Altman, Craig Cowie, Brandon Skinner (T), J.D. Bauman (T), Gary Sexton	b. Branch II	
Information Officer	Jennifer Costich-Thompson	Division/Group N	Matt White, Wes Duncan (T)
Liaison Officer	Mark Harvey, Dan Jacobs Jason Steinmetz (T)	Division/Group O	Jeffrey Handel, Jon Devino (T)
6. Agency Representatives		Division/Group P	Russ Frei, Amanda Holt (T)
Agency	Name	Division/Group Z	Vance Hazelton, Alan Carlson (T)
USFS – Lolo NF	Jen Hensiek, Dale Deiter	Division/Group Structure	Ron Roberts, Waylon Meek (T)
DNRC	Brian Robbins	Division/Group Night	Nate Arellano
BLM	Joe Ashor		
USFS – B-D NF	Cameron Rasor	c. Branch III	
7. Planning Section			
Chief	Dave Lattimore		
Deputy	Dick Schwecke		
Resources Unit	Karl Dekome		
Situation Unit	Bill Coates, Glenn Palmgren (T)		
GIS	Adam Ridley, Luke Floch, Fay Ellen Dearing (T) Chantelle Delay		
Documentation Unit	Richard McKnight		
Demobilization Unit	Laurie Oliver	d. Air Operations Branch	
Status-Check In	David Lemmien	Air Ops Branch Director	Hugh Carson, Vince Welbaum (T)
FBAN	Tim Klukas	Air Support Group Supervisor	Carl Ritchie
LTAN	Patrick Doyle (T)		
CTSP	Brent Conrad, Sherry Rivera		
Weather Forecast	Kelly Hooper, Derek Williams (T)		
HRSP	Dale Tribby		
Training Specialist	Angelic Koch		
BLM READ	Lea Tuttle		
B-D READ	Wade Jerome		
Lolo READ	Kate Arendt		
Field Observers	Matt Eldridge	10. Finance Section	
8. Logistics Section		Chief	LeAnn Maupin
Chief	Ed Hinds	Deputy	
Deputy	Dave Klym	Time Unit	Barbara King, Christopher Remsen (T)
Supply Unit	Linda Blondeau	Procurement Unit	Jeffrey Worthley (T)
Facilities Unit	Cody Hobart, Patrick Merrill	Compensation/Claims Unit	
Ground Support Unit	Gerard Maney	Cost Unit	Annette Hoyer
Communications Unit	Jeannie Nez Perce	Prepared by (Resource Unit Leader Karl Dekome, RESL Dick Schwecke, PSC	
Communication Tech	Roger Menard		
Medical Unit	Peggy Miller, Dave Poxleitner (T)		
Security Unit	Pete Dean (208) 451-4280		
Food Unit	Sally Kuhlberg		
Ordering Manager	Susan Hillstrom, Joshua Bender		
RCDM	Lydell Bell, Richard Pane		



Fire Weather Forecast

FORECAST NO: 52

SHIFT DATE: Wed September 6, 2017

FORECAST ISSUED: September 5, 2017

NAME OF FIRE: Sapphire Complex

UNIT: MT-LNF

Incident Meteorologist (T): Derek Williams 208-252-2291

Incident Meteorologist: Kelly Hooper 270-217-0860

Derek Williams

Kelly Hooper

DISCUSSION: Slightly warmer temperatures and drier conditions are once again expected today as high pressure moves over the region. Smoke will limit high temperatures to the upper 70s and lower 80s with minimum relative humidity dropping into the lower to middle teens this afternoon. Winds will be primarily terrain driven but ridgetops will experience a light northwest wind in the afternoon of 5-7 mph.

TODAY:

WEATHER: A bit warmer and drier. Thick smoke in the morning. Thinning smoke and lingering haze in the afternoon.

WIND (20 FT): Valleys: Upslope/upvalley 4-7 mph

Ridges: Variable in the morning, becoming N-NW 5-8 mph in the afternoon.

MAX TEMPERATURES: Valleys 85-88, Ridges 79-82

MIN RH: Valleys 13-18% Ridges 16-21%

HAINES INDEX: 4 LAL: 1

CHANCE OF WETTING RAIN: 0%

INVERSION: Inversion lifting 1300 MDT, lingering smoke and haze.

TONIGHT:

WEATHER: Increasing smoke.

WIND (20 FT): Valleys: downslope/downvalley 3-6 mph.

Ridges: E-SE 4-6 mph.

MIN TEMPERATURES: Valleys 40-45, Ridges: 55-60

MAX RH: Valleys: 60-70% Ridges: 30-40%

HAINES INDEX: 4 LAL: 1

CHANCE OF WETTING RAIN: 0%

THURSDAY:

WEATHER: Areas of smoke and haze. Mostly sunny.

WIND (20 FT): Valleys: Upslope/upvalley 4-8 mph

Ridges: Light and variable in the morning, becoming east 4-6 mph in the afternoon.

MAX TEMPERATURES: Valleys 84-88, Ridges 78-81

MIN RH: Valleys: 15-20% Ridges: 20-25%

HAINES INDEX: 5 LAL: 1

CHANCE OF WETTING RAIN: 0%

Friday through Monday: A weak weather disturbance will bring a chance for showers and thunderstorms to western Montana late Thursday into Saturday. The best chances for a showers and thunderstorms appear to be Friday, but significant rainfall is not expected and smoke may inhibit shower and thunderstorm development to a degree. Shower and thunderstorm chances diminish Saturday as a cold front moves through the region. Windy conditions are possible over the weekend as well. A dry pattern will set up early next week.

FIRE BEHAVIOR FORECAST

FORECAST NUMBER: 27	TYPE OF FIRE: Wildfire
FIRE NAME: Sapphire Complex	OPERATIONAL PERIOD: 09/06/2017 0600 - 2100
DATE ISSUED: 09/05/2017 @ 2000	
UNIT: MT-BDF	SIGNED: Tim Klukas FBAN

INPUTS

WEATHER SUMMARY:

Humidity recovery was good last night. Warmer temperatures are anticipated today, and relative humidity will continue to be low (14-19%). Winds will be out of the N-NW @ 5-8 mph along ridges in the afternoon and terrain driven in the valleys. Haines Index of 4. **See Fire Weather Forecast**

Local RAWs Observations (GIRD RAWs Station ID: 242911)					
Index	90 th Percentile	97 th Percentile	Previous Days 1300 Observation (04 SEP 2017)	Yesterdays' 1300 Observation (05 SEP 2017)	Todays Forecasted 1300 Observation (06 SEP 2017)
Energy Release Component (ERC)	65	75	76	79	78
1 Hr Fuel Moisture	4%	3%	7%	4%	4 %
10 Hr Fuel Moisture	5%	4%	6%	5%	5 %
100 Hr Fuel Moisture	7%	6%	6%	6%	7 %
1000 Hr Fuel Moisture	8%	8%	8%	7%	8%
Woody Fuel Moisture	70%	70%	70%	70%	70%

OUTPUTS

FIRE BEHAVIOR

GENERAL:

Fire activity will initiate after the inversion breaks today. Look for isolated to group torching events in areas with sufficient ladder fuels. Anticipate clearing to begin around 1200-1300. Smoke concentrations will have an influence on inhibiting fire activity. Smokes in duff will show themselves later in the day. Reduction in wind will decrease spotting distance and rates of spread. Slight increase of moisture in the light fuels will be short lived. Fire continues to back and flank in Divisions N, O and NW portion of Z at 0.4-0.6 chains per hour. Estimated rates of spread for fire movement in north end of the fire in Division N is 3-4 chains/hour. Possible runs at about .25 miles per hour possible in FM2. Monitor for NW winds in Divn Z today to evaluate potential spotting along control lines areas.

SPECIFIC:

Forested high elevation Lodgepole (TU5): (All Divisions)

- Primary Carrier of fire is heavy forest litter, shrub, and/or small tree understory.
- Key driver to crown fire is ladder fuels and surface winds and terrain alignment

Forested mid-elevation Douglas-fir (TL5): (All Divisions)

- Primary carrier of fire is the high load conifer litter and light slash.
- Many of the Douglas fir have been defoliated increasing surface fuels, however, decrease potential for crown fire initiation.
- Areas will hold heat well in the duff and heavy fuels

Grass/ Sage low-elevation (GS2) or Timber and grass understory (FM2): (All Divisions)

- Primary carrier of fire in the GS2 is grass and shrub combined. Primary carrier for the FM2 is timber litter & grass.
- Steep slopes and higher windspeeds significantly changes fire behavior and intensity.

General Fire Behavior Observations

- Isolated and group torching fire behavior beginning around 1300-1400
- Additional smokes should pop up today in duff and heavy fuels.
- The understory vegetation can be considered cured due to low live fuel moistures.
- Fire activity is likely to occur on the north end of the fire near Beaver Dip and Hogback Pont.

Output Variable	Unit/s	Grass/Sage (GS2)	Timber/Grass Understory (FM2)	Lodgepole (TU5)	Douglas Fir (TL5)
Surface Rate of Spread (maximum)	Ch/hr	20	22	9	6
Flame Length	ft	5	5	8	3
Probability of Ignition from a Firebrand	%	74	74	74	74
Spotting Distance	mi	0.2	0.1	0.1	0.2

****Although predicted PIG is @ 74% Anticipate higher values in the field due to extremely dry fuels**Validate by taking weather observations.**

*****Valleys and drainages that align with the general winds should expect increased windspeeds and increased fire behavior*****

AIR OPERATIONS:

Morning inversion and smoke will impact visibility for air operations. Inversion should lift after 1300.

SAFETY

We hear about transitions of all sorts being dangerous. The transition back to warmer weather will produce more active fire behavior. Transition from a smoke filled sky to a clear sky will provide a longer burn period. Don't be complacent and miss transitional fire behavior indicators. Evaluate position on slope. Monitor for increase in wind and drops in relative humidity. Is fire behavior picking up in your area?

HEALTH AND SAFETY MESSAGE

SAFETY starts with *YOU*

We are ALL accountable for SAFE behaviors

INCIDENT: **Sapphire**

DATE: **9/6/17**

Major Hazards and Risks:

- 1) Transition- It will occur over the next few days. Help the incoming team gain situational awareness.

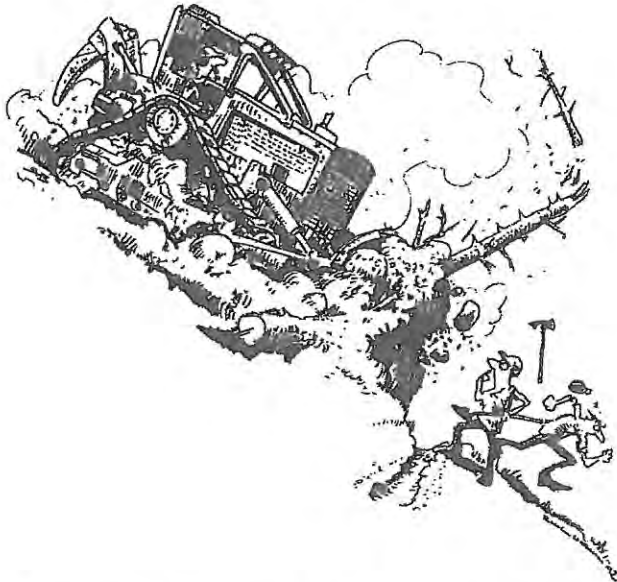
Fire Order of the Day – Retain control at all times

Narrative:

- 1) Transition
 - Get clear, thorough in-briefings
 - Fire well scouted
 - Maintain Situational Awareness
 - Know location of resources
 - Have correct radio frequencies
 - Communicate, communicate, communicate

Let's set the incoming team up for success

Watch Out Situation of the Day



5. UNINFORMED ON STRATEGY, TACTICS AND HAZARDS

Hazardous Materials Procedures

If you encounter outbuildings, vehicles and/or homes being threatened or destroyed by fire – remember: Hazardous materials may be stored, including agricultural or industrial chemicals, explosive substances, propane and other fuel tanks, plastics, etc.

If you encounter what you may suspect may be hazardous materials, generally:

Stay upwind, uphill and avoid smoke;
Isolate the area;
Warn others in the immediate area;
Notify your supervisor of the potential problem so trained specialists can evaluate and mitigate the situation;
If not properly trained and equipped – **do not** get involved.

Remember – If you don't know, don't go, it may blow!!

DIVISION-SPECIFIC MEDICAL EMERGENCY ACTION PLAN

Pre-Planning for today's assignment

What are the likely hazards that could cause injuries? What kind of severe injuries?	
Who is the likely in-charge DIVS or overhead for an emergency in your assigned area today? (i.e. "Division Zulu")	
Who are the Medical personnel assigned to your part of the incident? What are their capabilities?	
Other Emergency Responders: fire dept, crash rescue, ambulance?	
Communications: Command channel, Air to Ground, Medical helicopters, local rescue/medical?	
Transportation methods available	Ground vehicle, drop point, coordinates, travel route?
	Aircraft I.D, helispot names, coordinates? Hoist capable, internal transport.
	Other available methods - contingency
Most likely workforce for evacuation	

Response checklist

Who takes charge?

- DIVS or designated Overhead manages the overall scene and evacuation process.
- Medical personnel and emergency responders manage patients and conduct rescues.
- OPS and IC make command decisions so the emergency can be given full attention and management. They continue to manage ongoing incident operations.

Response sequence:

- First, secure the scene and protect responders and patients from further injury.
- Clear the Command channel for "Emergency Traffic only" if this is a critical emergency. If not, inform Communications of non-critical-emergency status and use normal communications.
- Contact closest Medical personnel and DIVS or designated Overhead for response.
- Notify Communications to initiate Accident Action Plan response.

Information for Communications:

- Type and extent of injuries?
- Airway or breathing problems? Serious bleeding?
- Is an EMT present or needed? Are Paramedics (Advanced Life Support) needed?
- Specific location of patients (Lat/Long, access route, DP#, helicopter Landing Zone)?
- What type of transport is needed? Helicopter medevac, hoist, ambulance or ground transport?
- Name of contact person in charge of the scene.
- Do not use names of patients at any time.
- Medical Emergency Responders confer with Medical Unit Leader and DIVS or designated Overhead to determine if this is a critical emergency and what type of transport is needed.

DIVISION ASSIGNMENT LIST	1. Branch 1	2. Group G (Goat Creek)
---------------------------------	-----------------------	-----------------------------------

3. Incident Name Sapphire Complex	4. Operational Period Date: 09/06/2017 Time: 0700-2000
---	---

5. Operations Personnel

Operations Chief	Sam Gibbons, Randy McKenzie, Jim Grant	Division/Group Supervisor	Jamie Long, Jeremiah Hanks (T)
Branch Director		Safety Officer	Jim Bartlett, Brandon Skinner (T)

6. Resources Assigned this Period

Strike Team/Task Force/ Resource Designator	Last Shift	Leader	Number Persons	Trans. Needed	Drop Off PT./Time	Pick Up PT./Time
E-41 ENG6 Brockway Const.	9/6	Roger Brockway	3	N	Spike 0700	Spike 2100
E-63 ENG6 High Desert	9/9	Tom Hanks	3	N	Spike 0700	Spike 2100
E-190 WTS2 Castle Mtn Fire	9/16	Josh Greer	1	N	Spike 0700	Spike 2100
E-192 WTS2 Bird Water #8	9/16	Clint Anders	1	N	Spike 0700	Spike 2100
E-44 SKG3 Slack	9/15	Jamie Slack	1	N	Spike 0700	Spike 2100
E-233 EXCA T2 DS JR w/ Lowboy	9/10	Kerry Cross	2	N	Spike 0700	Spike 2100
E-242 Log Truck Joe Thomas	9/14	Joe Thomas	1	N	Spike 0700	Spike 2100
E-251 Log Loader Bryant w/ Lowboy	9/14	Bryce Rasmussen	2	N	Spike 0700	Spike 2100
E-54 UTV Bouche 95754				N	Spike 0700	Spike 2100
O-122 FAL1 Timber Trail	9/18	Seitz & Chitwood	2	N	Spike 0700	Spike 2100
O-347 HEQB	9/6	Kevin Lemieux (T)	1	N	Spike 0700	Spike 2100
O-356 EMTF	9/7	Brian Williamson	1	N	Spike 0700	Spike 2100

7. Control Operations
Continue mop up of dozer line and patrol of fire perimeter from H6 North to the 4305 road. Support and implement suppression rehab needs on north and east ends of Goat Creek Fire. Mop up standards are based off your experience and knowledge of fuels, weather and topography to lower the probability of escape to acceptable levels.

8. Special Instructions
If FIRE is within one mile of powerline notify Branch 1 Director.
Notify Branch 1 Director two hours prior to conducting any work under the powerline.
Coordinate with READ on resource protection needs.
Gather GPS tracks of all constructed line in Division and turn into the Situation Unit.
Specific hazard mitigation:

- Follow the hazard tree mitigation process on page 22 of the IRPG.
- Maintain a 100 foot exclusion area around equipment.

9. Division/Group Communication Summary

Function	RX Frequency	TX Frequency	Tone	Channel	Function	RX Frequency	TX Frequency	Tone	Channel
Tactical	168.0500	168.0500	123.0	1	Command	166.3375	170.3875	123.0	9
Command	168.1000	170.4500	123.0	7	Command	164.6750	169.8125	123.0	10
Command	169.5375	164.7125	123.0	8	Air to Ground				

Prepared by (Resource Unit Leader) <i>Carl Delwone</i>	Approved by (Planning Section Chief) <i>W A Schwecke</i>	Date 9/05/2017	Time 2000
---	---	-------------------	--------------

DIVISION ASSIGNMENT LIST				1. Branch 2		2. Group N (Little Hogback)				
3. Incident Name Sapphire Complex				4. Operational Period Date: 09/06/2017 Time: 0700-2000						
5. Operations Personnel										
Operations Chief		Sam Gibbons, Randy McKenzie, Jim Grant			Division/Group Supervisor			Matt White, Wes Duncan (T)		
Branch Director					Safety Officer			Craig Cowie		
6. Resources Assigned this Period										
Strike Team/Task Force/ Resource Designator		Last Shift	Leader		Number Persons	Trans. Needed	Drop Off PT./Time		Pick Up PT./Time	
E-9 ENG3 Hart Ventures		9/9	Tim England		3	N	P Burg ICP 0700		P Burg ICP 2100	
E-185 ENG3 Wildfire Resources		9/13	Reagan Farley		3	N	P Burg ICP 0700		P Burg ICP 2100	
E-188 ENG6 XTREME		9/19	Keith Balka (T)		3	N	P Burg ICP 0700		P Burg ICP 2100	
E-79 WTT2 Mission Mtn Star		9/8	Wesley Harmon		1	N	P Burg ICP 0700		P Burg ICP 2100	
E-126 WTS1 High Sierra Enterprise		9/12	Dale Iseman		1	N	P Burg ICP 0700		P Burg ICP 2100	
E-132 WTS2 Primmer Tender		9/14	Rebecca Daul		1	N	P Burg ICP 0700		P Burg ICP 2100	
E-40 SKG3 Hall Wood Processing		9/16	Jeff Weer		1	N	P Burg ICP 0700		P Burg ICP 2100	
E-177 SKG2 MT. Fire Water		9/9	Carl Warren		2	N	P Burg ICP 0700		P Burg ICP 2100	
E-232 EXCA T2 Welch Bros w/ Lowboy		9/10	Jim Davis		2	N	P Burg ICP 0700		P Burg ICP 2100	
E-243 EXCA T1 St. Onge w/ Lowboy		9/13	Evan Sippl		1	N	P Burg ICP 0700		P Burg ICP 2100	
E-258 EXCA T1 Fousts Inc. w/ Lowboy		9/16	Loren Hull		2	N	P Burg ICP 0700		P Burg ICP 2100	
E-262 EXCA T1 Western Montana w/ Lowboy		9/19	Wyatt Lyons		2	N	P Burg ICP 0700		P Burg ICP 2100	
E-260 Self Loading Log Truck		9/17	Justin Hulford		1	N	P Burg ICP 0700		P Burg ICP 2100	
O-244 TFLD		9/7	Daniel White R&R 9/8-9/9, back 9/10		1	N	P Burg ICP 0700		P Burg ICP 2100	
O-388 TFLD		9/8	Lucas Hurley (T)		1	N	P Burg ICP 0700		P Burg ICP 2100	
O-459 TFLD		9/13	Patrick Kieran		1	N	P Burg ICP 0700		P Burg ICP 2100	
O-460 TFLD		9/13	Todd Ayres (T)		1	N	P Burg ICP 0700		P Burg ICP 2100	
O-457 EMPF		9/19	Rex Nielsen		1	N	P Burg ICP 0700		P Burg ICP 2100	
7. Control Operations										
Patrol and mop up heat and visible heat along Forest Service Road 4325 and dozer line down to Upper Willow Creek. Utilize aircraft as needed. Mop up standards are based off your experience and knowledge of fuels, weather and topography to lower the probability of escape to acceptable levels. Mitigate snag hazards for public and firefighter safety. Rehab using heavy equipment, starting at DP 62, working south along Road 4325. Continue to monitor active fire burning in Bear Creek drainage.										
8. Special Instructions										
Coordinate with READ on resource protection needs.										
Gather GPS tracks of all constructed line in Division and turn into the Situation Unit.										
Specific hazard mitigation:										
<ul style="list-style-type: none"> Review hazard tree safety guidelines, page 22 of the IRPG. 										
9. Division/Group Communication Summary										
Function	RX Frequency	TX Frequency	Tone	Channel	Function	RX Frequency	TX Frequency	Tone	Channel	
Tactical	166.7750	166.7750	123.0	5	Command	166.3375	170.3875	123.0	9	
Command	168.1000	170.4500	123.0	7	Command	164.6750	169.8125	123.0	10	
Command	169.5375	164.7125	123.0	8	Air to Ground					
Prepared by (Resource Unit Leader)				Approved by (Planning Section Chief)				Date		Time
<i>Karl Delaney</i>				<i>D A Schwecke</i>				9/05/2017		2000

DIVISION ASSIGNMENT LIST				1. Branch 2		2. Group P (Little Hogback)			
3. Incident Name Sapphire Complex				4. Operational Period Date: 09/06/2017 Time: 0700-2000					
5. Operations Personnel									
Operations Chief		Sam Gibbons, Randy McKenzie, Jim Grant			Division/Group Supervisor		Russ Frei, Amanda Holt (T)		
Branch Director					Safety Officer		Bill Altman		
6. Resources Assigned this Period									
Strike Team/Task Force/ Resource Designator		Last Shift	Leader		Number Persons	Trans. Needed	Drop Off PT./Time		Pick Up PT./Time
E-27 ENG4 Weber Fire		9/6	Scott Haney		3	N	P Burg ICP 0700		P Burg ICP 2100
E-48 ENG4 Alder Creek E-13		9/8	Boyd Carr		3	N	P Burg ICP 0700		P Burg ICP 2100
E-12 ENG6 Cedar Fire		9/14	Ted Hunter		3	N	P Burg ICP 0700		P Burg ICP 2100
E-125 WTS1 R & J Granger Inc.		9/10	Ron Granger		1	N	P Burg ICP 0700		P Burg ICP 2100
E-191 WTS2 Bird Water #9		9/16	Mike Thomas		1	N	P Burg ICP 0700		P Burg ICP 2100
E-194 WTS2 Bird Water #6		9/16	Todd Benedict		1	N	P Burg ICP 0700		P Burg ICP 2100
E-70 DOZ2 Madden Trucking		9/15	Pat Madden		2	N	P Burg ICP 0700		P Burg ICP 2100
E-179 SKDS Wildland Firefighters		9/10	Larry Pease		2	N	P Burg ICP 0700		P Burg ICP 2100
E-182 SKDS Attack #3		9/13	Chris Dosorcy		2	N	P Burg ICP 0700		P Burg ICP 2100
O-334 TFLD		9/7	Joe Jones		1	N	P Burg ICP 0700		P Burg ICP 2100
E-3 AMBU Three Rivers		10/1	Westgard & Hagestad		2	N	P Burg ICP 0700		P Burg ICP 2100
7. Control Operations Mop up within Division as needed. Provide support to other Divisions as necessary. Continue to scout burnout operations west to Division Z break. Work with READ to identify suppression repair areas. Mop up standards are based off your experience and knowledge of fuels, weather and topography to lower the probability of escape to acceptable levels.									
8. Special Instructions Identify and map structures. Work with Liaison Officer to advise and coordinate with potentially affected private landowners. Gather GPS tracks of all constructed line in Division and turn into the Situation Unit. Specific hazard mitigation: <ul style="list-style-type: none"> Use the "Risk Management" process on pages 34 to 36 of the IRPG when engaging in suppression actions. Establish trigger points and reassess as needed. 									
9. Division/Group Communication Summary									
Function	RX Frequency	TX Frequency	Tone	Channel	Function	RX Frequency	TX Frequency	Tone	Channel
Tactical	168.7250	168.7250	123.0	4	Command	166.3375	170.3875	123.0	9
Command	168.1000	170.4500	123.0	7	Command	164.6750	169.8125	123.0	10
Command	169.5375	164.7125	123.0	8	Command	171.0375	163.8250	123.0	11
					Air to Ground				
Prepared by (Resource Unit Leader) <i>Karl Pelome</i>			Approved by (Planning Section Chief) <i>D A Schwecke</i>			Date 9/05/2017		Time 2000	

DIVISION ASSIGNMENT LIST				1. Branch 2		2. Group Z			
3. Incident Name Sapphire Complex				4. Operational Period Date: 09/06/2017 Time: 0700-2000					
5. Operations Personnel									
Operations Chief		Sam Gibbons, Randy McKenzie, Jim Grant			Division/Group Supervisor		Vance Hazelton, Alan Carlson (T)		
Branch Director					Safety Officer		Jim Bartlett, Gary Sexton, J.D. Bauman (T)		
6. Resources Assigned this Period									
Strike Team/Task Force/ Resource Designator		Last Shift	Leader		Number Persons	Trans. Needed	Drop Off PT./Time		Pick Up PT./Time
C-66 HC2IA Grayback Forestry		9/8	Matthew Daugherty		20	N	P Burg ICP 0700		P Burg ICP 2100
E-125 ENG3 Mountain Camel		9/8	Shawn Wippert		3	N	P Burg ICP 0700		P Burg ICP 2100
E-33 ENG4 Dragon Fighters E-41		9/16	Levi Dufford (T)		3	N	P Burg ICP 0700		P Burg ICP 2100
E-30 ENG6 Red Truck Wildfire		9/16	Ray Brown		3	N	P Burg ICP 0700		P Burg ICP 2100
E-122 ENG6 Griz 1		9/8	Kurt Hennifer		3	N	P Burg ICP 0800		P Burg ICP 2400
E-158 ENG6 Metal Works		9/8	Rick Manchester		3	N	P Burg ICP 0700		P Burg ICP 2100
E-234 ENG6 IL-MPF		9/16	Shaun Trabado		4	N	P Burg ICP 0700		P Burg ICP 2100
E-119 UTV Outback Fire 747318							P Burg ICP 0700		P Burg ICP 2100
O-514 EMPF		9/8	Robin Spurlock		1	N	P Burg ICP 0700		P Burg ICP 2100
7. Control Operations Utilize aircraft, engines, and fire personnel to hold fire north and east of Rock Creek Road. Provide protection for structures along Rock Creek Road.									
8. Special Instructions Identify and map structures. Work with READ for specifications when working in and around Forest Service cabins. Gather GPS tracks of all constructed line in Division and turn into the Situation Unit. Specific hazard mitigation: <ul style="list-style-type: none"> • Review the Wildland Urban Interface "watch out" situations on page 12 of the IRPG. • Ensure aerial/ground ignition plans haven adequately developed and personnel have been briefed. 									
9. Division/Group Communication Summary									
Function	RX Frequency	TX Frequency	Tone	Channel	Function	RX Frequency	TX Frequency	Tone	Channel
Tactical	168.2500	168.2500	123.0	6	Command	166.3375	170.3875	123.0	9
Command	168.100	170.4500	123.0	7	Command	164.6750	169.8125	123.0	10
Command	169.5375	164.7125	123.0	8	Air to Ground				
Prepared by (Resource Unit Leader) <i>Karl D. [Signature]</i>			Approved by (Planning Section Chief) <i>DA Schwecke</i>			Date 9/05/2017		Time 2000	

DIVISION ASSIGNMENT LIST	1. Branch 2	2. Group Structure (LTL Hogback)
---------------------------------	-----------------------	--

3. Incident Name Sapphire Complex	4. Operational Period Date: 09/06/2017 Time: 0700-2000
---	---

5. **Operations Personnel**

Operations Chief	Sam Gibbons, Randy McKenzie, Jim Grant	Division/Group Supervisor	Ron Roberts, Waylon Meek (T)
Branch Director		Safety Officer	Jim Bartlett, J.D. Bauman (T)

6. **Resources Assigned this Period**

Resource	Date	Personnel	Count	Availability	ICP	ICP
E-46 ENG3 Hart Ventures 414253	9/11	Wyatt Lawrence	3	N	P Burg ICP 0800	P Burg ICP 2400
E-45 ENG4 Inland Forest Mgmt.	9/11	Terry McGovern	3	N	P Burg ICP 0800	P Burg ICP 2400
E-124 ENG4 Outback Firefighting	9/6	Jim Wheeler	3	N	P Burg ICP 0700	P Burg ICP 2100
E-189 ENG4 National Wildland Fire	9/19	Leenkun Baca	3	N	P Burg ICP 0800	P Burg ICP 2400
E-133 WTS2 Butler Enterprises	9/12	Nick Dole	1	N	P Burg ICP 0700	P Burg ICP 2100
E-234.1 TFLD	9/16	Josh Strohmeyer (T)	1	N	P Burg ICP 0700	P Burg ICP 2100

7. Control Operations
Protect structures in Upper Willow Creek drainage. Maintain structure protection equipment at Upper Willow and Marshall Creek structures. Provide support to adjacent Divisions as needed. Maintain IA readiness, backfill any structure protection needs with Engines from adjacent divisions.

8. Special Instructions
Identify and map structures. Work with Liaison Officer to advise and coordinate with potentially affected private landowners. Gather GPS tracks of all constructed line in Division and turn into the Situation Unit.
Specific hazard mitigations:

- Review the Wildland Urban Interface "watch out" situations on page 12 of the IRPG.
- For IA, establish LCES and determine trigger points.

9. **Division/Group Communication Summary**

Function	RX Frequency	TX Frequency	Tone	Channel	Function	RX Frequency	TX Frequency	Tone	Channel
Tactical	168.2000	168.2000	123.0	2	Command	166.3375	170.3875	123.0	9
Command	168.1000	170.4500	123.0	7	Command	164.6750	169.8125	123.0	10
Command	169.5375	164.7125	123.0	8	Air to Ground				

Prepared by (Resource Unit Leader) <i>Karl DeLuna</i>	Approved by (Planning Section Chief) <i>DA Schwecke</i>	Date 9/05/2017	Time 2000
--	--	-------------------	--------------

DIVISION ASSIGNMENT LIST	1. Branch 2	2. Group Night Shift
---------------------------------	-----------------------	--------------------------------

3. Incident Name Sapphire Complex	4. Operational Period Date: 09/06 - 09/07/2017 Time: 1800-0800
---	--

5. Operations Personnel

Operations Chief	Sam Gibbons, Randy McKenzie, Jim Grant	Division/Group Supervisor	Nate Arellano
Branch Director		Safety Officer	

6. Resources Assigned this Period

Strike Team/Task Force/ Resource Designator	Last Shift	Leader	Number Persons	Trans. Needed	Drop Off PT./Time	Pick Up PT./Time
E-26 ENG4 Fireco	9/18	Tyson Hunt	3	N	P Burg ICP 1800	P Burg ICP 0800
E-43 ENG6 Torch Fire 62	9/11	Bob Miller	3	N	P Burg ICP 1800	P Burg ICP 0800
E-44 ENG6 Torch Fire 63	9/14	Trinity Krivanec	3	N	P Burg ICP 1800	P Burg ICP 0800
O-357 EMTF	9/7	Dan Jiminez	1	N	P Burg ICP 1800	P Burg ICP 0800

7. Control Operations
Provide structure protection as needed along Upper Willow Creek, Marshall Creek subdivisions, and along Rock Creek Rd. Monitor fire spread along Rock Creek Road.

8. Special Instructions
Tie in with swing shift engines.
All resources must receive a briefing from operations before heading to the fireline.
Establish communications with ICP.
Gather GPS tracks of all constructed line in Division and turn into the Situation Unit.
Specific hazard mitigation:

- Review the Wildland Urban Interface "watch out situations" on page 12 of the IRPG.
- Set a reasonable work pace and allow rest breaks.

9. Division/Group Communication Summary

Function	RX Frequency	TX Frequency	Tone	Channel	Function	RX Frequency	TX Frequency	Tone	Channel
Tactical	168.2500	168.2500	123.0	6	Command	166.3375	170.3875	123.0	9
Command	168.1000	170.4500	123.0	7	Command	164.6750	169.8125	123.0	10
Command	169.5375	164.7125	123.0	8	Air to Ground				

Prepared by (Resource Unit Leader) <i>[Signature]</i>	Approved by (Planning Section Chief) <i>[Signature]</i>	Date 9/05/2017	Time 2000
--	--	-------------------	--------------

INCIDENT RADIO COMMUNICATIONS PLAN		1. Incident Name SAPPHIRE COMPLEX		2. Date/ Time Prepared 9/05/2017 2000 PM		3. Operational Period Date/Time 0600 -2000 9/06/2017															
4. Basic Radio Channel Utilization Mode: W=Wideband Analog, N=Narrowband Analog, D=Digital, M=Mixed																					
Channel	Function	Frequency	Tone	Mode	Assignment	Remarks															
1	TAC 1	RX: 168.0500	123.0	N	DIV GOLF	Remember the "C" in LCES!															
		TX: 168.0500	123.0																		
2	TAC 2	RX: 168.2000	123.0	N	STRUCTURE PROTECTION			Have a Sierra,Alfa,Foxtrot,Echo Day!													
		TX: 168.2000	123.0																		
3	TAC 3	RX: 168.6000	123.0	N	DIV OSCAR					Use the REPEATER that works best for YOU!											
		TX: 168.6000	123.0																		
4	TAC 4	RX: 168.7250	123.0	N	DIV PAPA							Lolo Forest Repeater Net to Missoula Dispatch IA Communicate with Air Attack Helicopter Operations									
		TX: 168.7250	123.0																		
5	TAC 5	RX: 166.7750	123.0	N	DIV NOVEMBER									FOR EMERGENCY GROUND TO AIR INITIAL CONTACT							
		TX: 166.7750	123.0																		
6	TAC 6	RX: 168.2500	123.0	N	DIV ZULU/NIGHT SHIFT																
		TX: 168.2500	123.0																		
7	CMD 7	RX: 168.1000	123.0	N	ALL DIVS																
		TX: 170.4500	123.0																		
8	CMD 8	RX: 169.5375	123.0	N	ALL DIVS																
		TX: 164.7125	123.0																		
9	CMD 9	RX: 166.3375	123.0	N	ALL DIVS																
		TX: 170.3875	123.0																		
10	CMD 10	RX: 164.6750	123.0	N	ALL DIVS																
		TX: 169.8125	123.0																		
11	CMD 11	RX: 171.0375	123.0	N	ALL DIVS																
		TX: 163.8250	123.0																		
12	TAN	RX: 155.3400	156.7	N	LIFE FLIGHT VMED 28																
		TX: 155.3400	156.7																		
13	QUIGG RPT	RX: 164.7000	131.8	N	IA																
		TX: 164.1000	131.8																		
14	A/G PRIMARY	RX: 169.1500		N	AIR ATTACK																
		TX: 169.1500																			
15	A/G SECONDARY	RX: 169.0875		N	HELICOPTER OPS																
		TX: 169.0875																			
16	AIR GUARD	RX: 168.6250	110.9	N	ALL																
		TX: 168.6250	110.9																		

5. Prepared by (Communications Unit)
Jeannie Nez Perce

Jeannie Nez Perce, COML

205 IA RADIO COMMUNICATIONS PLAN		1. Incident Name SAPPHIRE COMPLEX		2. Date/ Time Prepared 9/05/2017 20:00 PM		3. Operational Period Date/Time 9/06/2017 0600 - 2000		
Radio Type		CH	Function	Frequency	Tone	Mode	Assignment	Remarks
KING		1	FOREST TAC 1	RX: 167.1125		N	LOLO TAC	
NIFC				TX: 167.1125	110.9			
KING		2	FOREST TAC 2	RX: 167.6250		N	LOLO TAC	
NIFC				TX: 167.6250	131.8			
KING		3	TAN	RX: 155.3400		N	LIFE FLIGHT	
NIFC				TX: 155.3400	156.7		VMED 28	
KING		4	WHITE	RX: 155.2800		N	GROUND	
NIFC				TX: 155.2800	156.7		AMBULANCE	
KING		5	RED	RX: 154.0700		N	STATE FIRE	Fire Mutual Aid
NIFC				TX: 154.0700	156.7			
KING		6	WEATHER	RX: 162.4000		N	WEATHER	
NIFC				TX: 162.4000				
KING		7	CMD 7	RX: 168.1000		N	ALL DIVS	
NIFC				TX: 170.4500	123.0			
KING		8	CMD 8	RX: 169.5375		N	ALL DIVS	
NIFC				TX: 164.7125	123.0			
KING		9	CMD 9	RX: 166.3375		N	ALL DIVS	
NIFC				TX: 170.3875	123.0			
KING		10	CMD 10	RX: 164.6750		N	ALL DIVS	
NIFC				TX: 169.8125	123.0			
KING		11	QUIGG RPT	RX: 164.7000		N	IA	Lolo Forest Repeater to Missoula Dispatch
NIFC				TX: 164.1000	131.8			IA
KING		12	EAST DIR	RX: 164.7000		N	IA	Lolo Forest Direct Net to Missoula Dispatch
NIFC				TX: 164.7000	123.0			IA
KING		13	EAST A/G	RX: 166.5000		N	IA	Lolo Forest A/G
NIFC				TX: 166.5000				
KING		14	BITTERROOT A/G	RX: 168.3875		N	IA	Bitterroot Forest A/G
NIFC				TX: 168.3875				
KING		15	MT DNRC A/G	RX: 166.9000		N	IA	Montana DNRC A/G
NIFC				TX: 166.9000				
KING		16	AIRGUARD	RX: 168.6250		N	All	FOR EMERGENCY GROUND TO AIR
NIFC				TX: 168.6250	110.9			INITIAL CONTACT

5. Prepared by (Communications Unit) **Jeanne Nez Percé** COML NOTE: To use tones to control receiver interference noise turn squelch knob all the way counter clockwise.
 Controlled Unclassified Information//Basic

MEDICAL PLAN (ICS 206 WF)

Incident/Project Name		1. Operational Period					
Sapphire Complex		Date/Time 9/6/17 DAY/NIGHT SHIFT					
2. Ambulance Services							
Name	Complete Address	Phone & EMS Frequency		Advanced Life Support (ALS) Yes No			
Three Rivers Ambulance	Assigned to incident	Command		X			
Missoula Emergency Services Northern part of fire	1200 Burlington Ave., Missoula, MT	911		X			
Phillipsburg Ambulance Southern part of the fire	310 Sansome St., Phillipsburg, MT	406-859-3251				X	
Drummond Ambulance Middle part of fire	147 Frontage Rd., Drummond, MT	406-859-3251				X	
3. Air Ambulance Services							
Name	Phone	Type of Aircraft & Capability					
Life Flight Network (Missoula or Butte)	911 or 406-829-7070	ALS with Night vision, A/G Freq Tan (18 mins from Missoula to Phillipsburg)					
Two Bear Air Rescue (Kalispell)	911 or 406-829-7070	Night Vision, 400 lbs hoist, extraction only, Freq Tan (60 mins from Kalispell to Phillipsburg)					
4. Hospitals							
Name Complete Address	GPS Datum – WGS 84 Coordinate Standard Degrees Decimal Minutes DD° MM.MMM' N - Lat DD° MM.MMM' W - Long	Travel Time Air Gnd		Phone	Helipad Yes No		Level of Care Facility
Granite County Medical Center 310 Sansome St. Phillipsburg, MT	Lat: N 32 49.373	N/A	5 mins from ICP	406-859-3271	X		Critical Access Hospital
	Long: W 109 44.117						
	VHF: White 155.280						
St. Patrick's Hospital 500 W. Broadway Missoula, MT	Lat: N 46 52.524	45 min from ICP	90 min from ICP	406-543-7271	X		Level 2 Trauma Center (Highest Trauma Care Facility in Area)
	Long: W 113 59.969						
	VHF: White 155.280						
Community Medical Center 2827 Ft. Missoula Rd. Missoula, MT	Lat: N 46 50.909	45 min from ICP	90 min from ICP	406-728-4100	X		Community Trauma Hospital
	Long: W 114 2.865						
	VHF: White 155.280						
Community Hospital of Anaconda 401 W Pennsylvania Anaconda, MT	Lat: N 46 07.969	20 min from ICP	1 hrs from ICP	406-563-8585	X		Community Trauma Hospital
	Long: W 112 57.456						
	VHF: White 155.280						
5. Division Branch Group		Area Location Capability					
DIV G (GOAT)		Point of Contact:					
		EMS Responders & Capability:		Brian Williamson-- EMTF			
		Equipment Available on Scene:		BLS Trauma kit, O2, SKED, Epi, Sager Splint			
		Medical Emergency Channel:		Command			
		ETA for Ambulance to Scene:		1 hr from Missoula			
		Air: From Helibase		15 min			
		Approved Helispot:		H-4			
		Lat:		N 46 40.553			
Long:		W 113 35.817					

MEDICAL PLAN (ICS 206 WF)

DIV G (SLIDEROCK)	Point of Contact:				
	EMS Responders & Capability:	UNSTAFFED			
	Equipment Available on Scene:				
	Medical Emergency Channel:	Command			
	ETA for Ambulance to Scene:	2.5 hrs from Drummond or Phillipsburg			
	Air: From Helibase	15 min			
	Approved Helispot:	H-12			
	Lat:	N 46 36.312			
	Long:	W 113 32.327			
DIV N	Point of Contact:				
	EMS Responders & Capability:	Rex Nielsen - EMPF			
	Equipment Available on Scene:	ALS Trauma kit and ALS meds, O2, SKED, AED, KED,			
	Medical Emergency Channel:	Command			
	ETA for Ambulance to Scene:	1 hr from DP-49 Three Rivers Ambulance			
	Air: From Helibase	15 min			
	Approved Helispot:	H-14	H-15	H-16	Miner Mud
	Lat:	N 46 31.110	N 46 29.219	N 46 26.120	N 46 24.102
	Long:	W 113 30.650	W 113 30.981	W 113 30.920	W 113 30.278
DIV O	Point of Contact:				
	EMS Responders & Capability:	Terry Williamson - AEMF			
	Equipment Available on Scene:	Trauma kit, O2, SKED			
	Medical Emergency Channel:	Command			
	ETA for Ambulance to Scene:	30 min from DP-49 Three Rivers Ambulance			
	Air: From Helibase	15 min			
	Approved Helispot:	H-17	H-18		
	Lat:	N 46 22.493	N 46 21.493		
	Long:	W 113 31.790	W 113 32.538		
DIV P	Point of Contact:				
	EMS Responders & Capability:	Three Rivers Ambulance (ALS/Paramedics)			
	Equipment Available on Scene:	BLS/ALS Trauma gear, O2, AED			
	Medical Emergency Channel:	Command			
	ETA for Ambulance to Scene:	30 min from DP-49 Three Rivers Ambulance			
	Air: From Helibase	15 min			
	Approved Helispot:	H-18	H-19		
	Lat:	N 46 21.493	N 46 21.547		
	Long:	W 113 32.538	W 113 33.252		
DIV Z	Point of Contact:				
	EMS Responders & Capability:	Robin Spurlock - EMPF			
	Equipment Available on Scene:	ALS Kit w/Meds, O2, SKED, AED			
	Medical Emergency Channel:	Command			
	ETA for Ambulance to Scene:	30 min from ICP to DP-49 Three Rivers Ambulance			
	Air: From Helibase	15 min			
	Approved Helispot:	H-21			
	Lat:	N 46 24.623			
	Long:	W 113 42.064			
NIGHT SHIFT	Point of Contact:				
	EMS Responders & Capability:	Dan Jimenez – EMTF			
	Equipment Available on Scene:	Trauma kit, Backboard, O2, Epi			
	Medical Emergency Channel:	Command			
	ETA for Ambulance to Scene:	30 min from ICP to DP-49 Three Rivers Ambulance			
	Air: From Missoula	15 min			
	Approved Helispot:	H-21			
	Lat:	N 46 24.623			
	Long:	W 113 42.064			

MEDICAL PLAN (ICS 206 WF)

PHILIPSBURG ICP	Point of Contact:		
	EMS Responders & Capability:	P. Miller MEDL & D. Poxleitner MEDL (t) & S. Maxwell IMST	
	Equipment Available on Scene:	ALS Kit, Meds, Trauma kit, Epi, Albuterol, Nitro, AED	
	Medical Emergency Channel:	Command	
	ETA for Ambulance to Scene:	10 minutes	
	Air: From Missoula	45 minutes from Missoula	
	Approved Helispot:		
	Lat:		
Long:			
<p>Upon occurrence of a "Major Medical" or accident involving significant injury on the fire line, the closest DIVS should respond directly to the scene to take control of the situation and direct necessary actions. If the DIVS is unavailable, the nearest fire line supervisor or leader needs to take charge.</p> <p>1. Clear all radio traffic on the Incident Command Channel--use to coordinate response with the MEDICAL UNIT LEADER via Communications. DO NOT USE NAMES. Identify: a) The on-scene Point Of Contact (i.e. TFLD Smith); b) Describe the nature of the accident.</p> <p>2. Obtain and facilitate nearest EMT to the scene. Identify to Communications medical personnel on site.</p> <p>3. IDENTIFY nature of the problem, # of patients, status, vitals & location. (GPS if possible) Request additional resources if needed.</p> <p>4. Coordinate and facilitate appropriate transportation for injured personnel with Medical Unit EMT in charge of patient(s).</p> <p>5. Remove all unnecessary personnel from the scene.</p> <p>6. Secure scene, identify witnesses for later investigation. Document all information received and transmitted on the radio or phone.</p> <p>7. Inform Communications of <u>any</u> changes in the on scene Point Of Contact or medical personnel as they occur.</p> <p style="text-align: center;">LIFE SAFETY IS THE NUMBER 1 PRIORITY ON THIS INCIDENT!</p>			
6. Prepared By (Medical Unit Leader)	7. Date/Time	8. Reviewed By (Safety Officer)	9. Date/Time
Dave Poxleitner, MEDL (t) <i>David P. Poxleitner</i>	9/5/17 1900	Jim Bartlett SOF2 or Brandon Skinner SOF (t) <i>Jim Bartlett</i>	9/5/17 1900

AIR OPERATIONS SUMMARY		Prepared By: Hugh Carson		Prepared Date/Time: 9/4/2017 1900	
1. INCIDENT NAME:		2. OPERATIONAL PERIOD DATE:		START TIME:	END TIME:
Sapphire Complex & Meyers		9/6/2017		600	2200
3. REMARKS (Safety Notes, Hazards): ** Shared ATGS and helicopter resources between Meyers and Sapphire. If conflicting needs, the two Team Planning Ops will resolve and inform their respective AOBs of priorities among incidents. Secondary A/A used as assigned by Air Attack. Secondary A/G used as needed. HOTSY BUCKET WASHOUT: (1) Beaverhead-Deerfodge (Meyers and Sapphire): When conducting bucket/snorkel work with Helicopters, ensure that only one water source is used at a time. If utilizing multiple water sources, ensure buckets/snorkels are washed between the use of different sources. (2) LOLO PART OF SAPPHIRE: Required when switching from one drainage to another (3) No wash required when switching dips while on the Bitterroot (4) Bucket wash when switching between Lolo or B-D and Bitterroot. (5) NEVER DIP FROM CLARK FORK.		4. READY ALERT AIRCRAFT / Incident Medevac Resources: 7HE AS350B3 (litter-capable) 407MC Bell 407 (backboard only) Litter Kit at Meyers HB SHORTHAUL Order via A/C Desk. ** 401HQ @ Lincoln, MT 73BH @ Plains *** Hoist/NVG: Two Bear Air Civilian A/C Medical (Tan): 155.3400N Tone TX 156.7 A/G Hospital (White): 155.2800		SUNRISE:	SUNSET:
		5. Airspace Information:		0701 Helibase	2000 Helibase
6. PERSONNEL		PHONE #		7. FREQUENCIES	
6a. Sapphire Complex				VHF-AM	
Air Ops Branch Director Sapphire	Hugh Carson	970-778-7078			VHF-FM
Air Ops Branch Director (Recertification)	Vince Welbaum	720-537-4972	7a. Sapphire Freqs		
Air Support Group Supv Sapphire	Carl Richie	208-446-4376	Sapphire A/G PRIMARY A/G 1		169.1500N
Air Tactical Group Supv	AS Needed		Sapphire A/G SECOND A/G 2		169.08750N
Sapphire Air Ops Yurt Phone	AOBD/ASGS	406-859-9041	Sapphire A/A FW		118.2250
			Sapphire A/A RW		123.4000
6b. Meyers Complex					
Air Ops Branch Director Meyers	Bill Sprauer	406-859-3117	7b. Meyers Freqs		
Air Support Group Supv Meyers	Vince Welbaum	720-537-4972	Meyers A/G PRIMARY (A/G 1)		169.2000
Air Tactical Group Supv	AS Needed		Meyers A/G SECOND (A/G 2)		164.7500
Meyers Air Ops Yurt Phone	AOBD/ASGS	406-859-9129	Meyers A/A FW		121.0750
			Meyers A/A RW		126.6250
6c. Common Ops Contacts				Command - Helibase to ATGS	
Helibase Manager - Meyers HB	Lee Stewart	406-859-9133	7c. Common Freqs		168.075 Rx - 170.425 Tx 114.8
Helibase Manager (T) - Meyers HB	Tim Lanterman	720-537-4950	Deck		163.1000
Deck Coordinator	Billy Trefon	907-294-4121	Takeoff/Landing (TOLC)		
Meyers Helibase Trailer Phone			National Fit Follow		172.6500N
Mixmaster Miner Mud	Marty Posey	406-859-9133	Air Guard		168.6500 Tx/Rx 110.9
Missoula (Lolo NF)	A/C Desk	575-746-7320	DNRC A/G (Yellow)		166.9000N or 151.2200 Rx/Tx
Dillon (B-D NF)	A/C Desk	406-829-7060			
		406-683-3975/3827			

Signature: 

8. AERIAL SUPERVISION										7d. Initial Attack Freqs	
FAA #	REQ #	TY	MAKE/MODEL	BASE	START	AVAIL	REMARKS				
NOTE: Air Tactical and Platforms TBD on Case By Case Need										Beaverhead Direct	
NOTE: Air Tactical and Platforms TBD on Case By Case Need										Deerlodge Direct	
9. HELICOPTERS										B-D IA Air/Air	
FAA N#	REQ #	TY	MAKE/ MODEL	BASE	BRIEF	AVAIL	REMARKS				
116	A-7	1	KMax	Meyers	800	830	Restricted; Quick Fill			171.425 RX/TX TT 131.8	
17HX	A-67	2	Bell 205++	Meyers	800	830	Standard			171.000 RX/TX TT 141.3	
111DR	A-87	2	B-205	Meyers	800	830	Restricted; Check Avail			132.7000	
7HE	A-14	3	AS-350B3	H-31	800	830	Standard; litter-capable			166.9000 N	
407MC	A-69	3	Bell 407	Meyers	800	830	Standard; backboard only			168.3875 N	
352TA	A-37	3	AS-350B3	Meyers	800	830	Standard			168.4875 N	
NOTE: <i>Italicized Aircraft/Req #s above are on Meyers Order; Others are Sapphire;</i>										Lolo East Direct	
										Lolo East A/G	
										Lolo West Direct	
										Lolo West A/G (A/G 05)	
										Bitterroot Forest A/G	
										Bitterroot A/A	
										Bitterroot Dispatch Ch 1	
										Bitterroot Dispatch Ch 2	
										Rx 168.750 Tx 168.750 Tn 131.8	
										Rx 169.625 Tx 169.625 Tn 146.2	
										Rx 168.3875 Tx 168.3875	
										125.175	
10. MISSIONS - MEYERS										TIME	To
Bucket drops as requested										TBD	Meyers Helibase
Recon as requested										TBD	Meyers Helibase
Aerial Ignition possible										TBD	Meyers Helibase
										TBD	Meyers Helibase
10. MISSIONS - SAPPHIRE										TIME	To
Bucket Support as requested in DIVS Z to hold/check firing operation										TBD	Meyers Helibase
ATGS to monitor Slidestock and support Sapphire as requested										TBD	Meyers Helibase
Recon as requested										TBD	Meyers Helibase
Aerial Ignition as requested										TBD	Meyers Helibase

Signature: 



What is Mutual Respect

Incident personnel have the right to work in a harassment-free environment where they are treated with dignity and respect.

They also have the responsibility to conduct themselves in such a manner as to contribute to a harassment-free work environment.

This means treating others with dignity and respect. These two factors define "mutual respect."

Dale Tribby - Human Resource Specialist
Kris Cahoon - Human Resource Specialist-t

09/06/2017

TENTATIVE RELEASE

SLIDEROCK US-MT-LNF-001239

EQUIPMENT

E-125	0715	(ENG3)	MOUNTAIN CAMEL
-------	------	--------	----------------

09/06/2017

TENTATIVE RELEASE

SAPPHIRE COMPLEX US-MT-LNF-001463

EQUIPMENT

E-126	0700	(WTS2)	HIGH SIERRA ENTERPRISE
E-137	0700	(WTS2)	TAYLOR SERVICES INC

OVERHEAD

O-225	0700	(EQTR)	CONTLA, TRACI L
O-339	0700	(SEC2)	DULL, BRENT B
O-332	0730	(TFLD)	HANDEL, JEFFREY
O-340	0730	(SEC2)	NORLANDER, ADAM J
O-361	0745	(REAF)	JEROME, TERRY WADE
O-371	1800	(INCM)	MARTINEZ, MERCEDES
O-441	2000	(IMST)	MAXWELL, SHANNON M

09/07/2017

TENTATIVE RELEASE

SAPPHIRE COMPLEX US-MT-LNF-001463

EQUIPMENT

E-27 0700 (ENG4) WEBER FIRE DISTRICT E-27

OVERHEAD

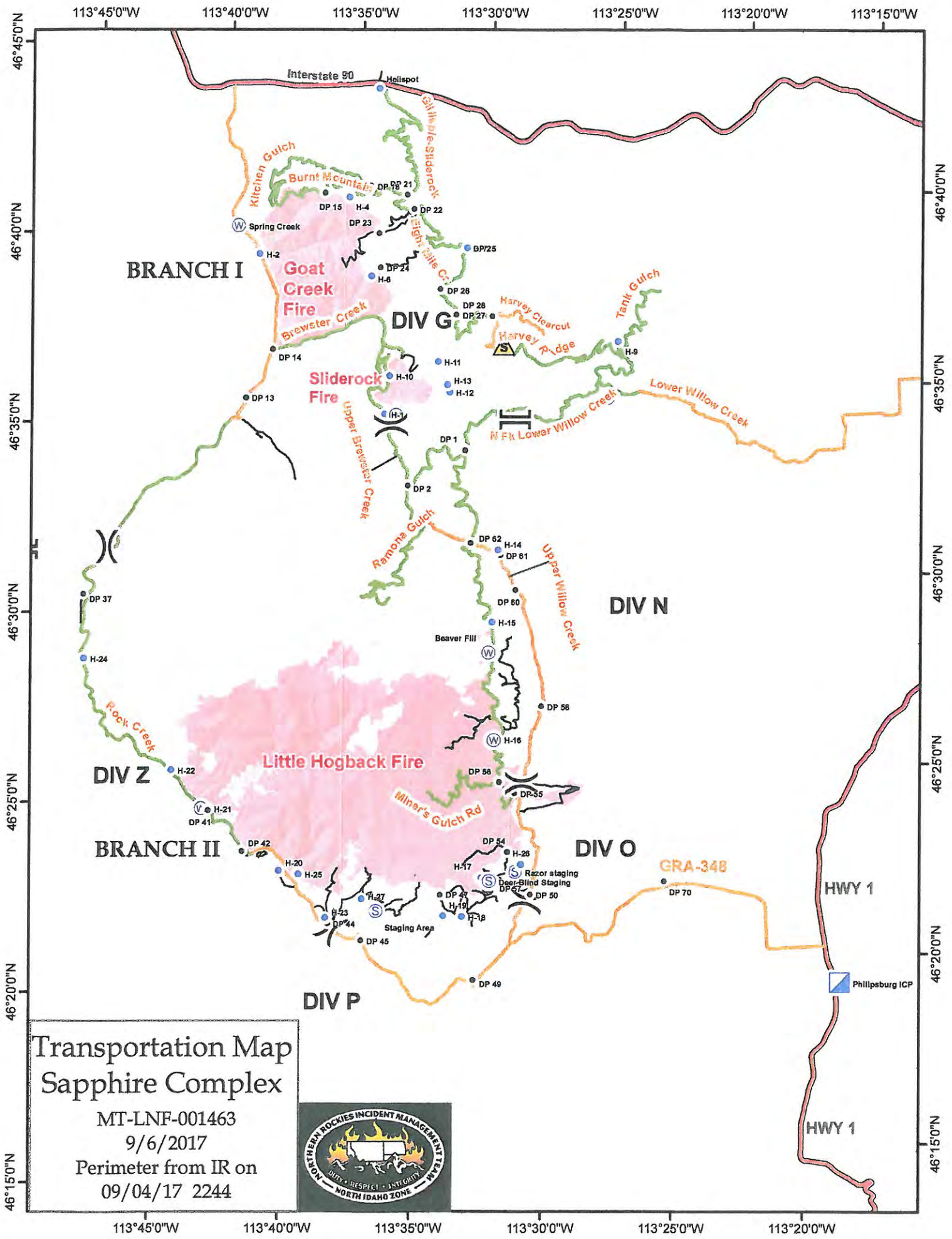
O-367	0700	(SPUL)	BLONDEAU, LINDA MARIE
O-416	0700	(ORDM)	HILLSTROM, SUSAN MAXINE
O-262	0700	(EQTR)	MINTER, KRISTINA J
O-341	0715	(SEC2)	HOLLINGSWORTH, DESIREE L
O-347	0715	(HEQB)	LEMIEUX, KEVIN JAMES
O-316	1900	(IMET)	HOOPER, KELLY BASIL
O-383	1900	(FDUL)	KUHLBERG, SALLY
O-244	1900	(TFLD)	WHITE, DANIEL GARY
O-441	2000	(IMST)	MAXWELL, SHANNON M

Sapphire Complex: ICP Phone List

Mike Almas North Idaho IMT2

As of 8/28/2017 2000

Communications	406-859-9051
Incident Commander	406-859-9043
Human Resources	406-859-9177
PIO-private	406-859-9172
PIO-private	406-859-9170
PIO-public	406-540-3589
Operations/Safety	406-859-9041
Operations/Safety	406-859-9042
Plans	406-859-9049
Situation Unit	406-859-9044
Check-in/Demob	406-859-9048 FAX-9047
Finance	406-859-9045
Logistics	406-859-9180
Ordering	406-859-9171 FAX-9174
Supply	406-859-9175
Medical	406-859-9052
Ground Support	406-859-9053

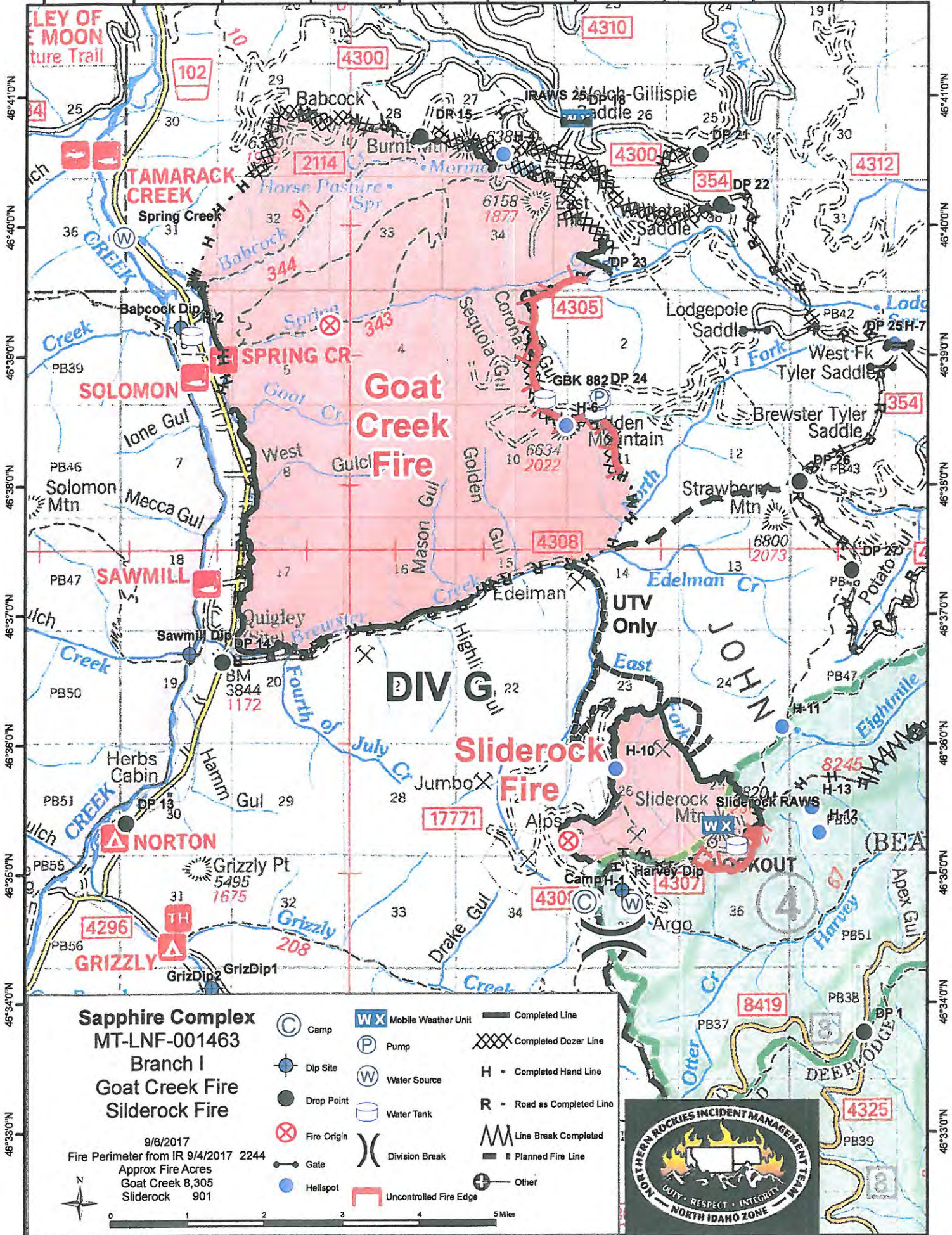


Transportation Map Sapphire Complex

MT-LNF-001463
 9/6/2017
 Perimeter from IR on
 09/04/17 2244



113°41'0"W 113°40'0"W 113°39'0"W 113°38'0"W 113°37'0"W 113°36'0"W 113°35'0"W 113°34'0"W 113°33'0"W 113°32'0"W



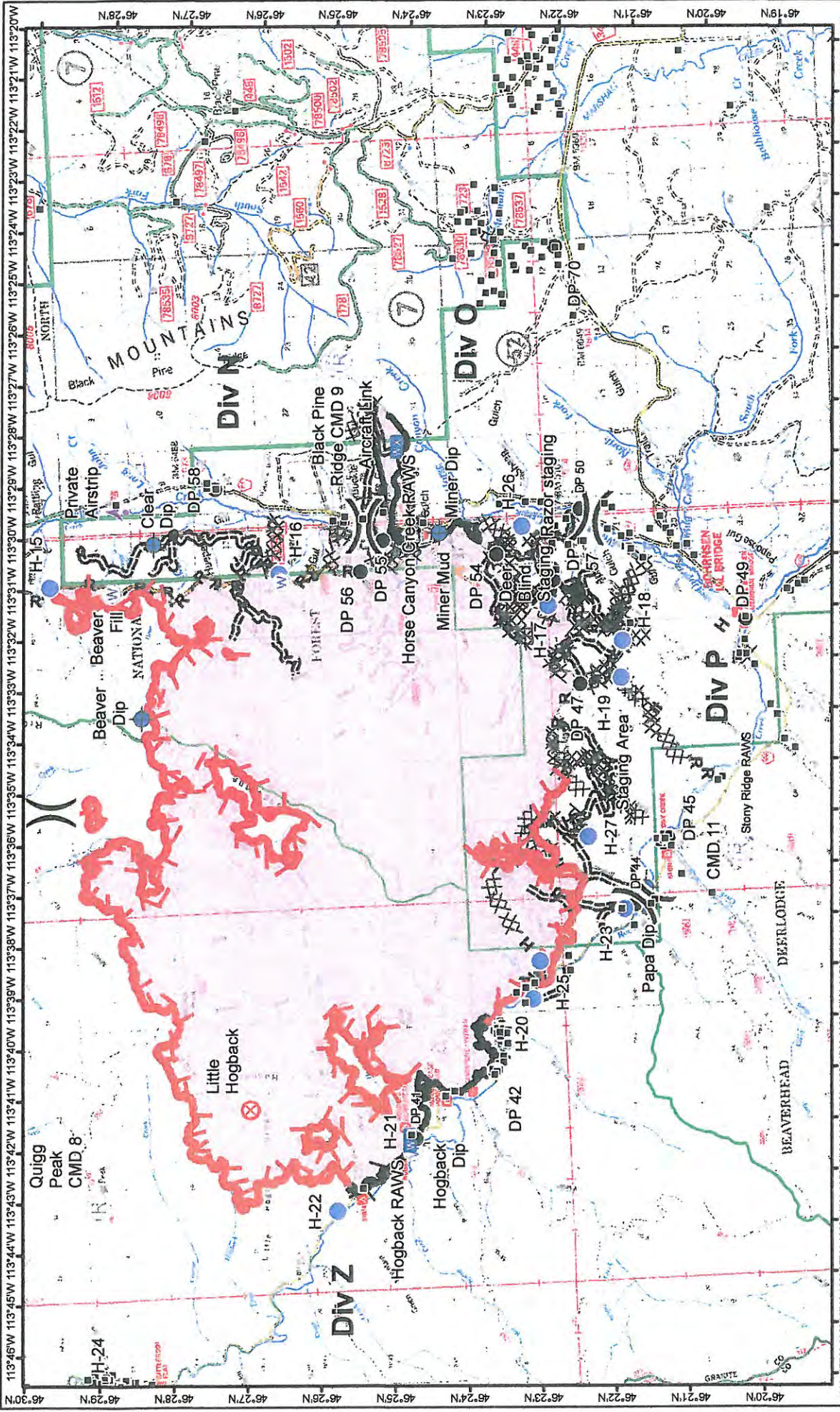
Sapphire Complex
MT-LNF-001463
Branch I
Goat Creek Fire
Sliderock Fire

9/8/2017
Fire Perimeter from IR 9/4/2017 2244
Approx Fire Acres
Goat Creek 8,305
Sliderock 901

- Camp
- Dip Site
- Drop Point
- Fire Origin
- Gate
- Helispot
- Mobile Weather Unit
- Pump
- Water Source
- Water Tank
- Division Break
- Uncontrolled Fire Edge
- Completed Line
- Completed Dozer Line
- Completed Hand Line
- Road as Completed Line
- Line Break Completed
- Planned Fire Line
- Other



113°41'0"W 113°40'0"W 113°39'0"W 113°38'0"W 113°37'0"W 113°36'0"W 113°35'0"W 113°34'0"W 113°33'0"W 113°32'0"W



Branch II Little Hogback Fire

Incident Action Plan Map
Sapphire Complex
 MT-LNF-001463
 09/06/2017
 Fire perimeter as of
 09/04/2017 2244
 34,219 ac. approx.

Legend:

- Structure
- Division Break
- Aerial Hazard
- Dip Site
- Drop Point
- Fire Origin
- Helispot
- Mobile Weather Unit
- Repeater
- Retardant/Mud Pit
- Water Source
- Completed Line
- Uncontrolled Fire Edge
- Completed Dozer Line
- H - H Completed Hand Line
- R - R Road as Completed Line
- Line Break Completed
- Completed Burnout

0 0.5 1 2 3 4 Miles

INCIDENT WITHIN AN INCIDENT PLAN (IWIP)

The primary goal of this **Incident within an Incident Plan** is to provide “YOU”, the incident personnel guidelines necessary to *locate, triage, extricate, treat, and transport* all accident patients in as quick a manner as possible.

“YOU” or the closest operationally qualified resource (DIVS, SOFR, TFLD, ENGB, CRWB, etc.) will initially oversee the emergency and activation of the **IWIP** as the Incident Commander. Accidents or “Incidents Within an Incident” happen rapidly and require good, calm initial assessments and decisions to handle the situation.

Radio communication will be on the Command frequency and will take priority over other radio traffic. **Names and crew designators of injured or deceased individuals will not be given over the radio.** Deceased individuals and their equipment are not to be moved, except to accomplish rescue work or to protect the health and safety of others.

Standards for Initial Response to IWI on the Fire

“YOU” or closest operationally qualified resource will become IC of the IWI (DIVS, SOFR, TFLD, ENGB, CRWB, etc.) until more qualified help arrives. Proper assessment and communicating the emergency is critical to getting the right resources heading to your location from the start!

- Notify your direct line supervisor or DIVS, and EMT’s to request medical assistance.
- Contact communications and oversee medical emergency response
 - Use the Medical Incident Report (9-Line) found in the Med Plan (ICS-206 WF) or in the 2014 IRPG (page 108-109) to provide information to communications.
- Transfer command to higher level qualification as needed.
 - If transfer of command occurs announce clearly to communications and all resources.

At no time during the incident/fatality or evacuation process will the name of the victim(s), tail number, engine number, or crew name be transmitted.

Green:	Minor, non-life threatening.
Yellow:	Potentially life threatening needs transport.
Red:	Life threatening.

Medical Incident Report

FOR ALL MEDICAL EMERGENCIES: IDENTIFY ON SCENE INCIDENT COMMANDER BY NAME AND POSITION AND ANNOUNCE "MEDICAL EMERGENCY" TO INITIATE RESPONSE FROM IMT COMMUNICATIONS/DISPATCH.

Use items one through nine to communicate situation to communications/dispatch.

1. CONTACT COMMUNICATIONS/DISPATCH

Ex: "Communications, Div. Alpha. Stand-by for Priority Medical Incident Report." (If life threatening request designated frequency be cleared for emergency traffic.)

2. INCIDENT STATUS: Provide incident summary and command structure.

Nature of Injury/Illness		<i>Describe the injury (Ex: Broken leg with bleeding)</i>
Incident Name		<i>Geographic Name + "Medical" (Ex: Trout Meadow Medical)</i>
Incident Commander		<i>Name of IC</i>
Patient Care		<i>Name of Care Provider (Ex: EMT Smith)</i>

3. INITIAL PATIENT ASSESSMENT: Complete this section for each patient. This is only a brief, initial assessment. Provide additional patient info after completing this 9 Line Report.

Number of Patients:	Male / Female	Age:	Weight:
Conscious? <input type="checkbox"/> YES <input type="checkbox"/> NO = MEDEVAC!			
Breathing? <input type="checkbox"/> YES <input type="checkbox"/> NO = MEDEVAC!			
Mechanism of Injury: <i>What caused the injury?</i>			
Lat/Long (Datum WGS84) <i>Ex: N 40° 42.45' x W 123° 03.24'</i>			

4. SEVERITY OF EMERGENCY, TRANSPORT PRIORITY

SEVERITY	TRANSPORT PRIORITY
<input type="checkbox"/> URGENT-RED Life threatening injury or illness. <i>Ex: Unconscious, difficulty breathing, bleeding severely, 2° - 3° burns more than 4 palm sizes, heat stroke, disoriented.</i>	Ambulance or MEDEVAC helicopter. Evacuation need is IMMEDIATE.
<input type="checkbox"/> PRIORITY-YELLOW Serious Injury or illness. <i>Ex: Significant trauma, not able to walk, 2° - 3° burns not more than 1-2 palm sizes.</i>	Ambulance or consider air transport if at remote location. Evacuation may be DELAYED.
<input type="checkbox"/> ROUTINE-GREEN Not a life threatening injury or illness. <i>Ex: Sprains, strains, minor heat-related illness.</i>	Non-Emergency. Evacuation considered Routine of Convenience.

5. TRANSPORT PLAN:

Air Transport: (Agency Aircraft Preferred)

<input type="checkbox"/> Helispot	<input type="checkbox"/> Short-haul/Hoist	<input type="checkbox"/> Life Flight	<input type="checkbox"/> Other
-----------------------------------	---	--------------------------------------	--------------------------------

Ground Transport:

<input type="checkbox"/> Self-Extract	<input type="checkbox"/> Carry-Out	<input type="checkbox"/> Ambulance	<input type="checkbox"/> Other
---------------------------------------	------------------------------------	------------------------------------	--------------------------------

6. ADDITIONAL RESOURCE/EQUIPMENT NEEDS:

<input type="checkbox"/> Paramedic/EMT(s)	<input type="checkbox"/> Crew(s)	<input type="checkbox"/> SKED/Backboard/C-Collar
<input type="checkbox"/> Burn Sheet(s)	<input type="checkbox"/> Oxygen	<input type="checkbox"/> Trauma Bag
<input type="checkbox"/> Medication(s)	<input type="checkbox"/> IV/Fluid(s)	<input type="checkbox"/> Cardiac Monitor/AED
<input type="checkbox"/> Other (i.e. splints, rope rescue, wheeled litter)		

7. COMMUNICATIONS:

Function	Channel Name/Number	Receive (Rx)	Tone/NAC *	Transmit (Tx)	Tone/NAC *
<i>Ex: Command</i>	<i>Forest Rpt, Ch. 2</i>	<i>168.3250</i>	<i>110.9</i>	<i>171.4325</i>	<i>110.9</i>
COMMAND					
AIR-TO-GRND					
TACTICAL					

*(NAC for digital radio system)

8. EVACUATION LOCATION:

Lat/Long (Datum WGS84) <i>EX: N 40 42.45' x W 123 03.24'</i>	
Patient's ETA to Evacuation Location:	
Helispot/Extraction Size and Hazards:	

9. CONTINGENCY:

Considerations: If primary options fail, what actions can be implemented in conjunction with primary evacuation method? Be thinking ahead...

REMEMBER: Confirm ETA's of resources ordered
Act according to your level of training
Be Alert. Keep Calm. Think Clearly. Act Decisively.