



THURSDAY, AUGUST 31, 2017

SUNRISE & BURDETTE

Incident Action Plan

MT-LNF-001336

P1K51R (O116)



Operational Periods:

0600-2000 DAY

Schedule

0600 Day Operations Briefing

1200 C&G Meeting

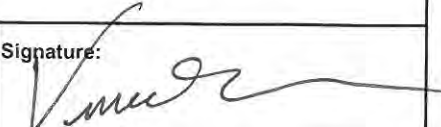
1900 Planning Meeting

GPS Format NAD83 Degrees Decimal Minutes

INCIDENT OBJECTIVES (ICS 202)

1. Incident Name:		2. Operational Period: DAY	
SUNRISE		Date/Time From: 08/31/2017 0600	Date/Time To: 08/31/2017 2000
		THU	THU
3. Objective(s):			
<p>Sunrise fire: Utilize a contain/confinement strategy with a protection emphasis that focuses on keeping the fire south of Trout Creek, north of Quartz creek and off private lands on the east flank (I-90 corridor).</p> <p>Burdette fire: Utilize a full perimeter containment strategy while containing the fire within the Burdette Inventoried Roadless Area (IRA).</p> <p>These containment strategies are based on protecting the following "values at risk":</p> <ul style="list-style-type: none"> • Homes, outbuildings, other structures and mines • Timber production lands • The I-90 travel corridor • The power lines • Bark pant • Railroad • Communication sites • Bull trout habitat • Forest Service Campgrounds • Effects of smoke in the I-90 corridor and in the Missoula metropolitan area <p>To meet these Objectives, this Team will:</p> <ul style="list-style-type: none"> • Use The Risk Management Process, the principles of the 10 Standard Firefighting Orders, LCES and the 18 Watch-Out Situations to provide for firefighter and public safety. • Will tactically engage the fire when exposure risks have been mitigated and communicated, and when the probability of success in meeting these objectives is highest. • Continually reassess the validity of our strategies and tactics in accomplishing the objectives. • Continue developing long-range strategies for managing the fires in concert with cooperators and stakeholders. • Provide timely and accurate information regarding fire related activities to firefighters, the public, cooperators, elected officials and stakeholders. • Use efficient business practices to manage the cost of these fires in relation to the values at risk. • Coordinate all suppression and suppression damage repair actions with Resource Advisor staff prior to and during implementation. • Provide timely initial attack support to the forest and local agencies as requested. • Provide training opportunities for local, regional and national priority trainees. 			
4. Operational Period Command Emphasis:			
We expect all of us to:			
<ul style="list-style-type: none"> • Provide good service to incident staff, state and local government agencies and the public. • Maintain situational awareness and communicate hazards and mitigations within our work area. • Ask questions, listen to answers and seek clarification. • Ensure our interactions with each other and the public are respectful and professional. 			
General Situational Awareness:			
Utilize checklists in the IRPG to identify and mitigate hazards. Communicate mitigations - ask clarifying questions and provide illuminating answers.			
5. Site Safety Plan Required? Yes <input type="checkbox"/> No <input checked="" type="checkbox"/>			
Approved Site Safety Plan(s) Located at:			
6. Incident Action Plan (the items checked below are included in this Incident Action Plan):			
<input checked="" type="checkbox"/> ICS 202	<input type="checkbox"/> ICS 207	Other Attachments:	
<input checked="" type="checkbox"/> ICS 203	<input type="checkbox"/> ICS 208	<input checked="" type="checkbox"/> ICS 220	
<input checked="" type="checkbox"/> ICS 204	<input checked="" type="checkbox"/> ICS 220	<input checked="" type="checkbox"/> SAFETY MESSAGE	
<input checked="" type="checkbox"/> ICS 205	<input checked="" type="checkbox"/> Map/Chart	<input checked="" type="checkbox"/> DMOB LIST	
<input type="checkbox"/> ICS 205A	<input checked="" type="checkbox"/> Weather Forecast/Tides/Currents	<input type="checkbox"/> _____	
<input checked="" type="checkbox"/> ICS 206			
7. Prepared by: BRIAN ELDREDGE	Position/Title: PSC1	Signature: 	
8. Approved by Incident Commander:		Signature: 	
Name: BETH LUND			
ICS 202	IAP Page	Date/Time: 08/30/2017 2100	

ORGANIZATION ASSIGNMENT LIST (ICS 203)

1. Incident Name:		2. Operational Period: DAY	
SUNRISE		Date/Time From: 08/31/2017 0600	Date/Time To: 08/31/2017 2000
		THU	THU
3. Incident Commander(s) and Command Staff:		ORDERING MGR	KRISTI REECE BORIS POFF (T)
IC/UC	BETH LUND	RECEIVING AND DISTRIBUTION MGR	ROB HAMILTON
DEPUTY	MARK GIACOLETTO	BASE CAMP MGR	KURT ROBINS ; DOUG BROWN (T)
SAFETY OFFICER	PAUL GAUCHAY ; BUD DERHAM	SECURITY UNIT	FRANK ANTOS
INFORMATION OFFICER	KJ POLLOCK ; JENNIFER MYSLIVY	7. Operations Section:	
LIAISON OFFICER	BILL BRYANT	OPS SECTION CHIEF	JEFF SURBER
4. Agency/Organization Representative(s):		PLANNING OPS	GREG BURCH
Agency/Organization	Name	Branch	I
USFS	ERIN PHELPS; CAROLE JOHNSON	BRANCH DIRECTOR	ROB MORROW
MINERAL CO COMMISSIONER	LAURIE JOHNSTON; DUANE SIMONS; ROMAN ZYLAWY	DIVISION/GROUP	G UNSTAFFED
MINERAL CO SHERIFF	TOM BAUER	DIVISION/GROUP	T MATT CALL ; RANDY GILBERT (T)
SUPERIOR FIRE CHIEF MINERAL CO DES	ROB TORREY	Branch	II
MONTANA RAIL LINK	TONY BACINO	BRANCH DIRECTOR	BRIAN CARDOZA
MT DOT	WAYNE DYKSTRA	DIVISION/GROUP	C TY VAN KEUREN
MT FISH & WILDLIFE	TYLER RAMAKER	DIVISION/GROUP	H/J/K/L/M BEN ROJAS
MINERAL CO EOC	GEORGE GUPTON	Branch	III
5. Planning Section:		BRANCH DIRECTOR	JOHN KENNEDY MIKE BRADY (T)
CHIEF	JOHN NONEMAN; BRIAN ELDREDGE	DIVISION/GROUP	SUPPRESSION REPAIR HANS OHME IAN SATTERFIELD (T)
RESOURCES UNIT	MESIA NYMAN ; CINDY SCHAFER VINCE CARVER (T)	7b. Air Operations Branch:	
DEMOBILIZATION UNIT	LYDIA MAWSON; SANDY DODGE	AIR OPS BRANCH DIRECTOR	MICHAEL KERRIGAN
SITUATION UNIT	JENNIFER STEVENS	AIR SUPPORT SUPERVISOR	MICKEY SMITH
GIS SPECIALIST	SKIP EDEL ; DAVE HAMMOND; SEAN EDWARDS (T) ; DAN KAISERSHOT (T)	AIR ATTACK SUPERVISOR	JUSTIN CUTLER ; REESE KERBOW(T)
FIRE BEHAVIOR ANALYST	TOBIN KELLEY ; MATT MURPHY (T)	8. Finance/Administration Section:	
INCIDENT METEOROLOGIST	ROBERT HOENISCH	CHIEF	JAMIE PARKER
TECHNOLOGY SUPPORT SPECIALIST	ERNIE ORTIZ ; ANDREW FRESH	TIME UNIT	RANDEE OLSON
HUMAN RESOURCE SPECIALIST	DAVINA DIAZ	PROCUREMENT UNIT	BRENDA MIKULA
RESOURCE ADVISOR	CARLY LEWIS	COMPENSATION UNIT	EILEEN CROUSE
DOCUMENTATION UNIT	CHARLOTTE THOMPSON	COST UNIT	JILL LIPSEY ; M. VANHEMELRYCK (T)
6. Logistics Section:			
CHIEF	MIKE DETTORI ; LAUREL SIMOS		
SUPPLY UNIT	KAY SHURTZ		
FACILITIES UNIT	ALAN YOUNG ; DAVE BARFUSS		
GROUND SUPPORT UNIT	KEN SHURTZ		
COMMUNICATIONS UNIT	JASON BRUCE		
9. Prepared By:		Position/Title: RESL(T)	Signature:
ICS 203	Name: VINCE CARVER	Date/Time: 08/29/2017 2052	
	IAP Page		



Sunrise Fire Weather Forecast



FORECAST NO: 39

NAME OF FIRE: Sunrise

PREDICTION FOR: Thursday Day Shift

UNIT: Lolo National Forest

SHIFT DATE: August 31, 2017

SIGNED: *Bob Hoenisch*

TIME AND DATE

Incident Meteorologist

FORECAST ISSUED: August 30, 2017 @ 2000 MDT

(cell: 406-899-4112)

...RED FLAG WARNING THROUGH 2100 THIS EVENING GUSTY WEST WINDS...

WEATHER DISCUSSION: Breezy west winds are likely today following a weather disturbance that passes through the region early this morning. Temperatures will be slightly cooler behind this disturbance, but the airmass remains very dry and critical fire weather conditions are likely as wind gusts of 20 to 30 mph combine with afternoon humidity around 20 percent. Winds will diminish this evening but remain breezy on Friday.

Weather Forecast for Today:

Weather: Partly cloudy in the morning, becoming mostly sunny in the afternoon. Breezy, especially in the afternoon on ridgetops.

High Temperature... Ridges: 77-81° / Mid-slopes: 81-85° / Valleys: 85-89°

Min RH..... Ridges: 20-24% / Mid-slopes and Valleys: 16-20%

20-FOOT WINDS:

- **Ridgetop and Aligned Canyons.....** West 10-15 mph with gusts to 25 mph after 1200L
- **Slope/Valley.....** West 6 to 12 mph with gusts to 20 mph after 1400L.

CWR (>=0.10").... 0% **LAL....** 1 **Haines Index...3** (low)

Stability: Canyon inversion lifting at 1000L. **Mixing Height:** 10000ft MSL

Weather Forecast for Tonight:

Weather: Mostly clear. Breezy winds in the evening, diminishing after sunset.

Low Temperature... Ridges and mid-slopes: 54°-59° / Valleys: 48°-53

Max RH..... Ridges and mid-slopes: 45-50% / Valleys: 55-60%

20-FOOT WINDS:

- **Ridgetop and Canyons.....** Southwest 5-8 mph with gusts to 15 mph.
- **Slope/Valley.....** Becoming down-slope/down-drainage 3-7 mph.

CWR (>=0.10").... 0% **LAL....** 1

Stability: Inversion developing up to 4500ft

Outlook for Friday:

Weather: Mostly Sunny. Breezy on ridgetops in the afternoon.

High Temperature... Ridges: 77-81° / Mid-slopes: 81-85° / Valleys: 85-89°

Min RH..... Ridges: 20-24% / Mid-slopes and Valleys: 16-20%

20-FOOT WINDS:

- **Ridgetop and Aligned Canyons.....** West 10-15 mph with gusts to 25 mph after 1200L
- **Slope/Valley.....** West 6 to 12 mph with gusts to 18 mph after 1400L.

CWR (>=0.10").... 0% **LAL....** 1 **Haines Index...4** (Moderate)

Stability: Canyon inversion lifting at 1000L. **Mixing Height:** 10000ft MSL

EXTENDED OUTLOOK for Saturday through Monday:

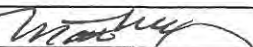
Significant warming and drying occurs this weekend as the high pressure ridge becomes re-established over the region and strengthens. Temperatures will rise back to well above seasonal averages with near record possible Sunday. Overnight humidity recoveries will be very poor this weekend.

Local RAWS Station Observation QR Code:



- I-RAWS 47 TROUT at 3,484 ft
- I-RAWS 27 H-10 at 5,960 ft
- RAWS PARDEE at 4,569 ft

FIRE BEHAVIOR FORECAST

FORECAST NUMBER: 41	TYPE OF FIRE: Wildfire
FIRE NAME: Sunrise and Burdette	OPERATIONAL PERIOD: 8/31/2017 Day
DATE ISSUED: 8/30/2017	TIME ISSUED: 2000
UNIT: MT-LNF	Signed: Matt Murphy, FBAN(t) 

WEATHER SUMMARY: * See attached NWS Sunrise Forecast *****
Warm, Dry, and Windy. Haines Index 4. **Red Flag Warning for Gusty Winds.**

FIRE BEHAVIOR

FUELS: The predominant fuel type in the Sunrise Fire area is mixed Lodgepole pine and Subalpine fir (SB2) at upper elevations, Ponderosa pine and Douglas fir (TU5) at mid elevations, Long needle litter (TL8) at lower elevations and adjacent to the creeks. South facing slopes are mixed brush and cured grass under timber (SH2 and GR2).

Energy Release Component is above the 97th Percentile.!

1 hour fuel moisture: 7% (+1); **10 hour fuel moisture:** 8% (+1); **100 hour fuel moisture:** 8% (0)
Energy Release Component: 82(+1) **Probability of Ignition:** 50% (-8)

Expected Surface Fire Behavior (When Slope and Wind Align):

Low Load Blowdown (SB2): 6' (0) flame length and Rate of Spread 17 (0) ch/hr on a ≥60% slope
Mixed Conifer (TU5): 7' (0) flame length and Rate of spread 11 (+1) ch/hr on a ≥60% slope
Mixed Brush (SH2): 2' (0) flame length and Rate of spread 2 (0) ch/hr on a ≥60% slope
Long needle litter (TL8): 3' (0) flame length and Rate of Spread 7 (0) ch/hr on a ≥60% slope

Local Thresholds: (bold are present**) Most are Present!**
eye level winds over 4 mph, **RH below 25%**, **Temp > 80 deg**, **1000 HR < 12%**

SPECIFIC: Gusty winds expected today. Fire behavior may increase today. Fire continues to move on west and south facing slopes. Ground fire is expected with backing, flanking with isolated torching possible. 1000 hr fuels are extremely dry.

Spotting can occur ¼ to ½ mile from torching trees or shorter when directly across a canyon.

DIV H/J: Continued smoldering. Fire will continue to burn heavy downed fuels and stumps.

DIV K/L/M: Minimal fire activity anticipated. Fire will continue to consume heavy downed fuels in the interior. Needle cast may support ground fire. Improved visibility expected.

DIV T/C: Continued ground fire in the Forty Six and Quartz Creek basins. Flanking and backing fire are anticipated as fire moves across Forty Six Creek basin and ridge above Quartz Creek. Winds will be out of the west and should push smoke over the black. Increased visibility expected.

DIV G (Burdette): Continued smoldering and creeping. Minimal activity anticipated.

AIR OPERATIONS and SMOKE FORECAST:

Visibility will be good for most of the day, smoke clearing around 1000

SAFETY

Unfamiliar with weather and local factors influencing fire behavior. Transition Day!
Safety Zone Separation Distance from 12' Flame: 48' or 1/10th acre (endzone)

Division/Group Assignment List (ICS 204 WF)

1. Incident Name:				3.			
SUNRISE / BURDETTE				Branch: I		Division/Group: G	
2. Operational Period: DAY							
Date/Time From: 08/31/2017 0600 THU		Date/Time To: 08/31/2017 2000 THU					
4. Operations Personnel							
OPERATIONS CHIEF		JEFF SURBER		DIVISION/GROUP SUPERVISOR		UNSTAFFED	
BRANCH DIRECTOR		ROB MORROW		AIR ATTACK SUPERVISOR		JUSTIN CUTLER	
5. Resources Assigned this Period							
Strike Team / Task Force / Resource Designator		LWD	Leader	Number Persons	Drop Off PT./Time	Pick Up PT./Time	
UNSTAFFED							
6. Control Operations/Work Assignments:							
<p>Task: Monitor by air and request bucket drops if necessary.</p> <p>Purpose: Ensure fire does not escape containment.</p> <p>End State: Maintain fire in current perimeter.</p>							
7. Special Instructions:							
8. Division/Group Communication Summary							
Function	Channel	RX Frequency N/W	RX Tone/NAC	TX Frequency N/W	TX Tone/NAC	Mode	
COMMAND	SEE 205						
AIR TO GROUND 1	13	168.2750 N		168.2750 N		A	
9. Prepared By (Resource Unit Leader)			Approved By (Planning Section Chief)			Date	Time
VINCE CARVER			BRIAN ELDRIDGE			08/30/2017	2051

Division/Group Assignment List (ICS 204 WF)

1. Incident Name:				3.			
SUNRISE				Branch: I		Division/Group: T	
2. Operational Period: DAY							
Date/Time From: 08/31/2017 0600 THU		Date/Time To: 08/31/2017 2000 THU					
4. Operations Personnel							
OPERATIONS CHIEF		JEFF SURBER		DIVISION/GROUP SUPERVISOR		MATT CALL (8/31) ; RANDY GILBERT (T)	
BRANCH DIRECTOR		ROB MORROW		AIR ATTACK SUPERVISOR		JUSTIN CUTLER	
5. Resources Assigned this Period							
Strike Team / Task Force / Resource Designator		LWD	Leader	Number Persons	Drop Off PT./Time	Pick Up PT./Time	
ENG6 R2K E-326		09/03	JOHN GALLAGHER	3	ICP/0600	ICP/2000	
SOFR O-497		09/05	FRANK ROTH	1	ICP/0600	ICP/2000	
EMTF O-430		09/03	KELLY MCINROY	1	ICP/0600	ICP/2000	
EMTF O-404		09/03	DAN WOLTERS	1	ICP/0600	ICP/2000	
6. Control Operations/Work Assignments:							
<p>Task: Continue refining pumping operations in Quartz Creek. Maintain and/or repair roads in Quartz Creek. Continue to scout, prep, treat, and hold containment lines north and west of structure 10. Brush out and clear Quartz Creek Trail west of 46 Creek. Plumb containment line (trail) west of structure 10 for long term sprinkler system. Utilize limited helicopter bucket work to check the fire's advance off of the ridge between 46 Creek and Quartz Creek. Recon the Quartz / 46 Creek ridge for opportunity to use retardant as a check line. Patrol Quartz Creek Rd and mop up earlier firing operations. Continue backhaul of excess fire equipment, supplies, and trash. Identify and document suppression repair needs.</p> <p>Purpose: Keep the fire north of Quartz Creek Trail as far as the plumbed line to minimize the possibility of the fire moving east down Quartz Creek.</p> <p>End State: Safely protect the structures and other values at risk along Quartz Creek and reduce the potential advance of fire's southern edge.</p>							
7. Special Instructions:							
<p>1- Consult with READs regarding repair within Quartz Creek road system. Identify options for medical transport, if needed, from Quartz Creek west of 46 Creek. (prepped trail)</p> <p>2- Follow "Hazard Tree Safety" guidelines, IRPG page 22</p> <p>3- Practice "Defensive Driving" techniques and maintain safe speed.</p> <p>4- Dusty roads with short sight distances limit visibility - keep right, reduce speed so you can stop in less than 1/2 your sight distance.</p>							
8. Division/Group Communication Summary							
Function	Channel	RX Frequency N/W	RX Tone/NAC	TX Frequency N/W	TX Tone/NAC	Mode	
COMMAND	SEE 205						
TACTICAL	5	168.2000 N	107.2	168.2000 N	107.2	A	
AIR TO GROUND 1	13	168.2750 N		168.2750 N		A	
9. Prepared By (Resource Unit Leader)			Approved By (Planning Section Chief)			Date	Time
VINCE CARVER			BRIAN ELDRIDGE			08/30/2017	2052

Division/Group Assignment List (ICS 204 WF)

1. Incident Name:				3.			
SUNRISE				Branch: II		Division/Group: C	
2. Operational Period: DAY							
Date/Time From: 08/31/2017 0600 THU		Date/Time To: 08/31/2017 2000 THU					
4. Operations Personnel							
OPERATIONS CHIEF		JEFF SURBER		DIVISION/GROUP SUPERVISOR		TY VAN KEUREN	
BRANCH DIRECTOR		BRIAN CARDOZA		AIR ATTACK SUPERVISOR		JUSTIN CUTLER	
5. Resources Assigned this Period							
Strike Team / Task Force / Resource Designator		LWD	Leader	Number Persons	Drop Off PT./Time	Pick Up PT./Time	
HC2I SAN CARLOS C-70		09/03	MICHAEL G GUTIERREZ	19	ICP/0600	ICP/2000	
ENG6 INLAND E-166		09/03	CLYDE ALBRIGHT	3	ICP/0600	ICP/2000	
FAL1 O-393		09/01	MICHAEL BRADSHAW	1	ICP/0600	ICP/2000	
EMTF O-481.1		09/06	LUIS SAMUDIO	1	ICP/0600	ICP/2000	
EMTF O-481.2		09/06	SEAN KAUFFMAN	1	ICP/0600	ICP/2000	
EMTF O-36		09/05	KENNETH MURPHY	1	ICP/0600	ICP/2000	
6. Control Operations/Work Assignments:							
<p>Task: Monitor fire spread and check progression as appropriate. Mop up where needed to secure lines. Patrol the mid slope road south of DP-2 for roll-out.</p> <p>Purpose: Keep fire east of Trout Creek and north of structures at mine.</p> <p>End State: Safely protect structures and other values along Trout Creek.</p>							
7. Special Instructions:							
<p>1- Follow "Hazard Tree Safety" guidelines, IRPG page 22.</p> <p>2- Practice "Defensive Driving" techniques and maintain safe speed.</p> <p>3- Dusty roads with short sight distances limit visibility - keep right, reduce speed so you can stop in less than 1/2 your sight distance.</p>							
8. Division/Group Communication Summary							
Function	Channel	RX Frequency N/W	RX Tone/NAC	TX Frequency N/W	TX Tone/NAC	Mode	
COMMAND	SEE 205						
TACTICAL	2	166.7750 N	107.2	166.7750 N	107.2	A	
AIR TO GROUND 1	13	168.2750 N		168.2750 N		A	
9. Prepared By (Resource Unit Leader)			Approved By (Planning Section Chief)			Date	Time
CINDY SCHAFFER			BRIAN ELDRIDGE			08/30/2017	2052

Division/Group Assignment List (ICS 204 WF)

1. Incident Name:				3.			
SUNRISE				Branch: II		Division/Group: H/J/K/L/M	
2. Operational Period: DAY							
Date/Time From: 08/31/2017 0600 THU		Date/Time To: 08/31/2017 2000 THU					
4. Operations Personnel							
OPERATIONS CHIEF		JEFF SURBER		DIVISION/GROUP SUPERVISOR		BEN ROJAS	
BRANCH DIRECTOR		BRIAN CARDOZA		AIR ATTACK SUPERVISOR		JUSTIN CUTLER	
5. Resources Assigned this Period							
Strike Team / Task Force / Resource Designator		LWD	Leader	Number Persons	Drop Off PT./Time	Pick Up PT./Time	
ENG4 GREAT BASIN FIRE 69 E-94		09/05	DAVID GRASS	3	ICP/0600	ICP/2000	
ENG4 GIST 404 E-291		09/02	DONALD WOOD	3	ICP/0600	ICP/2000	
* ENG6 LOLO 71				3	ICP/0600	ICP/2000	
* ENG6 LOLO 72				3	ICP/0600	ICP/2000	
ENG6 METAL WORKS E-327		09/04	ISAAC CORDOVA	3	ICP/0600	ICP/2000	
ENG6 MARYLAND E-247		09/13	KEVIN MOORE	3	ICP/0600	ICP/2000	
TFLD O-389		09/02	ALDON CORIZ	1	ICP/0600	ICP/2000	
EMTF O-406		09/04	TONY ORTIZ	1	ICP/0600	ICP/2000	
6. Control Operations/Work Assignments:							
<p>Task: Mitigate snags along Trout Creek corridor. Patrol Trout Creek Road (FS 250) to identify and suppress any spot fires north and west of Trout Creek. Back haul unused pumps and hose. Mop up Trout Creek where appropriate to minimize spotting potential across Trout Creek. Be aware of traffic on Trout Creek Rd.</p> <p>Purpose: Ensure containment of completed control line. Protect values at risk and keep fire south of Trout Creek.</p> <p>End State: Safely protect structures and other values including those in populated areas towards the north and minimize impacts to private land. Keep the fire east of Trout Creek.</p>							
7. Special Instructions:							
<p>1- * Available for Initial Attack. Report to Planning Ops Chief at ICP for instructions.</p> <p>2- Practice "Defensive Driving" techniques and maintain safe speed.</p> <p>3- Dusty roads with short sight distances limit visibility - keep right, reduce speed so you can stop in less than 1/2 your sight distance.</p> <p>4- Chipper operations: ensure all clothing fits properly with no loose ends which would provide a snagging hazard.</p> <p>5- Daily, ensure all emergency shutdown devices are operational and all operational personnel are instructed on emergency shutdown procedures.</p> <p>6- Keep operating area free of tripping hazards.</p>							
8. Division/Group Communication Summary							
Function	Channel	RX Frequency N/W	RX Tone/NAC	TX Frequency N/W	TX Tone/NAC	Mode	
COMMAND	SEE 205						
TACTICAL	6	168.0500 N	107.2	168.0500 N	107.2	A	
AIR TO GROUND 1	13	168.2750 N		168.2750 N		A	
9. Prepared By (Resource Unit Leader)			Approved By (Planning Section Chief)			Date	Time
VINCE CARVER			BRIAN ELDRIDGE			08/30/2017	2052

Division/Group Assignment List (ICS 204 WF)

1. Incident Name:			3.			
SUNRISE			Branch:		Division/Group:	
2. Operational Period: DAY			III		SUPPRESSION REPAIR	
Date/Time From: 08/31/2017 0600 THU		Date/Time To: 08/31/2017 2000 THU				
4. Operations Personnel						
OPERATIONS CHIEF JEFF SURBER		DIVISION/GROUP SUPERVISOR HANS OHME IAN SATTERFIELD (9/4) (T)				
BRANCH DIRECTOR JOHN KENNEDY MIKE BRADY (T)		AIR ATTACK SUPERVISOR JUSTIN CUTLER				
5. Resources Assigned this Period						
Strike Team / Task Force / Resource Designator		LWD	Leader	Number Persons	Drop Off PT./Time	Pick Up PT./Time
TASKFORCE HANSEN O-415		08/31	LORENA HANSEN	1	ICP/0600	ICP/2000
ENG6 CAHOON E-294		09/02	PIERRE MALATARE	3	ICP/0600	ICP/2000
EXCA BLACKFOOT E-131		09/13	CAI WEAR	1	ICP/0600	ICP/2000
WTS2 I KNOW JACK E-95		09/13	JAMES TERMAN	1	ICP/0600	ICP/2000
WTS2 SEVEN BAKERS E-140		09/13	NATHAN BAKER	1	ICP/0600	ICP/2000
FM1 O-456		09/05	CHRISTIAN MASCHO	2	ICP/0600	ICP/2000
FEL2 BRUCH BROS E-237		09/06	SHAWN BRUCH	2	ICP/0600	ICP/2000
GRD JOHNSTON E-117		08/31	KELLY JOHNSTON	2	ICP/0600	ICP/2000
HEQB O-504		09/08	TREVOR KAUFFMAN	1	ICP/0600	ICP/2000
HEQB (T) O-505		09/08	DANIEL GOVONI	1	ICP/0600	ICP/2000
HEQB LOLO			CODY KERPIUS	1	ICP/0600	ICP/2000
TASKFORCE GAGNON O-509		09/09	JUSTIN GAGNON	1	ICP/0600	ICP/2000
TFLD (T) O-500		09/06	BRAD BRYANT	1	ICP/0600	ICP/2000
SKG2 ALLDERDICE E-53		09/03	DAVID MILLER	2	ICP/0600	ICP/2000
EXCA 3 MOR ENTERPRISES E-302		09/06	JUSTIN DOBLE	2	ICP/0600	ICP/2000
DOZ2 TIMBER RANGELAND DOZER E-228.3 - ON IA LOAN-RTN TBD		09/02	STAN KRISTEN	1	ICP/0600	ICP/2000
HEQB O-488		09/06	ERIC RAIKKO	1	ICP/0600	ICP/2000
HEQB (T) O-487		09/06	JAMES MCFARLAND	1	ICP/0600	ICP/2000
8. Division/Group Communication Summary						
Function	Channel	RX Frequency N/W	RX Tone/NAC	TX Frequency N/W	TX Tone/NAC	Mode
COMMAND	SEE ICS 205					
TACTICAL	3	168.2500 N	107.2	168.2500 N	107.2	A
AIR TO GROUND 1	13	168.2750 N		168.2750 N		A
9. Prepared By (Resource Unit Leader)		Approved By (Planning Section Chief)		Date	Time	
VINCE CARVER		BRIAN ELDREDGE		08/30/2017	2052	

Division/Group Assignment List (ICS 204 WF)

1. Incident Name:			3.			
SUNRISE			III		SUPPRESSION REPAIR	
2. Operational Period: DAY						
Date/Time From: 08/31/2017 0600 THU		Date/Time To: 08/31/2017 2000 THU				
4. Operations Personnel						
OPERATIONS CHIEF JEFF SURBER		DIVISION/GROUP SUPERVISOR HANS OHME IAN SATTERFIELD (9/4) (T)				
BRANCH DIRECTOR JOHN KENNEDY MIKE BRADY (T)		AIR ATTACK SUPERVISOR JUSTIN CUTLER				
5. Resources Assigned this Period						
Strike Team / Task Force / Resource Designator		LWD	Leader	Number Persons	Drop Off PT./Time	Pick Up PT./Time
TASKFORCE LARSON O-412		09/01	KRIS LARSON	1	ICP/0600	ICP/2000
TFLD(T) O-469		09/04	NATHAN WIEDOW	1	ICP/0600	ICP/2000
SKG2 BODLE E-239		09/05	AL BODLE	1	ICP/0600	ICP/2000
FEL1 TIMBER RANGELAND E-228.5		09/02	NICK MEYERS	1	ICP/0600	ICP/2000
EXCA PRICE E-335		09/03	BRIAN MILLER	1	ICP/0600	ICP/2000
WTS2 NORTH WEST E-115		09/06	PAUL SOTIN	1	ICP/0600	ICP/2000
HEQB O-489		09/06	PAT REINBOLD	1	ICP/0600	ICP/2000
TASKFORCE EIKENBERRY O-383		09/01	THOMAS EIKENBERRY	1	ICP/0600	ICP/2000
TIMBER RANGELAND LEADER		09/02	CHARLIE JOHNSON	1	ICP/0600	ICP/2000
SKG3 TIMBER RANGELAND E-228.2		09/02	SCOTT ESSMAN	1	ICP/0600	ICP/2000
SKD2 TIMBER RANGELAND E-228.4		09/02	MATT GUYRE	1	ICP/0600	ICP/2000
FORW JOHN JUMP TRUCKING E-342		09/10	KEVIN JUMP	1	ICP/0600	ICP/2000
WTS2 ROCKY MNT FIRE E-116		09/04	JOHN CHAMBERS	1	ICP/0600	ICP/2000
WTS3 WILDLAND CONTR E-118		09/03	KEVIN SMITH	1	ICP/0600	ICP/2000
HEQB O-508		09/07	JIMMY KAMINSKI	1	ICP/0600	ICP/2000
HEQB (T) LOLO			MILO NYSETH	1	ICP/0600	ICP/2000
8. Division/Group Communication Summary						
Function	Channel	RX Frequency N/W	RX Tone/NAC	TX Frequency N/W	TX Tone/NAC	Mode
COMMAND	SEE ICS 205					
TACTICAL	3	168.2500 N	107.2	168.2500 N	107.2	A
AIR TO GROUND 1	13	168.2750 N		168.2750 N		A
9. Prepared By (Resource Unit Leader)		Approved By (Planning Section Chief)		Date	Time	
VINCE CARVER		BRIAN ELDRIDGE		08/30/2017	2052	

Division/Group Assignment List (ICS 204 WF)

1. Incident Name:				3.				
SUNRISE				III	Branch:		Division/Group:	
2. Operational Period: DAY					SUPPRESSION REPAIR			
Date/Time From: 08/31/2017 0600 THU		Date/Time To: 08/31/2017 2000 THU						
4. Operations Personnel								
OPERATIONS CHIEF		JEFF SURBER		DIVISION/GROUP SUPERVISOR		HANS OHME IAN SATTERFIELD (9/4) (T)		
BRANCH DIRECTOR		JOHN KENNEDY MIKE BRADY (T)		AIR ATTACK SUPERVISOR		JUSTIN CUTLER		
5. Resources Assigned this Period								
Strike Team / Task Force / Resource Designator		LWD	Leader	Number Persons	Drop Off PT./Time	Pick Up PT./Time		
TASKFORCE KEISER O-510		09/08	DEREK KEISER	1	ICP/0600	ICP/2000		
SKG2 HART VENTURES E-51		09/08	CHUCK MCCONNELL	2	ICP/0600	ICP/2000		
SKG2 PITMAN RESOURCES E-54		09/05	STEVEN PITMAN	2	ICP/0600	ICP/2000		
EXCA PETERSEN TRUCKING E-22		09/07	JACK KAMMERER	2	ICP/0600	ICP/2000		
WTS2 WILLISON 18 E-97		09/07	CURTIS SMITH	1	ICP/0600	ICP/2000		
TASKFORCE LINEBARGER O-438		09/03	MITCH LINEBARGER	1	ICP/0600	ICP/2000		
ENG3 BUCKSKIN E-331		09/05	MIKE J BYRD	4	ICP/0600	ICP/2000		
ENG3 CAMINOS 1 E-263		09/04	JOHN ROADS	4	ICP/0600	ICP/2000		
ENG3 RAPID CITY E-267		09/10	ALAN JOHNSON	4	ICP/0600	ICP/2000		
ENG3 AZ FORESTRY 231 E-332		09/12	JD C OTTMAN	3	ICP/0600	ICP/2000		
ENG6 INLAND E-167		09/03	DONOVON MAUPIN	3	ICP/0600	ICP/2000		
WTS2 ROCKY MOUNTAIN E-143		09/03	TIMOTHY SCHMIDT	1	ICP/0600	ICP/2000		
CHIP WHITEFISH TREE SVC E-343		09/03	CHRIS LEEVER	1	ICP/0600	ICP/2000		
FOBS (T) O-493		09/06	CHRIS WILLIAMS	1	ICP/0600	ICP/2000		
SOF2 O-327		09/01	RAY MILLER	1	ICP/0600	ICP/2000		
EMTF O-181		09/04	DAVID CAMACHO	1	ICP/0600	ICP/2000		
EMTF O-405		09/02	JENIFER FRASIER	1	ICP/0600	ICP/2000		
EMTF O-179		09/04	SCOTT MAYER	1	ICP/0600	ICP/2000		
8. Division/Group Communication Summary								
Function	Channel	RX Frequency N/W	RX Tone/NAC	TX Frequency N/W	TX Tone/NAC	Mode		
COMMAND	SEE ICS 205							
TACTICAL	3	168.2500 N	107.2	168.2500 N	107.2	A		
AIR TO GROUND 1	13	168.2750 N		168.2750 N		A		
9. Prepared By (Resource Unit Leader)			Approved By (Planning Section Chief)		Date	Time		
VINCE CARVER			BRIAN ELDRIDGE		08/30/2017	2052		

Division/Group Assignment List (ICS 204 WF)

1. Incident Name:		3.				
SUNRISE		Branch: III	Division/Group: SUPPRESSION REPAIR			
2. Operational Period: DAY						
Date/Time From: 08/31/2017 0600	THU	Date/Time To: 08/31/2017 2000				
4. Operations Personnel						
OPERATIONS CHIEF	JEFF SURBER	DIVISION/GROUP SUPERVISOR	HANS OHME IAN SATTERFIELD (9/4) (T)			
BRANCH DIRECTOR	JOHN KENNEDY MIKE BRADY (T)	AIR ATTACK SUPERVISOR	JUSTIN CUTLER			
5. Resources Assigned this Period						
Strike Team / Task Force / Resource Designator	LWD	Leader	Number Persons	Drop Off PT./Time	Pick Up PT./Time	
6. Control Operations/Work Assignments:						
<p>Task: Contingency will continue skidding and decking logs on decks 1, 2, 3 and 4. Begin suppression repair starting from log decks 2 and 3 to meet repair standards. Finalize suppression repair in Divisions L, M, J and K to meet repair standards.</p> <p>Purpose: To stabilize control lines from erosion and public travel and create accessible logging deck locations for the Forest.</p> <p>End State: Continue progression in suppression repair and meet the standards established by the Resource Advisers.</p>						
7. Special Instructions:						
<p>1- Coordinate initiation of all suppression repair operations with READS.</p> <p>2- Follow "Hazard Tree Safety" guidelines, IRPG page 22.</p> <p>3- Practice "Defensive Driving" techniques and maintain safe speed.</p> <p>4- Dusty roads with short sight distances limit visibility - keep right, reduce speed so you can stop in less than 1/2 your sight distance.</p> <p>5 - When working around heavy equipment, the follow HEQ guidelines (IRPG pg. 80).</p> <p>6- Review chipper J.H.A. prior to operation.</p> <p>7- Do not enter Air Curtain operating area without authorization.</p>						
8. Division/Group Communication Summary						
Function	Channel	RX Frequency N/W	RX Tone/NAC	TX Frequency N/W	TX Tone/NAC	Mode
COMMAND	SEE ICS 205					
TACTICAL	3	168.2500 N	107.2	168.2500 N	107.2	A
AIR TO GROUND 1	13	168.2750 N		168.2750 N		A
9. Prepared By (Resource Unit Leader)		Approved By (Planning Section Chief)		Date	Time	
VINCE CARVER		BRIAN ELDRIDGE		08/30/2017	2052	

AIR OPERATIONS SUMMARY

Prepared By: Mike Kerrigan

Prepared Date: 08/30/17

Prepared Time: 2000

1. INCIDENT NAME: Sunrise - Burdette	2. OPS PERIOD DATE: 08/31/17	START TIME: 08:00	END TIME: 21:00	Sunrise: 06:58 Sunset: 20:21
3. RISK MITIGATIONS:				
<ul style="list-style-type: none"> Incident Aircraft conflicts: Utilize ATGS for coordination Aerial Ignition/GPS: Minimize flight in H/V curve as much as practical Erratic winds: Monitor & utilize IMET and DO NOT EXCEED: < 500 ft. AGL: Gusts- 15 knot or Sustained- 40 knots (T1/T2) 30 knots (T3) > 500 ft. AGL: exceeds 50 knots (all) External Loads: Maintain clear commo & minimize exposure under or in flight path 				

6. PERSONNEL	NAME	PHONE	7. FREQUENCIES	AM	FM	8. FIXED-WING - Type/ Make-Model/ N#/ Base
AOBD	Mike Kerrigan	716-957-4705	A/A Sunrise TFR A/A Rotor Wing	126.0000 134.0750		AIR Tankers – Large tankers and SEATS Jared Bohrman – 406.329.4910
ASGS	Mickey Smith	435-260-8521				LEAD Planes
HEB1	Ron Chisholm	907.574.0336	A/G 1- (Primary) A/G 2- (Secondary)	RX TX RX TX	168.2750 168.2750 169.2875 169.2875	ATGS Aircraft 9CS Jim Ward 406.531.9422 (Mineral Cty AP)
DECK						OTHER FW AIRCRAFT- N328SF MMA OTHER FW AIRCRAFT- 149Z Infrared
684H	Matt Feeley	785.317.4431	Air Guard	RX TX	168.6250 168.6250	(Tone 110.9)
102RF	Andy Ruth	513.616.9192	TOLC Deck	RX/TX RX/TX	167.9625 163.1000	Plains Interagency Dispatch-406.826.3061
2773H	Travis Stilman	541.390.1792	Superior (9S4)CTAF	122.9000		Crash Rescue - Randy Torrey - 253.754.2682
161CG	Kevin Halleran	435.640.5424	IA East A/A	126.0500		Sunrisefirehb@gmail.com
401AJ	Thomas Clay	208.630.4475	IA East A/G IA West A/A IA West A/G	RX/TX 134.5000 RX/TX	166.5000	Superior Helibase - 406.822.9090 Airport Manager Steve Temple – 406.382.0161 Superior VFD Chief Rob Torrey – 425.314.2502

9. HELICOPTERS

FAA N#	TY	MAKE/MODEL	BASE	AVAIL	START	REMARKS	FAA N#	TY	MAKE/MODEL	BASE	AVAIL	START	REMARKS
684H	3	Bell 407	Superior	0800	0830	CWN (PSD)	161CG	1	S-61	Superior	0800	0830	CWN
102RF	3	AS350B2	Superior	0800	0830	CWN	401AJ	1	CH-47	Superior	0800	0830	EU
2733H	2	Bell 205++	Superior	0800	0830	EU							

ICS 220 Continued

Missions

Time	Missions
As Requested	Recon(s)
As Requested	Bucket Support to Divisions: J, H, C, T. Contact Branch when priorities aren't clear.
As Requested	Support other incidents as requested, confirm with Air Attack prior to release.

Helibase/Helisports/Dipsites

LOCATION NAME	LATITUDE	LONGITUDE	ELEVATION	REMARKS / HAZARDS
H-13 (DP-47)	47° 03.318	114° 56.370		Div C along 250 road
H-10 (DP-2)	47° 02.345'	114° 54.036'		Div A/H. Type 2 approved
H-15	47° 03.845'	114° 54.515'		(in fire)
H-20 (DP1)	47° 03.040'	114° 51.400'		(in fire)
H-30 (DP-4)	47° 03.070'	114° 50.030'		(in fire)
H-35	47° 04.270'	114° 49.200'		Div M. along Sunrise Creek
H-40 (DP-3)	47° 03.255'	114° 47.762'		Div M.
H-45	47° 02.149'	114° 43.322'		Helispot at ICP
H-50 (DP-6)	47° 00.920'	114° 48.120'	3480'	Div T. type 2 or 3
H-55	47° 01.866'	114° 47.000'		Div T. H3 only. Limited landings, needs improving
H-31 (DP-31)	47° 07.340'	114° 48.533'		Div K/L Branch I/II breaks
DIP-10	47° 01.260'	114° 47.240'		Quartz Creek
DIP-15	47° 03.906'	114° 46.230'		Clark Fork River
DIP-20	47° 01.506'	114° 55.914'		Landowner
DIP-25	47° 00.717'	114° 48.472'		Quartz
DIP-30	46° 59.804'	114° 54.738'		Quartz Mtn. Lakes
Dip - Tank Dip & MRB	47° 08.3'	114° 50.7'		Water Enhancer and Mobile Retardant Base
DIP-40	47° 00.355'	114° 55.600'		Trout Creek
DIP - MINE	47° 03.43'	114° 56.12'		Div H - Settling Ponds below mine on Trout Creek
DIP - MILL	47° 08.9'	114° 49.8'		Wires Upstream - Mouth of Trout Ck/Clark Fork
Helibase	47° 10.115'	114° 51.060'		SUPERIOR AIRPORT (9S4)
Ninemile Helispot	47° 04.47'	114° 24.79'	3300'	Limited Cell Service, CMD 2
H-101	46° 52.743'	114° 37.902'		Burdette Fire
H-105	46° 52.775'	114° 37.417'		Burdette Fire
H-110	46° 51.993'	114° 38.985'		Burdette Fire
H-113	46° 52.261'	114° 38.183'		Burdette Fire
H-115	46° 51.758'	114° 38.322'		Burdette Fire
H-149	46° 49.845'	114° 37.852'		Burdette Fire
H-150	46° 50.151'	114° 40.336'		Burdette Fire
H-160	46° 52.830'	114° 37.280'		Burdette Fire (Contingency Line) - Type 2 approved
Dip-155	46° 51.592'	114° 37.930'		

S U N R I S E

B U R D E T T E

Maple Park - ASD 8/30/17



SAFETY MESSAGE

SAFETY IS OUR FIRST PRIORITY

Fire fighter safety comes first on every fire, every time

Incident: Sunrise	Date: August 31, 2017	Shift: Day
--------------------------	------------------------------	-------------------

SAFETY THOUGHT

“The principle of safety maintains that ensuring the safety of firefighters and other persons affected by fire operations is fundamental to successful action. Safety not only contributes to successful actions, it is indispensable to them.”
(Interagency Standards for Fire . . . {Redbook 01-p010})



MAJOR HAZARDS AND RISKS

A Transition	D Fatigue	G Complacency
B Hazardous Trees	E Exposure	H School Buses
C Driving/Traffic	F Thunderstorms	I Animals on Roadways

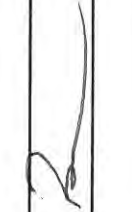
Risk Management Process

The five step process provides firefighters and fire managers a simple, universal, and consistent way to practice risk management by;

- Establishing situation awareness by identifying hazards.
- Assessing hazard potential.
- Developing hazard controls and making risk management decisions..
- Implementing hazard controls.
- Supervising implementation and evaluating effectiveness.

Fireline Safety Officer	Safety Officer
See IAP	Paul Gauchay, Bud Derham

INCIDENT RADIO COMMUNICATIONS PLAN (ICS 205)

1. Incident Name:		2. Date/Time Prepared:		3. Operational Period:		DAY				
SUNRISE		Date:	08/29/2017	Date/Time From:	08/31/2017 0600	THU	Date/Time To:	08/31/2017 2000		
		Time:	2052					THU		
4. Basic Radio Channel Use:										
Zone Group	Ch #	Function	Channel Name/Trunked Radio System Talkgroup	Assignment	RX Freq	RX Tone/NAC	TX Freq	TX Tone/NAC	Mode (A,D, or M)	Remarks
	1	TACTICAL	TAC 1		166.7250 N	107.2	166.7250 N	107.2	A	
	2	TACTICAL	TAC 2	DIV C	166.7750 N	107.2	166.7750 N	107.2	A	
	3	TACTICAL	TAC 3	SUP-REPAIR	168.2500 N	107.2	168.2500 N	107.2	A	SUPPRESSION REPAIR
	4	TACTICAL	TAC 4		168.6000 N	107.2	168.6000 N	107.2	A	
	5	TACTICAL	TAC 5	DIV T	168.2000 N	107.2	168.2000 N	107.2	A	
	6	TACTICAL	TAC 6	DIV H/J/K/L/M	168.0500 N	107.2	168.0500 N	107.2	A	
	7	COMMAND 1	COMMAND 1	COMMAND 1	167.1000 N	107.2	169.7500 N	107.2	A	LINK TO ICP (NEAR ICP)
	8	COMMAND 2	COMMAND 2	COMMAND 2	171.0875 N	107.2	164.8625 N	107.2	A	LINK TO ICP (ON WHITE MTN.)
	9	COMMAND	COMMAND 3	COMMAND 3	171.0250 N	107.2	165.3875 N	107.2	A	LINK TO ICP (ON VAN NESS POINT)
	10	TACTICAL	TAN	MEDICAL	155.3400 N		155.3400 N	156.7	A	AMBULANCE / LIFELINE
	11	EMPTY							A	
	12	TACTICAL	RED	MUTUAL AID	154.0700 N		154.0700 N	156.7	A	IA
	13	AIR TO GROUND 1	A/G 1	AIR TO GROUND	168.2750 N		168.2750 N		A	PRIMARY A/G FOR INCIDENT
	14	AIR TO GROUND 2	A/G 2	AIR TO GROUND	169.2875 N		169.2875 N		A	SECONDARY A/G FOR INCIDENT
	15	EMPTY							A	A/G FREQUENCY RELEASED FROM INCIDENT
	16	AIR GUARD	AIRGRD	AIR GUARD	168.6250 N		168.6250 N	110.9	A	EMERGENCY AIRCRAFT CONTACT
5. Special Instructions:										
FREQUENCIES UNCLASSIFIED BUT SENSITIVE FOR OFFICIAL USE ONLY										
6. Prepared By				Name: JASON BRUCE				Signature: 		
(Communications Unit Leader)								Date/Time: 08/29/2017 2052		
ICS 205				IAP Page						

Sunrise/ Burdette Fire

8/28/2017

CHECK IN/DEMOB	Lydia Mawson	406-822-9075
COMMUNICATIONS	Jason Bruce	406-822-9081
FACILITIES	Alan Young, Dave Barfus	406-822-9073
FINANCE	Jamie Parker	406-822-9078
GROUND SUPPORT	Ken Shurtz	406-822-9091
HELIBASE	SUPERIOR	406-822-9090
IC	Beth Lund	406-822-9083
IMET/FBAN	Robert Hoenisch/Tobin Kelley	406-822-9076
INFO	KJ Pollock/Jennifer Myslivy	406-822-9084
HR	Davina Diaz	406-822-9088
READ	Casey Gatz	406-822-9086
LIAISON	Bill Bryant	406-822-9087
LOGISTICS	Mike Dettori, Laurel Simos	406-822-9074
MEDICAL	Kali McCray	406-822-9082
MISSOULA DISPATCH		406-829-7070
OPS	Greg Burch, Jeff Surber	406-822-9079
Plans/ Resources	Brian Eldredge, John Noneman/ Mesia Nyman	406-822-9089
ORDERING	Kristi Reece	406-822-9077
ORDERING/SUPPLY	Kay Shurtz	406-822-9071
Training	Brian Eldredge	406-822-9089
AIR OPS/SAFETY	Mike Kerrigan/Paul Gauchay/Bud Derham	406-822-9070

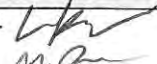

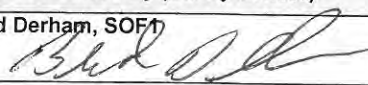
TENTATIVE DEMOB
8/31 thru 9/2

RO#	ITEM	NAME
08/31/2017		
O-173	FFT2	ANDERSON, THOMAS MICHAEL
O-346	HECM	RASMUSSEN, DOUGLAS
O-347	HECM	HILL, ZACH
O-348	HECM	KERN, TAYLOR
O-349	HECM	ALLEN, CORY
O-350	HECM	DUPUIS, JOHN-PAUL
O-363	GSUL	NELSON, MICHAEL
O-398	COMT	CLAAR, WILLIAM
O-502	GISS	HAMMOND, DAVE
E-325	ENG6	SOLOMON 2
09/01/2017		
O-279	SEC2	SEGAR, JAMES
O-327	SOF2	MILLER, RAY
O-332	HMGB	BRANDT, KATIE
O-393	FAL1	BRADSHAW, MICHAEL
O-394	ATGS	KERBOW, REESE
O-415	TFLD	HANSEN, LORENA
E-117	GRD	JOHNSTON
09/02/2017		
O-379	RADO	CODER, SHAWN DENISE
O-383	DIVS	EIKENBERRY, THOMAS
O-412	DIVS	LARSON, KRIS
O-417	COMT	FINERTY, RICHARD
O-435	DIVS	GILBERT, RANDY

MEDICAL PLAN (ICS 206 WF)

1. Incident/Project Name		2. Operational Period						
Sunrise Fire / Burdette Fire		DAY 08/31/17 0600 – 2100						
3. Ambulance Services								
Name	Complete Address	Phone & EMS Frequency	Advanced Life Support (ALS) Yes No					
Superior Ambulance Service	1208 6th Ave. #2, Superior, MT	911 or 406.829.7070	X					
Frenchtown Rural Fire Dept.	16875 Marion St., Frenchtown, MT	911 or 406.829.7070	X					
Missoula Emergency Services	Missoula, MT	911 or 406.829.7070	X					
4. Air Ambulance Services								
Name	Phone	Type of Aircraft & Capability						
Life Flight Network	911 or 406.829.7070	ALS with Night vision						
ALERT	911 or 406.829.7070	ALS with Night vision						
Two Bear Air Rescue	911 or 406.260.4319	Night Vision, 400 lbs hoist, FLIR						
5. Hospitals								
Name Complete Address	GPS Datum – WGS 84 Coordinate Standard Degrees Decimal Minutes DD° MM.MMM' N - Lat DD° MM.MMM' W - Long		Travel Time Air Gnd		Phone	Helipad Yes No		Level of Care Facility
	Lat:	Long:						
Mineral Hospital 1208 6th Ave. Superior, MT	47° 11.136'	114° 52.647'	n/a	1 hr	406.822.5129 ER Direct	<input checked="" type="checkbox"/>	<input type="checkbox"/>	Level 4 Trauma Center
	White	155.280						
	VHF:							
St. Patrick's Hospital 500 W. Broadway Missoula, MT	46° 52.524'	113° 59.969'	25 min	1 hr	406.543.7271	<input checked="" type="checkbox"/>	<input type="checkbox"/>	Level 2 Trauma Center
	White	155.280						
	VHF:							
Community Medical Center 2827 Ft. Missoula Rd. Missoula, MT	46° 50.909'	114° 02.865'	25 min	75 min	406.728.4100	<input checked="" type="checkbox"/>	<input type="checkbox"/>	Level 3 Trauma Center
	White	155.280						
	VHF:							
6. Division Branch Group		Area Location Capability						
ICP Medical Unit		EMS Responders & Capability:		MEDL McCray; EMTB Camerota; MEDL(t) Porter				
		Equipment Available on Scene:		BLS				
		Medical Emergency Channel:		Command				
		ETA for ALS Ambulance:		45 min				
Helibase		EMS Responders & Capability:		EMPF Hooper				
		Equipment Available on Scene:		ALS				
		Medical Emergency Channel:		Command				
		Lat:	47° 10.115'					
Long:	114° 51.060'							

MEDICAL PLAN (ICS 206 WF)

7. Name & Location	Area Location Capability			
Division J/K/H	EMS Responders & Capability:	EMTF Ortiz		
	Equipment Available on Scene:	BLS		
	Medical Emergency Channel:	Command		
	ETA for ALS Ambulance:	50 min		
	Approved Helispot:	H-31		
	Lat:	47° 07.340'		
	Long:	114° 48.533'		
Division T	EMS Responders & Capability:	EMTF Wolters, EMTF McInroy		
	Equipment Available on Scene:	BLS		
	Medical Emergency Channel:	Command		
	ETA for ALS Ambulance:	90 min		
	Approved Helispot:	H-50		
	Lat:	47° 00.791'		
	Long:	114° 48.536'		
Division C	EMS Responders & Capability:	EMTF Murphy, EMTF Samudio, EMTF Kauffman		
	Equipment Available on Scene:	BLS		
	Medical Emergency Channel:	Command		
	ETA for ALS Ambulance:	90 min		
	Approved Helispot:	H-15	H-13	H-10
	Lat:	47° 03.845'	47° 03.318'	47° 02.345'
	Long:	114° 54.515'	114° 56.370'	114° 54.036'
Suppression Repair	EMS Responders & Capability:	EMTF Frasier, EMTF Mayer		
	Equipment Available on Scene:	BLS		
	Medical Emergency Channel:	Command		
8. Prepared By (Medical Unit Leader)	9. Date/Time	10. Reviewed By (Safety Officer)	11. Date/Time	
L. Kaili McCray, MEDL  Mike Porter, MEDL(t) 	8/30/2017 1700	Bud Derham, SOF1 	8/30/2017 1700	

MEDICAL PLAN (ICS 206 WF)

Medical Incident Report

FOR ALL MEDICAL EMERGENCIES: IDENTIFY ON SCENE INCIDENT COMMANDER BY NAME AND POSITION AND ANNOUNCE "MEDICAL EMERGENCY" TO INITIATE RESPONSE FROM IMT COMMUNICATIONS.

Use items one through nine to communicate situation to communications/dispatch.

1. CONTACT COMMUNICATIONS

Ex: "Communications, Div. Alpha. Stand-by for Priority Medical Incident Report." (If life threatening request designated frequency be cleared for emergency traffic.)

2. INCIDENT STATUS: Provide incident summary and command structure.

Nature of Injury/Illness		<i>Describe the injury (Ex: Broken leg with bleeding)</i>
Incident Name		<i>Geographic Name + "Medical" (Ex: Trout Meadow Medical)</i>
Incident Commander		<i>Name of IC</i>
Patient Care		<i>Name of Care Provider (Ex: EMT Smith)</i>

3. INITIAL PATIENT ASSESSMENT: Complete this section for each patient. This is only a brief, initial assessment. Provide additional patient info after completing this 9 Line Report.

Number of Patients:	Male / Female	Age:	Weight:
Conscious? <input type="checkbox"/> YES <input type="checkbox"/> NO = MEDEVAC!		Breathing? <input type="checkbox"/> YES <input type="checkbox"/> NO = MEDEVAC!	
Mechanism of Injury: <i>What caused the injury?</i>			
Lat/Long (Datum WGS84) <i>Ex: N 40° 42.45' x W 123° 03.24'</i>			

4. SEVERITY OF EMERGENCY, TRANSPORT PRIORITY

SEVERITY	TRANSPORT PRIORITY
<input type="checkbox"/> URGENT-RED Life threatening injury or illness. <i>Ex: Unconscious, difficulty breathing, bleeding severely, 2° – 3° burns more than 4 palm sizes, heat stroke, disoriented.</i>	Ambulance or MEDEVAC helicopter. Evacuation need is IMMEDIATE.
<input type="checkbox"/> PRIORITY-YELLOW Serious Injury or illness. <i>Ex: Significant trauma, not able to walk, 2° – 3° burns not more than 1-2 palm sizes.</i>	Ambulance or consider air transport if at remote location. Evacuation may be DELAYED.
<input type="checkbox"/> ROUTINE-GREEN Not a life threatening injury or illness. <i>Ex: Sprains, strains, minor heat-related illness.</i>	Non-Emergency. Evacuation considered Routine of Convenience.

5. TRANSPORT PLAN:

Air Transport: (Agency Aircraft Preferred)

<input type="checkbox"/> Helispot	<input type="checkbox"/> Short-haul/Hoist	<input type="checkbox"/> Life Flight	<input type="checkbox"/> Other
-----------------------------------	---	--------------------------------------	--------------------------------

Ground Transport:

<input type="checkbox"/> Self-Extract	<input type="checkbox"/> Carry-Out	<input type="checkbox"/> Ambulance	<input type="checkbox"/> Other
---------------------------------------	------------------------------------	------------------------------------	--------------------------------

6. ADDITIONAL RESOURCE/EQUIPMENT NEEDS:

<input type="checkbox"/> Paramedic/EMT(s)	<input type="checkbox"/> Crew(s)	<input type="checkbox"/> SKED/Backboard/C-Collar
<input type="checkbox"/> Burn Sheet(s)	<input type="checkbox"/> Oxygen	<input type="checkbox"/> Trauma Bag
<input type="checkbox"/> Medication(s)	<input type="checkbox"/> IV/Fluid(s)	<input type="checkbox"/> Cardiac Monitor/AED
<input type="checkbox"/> Other (i.e. splints, rope rescue, wheeled litter)		

7. COMMUNICATIONS:

Function	Channel Name/Number	Receive (Rx)	Tone/NAC *	Transmit (Tx)	Tone/NAC *
<i>Ex: Command</i>	<i>Forest Rpt, Ch. 2</i>	<i>168.3250</i>	<i>110.9</i>	<i>171.4325</i>	<i>110.9</i>
COMMAND					
AIR-TO-GRND					
TACTICAL					

*(NAC for digital radio system)

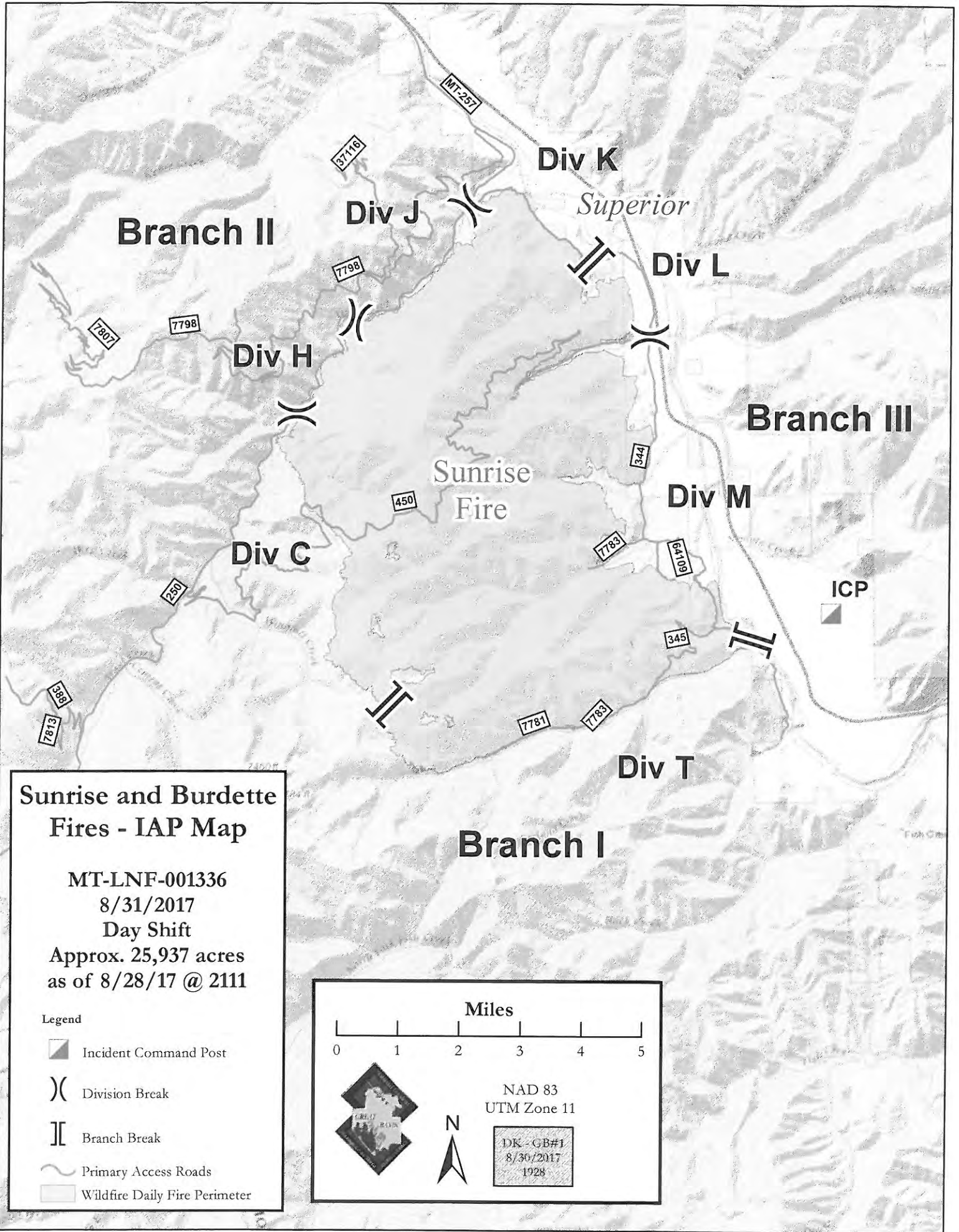
8. EVACUATION LOCATION:

Lat/Long (Datum WGS84) <i>EX: N 40 42.45' x W 123 03.24'</i>	
Patient's ETA to Evacuation Location:	
Helispot/Extraction Size and Hazards:	

9. CONTINGENCY:

Considerations: If primary options fail, what actions can be implemented in conjunction with primary evacuation method? Be thinking ahead...

REMEMBER: Confirm ETA's of resources ordered
Act according to your level of training
Be Alert. Keep Calm. Think Clearly. Act Decisively.



**Sunrise and Burdette
Fires - IAP Map**


MT-LNF-001336
 8/31/2017
 Day Shift
 Approx. 25,937 acres
 as of 8/28/17 @ 2111

Legend


-  Incident Command Post
-  Division Break
-  Branch Break
-  Primary Access Roads
-  Wildfire Daily Fire Perimeter

Miles

0 1 2 3 4 5



N



NAD 83
UTM Zone 11

DK - GB#1
8/30/2017
1928

