

Wednesday, August 26, 2020



# BEAR CREEK INCIDENT ACTION PLAN

P1NET2 (0102)

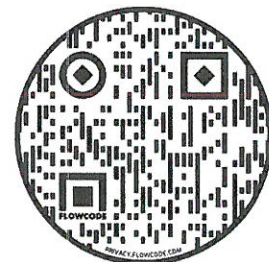
Incident Action Plan

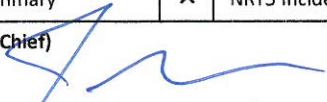
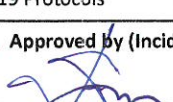


Check in and Demob



Incident Maps



<b>INCIDENT OBJECTIVES</b>		1. Incident Name: <b>Bear Creek</b>		2. Date Prepared: 8/25/2020		3. Time: 2000	
4. Operational Period: <b>August 26, 2020 0600 to 2100</b>							
<p><b>Strategy</b></p> <ul style="list-style-type: none"> <li>Use direct, indirect and point/zone protection strategies to contain and control fire spread, utilizing natural and/or man-made barriers when practical.</li> </ul> <p><b>Incidents Objectives:</b></p> <ul style="list-style-type: none"> <li>Project the natural and cultural resources within the fire planning area including archeological resources (ACEC), the Continental Divide National Scenic Trail, priority greater sage grouse habitat (PHMA), westslope cutthroat trout habitat, inventoried roadless areas (IRA), merchantable timber, and grazing allotments from the potential negative impacts of fire management activities through close coordination with Resource Advisors and utilization of minimum impact suppression tactics (MIST) when feasible.</li> <li>Protect the population and structures located in both the Lemhi Pass Road corridor and Highway 324 corridor to prevent loss of life and infrastructure.</li> </ul> <p><b>Leaders Intent:</b></p> <ul style="list-style-type: none"> <li>Manage risk to responders by ensuring hazards are identified, assessed and where possible mitigated.</li> <li>Minimize exposure of COVID-19 between Team members, resources and community.</li> <li>Accept residual risk when values threatened warrant it and/or the probability of achieving objectives is high.</li> <li>Provide for public safety through dissemination of fire information and timely notification of potential evacuation information.</li> <li>Maintain and improve relationships by communicating and listening to stakeholders, local partners, landowners, and community leaders.</li> <li>Provide initial attack response within the current Bear Creek Temporary Flight Restriction (TFR).</li> <li>Financial consideration will be commensurate with the best approach to achieve fire management objectives in consideration of values at risk.</li> </ul> <p><b>Incident requirements:</b></p> <ul style="list-style-type: none"> <li>Protect natural resources and prevent the spread of Aquatic Invasive species; ensure only one dip site is used at a time, disinfect buckets before using multiple dip sites. Do not transport water over the Continental Divide.</li> <li>Work closely with the assigned FS, BLM and DNRC Resource Advisors (READ) to ensure fire suppression impacts to natural and cultural resources are avoided or minimized. Consult with READs regarding the use of heavy equipment, retardant avoidance areas, noxious weed best management practices, aquatic invasive species and threatened and endangered species.</li> <li>Multiple cultural resources are located across all ownerships in the area. In the event cultural resources are found, threatened and/or damaged, contact a Resource Advisor as soon as possible.</li> </ul>							
6. Weather Forecast for Period: <i>See attached Fire Weather Forecast</i>							
7. General Safety Message: <i>See attached Safety Message</i>							
<b>8. Attachments (mark if attached)</b>							
<input checked="" type="checkbox"/>	ICS 203 Organization Assignment List	<input checked="" type="checkbox"/>	ICS 205 Communication Plan	<input checked="" type="checkbox"/>	Human Resource Specialist Message		
<input checked="" type="checkbox"/>	Fire Weather Forecast	<input checked="" type="checkbox"/>	Safety Message	<input checked="" type="checkbox"/>	Incident Maps		
<input checked="" type="checkbox"/>	Fire Behavior Forecast	<input checked="" type="checkbox"/>	Incident within an Incident Action Plan	<input checked="" type="checkbox"/>	ICS 214 Activity Log		
<input checked="" type="checkbox"/>	ICS 204 Division Assignment Lists	<input checked="" type="checkbox"/>	ICS 206 Medical Plan	<input checked="" type="checkbox"/>	ICS 206WF Medical Plan		
<input checked="" type="checkbox"/>	ICS 220 Air Operations Summary	<input checked="" type="checkbox"/>	NRT5 Incident Covid-19 Protocols				
9. Prepared by (Planning Section Chief)				9. Approved by (Incident Commander)			
							

## ORGANIZATION ASSIGNMENT LIST (ICS 203)

<b>1. Incident Name:</b> BEAR CREEK		<b>2. Operational Period: Date From:</b> 8/26/2020 Time From: 0600		<b>Date To:</b> 8/26/2020 <b>Time To:</b> 2100	
<b>3. Incident Commander(s) and Command Staff:</b>			<b>7. Operation Section:</b>		
IC/UC's	Joe Sampson; Corey Buhl (T)		Operations	Kevin Smith; Paul Diaz (T)	
Deputy			Planning Ops	Ashley Sites	
Safety Officer	Craig Cowie; Jim Freestone; Steve Heppner; Don Hammack (T)		Night Ops		
Information Officer	Terina Goicoechea; Eric Broeder (T)		Staging Area		
Liaison Officer	Diane Hutton; Peri Suenram (T)		<b>Branch</b>		
<b>4. Agency/Organization Representatives:</b>			Division/Group	A	Dave Wilkins
Agency/Organization	Name		Division/Group	D/M	Jason Snellman; Tim Hart (T); Jeremy Beeson (T)
Forest Service	Cheri Ford; Molly Ryan (AA); Anton Brennick (AREP)		Division/Group	G	Josh Barta; Jeff Barnes (T)
			Division/Group	Z / Initial Attack	Craig Roach; Greg Schenk (T)
BLM	Amanda James (AA); Keith Johnson (AREP)		Division/Group		
			<b>Branch</b>		
Montana DNRC	Tim Egan		Division/Group		
Beaverhead County	Tom Rice		Division/Group		
Resource Advisors:			Division/Group		
Forest Service	Katie Bonogofsky; Randie Adams (T) Mike Ryan		Division/Group		
			Division/Group		
BLM	Shannon Gilbert; Bjorn Iverson (T); Steve Lubinski		<b>Branch</b>		
			Division/Group		
MT DNRC	Brent Maddox		Division/Group		
			Division/Group		
<b>5. Planning Section:</b>			Division/Group		
Chief	Mark Glos; Jim Stiteler (T)		Division/Group		
Deputy			Division/Group		
Resource Unit	Patty Bates		Division/Group		
Situation Unit	Matt Todd (T)			<b>COVID TASK GROUP</b>	
Documentation Unit				Safety	Dave Williams (T)
Demobilization Unit	Jode Briggs			Logistics	Bill Lauer
GISS	Howard Williams			Information	Alexandra Schwier
FBAN	Patty Johnson (T)				
Long Term Analyst			<b>8. Air Operations Branch</b>		
Computer Specialist	Amy Johnson; Tammy Lindberg		Branch Director	Steve Croy; Jeff Polack (T)	
Human Resource Spec	Linda Buck		Helicopter Coordinator	Lucas Rhea	
<b>6. Logistics Section</b>			Helibase Manager	Jacob Pastorius; Randy Gilbert (T)	
Chief	Russ Riebe		ASGS Rotorwing	Josh Klare (T)	
Supply Unit	Kimberly Burch		<b>9. Finance/Administration Section:</b>		
Facilities Unit	Gordo Oppelt; Peter Pappas		Chief	BertaLee Mottern	
Ground Support Unit	Kevin Carlisle		Time Unit	Lessie Sites	
Communications Unit	Todd Orr		Procurement Unit		
Food Unit	Dana Stone		Comp/Claims Unit	Mary Coleman; Valerie Sanchez (T)	
			Cost Unit		

Prepared By: Name: *Patty Bates*  
ICS 203

Position/Title: RESL  
Date/Time:

Signature: *Patty Bates*  
8/25/2020 2100 hours



# Fire Weather Forecast

FORECAST NO: 13  
 PREDICTION FOR: Wednesday Day Shift  
 SHIFT DATE: August 26, 2020  
 FORECAST ISSUED: 2000 August 25, 2020

NAME OF FIRE: Bear Creek  
 UNIT: MT-BDF / Sampson IMT5  
 Phone Number: (240) 778-5312  
 Incident Meteorologist: Ryan Leach

\*\*\* THUNDERSTORMS, ERRATIC WINDS 30-40 MPH STARTING 1500-1700 MDT \*\*\*

**WEATHER DISCUSSION:** Thunderstorms continue today, though the probability of rain associated with those storms trends down. Overall, conditions will be similar to yesterday with cooler temperatures, slightly higher RH, and a later start time for thunderstorms in the region. More storms are expected north of the fire than in the area of the fire, or south of the fire. So outflow winds are more likely to come from the north.

**WEATHER FORECAST TODAY (Wednesday):**

	Bear Cr. West (8,000 ft)	Bear Cr. East (7,000 ft)	Staging (6,500 ft)
<b>Max/Min Temp.</b>	68-73F / 48-53F	72-77F / 48-53F	77-82F / 47-52F
<b>Min/Max RH</b>	25-30% / 65-75%	24-29% / 65-75%	22-27% / 50-60%
<b>Daytime Winds (20 ft)</b>	SW 14 gust 20 mph.	SW 15 gust 22 mph.	SW 17 gust 25 mph.
<b>Nighttime Winds (20 ft)</b>	SW 5-7 mph.	Down slope 0-2 mph.	Down slope 2-4 mph
<b>Notes</b>	Thunderstorms start 1500-1700 MDT and may last through 2000. There is a 35% chance of cloud-to-ground lightning within 10 miles. Thunderstorms may cause erratic winds 30-40 mph. 50% chance of rain (> 0.01"), and 15% chance of wetting rain (>0.10")		

**WEATHER:** Partly cloudy (35% sky cover) with thunderstorms and smoke from fires upstream. There is a 50% chance of 0.01" of rain and a 15% chance of a wetting rain (0.10").

**LAL: 3 CWR: 15% HAINES: 3**

**STABILITY / INVERSION:** Weak inversion in the morning breaking around 1100.

**Helibase:** Cloud cover, showers, and higher humidity will combine with smoke from the fire to cause poor visibility in the morning. Visibility will improve by 1100.

**OUTLOOK FOR Thursday:** Partly Cloudy. Max Temps: 69-74F at 7,000 ft. Min RH: 25 - 30%. Max RH: 60-70%. Ridge Winds: W 15 gust 25 mph becoming NW 12 gust 20 mph. LAL 2. CWR 15%. Haines 3.

**THREE DAY EXTENDED (FRIDAY – SUNDAY 7,000 FT)**

	Max T	Min RH	Max RH	Ridge Winds, Afternoon	WX
FRI	72 – 77	17%	35%	W 12G20 mph	
SAT	73 – 78	15%	30%	W 22G32 mph	
SUN	64 – 69	22%	70%	NW 17G25 mph	

# FIRE BEHAVIOR FORECAST

<b>FORECAST NUMBER:</b> 15	<b>TYPE OF FIRE:</b> Wildfire
<b>FIRE NAME:</b> Bear Creek	<b>OPERATIONAL PERIOD:</b> August 26, 2020 Day
<b>DATE ISSUED:</b> August 25, 2020	<b>TIME ISSUED:</b> 2000 hrs
<b>UNIT:</b> Dillon RD, Beaverhead-Deerlodge NF, MT	<b>SIGNED:</b> <i>Patty Johnson</i> _____ Patty Johnson (FBAN-t)

## INPUTS

**WEATHER SUMMARY:** \*\*\*Thunderstorms with Erratic Winds\*\*\*

## OUTPUTS

### FIRE BEHAVIOR

#### GENERAL:

- ❖ Expect similar fire behavior today as yesterday with the higher relative humidity, cloud cover and potential light precipitation. This weather is favorable for mop-up operations.
  - ❖ Until a wetting rain, fire behavior still has the potential to be active in parts of the fire where fuels are receptive. Expect single tree torching, short range spotting, and short crown runs in these areas. This type of fire behavior was observed with 30% relative humidity in the past.
- 
- Fuel types consist of Whitebark pine, Subalpine Fir, Engelmann Spruce, Douglas Fir, Lodgepole Pine (FM9) with a heavy dead and down component (FM 10) at higher elevations, sagebrush and grass (FM2) from lower to mid elevation. Aspen & Willow in drainage bottoms.
  - Fuel Moistures; Live – Lodgepole 66-125%, Douglas Fir 85-104%, Sage 70%, Seedling/Sapling 66-85%. Dead - 1000hr 5-8%. Duff 13-20%.
  - Topography consists of steep, broken terrain, chutes and chimneys which effects wind speeds and direction.
- 
- Observed weather and fire behavior from previous days when fire made runs (8/11, 8/14, 8/17) indicate relative humidity below 15 and winds above 15 resulted in spread rates of .25 mile per hour, torching and 0.10 mi spotting.
  - Observed rates of spread with 7-20 mph winds: 2 - 17 ch/hr
  - Observed flame lengths with 7-20 mph winds: 1 – 6 ft
  - Observed spotting distance: 0.1 - 0.5 miles
  - Probability of Ignition (Pig): 50% with Fine Dead Fuel Moisture of 7%
  - Burn period: 1300-2100. However, fire has been observed burning throughout the night until about 0500 when the thermal belt is below the fire.

#### SPECIFIC:

**Div A/Z:** Residual fuels interior will continue to burn out with fire behavior being that of smoldering and creeping. Potential still exists for single tree torching and spotting where heavy dead/down fuels exists near standing dead.

**Div M/D:** Interior fuels will continue to burn out with smoldering and creeping. Fuels along the CDT will be receptive to spot fires from unburned timbers downhill to the east of the continental divide. However, fuels in this area are light to moderate in fuel loading and timber is widely spaced making the potential for fire to spread on the divide small.

**Div G:** No fire activity.

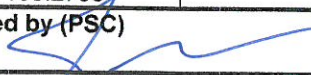
**AIR OPERATIONS:** Low visibility, prediction for the a.m., may limit air operations.

## SAFETY

Thunderstorm activity may result in high winds, outflow winds, rain and lightning. Think about how this may affect your part of the fire in terms of spread rates and direction.

**\*\*Feedback is welcome. Have a safe shift. \*\***



ASSIGNMENT LIST		1.Branch	2. Division/Group		D / M	
3. Incident Name <b>BEAR CREEK</b>		4. Operational Period Date: August 26, 2020      Time: 0600 - 2100				
5. Operations Personnel						
Operations Chief	Ashley Sites; Kevin Smith; Paul Diaz (T)		Division/Group Supervisor	Jason Snellman; Tim Hart (T); Jeremy Beeson (T)		
Branch Director			Air Operations Director Air Attack Supervisor	Steve Croy; Jeff Polack (T)		
6. Resources Assigned This Period						
Strike Team/Task Force/ Resource Designator	Last Shift	Leader	No. Pers.	Trans. Needed	Drop Off PT./Time	Pick Up PT./Time
O-98 WFM2 St Joe Fire Use Module	8/31	Ryle Benke	9	N	DP28 / 0600	DP28 / 2100
O-122 TFLD Cory Rennaker	9/2		1	N	DP28 / 0600	DP28 / 2100
O-43 TFLD Zach Lee (T)	8/27		1	N	DP28 / 0600	DP28 / 2100
O-22 EMPF Lexi Rittenour	8/27		1	N	DP28 / 0600	DP28 / 2100
O-137 SOF2 Steve Heppner	9/5		1	N	DP28 / 0600	DP28 / 2100
C-5 HC1 Midnight Sun IHC	8/26	Miles Bond	22	N	DP5 / 0600	DP5 / 2100
O-99 WFM2 Kaniksu Module	8/31	Eric Morgan	9	N	DP5 / 0600	DP5 / 2100
E-14 SKG2 Scott's Fire Service	8/26		2	N	DP5 / 0600	DP5 / 2100
E-15 SKG2 Timber Solutions	8/26	Jeff Nelson	2	N	DP5 / 0600	DP5 / 2100
E-16 SKG3 AC Logging	8/26	Alan Conover	2	N	DP5 / 0600	DP5 / 2100
E-10 Heavy Equipment Task Force	8/26	Jeff Holiday	7	N	DP5 / 0600	DP5 / 2100
O-105 HEQB Erin Colleen	9/1		1	N	DP5 / 0600	DP5 / 2100
O-106 HEQB Sam Brownlee	9/1		1	N	DP5 / 0600	DP5 / 2100
O-44 TFLD Seth Avery	8/28		1	N	DP5 / 0600	DP5 / 2100
O-40 TFLD Dave Maclay-Schulte	8/28		1	N	DP5 / 0600	DP5 / 2100
O-18 TFLD Josh Stroot	8/26		1	N	DP5 / 0600	DP5 / 2100
O-113 TFLD Seth Bond (T)	9/1		1	N	DP5 / 0600	DP5 / 2100
O-11 SOF2 Jim Freestone	8/26		1	N	DP5 / 0600	DP5 / 2100
7. Control Operations						
<p><b>Task:</b> Continue to repair damage and mitigate potential soil erosion and impacts resulting from fire suppression actions. Repair dozer line between H1 and H2.</p> <p><b>Purpose:</b> Mitigate or eliminate resource or other damage occurring as a result of fire suppression activities.</p> <p><b>End State:</b> Control lines, roads, trails, and drop points used during fire suppression efforts are repaired.</p>						
8. Special Instructions:						
<i>Coordinate with resource advisors</i>						
9. Division/Group Communication Summary						
Function	Frequency - RX	Frequency - TX	Tone	Channel	Comments	
Command 6	170.000	166.6750	136.5	6	Tac 5 for resources at DP28; TAC 3 for resources at DP5	
Command 7	170.6875	166.5750	136.5	7		
Tactical	168.2500	168.2500	136.5	5		
Tactical	166.6000	168.6000	136.5	3		
Air to Ground	167.9500	167.9500		13		
Air to Ground	168.2750	168.2750		14		
Prepared by (RESL) <i>Patty Bates</i>		Approved by (PSC) 		Date 8/25/2020	Time 2130	







<b>1. INCIDENT NAME:</b> Bear Creek and Shale Creek Fires	<b>2. OPS PERIOD DATE:</b> 08-26-2020	<b>START TIME:</b> 0800	<b>END TIME:</b> 2100	<b>SUNRISE:</b> Dillon: 0645	<b>SUNSET:</b> Dillon: 2018	<b>Pumpkin:</b> Dillon: 2048
<b>ICS-220 AIR OPERATIONS SUMMARY</b> Prepared By: Jeff Polack AOB(T) 08/25/2020 Prepared Time: 1900						
<b>3. REMARKS</b> (Safety Notes, Hazards, Air Operations Special Equipment, etc.): Assess mission complexity and the Benefit/Risk of the mission. Ensure visibility and winds are adequate to safely conduct flight operations. Ensure safe vertical & horizontal separation between aircraft in smoky conditions. Call in and out of the dips. Smoky conditions can hamper aviation operations adhere to visibility limitations, and DO NOT be pressured into accepting a mission that you know or feel is unsafe! ( <i>Terminate rotorwing operations no later than 1945 due to visibility concerns, will be adjusted as necessary based on operations and safety.</i> )						
<b>4. READY ALERT AIRCRAFT 401HQ</b> Hospitals w Type 2 Approve LZ's -Butte- St. James 46 00.541 x 112 32.670 -Dillon-Barrett 42 12 .131 x 112 38.790 -Ennis-Madison Valley 45 21.146 x 111 43.924 Talk direct to hospital on White Freq: 155.280 Life Flight & ground ambulance on Tan Freq: 155.340						
<b>5. TFR's:</b> Bear Ck: 0/1304 Freq:118.600 5NM Circle, Altitude: Surface to 12,500 MSL						

6. POSITION	NAME	PHONE #	7. FREQUENCIES	AM	FM	8. Aircraft Ordering Protocol
Forest Aviation Officer	Dennis A. Morton	406.660.2318	A/G Tac A/G Cmd		167.9500 (A-11) 168.2750 (A-24)	AIRTANKERS/SICOOPERS Order thru Line Operation
Dillon Dispatch	Aircraft Desk	406.683.3975	A/G 29 Shale Ck		166.900	SEATS Order thru Line Operations
AOBD AOBD (T)	Steve Croy Jeff Polack	540.230.2568 208.816.3447	A/A Helicopters A/A Fix-Wing	124.700 (A-10) 118.600 (A-9)		AIR ATTACK Order thru Line Operations HLCO
ASGS (T) RW	Josh Klare	406.360.0875	Bear Ck. Command		Rx170.00 t136.5 Tx166.6750 t136.5	Order thru Line Operations Helicopters
HEBM HEBM (T)	Jacob Pastorius Randy Gilbert	406.459.4558 406.925.3779	LemhiRpt. from Fire to Dillon Dispatch		Rx172.350 TX165.750 110.9TT	Order thru Division Supervisor
HLCO	Lucas Rhea	702.556.2255	National Flight Follow		168.6500 110.9 TX/RX	
			AIR GUARD		168.6250 110.9 TX/RX	
<b>NOTES:</b> Elevation: 6550' BEAR CREEK HLB: 44° 54.185' x 113° 22.066' PLANNED MISSIONS:Recons,Buckets and Support Loacl I.A. if possible.						
<b>9. HELICOPTERS</b> Shale Creek Helispot: 45° 23.088' x 113° 07.376' Elevation 6510'						

CALL SIGN / FAA #	TY	MAKE/ MODEL	BASE	Start	Avail	REMARKS	CALL SIGN / FAA #	TY	MAKE/ MODEL	BASE	Start	Avail	REMARKS
357KA(A-7)	1	KMAX	Bear Ck HB	0800	0900	Buckets	401HQ(A-17)	3	AS-350B3	Bear Ck HB	0800	0900	Buckets,Cargo,Recon +Short Haul
215F(A-49)	2	UH-1H	Bear Ck HB	0800	0900	Forest (BDF) Buckets	144MA(A-1)	3	Bell 407	Twin Brigdes	0800	0900	On Forest IA (BDF) Recon/Cargo
210MA(A-19)	2	Bell 210	Bear Ck HB	0800	0900	Buckets/Cargo	26HX(A-12)	3	AS-350B3	Bear Ck DLN	0800	0900	HLCO

INCIDENT RADIO COMMUNICATIONS PLAN I-205				1. INCIDENT NAME		2. DATE/TIME PREPARED		3. OPERATIONAL PERIOD DATE/TIME			
Bear Crk				Bear Crk		08/25/2020 1537		08/26/2020 0700 - 2100			
4. BASIC RADIO CHANNEL UTILIZATION											
Ch #	Function	Channel Name	Assignment	RX Freq	N/W	RX Tone/NAC	TX Freq	N/W	TX Tone/NAC	Mode Analog (A) Digital (D) Mixed (M)	Remarks
1	TACTICAL	TAC 1	DIV A	168.0500	N	136.5	168.0500	N	136.5	A	
2	TACTICAL	TAC 2	DIV G	168.2000	N	136.5	168.2000	N	136.5	A	
3	TACTICAL	TAC 3	DIV M	168.6000	N	136.5	168.6000	N	136.5	A	
4	TACTICAL	TAC 4	DIV Z	166.7250	N	136.5	166.7250	N	136.5	A	
5	TACTICAL	TAC 5	DIV D	168.2500	N	136.5	168.2500	N	136.5	A	
6	COMMAND	CMD 6	ALL Div's	170.0000	N	136.5	166.6750	N	136.5	A	From DIV's To ICP
7	COMMAND	CMD 7	ALL Div's	170.6875	N	136.5	166.5750	N	136.5	A	From ICP To Div's
8					N			N		A	
9	LOCAL FS	LEMHI PASS	ALL Div's	172.3500	N		165.7500	N	110.9	A	Local FS Contact
10	LOCAL FS	MAVERICK	ALL Div's	172.3500	N		165.7500	N	100.0	A	Local FS Contact Shale Crk
11	MUTUAL AID	RED	ALL Div's	154.0700	N		154.0700	N	156.7		State Fire Mutual Aid
12	AIR TO GROUND	A/G #26	ALL Div's	166.6875	N		166.6875	N		A	B-D Air to Ground
13	AIR TO GROUND	BEAR A/G	ALL Div's	167.9500	N		167.9500	N		A	Bear Crk Fire Primary
14	AIR TO GROUND	BEAR A/G	ALL Div's	168.2750	N		168.2750	N		A	Bear Crk Fire Secondary
15	AIR TO GROUND	TAN	MEDIVAC	155.3400	N		155.3400	N	156.7	A	Air Medical/Life Flight
16	AIRGUARD	AIRGUARD	ALL Div's	168.6250	N		168.6250	N	110.9	A	Air Emergency
5. Special Instructions:											
6. I-205 Prepared By: Communications Unit Leader						Name: Todd Orr COM1		Signature:			



# Safety Message

## Bear Creek Incident

Operational Period: 8/26/2020

Day Shift

## Heat Illness: Symptoms and Prevention

### Heat-Related Disorders

Heat stroke occurs when the body no longer sweats and body temperature reaches dangerous levels. Symptoms of heat stroke include:

- Dry, hot reddish skin and lack of sweating
- High body temperature
- Strong, rapid pulse
- Chills
- Confusion
- Slurred speech

Heat exhaustion is the body's response to the loss of water and salt, typically through sweating. Symptoms of heat exhaustion include:

- Excessive sweating
- Weakness or fatigue
- Dizziness and/or confusion
- Clammy skin
- Muscle cramps
- Flushed complexion

Heat cramps are painful cramps in the body's muscles due to low salt levels and are typically caused by excessive sweating. Symptoms of heat cramps include:

- Muscle pain usually in the abdomen, arm or legs.
- Muscle spasms usually in the abdomen, arm or legs.

Heat Rash is an irritation of the skin caused by excessive sweating. Symptoms of heat rash include:

- Red cluster of pimples or small blisters
- Usually on neck and upper chest, groin area, under the breasts, and in elbow creases.

## Bear Creek FIRE

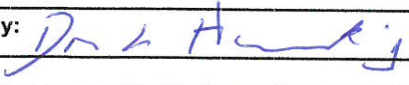
### Incident within an Incident Emergency Action Plan

In the case of a serious accident requiring patient transport to a medical facility:

- The closest ranking Operations Leader (i.e. Division Supervisor) at the accident scene will take charge and be the Point of Contact (POC).
- Use the 8-line protocol to assess patient, if patient evaluation is either Red or Yellow use Bear Creek Command (Command CH- 6) RX-170.00000 TX-166.67500 Tone- 136.5 on both TX and RX. Air extraction resources will use Air to Ground tactical or TAN to communicate with Incident IC.
- If incident should occur outside the Bear Creek Incident contact Dillon Dispatch on Lemhi Pass Ch. 9 to have them call 911.
- Contact Bear Creek Communications on Command frequency for monitoring and support and to notify whether patient is incident personnel or civilian.
- Patients evaluated as Green notify nearest supervisor of the location of the incident and assigned EMT to determine treatment and transport to Medical Unit.
- Upon notification of a serious accident, the Following will report to the ICP Safety Tent, Incident Commander, Safety Officer, Operations Section Chief (Planning OPS), and Medical Unit Leader will report to the Forward Operating Base Communications to monitor IWI.
- Incident Radio traffic will be monitored 24 hours a day on Lemhi Pass Ch-9 at Dillion Dispatch.

Approved by:  /s/  \_\_\_\_\_ Incident Commander

Date:

<b>Developed by: Connie Weeks - MEDL</b>			<b>Approved by: Don Hamack - SOF</b>				
1. Incident/Project Name			2. Operational Period: Aug 26				
Bear Creek Fire			Date/Time 08/25/2020 1800				
3. Ambulance Services							
Ambulance	Complete Address		Phone & EMS Frequency	Advanced Life Support (ALS) Yes No			
Beaverhead Ambulance	Dillon, MT		911	X			
Missoula Ambulance E-11	At incident - Shoshone Ridge Staging			X			
4. Air Ambulance Services							
Name		Phone	Type of Aircraft & Capability				
Life Flight Network		911	Paramedics/Flight Nurse/Night vision				
2 Bear Air		911	Hoist/Paramedics				
5. Hospitals							
Name Complete Address	GPS Datum - WGS 84 Coordinate Standard Degrees Decimal Minutes DD° MM.MMM' N - Lat DD° MM.MMM' W - Long		Travel Time Air Gnd		Phone	Helipad Yes No	Level of Care Facility
	Lat:	N 42 12.131	20 min	40 min	406-683-1113 After hours 406-683-3000	<input checked="" type="checkbox"/> <input type="checkbox"/>	Critical Access
Barrett Memorial Hospital 600 Hiway 91 South Dillon, MT 59725	Long:	W 112 38.790					
	VHF:	155.280 white					
St. James Health Care 400S. Clark Butte, MT	Lat:	N 46 00.541	45 min	100 min	406-723-2585	<input checked="" type="checkbox"/>	Level 3
	Long:	W 112 32.670					
	VHF:	155.280 white					
St. Patrick's Hospital 500 W. Broadway Missoula, MT 59808	Lat:	N 46 52.542	45 min	150 min	406-329-5635 Ext.1 ER	X	Level 2
	Long:	W 114 00.000					
	VHF:	155.280 white					
6. Division   Branch   Group						Area Location Capability	
All Divisions		Equipment Available on Scene:		Resources on Scene:			
DIV A		Crew Supplies	ALS Kit, TRS	Crew EMTs	Lexi Rittenour - EMPF		
DIV D		ALS Kit, TRS		Lexi Rittenour - EMPF			
DIV G							
DIV M		Crew Supplies		Crew EMTs			
DIV Z		Crew Supplies		Crew EMTs			
DP- 59		ALS Kit, AED, TRS		Melanie Miller - EMPF			
❖ Medical Unit is up and running near Supply. If you have needs, work through your supervisor to arrange support.							
Prepared by: Connie Weeks		Approved by: 					

## Northern Rockies Team 5 Incident COVID-19 Protocols

Leader and Team intent is to utilize the most current CDC, NWCG, NRCG and local health department guidance to provide for the safety and health of ALL resources on this incident. **If you or an individual you supervise becomes symptomatic, isolate the individual(s), and work through your chain of command ultimately informing the Medical Unit Leader to arrange next steps.**

### SCREENING

All personnel will self-monitor for symptoms before they come to work. Workers who have symptoms of COVID-19 should immediately notify their supervisor and safety officer and self-isolate. They can also enter their symptoms into the [CDC Coronavirus Self-Checker](#) to determine whether they need to seek medical care.

### DAILY SCREENING:

All persons at incident facilities, including contractors, crews, overhead, and general public should be screened on arrival and daily while on the assignment.

- Verbal screening (from a distance of at least 6 feet) to determine if workers have had symptoms of COVID-19 within the past 24 hours.
- Daily temperature checks are highly recommended of workers at the start of each shift to identify anyone with a fever of 100.4°F or greater.
  - Ensure that screeners are trained to use temperature monitors.
  - Make sure that temperature monitors are accurate under conditions of use (such as cold or hot temperatures).
  - Avoid direct sunlight when recording temperatures

### CONTACT LOG:

All personnel and crews/modules should keep a daily unit log for all contacts outside your module, including fire personnel and general public, in case of exposure.

### FACE MASKS:

Face coverings, either surgical masks or simple cloth style masks, are one of the key tools to ensure the health of all resources on this incident. The expectation is that all resources will wear a face mask when indoors, where social distancing of 6ft or greater cannot be maintained, and in vehicles unless you are alone. This applies to briefings/meetings, ICP yurts, Remote ICP joint workspaces, and similar situations.

Examples of “exclusions” would be within your own sleeping tent, alone in your own hotel room, or outdoors if distanced well away from any other personnel.

### MODULES AND DISTANCING:

Maintaining Module As One is not intended as a stand-alone virus prevention tactic. Masks and social distancing should be utilized even within your own work unit or when with the same coworkers on a daily basis.

Additionally, current CDC info estimates that 40% of people carrying the COVID virus will show NO symptoms, while still spreading the virus itself to you. You cannot rely on seeing that someone is sick before you engage in distancing or other precautions to prevent you contracting it. You should follow CDC best practices for handwashing, cleaning of common surfaces, and respecting the personal space/distancing needs of all other resources on this fire.

Continued on following page →

❖ **For individuals who frequently come into contact with common surfaces and multiple groups/modules including; camp crews, base camp/spike camp managers, ground support, supply, medical, food unit, showers, etc.**

Because you are considered a higher vector of spread, working with/around common surfaces and equipment, you will need to take additional precautions including:

- Disciplined social distancing
- Wearing a facial covering especially when social distancing is not possible such as in a vehicle or meeting.
- Increased personal hygiene (handwashing/sanitizing)
- Increased screening
- Frequent disinfecting of common surfaces/equipment such as vehicles, equipment, etc.

#### DISINFECTION PROCEDURES

The following steps can be taken to help minimize the spread of the COVID 19 virus.

Clean and disinfect high-touch surfaces as needed to minimize the potential of spreading the virus. Surfaces such as door handles, toilets/porta-potties, sinks, etc. may need to be disinfected after each use. See below for disinfecting recommendations.

### **DO NOT MIX BLEACH AND AMMONIA BASED CLEANING PRODUCTS**

To disinfect:

Most common EPA-registered household disinfectants will work. Use disinfectants appropriate for the surface. Follow manufacturer's instructions for application and proper ventilation. Check to ensure the product is not past its expiration date. Never mix household bleach with ammonia or any other cleanser.

Surface Cleaning

- Wear disposable gloves when cleaning and disinfecting surfaces. Gloves should be discarded after each cleaning. If reusable gloves are used, those gloves should be dedicated for cleaning and disinfection of surfaces for COVID-19 and should not be used for other purposes. Consult the manufacturer's instructions for cleaning and disinfection products used. Clean hands immediately after gloves are removed.
- If surfaces are dirty, they should be cleaned using a detergent or soap and water prior to disinfection.
- EPA-registered household disinfectants, alcohol solutions with at least 70% alcohol, and unexpired household bleach will be effective against coronaviruses.
  - To make a bleach solution, mix:
    - 5 tablespoons (1/3rd cup) bleach per gallon of water –OR –
    - 4 teaspoons bleach per quart of water
  - Follow the manufacturer's instructions for all cleaning and disinfection products (e.g., concentration, application method and contact time, etc.).

#### **Other common EPA-registered household disinfectants.**

Products with EPA-approved emerging viral pathogens claims are expected to be effective against COVID-19 based on data for harder to kill viruses. Follow the manufacturer's instructions for all cleaning and disinfection products (e.g., concentration, application method and contact time, etc.).

Prepared by (Safety Officer)

Approved by (Incident Commander)





## Human Resource Message

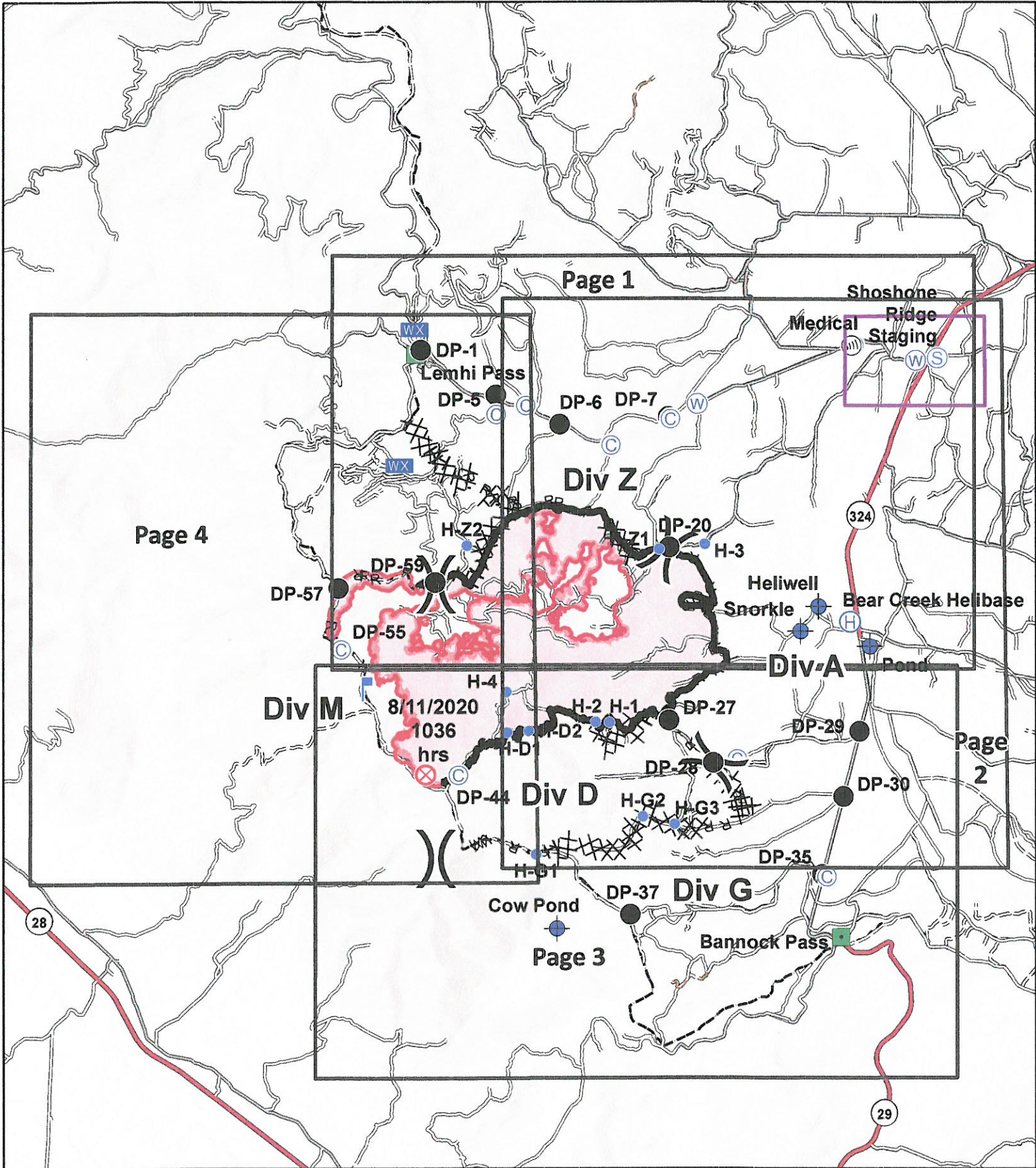
**Thank you** for all the hard and long days you've put in. Your commitment, attitude and work ethics have helped to create a good work environment. No doubt you've had minor issues. Resolving them is key.

Please continue to maintain your professional behavior and attitude in the challenging work you do.

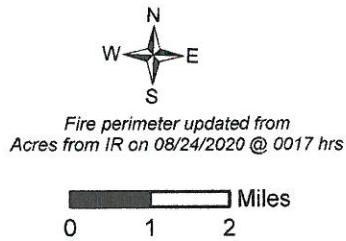
Team work helps individuals through crisis and change as well as facilitates the release of tension. It increase employees' ability to cope with stress on the job and to remain flexible, creative, and innovative under pressure, central features of a strong resilient corporate/fire culture.

An environment that fosters camaraderie is characterized by positive energy, high self-esteem and team spirit.

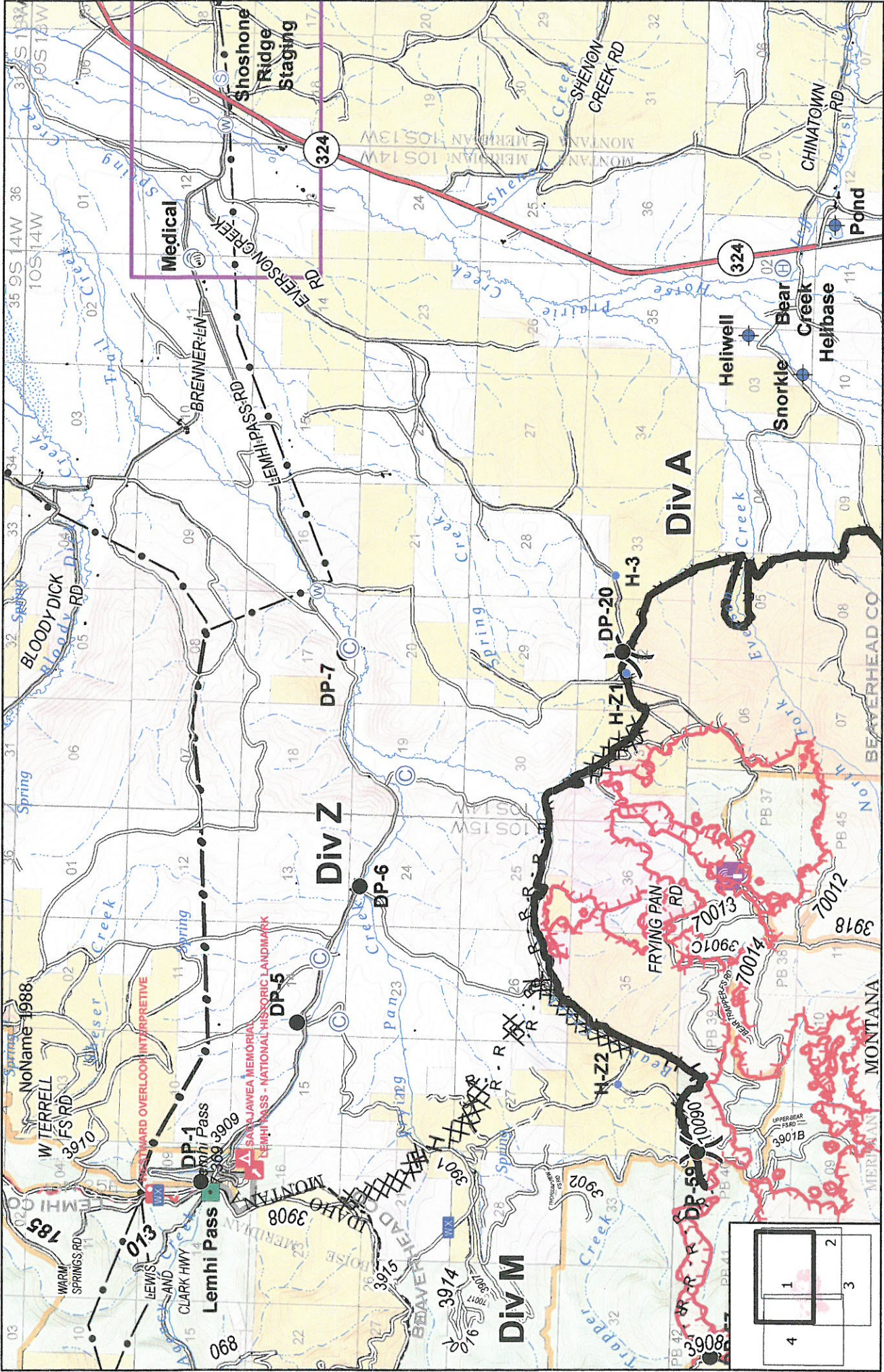
Human Resource Specialist Linda Buck



**IAP Index**  
**Bear Creek**  
**MT-BDF-006610**  
**August 26, 2020**  
**11,236 acres**

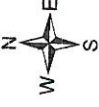


- Uncontrolled Fire Edge
- Contained Line
- Completed Dozer Line
- Completed Hand Line
- Road as Completed Line
- Fire Break Planned or Incomplete
- Road Repair
- Wildfire Daily Fire Perimeter
- Spike Camp
- + Dip Site
- Drop Point
- Fire Origin
- + First Aid Station
- Helibase

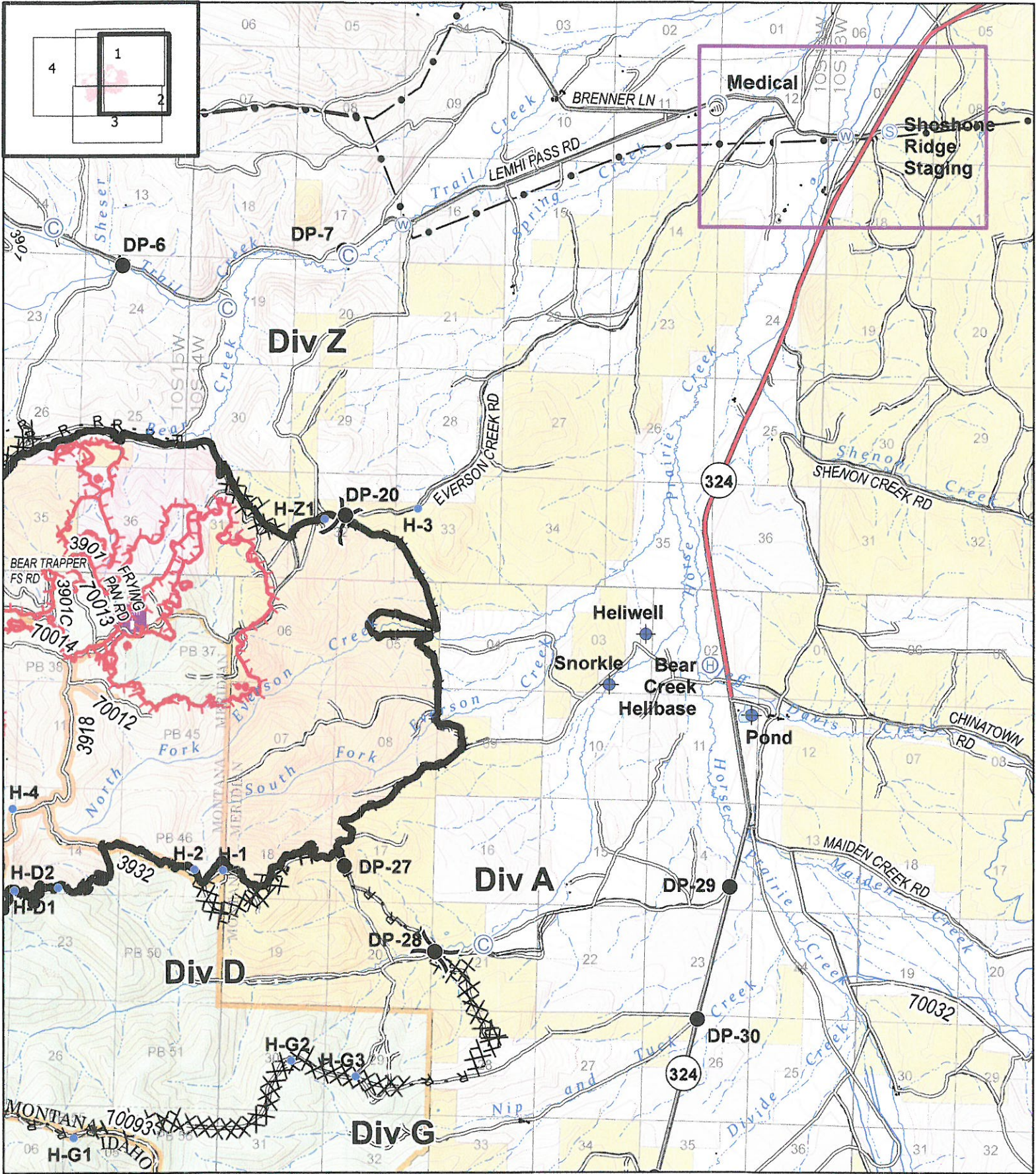


**IAP**  
**Bear Creek**  
**MT-BDF-006610**  
**August 26, 2020**  
**11,236 acres**

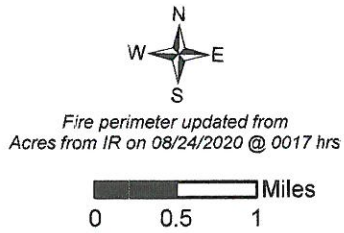
Fire perimeter updated from  
 Acres from IR on 08/24/2020 @ 0017



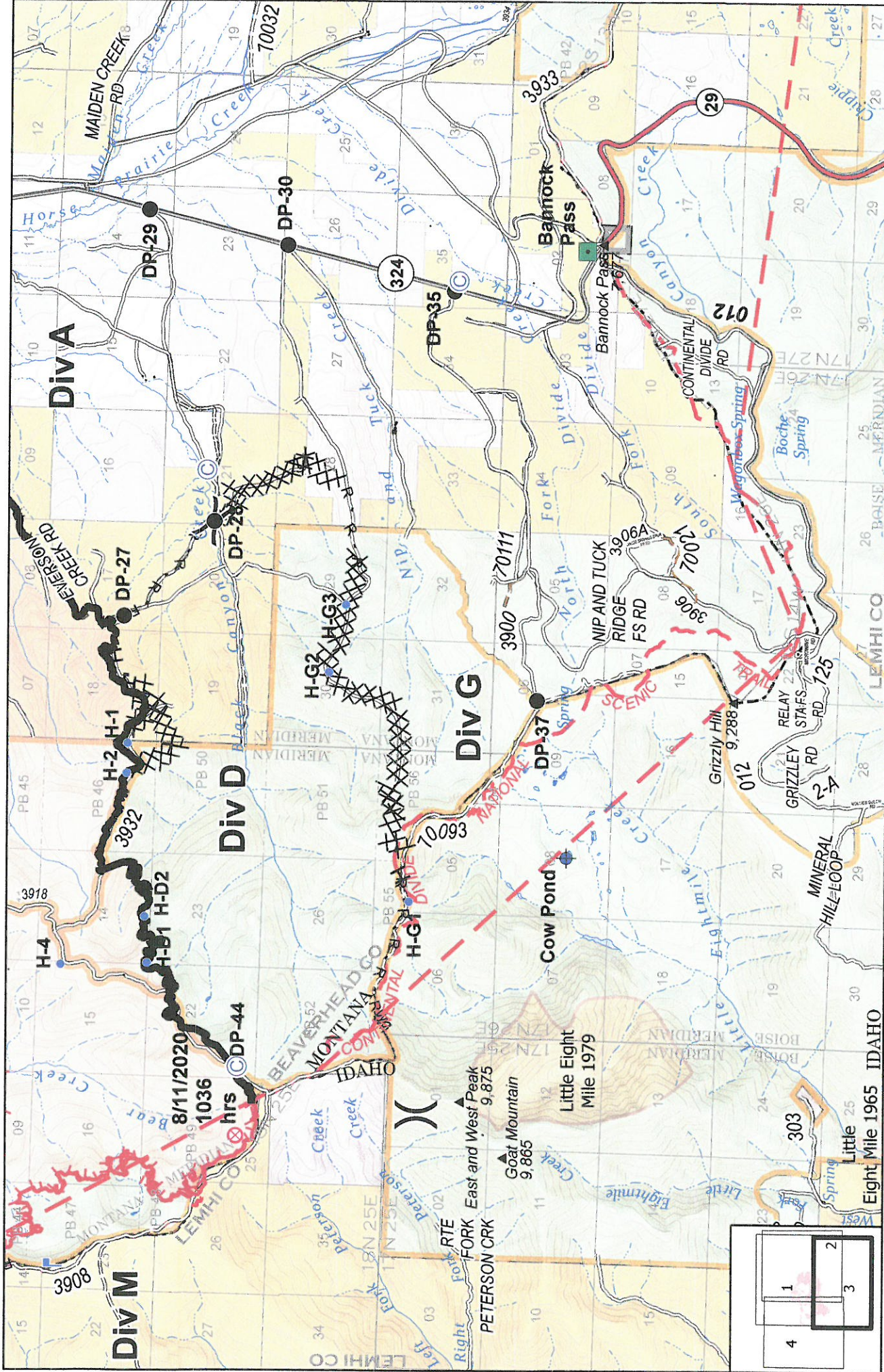
- ⊙ Spike Camp
- ⬇ Dip Site
- Drop Point
- ⚡ Mobile Weather Unit
- Ⓜ Staging Area
- Ⓜ Water Source
- Ⓜ Helibase
- Ⓜ Helispot
- Ⓜ Cell Tower
- Ⓜ Landmark
- Ⓜ Uncontrolled Fire Edge
- Ⓜ Contained Line
- Ⓜ Completed Dozer Line
- Ⓜ Completed Hand Line
- Ⓜ Road as Completed Line
- Ⓜ Radio Repeater Site
- Ⓜ Transmission Lines
- Ⓜ Wildfire Daily Fire Perimeter
- Ⓜ Forward Operating Base



**IAP**  
 Bear Creek  
 MT-BDF-006610  
 August 26, 2020  
 11,236 acres



- |                     |                  |                          |                                 |
|---------------------|------------------|--------------------------|---------------------------------|
| ⊙ Spike Camp        | ● Helispot       | — Uncontrolled Fire Edge | == Road Repair                  |
| ◆ Dip Site          | ⊙ Cell Tower     | — Contained Line         | ▭ Wildfire Daily Fire Perimeter |
| ● Drop Point        | ⊙ Staging Area   | ⊗ Completed Dozer Line   | Ⓜ Radio Repeater Site           |
| ⊕ First Aid Station | ⊙ Water Source   | H Completed Hand Line    | — Transmission Lines            |
| ⊕ Helibase          | ) Division Break | R Road as Completed Line | ▭ Forward Operating Base        |

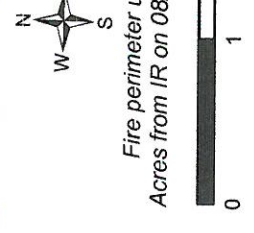


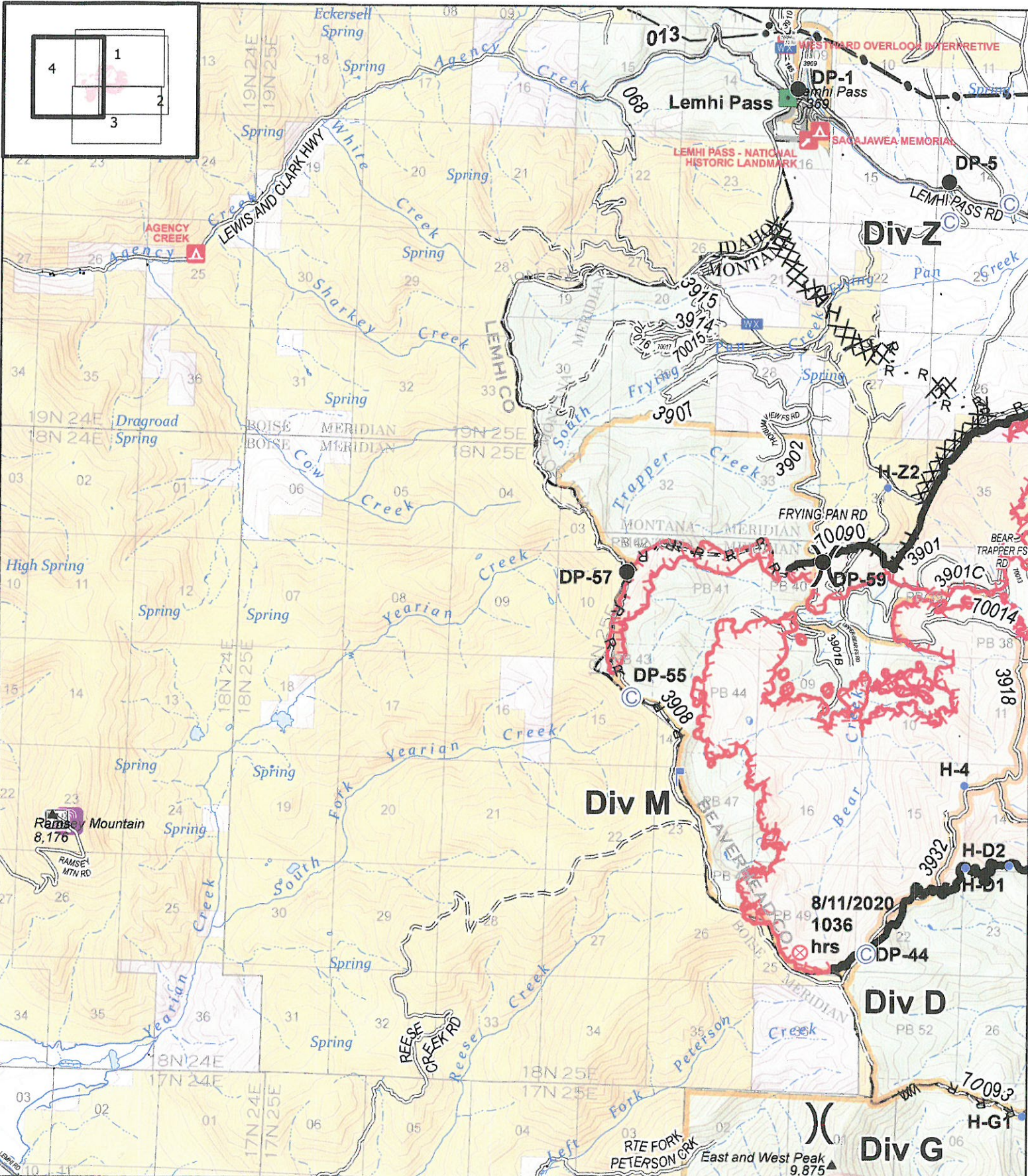
- Spike Camp
- Dip Site
- Drop Point
- Fire Origin
- Helispot
- Landmark
- Lookout
- Division Break
- Uncontrolled Fire Edge
- Contained Line
- Completed Dozer Line
- Completed Hand Line
- Road as Completed Line
- Fire Break Planned or Incomplete
- Road Repair
- Wildfire Daily Fire Perimeter

Fire perimeter updated from  
 Acres from IR on 08/24/2020 @ 0017

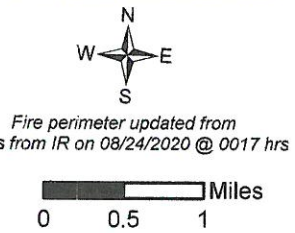
0 1 2 Miles

**IAP**  
 Bear Creek  
 MT-BDF-006610  
 August 26, 2020  
 11,236 acres

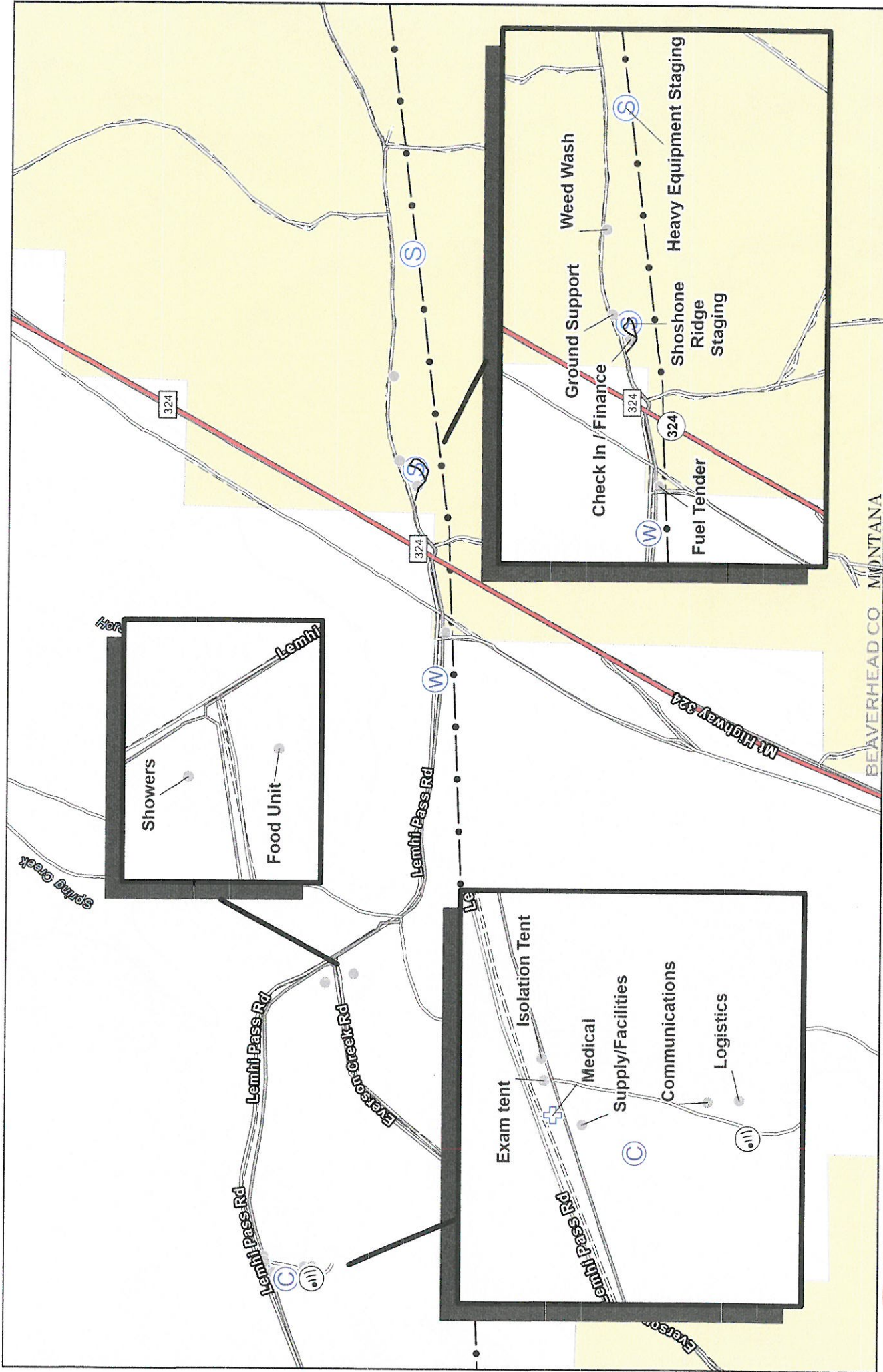




**IAP**  
**Bear Creek**  
**MT-BDF-006610**  
**August 26, 2020**  
**11,236 acres**



- Spike Camp
- Drop Point
- Fire Origin
- Helispot
- Landmark
- Lookout
- Mobile Weather Unit
- ) ( Division Break
- Uncontrolled Fire Edge
- Contained Line
- ⊗ Completed Dozer Line
- H Completed Hand Line
- R Road as Completed Line
- M Fire Break Planned or Incomplete
- Wildfire Daily Fire Perimeter
- Cellular Towers
- Radio Repeater Site



# Forward Operating Base

Bear Creek

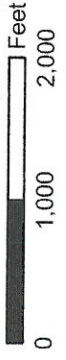
MT-BDF-006610

August 25, 2020

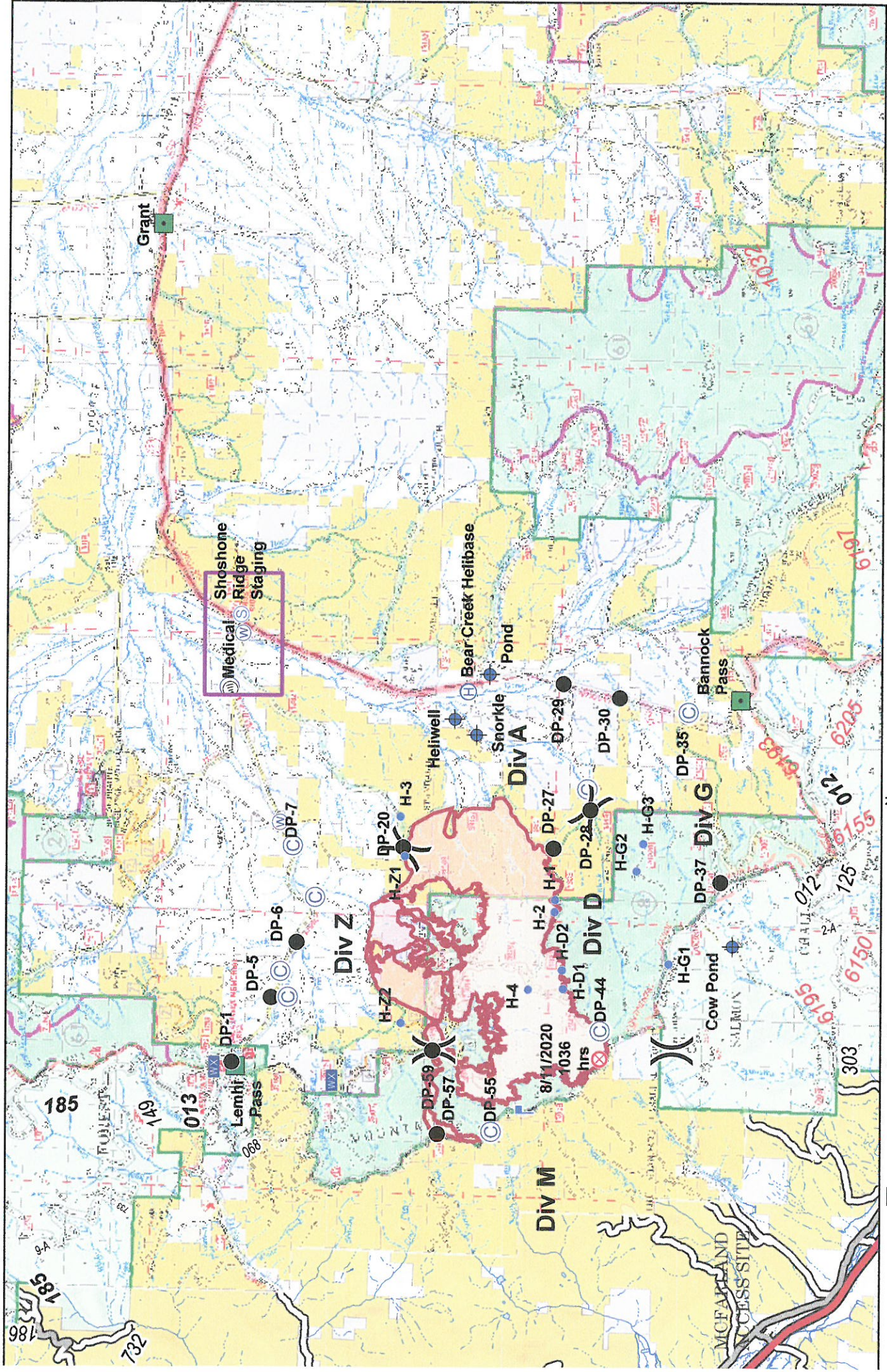
10,706 acres



Fire perimeter updated from  
Acres from IR on 08/24/2020 @ 0017 hrs



- Camping Area
- First Aid Station
- Cell Tower
- Staging Area
- Water Source
- Other
- Transmission Lines
- Bureau of Land Management



- Cell Tower
- Landmark
- Lookout
- Mobile Weather Unit
- Staging Area
- Water Source
- Division Break
- Forward Operating Base
- Gravel Road, Suitable for Passenger Car
- Dirt Road, Suitable for Passenger Car
- Road, Not Maintained for Passenger Car
- Highway
- Roads, Paved
- Roads, Other
- Spike Camp
- Dip Site
- Drop Point
- Fire Origin
- First Aid Station
- Helibase
- Helipoint

**Transportation**  
 Bear Creek  
 MT-BDF-006610  
 August 26, 2020  
 11,236 acres

Fire perimeter updated from  
 Acres from IR on 08/24/2020 @ 0017 hrs







## Medical Incident Report – 8 Line

**FOR A NON-EMERGENCY INCIDENT, WORK THROUGH CHAIN OF COMMAND TO REPORT AND TRANSPORT INJURED PERSONNEL AS NECESSARY.**

**FOR A MEDICAL EMERGENCY: IDENTIFY ON SCENE INCIDENT COMMANDER BY NAME AND POSITION AND ANNOUNCE "MEDICAL EMERGENCY" TO INITIATE RESPONSE FROM IMT COMMUNICATIONS/DISPATCH.**

**Use the following items to communicate situation to communications/dispatch.**

**1. CONTACT COMMUNICATIONS / DISPATCH** (Verify correct frequency prior to starting report)

*Ex: "Communications, Div. Alpha. Stand-by for Emergency Traffic."*

**2. INCIDENT STATUS:** Provide incident summary (including number of patients) and command structure.

*Ex: "Communications, I have a Red priority patient, unconscious, struck by a falling tree. Requesting air ambulance to Forest Road 1 at (Lat./Long.) This will be the Trout Meadow Medical, IC is TFLD Jones. EMT Smith is providing medical care."*

Severity of Emergency / Transport Priority	<input type="checkbox"/> <b>RED / PRIORITY 1</b> Life or limb threatening injury or illness. Evacuation need is <b>IMMEDIATE</b> <i>Ex: Unconscious, difficulty breathing, bleeding severely, 2° – 3° burns more than 4 palm sizes, heat stroke, disoriented.</i> <input type="checkbox"/> <b>YELLOW / PRIORITY 2</b> Serious Injury or illness. Evacuation may be <b>DELAYED</b> if necessary. <i>Ex: Significant trauma, unable to walk, 2° – 3° burns not more than 1-3 palm sizes.</i> <input type="checkbox"/> <b>GREEN / PRIORITY 3</b> Minor Injury or illness. Non-Emergency transport <i>Ex: Sprains, strains, minor heat-related illness.</i>	
Nature of Injury or Illness & Mechanism of Injury		Brief Summary of Injury or Illness <i>(Ex: Unconscious, Struck by Falling Tree)</i>
Transport Request		Air Ambulance / Short Haul/Hoist Ground Ambulance / Other
Patient Location		Descriptive Location & Lat. / Long. (WGS84)
Incident Name		Geographic Name + "Medical" <i>(Ex: Trout Meadow Medical)</i>
On-Scene Incident Commander		Name of on-scene IC of Incident within an Incident <i>(Ex: TFLD Jones)</i>
Patient Care		Name of Care Provider <i>(Ex: EMT Smith)</i>

**3. INITIAL PATIENT ASSESSMENT:** Complete this section for each patient as applicable (start with the most severe patient)

Patient Assessment:

See IRPG page 106

Treatment:

**4. TRANSPORT PLAN:**

Evacuation Location (if different): (Descriptive Location (drop point, intersection, etc.) or Lat. / Long.) Patient's ETA to Evacuation Location:

Helispot / Extraction Site Size and Hazards:

**5. ADDITIONAL RESOURCES / EQUIPMENT NEEDS:**

*Example: Paramedic/EMT, Crews, Immobilization Devices, AED, Oxygen, Trauma Bag, IV/Fluid(s), Splints, Rope rescue, Wheeled litter, HAZMAT, Extrication*

**6. COMMUNICATIONS: Identify State Air/Ground EMS Frequencies and Hospital Contacts as applicable**

Function	Channel Name/Number	Receive (RX)	Tone/NAC *	Transmit (TX)	Tone/NAC *
COMMAND					
AIR-TO-GRND					
TACTICAL					

**7. CONTINGENCY: Considerations:** If primary options fail, what actions can be implemented in conjunction with primary evacuation method? Be thinking ahead.

**8. ADDITIONAL INFORMATION:** Updates/Changes, etc.