


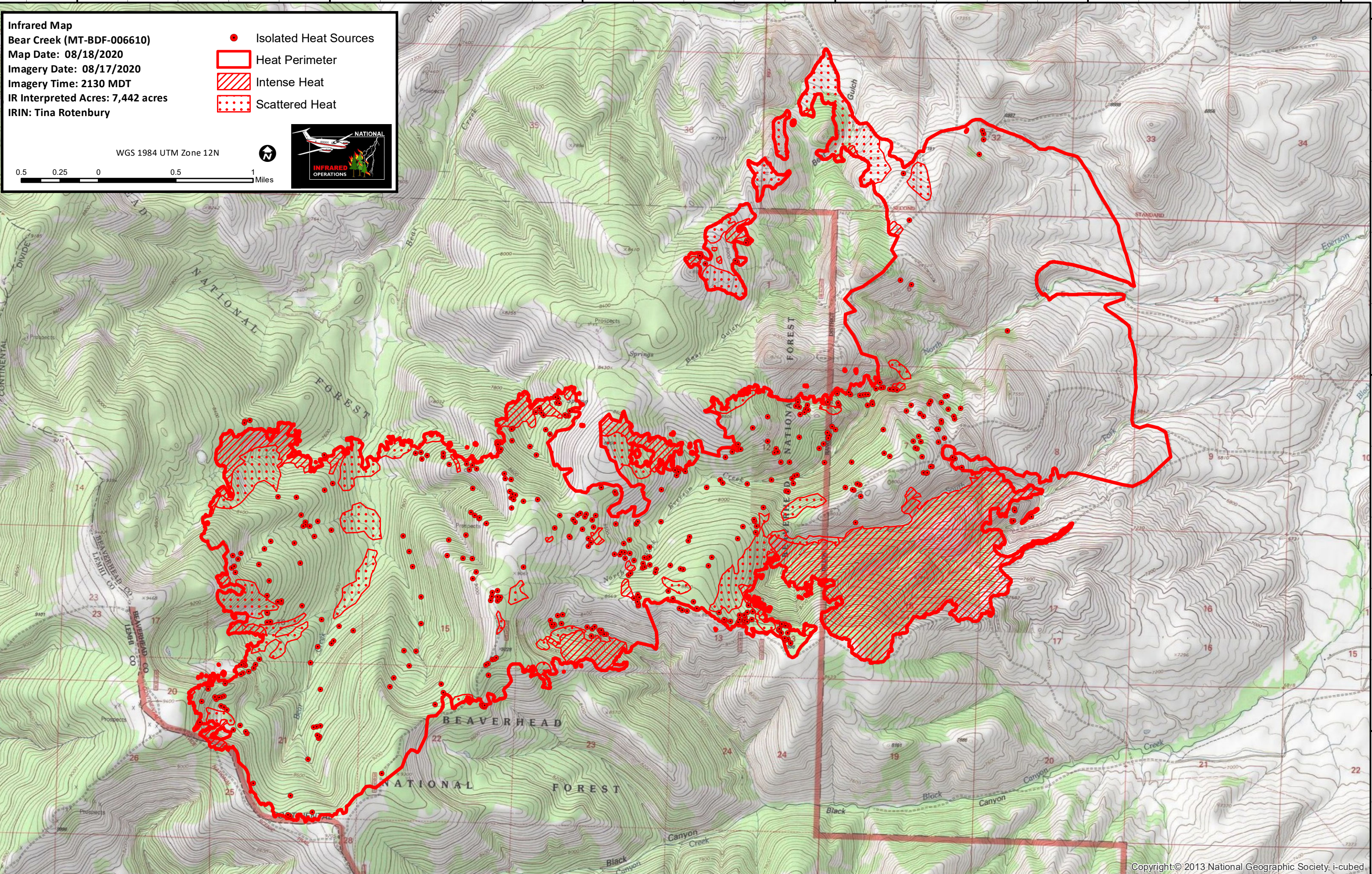


113°28'0"W 113°26'0"W 113°24'0"W 113°22'0"W 113°20'0"W 113°18'0"W

Infrared Map
 Bear Creek (MT-BDF-006610)
 Map Date: 08/18/2020
 Imagery Date: 08/17/2020
 Imagery Time: 2130 MDT
 IR Interpreted Acres: 7,442 acres
 IRIN: Tina Rotenbury

- Isolated Heat Sources
- Heat Perimeter
- Intense Heat
- Scattered Heat

WGS 1984 UTM Zone 12N

113°28'0"W 113°26'0"W 113°24'0"W 113°22'0"W 113°20'0"W 113°18'0"W

44°54'0"N

44°52'0"N

44°54'0"N

44°52'0"N