

113°28'0"W

113°26'0"W

113°24'0"W

113°22'0"W

113°20'0"W

113°18'0"W

44°56'0"N

44°54'0"N

44°52'0"N

44°56'0"N

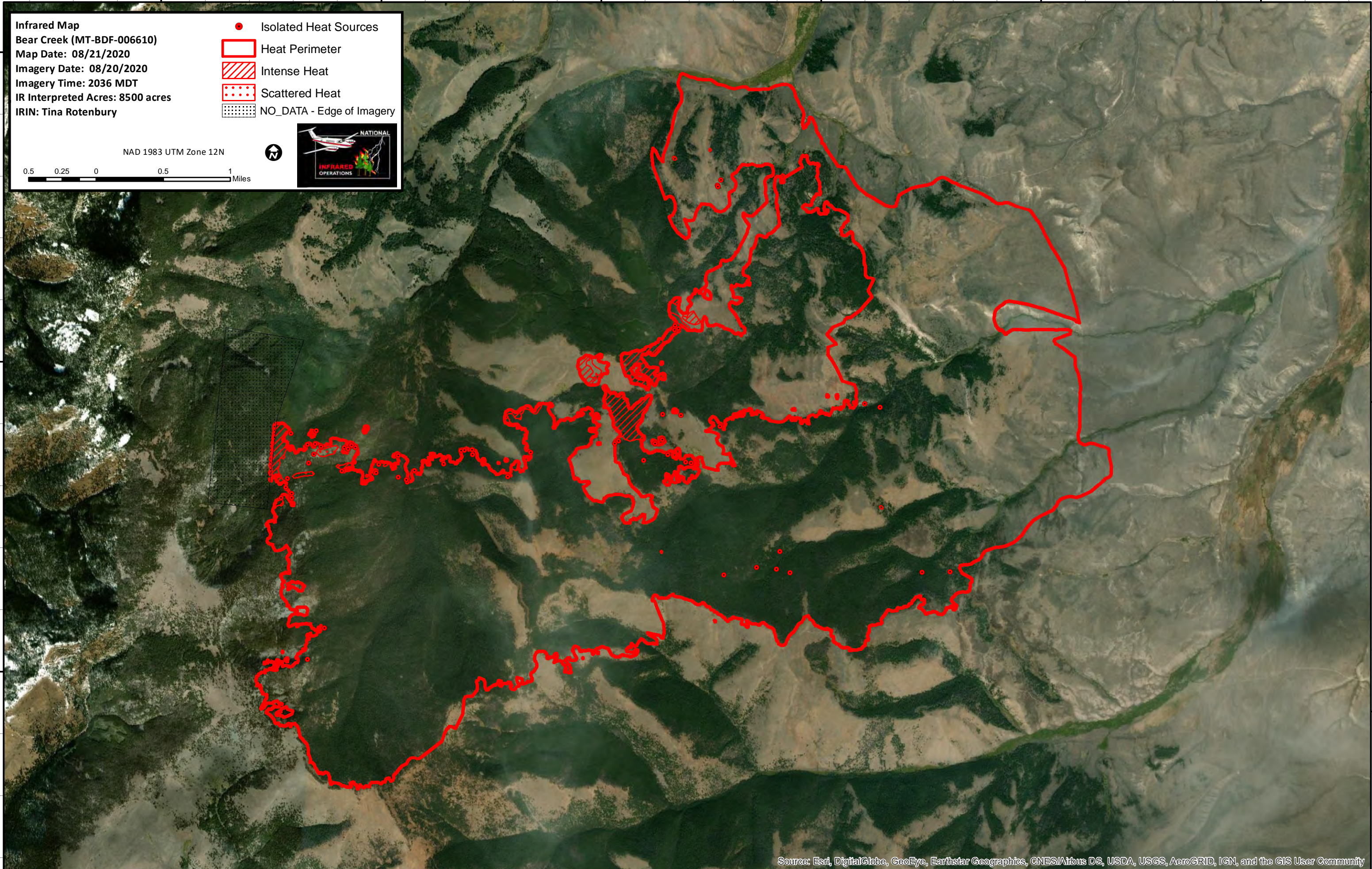
44°54'0"N

44°52'0"N

**Infrared Map**  
 Bear Creek (MT-BDF-006610)  
 Map Date: 08/21/2020  
 Imagery Date: 08/20/2020  
 Imagery Time: 2036 MDT  
 IR Interpreted Acres: 8500 acres  
 IRIN: Tina Rotenbury

- Isolated Heat Sources
- Heat Perimeter
- Intense Heat
- Scattered Heat
- NO\_DATA - Edge of Imagery

NAD 1983 UTM Zone 12N



113°28'0"W

113°26'0"W

113°24'0"W

113°22'0"W

113°20'0"W

113°18'0"W