

113°30'0"W 113°28'0"W 113°26'0"W 113°24'0"W 113°22'0"W 113°20'0"W 113°18'0"W

44°56'0"N
44°54'0"N
44°52'0"N


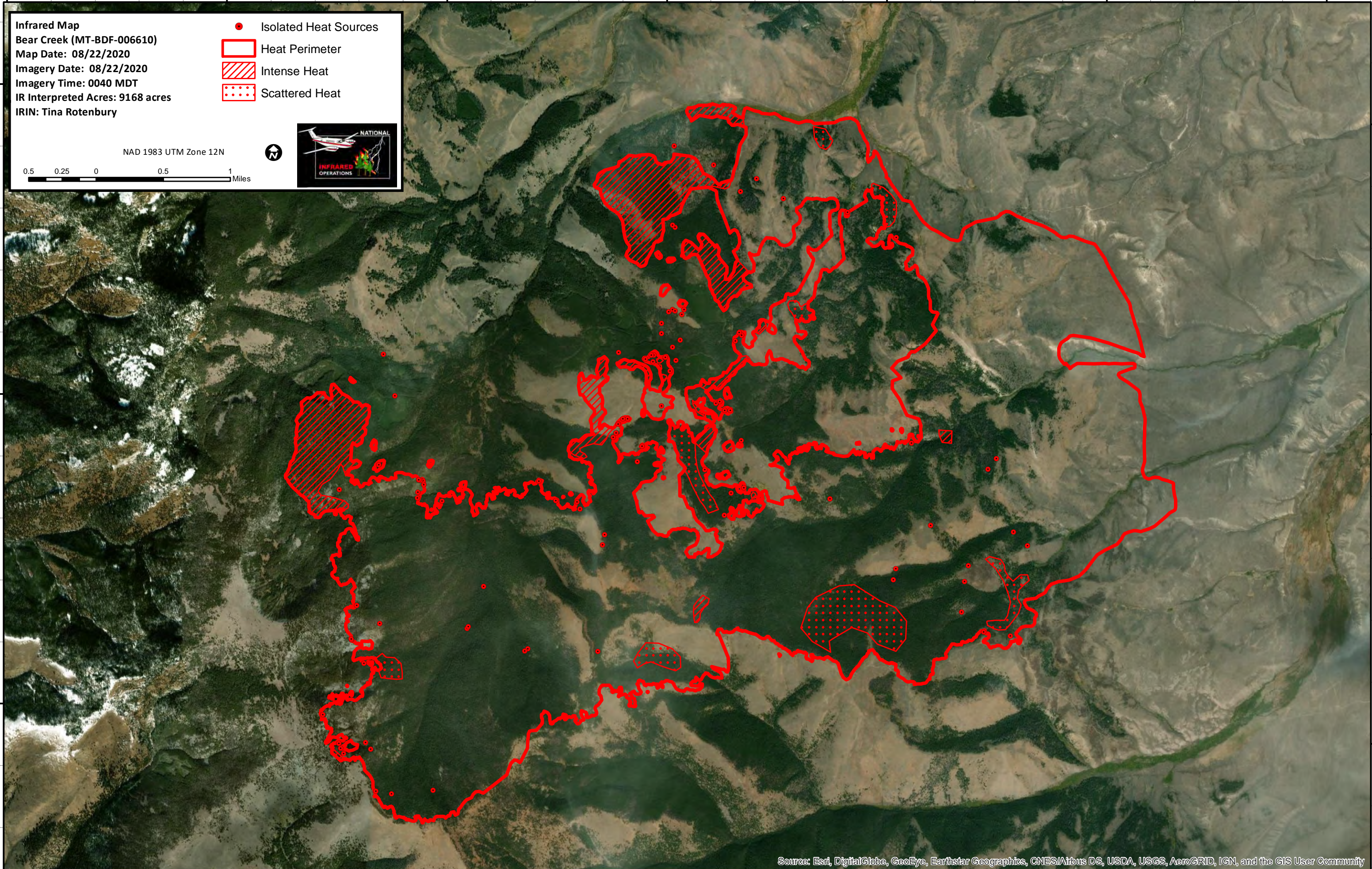
44°56'0"N
44°54'0"N
44°52'0"N

Infrared Map
 Bear Creek (MT-BDF-006610)
 Map Date: 08/22/2020
 Imagery Date: 08/22/2020
 Imagery Time: 0040 MDT
 IR Interpreted Acres: 9168 acres
 IRIN: Tina Rotenbury

- Isolated Heat Sources
- Heat Perimeter
- Intense Heat
- Scattered Heat

NAD 1983 UTM Zone 12N

0.5 0.25 0 0.5 1 Miles

Source: Esri, DigitalGlobe, GeoEye, Earthstar Geographics, CNES/Airbus DS, USDA, USGS, AeroGRID, IGN, and the GIS User Community

113°28'0"W 113°26'0"W 113°24'0"W 113°22'0"W 113°20'0"W 113°18'0"W