

## INFRARED INTERPRETER'S DAILY LOG

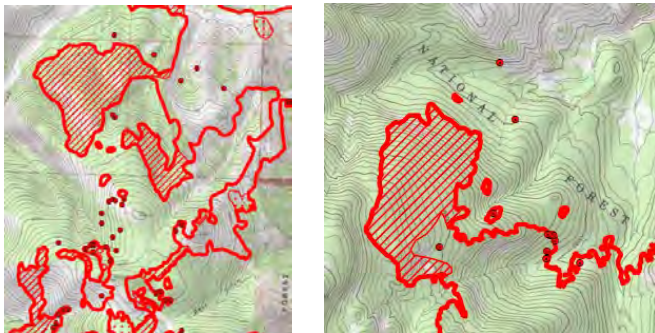
<b>Incident Name:</b> Bear Creek MT-BDF-006610	<b>IR Interpreter(s):</b> Tina Rotenbury tina.rotenbury@usda.gov	<b>Local Dispatch Phone:</b> Dillon Dispatch 406-683-3975	<b>Interpreted Size:</b> 9168 Acres Mapped (using UTM12)  <b>Growth last period:</b> 668 Acres
<b>Flight Time:</b> 0040 MDT	<b>Interpreter(s) location:</b> Russellville, AR	<b>GACC IR Liaison:</b> Tim Stauffer	<b>National Coordinator:</b> Jan Johnson
<b>Flight Date:</b> 08/22/2020	<b>Interpreter(s) Phone:</b> 479-886-0878	<b>GACC IR Liaison Phone:</b> 406-529-6366	<b>National Coord. Phone:</b> 505-301-8167
<b>Ordered By:</b> Kristen Sanders (SITL) 208-559-2129	<b>A Number:</b> 54	<b>Aircraft/Scanner System:</b> N149Z / Phoenix	<b>Pilots/Techs:</b> Pilots: Don/Carl Tech: Kelli Gammons
<b>IRIN Comments on imagery:</b> Good alignment and clear.		<b>Weather at time of flight</b> Clear	<b>Flight Objective:</b> Map heat perimeter, intense, scattered, and isolated heat
<b>Date and Time Imagery Received by Interpreter:</b> August 22, 2020 @ 0259 MDT		<b>Type of media for final product:</b> pdf map, IR log, KMZ and shapefiles	
<b>Date and Time Products Delivered to Incident:</b> August 22, 2020 @ 0436 MDT		<b>Digital files sent to:</b> <a href="https://ftp.nifc.gov/public/incident_specific_data/n_rockies/2020_fires/2020_Bear_Creek/IR/">https://ftp.nifc.gov/public/incident_specific_data/n_rockies/2020_fires/2020_Bear_Creek/IR/</a> Send Text to 208-559-2129 when posted to FTP	

**Comments /notes on tonight's mission and this interpretation:**

Began interp with NIFS Daily Fire Perimeter 20200821\_BearCreek\_DailyFirePerimeter  
Acres and growth shown above are based off previous IR perimeter not Daily Wildfire perimeter from NIFS.

Perimeter growth along the northwest and north edges where burnout has occurred. Intense heat in these areas as well. Pockets of intense heat and scattered within the perimeter.

Several isolated heat sources outside NE perimeter near Bear Creek where burnout is occurring and the NW perimeter about 1/2 mile north of perimeter.



There are a few points of isolated heat along the perimeter edge and interior near the south border with an increase in pockets of scattered heat.

Isolated heat source along edge of SW perimeter near the county line.