


113°32'0"W 113°30'0"W 113°28'0"W 113°26'0"W 113°24'0"W 113°22'0"W 113°20'0"W

Infrared Map
Bear Creek (MT-BDF-006610)
 Map Date: 08/26/2020
 Imagery Date: 08/26/2020
 Imagery Time: 0025 MDT
 IR Interpreted Acres: 11,590 acres
 IRIN: Tina Rotenbury

- Isolated Heat Sources
- ▭ Heat Perimeter
- ▨ Intense Heat
- ⋯ Scattered Heat

NAD 1983 UTM Zone 12N

0.5 0.25 0 0.5 1 Miles



44°56'0"N

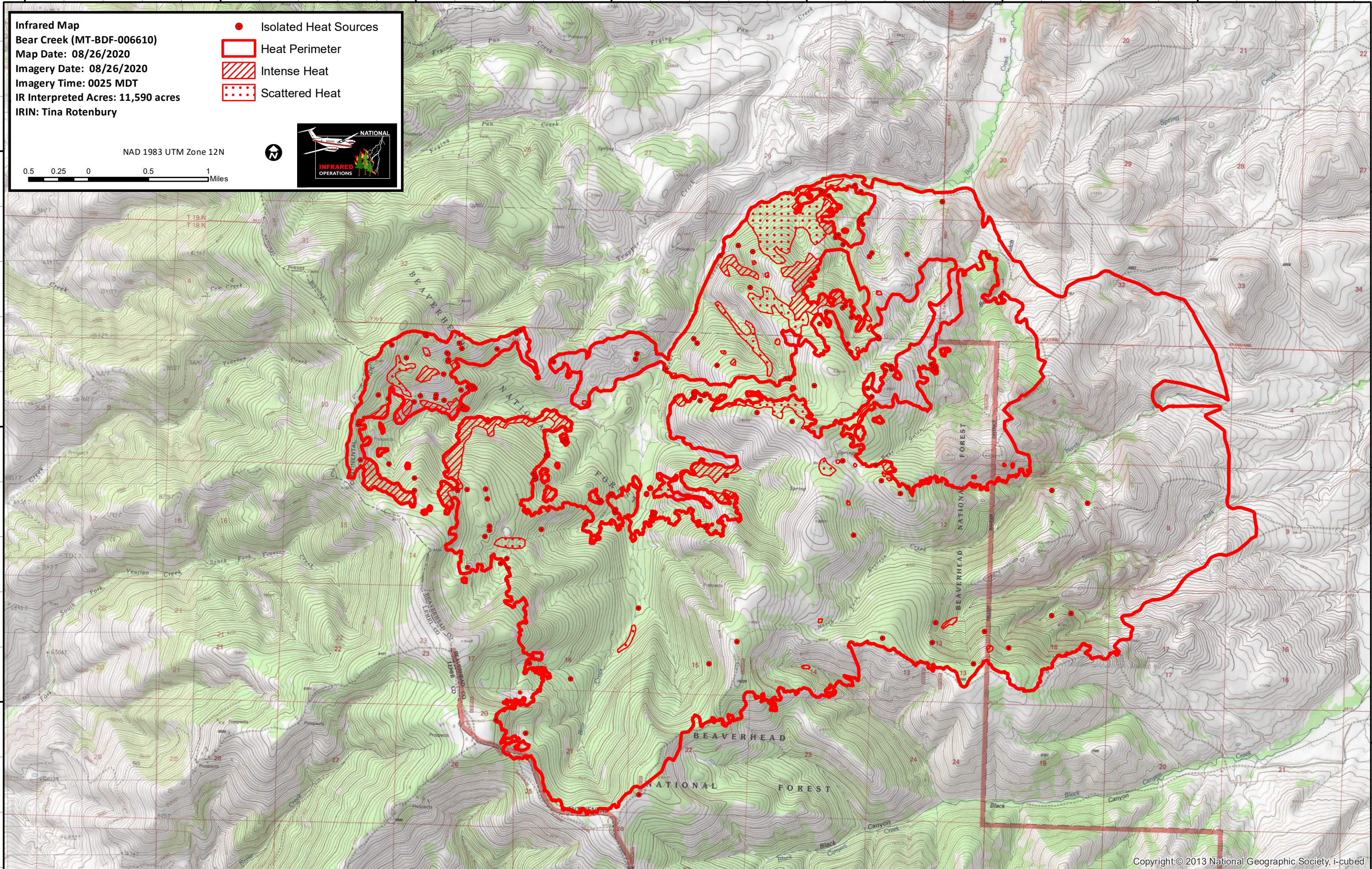
44°54'0"N

44°52'0"N

44°56'0"N

44°54'0"N

44°52'0"N



113°30'0"W 113°28'0"W 113°26'0"W 113°24'0"W 113°22'0"W 113°20'0"W 113°18'0"W