

113°30'0"W

113°28'0"W

113°26'0"W

113°24'0"W

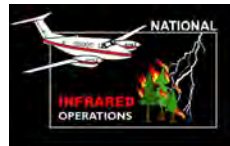
113°22'0"W

113°20'0"W

Infrared Map
 Bear Creek (MT-BDF-006610)
 Map Date: 08/27/2020
 Imagery Date: 08/26/2020
 Imagery Time: 2004 MDT
 IR Interpreted Acres: 11,614 acres
 IRIN: Tina Rotenbury

- Isolated Heat Sources
- Heat Perimeter
- Intense Heat
- Scattered Heat
- Cloud Cover

NAD 1983 UTM Zone 12N



44°56'0"N

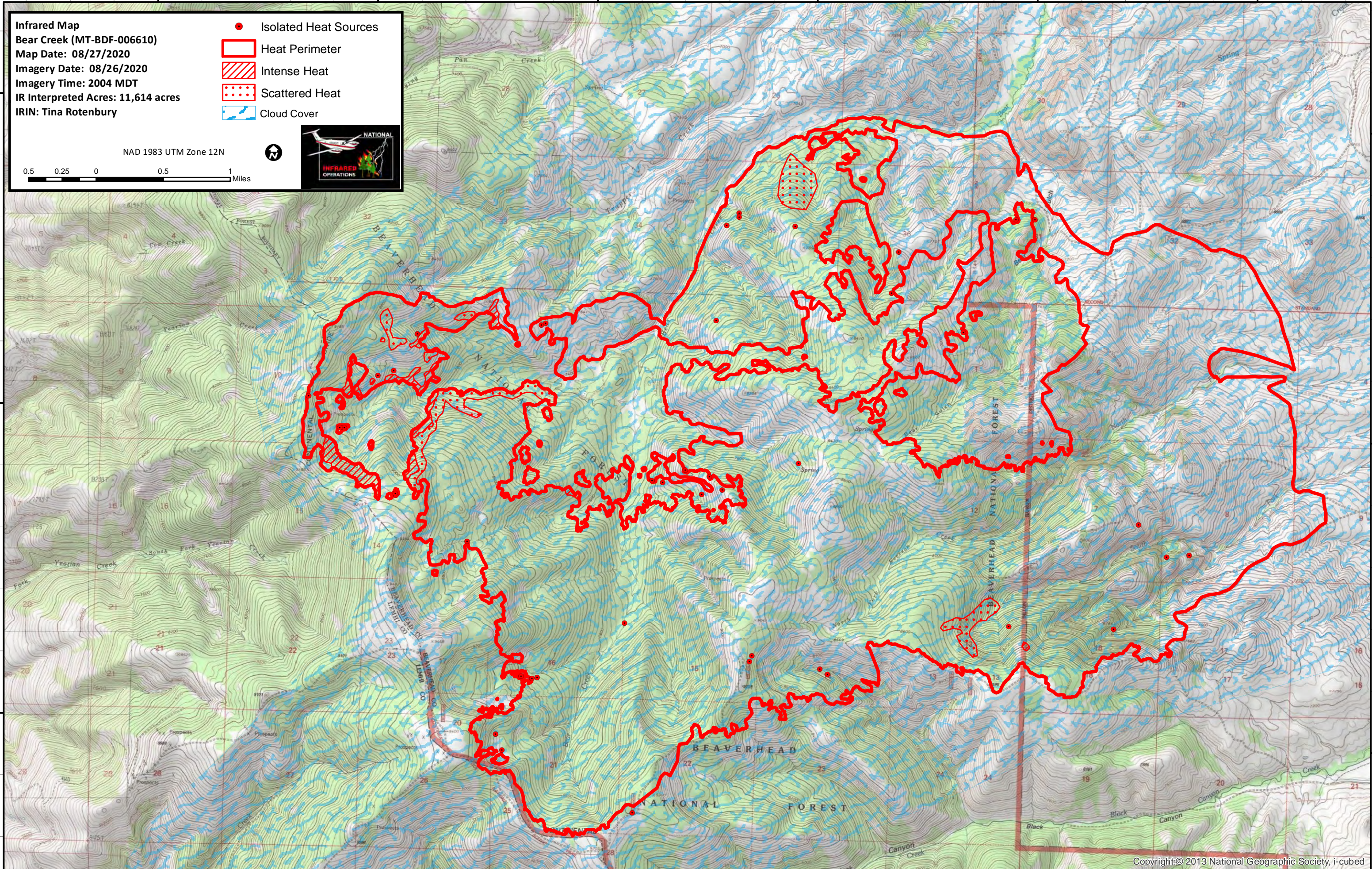
44°54'0"N

44°52'0"N

44°56'0"N

44°54'0"N

44°52'0"N



113°30'0"W

113°28'0"W

113°26'0"W

113°24'0"W

113°22'0"W

113°20'0"W