

113°30'0"W

113°28'0"W

113°26'0"W

113°24'0"W

113°22'0"W

113°20'0"W

44°56'0"N

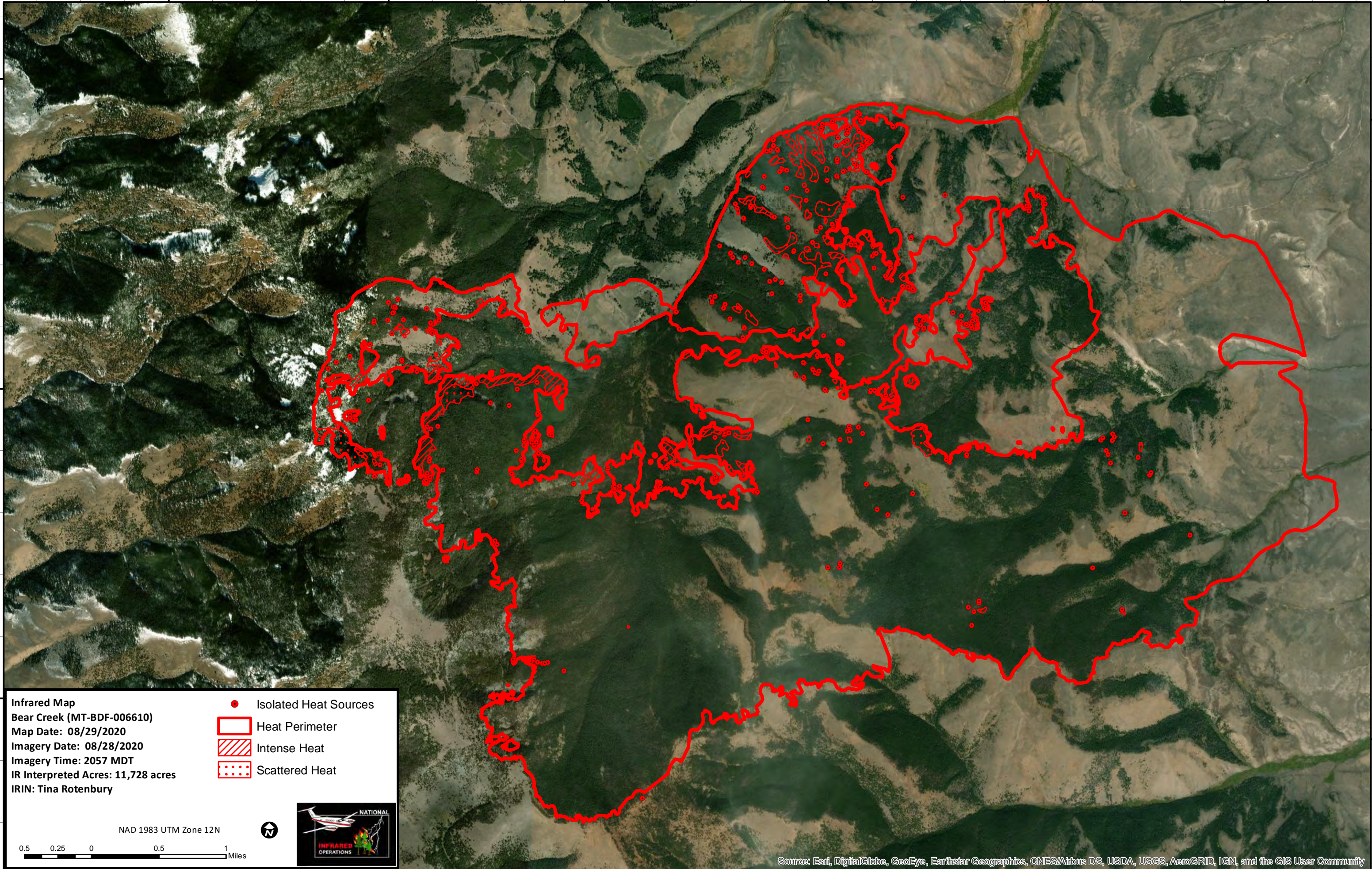
44°54'0"N

44°52'0"N

44°56'0"N

44°54'0"N

44°52'0"N

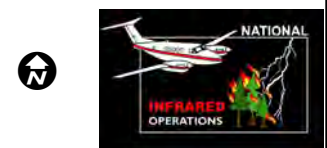


Infrared Map
 Bear Creek (MT-BDF-006610)
 Map Date: 08/29/2020
 Imagery Date: 08/28/2020
 Imagery Time: 2057 MDT
 IR Interpreted Acres: 11,728 acres
 IRIN: Tina Rotenbury

- Isolated Heat Sources
- Heat Perimeter
- Intense Heat
- Scattered Heat

NAD 1983 UTM Zone 12N

0.5 0.25 0 0.5 1 Miles



Source: Esri, DigitalGlobe, GeoEye, Earthstar Geographics, CNES/Airbus DS, USDA, USGS, AeroGRID, IGN, and the GIS User Community