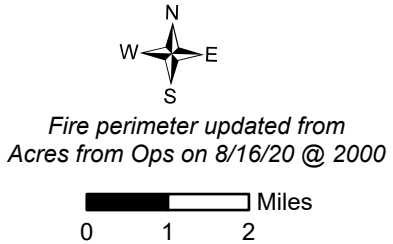
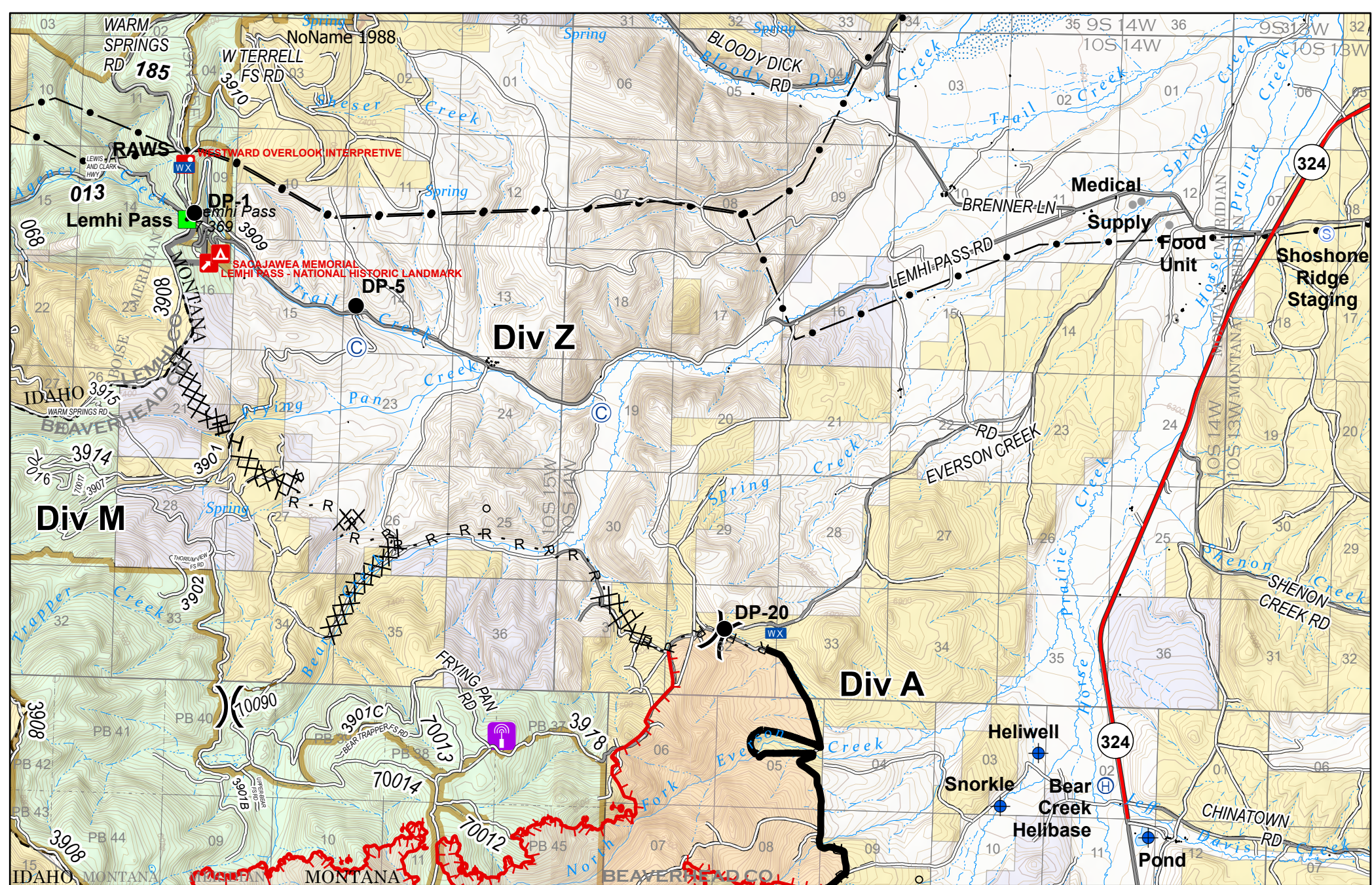


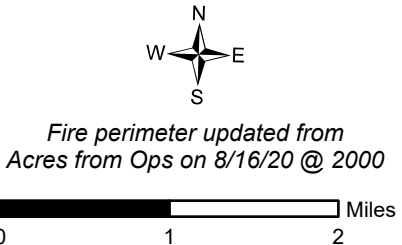
IAP Index
 Bear Creek
 MT-BDF-006610
 August 17, 2020
 6,110 acres



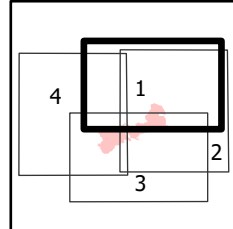
- Uncontrolled Fire Edge
- Contained Line
- Completed Dozer Line
- Completed Hand Line
- Road as Completed Line
- Wildfire Daily Fire Perimeter
- + Dip Site
- Drop Point
- Helibase
- Landmark
- Mobile Weather Unit
- Staging Area
- Other
-) Division Break

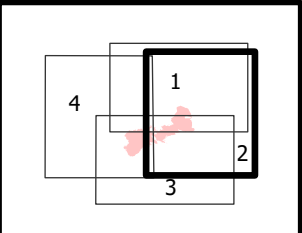
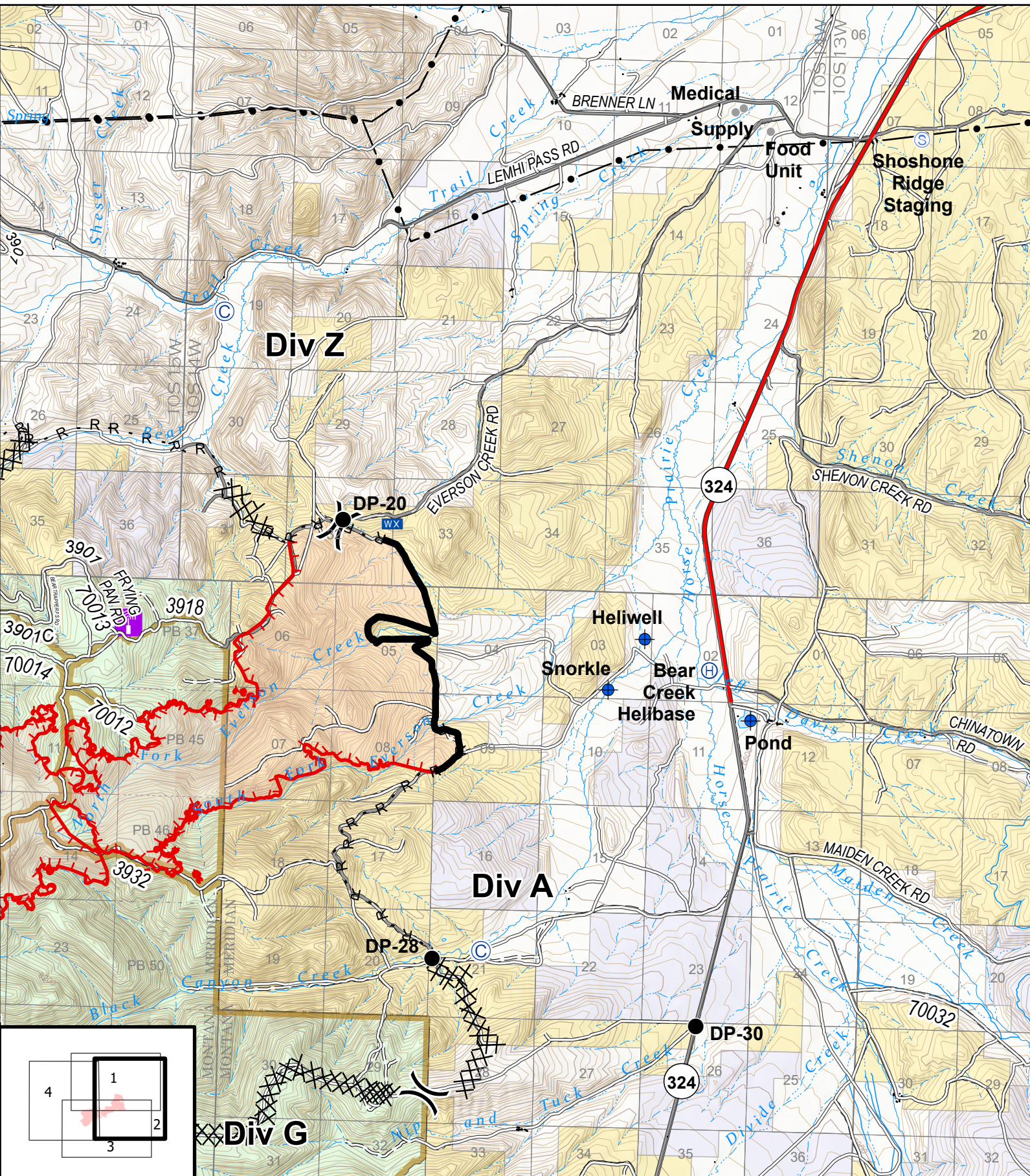


IAP
Bear Creek
MT-BDF-006610
August 17, 2020
6,110 acres



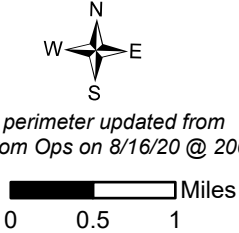
- ⊙ Spike Camp
- ⊕ Dip Site
- Drop Point
- ⊕ Helibase
- Landmark
- ☒ Mobile Weather Unit
- ⊙ Staging Area
- Other
-) Division Break
- Uncontrolled Fire Edge
- Contained Line
- ⊗ Completed Dozer Line
- H Completed Hand Line
- R Road as Completed Line
- 📡 Radio Repeater Site
- Transmission Lines
- 🔴 Wildfire Daily Fire Perimeter



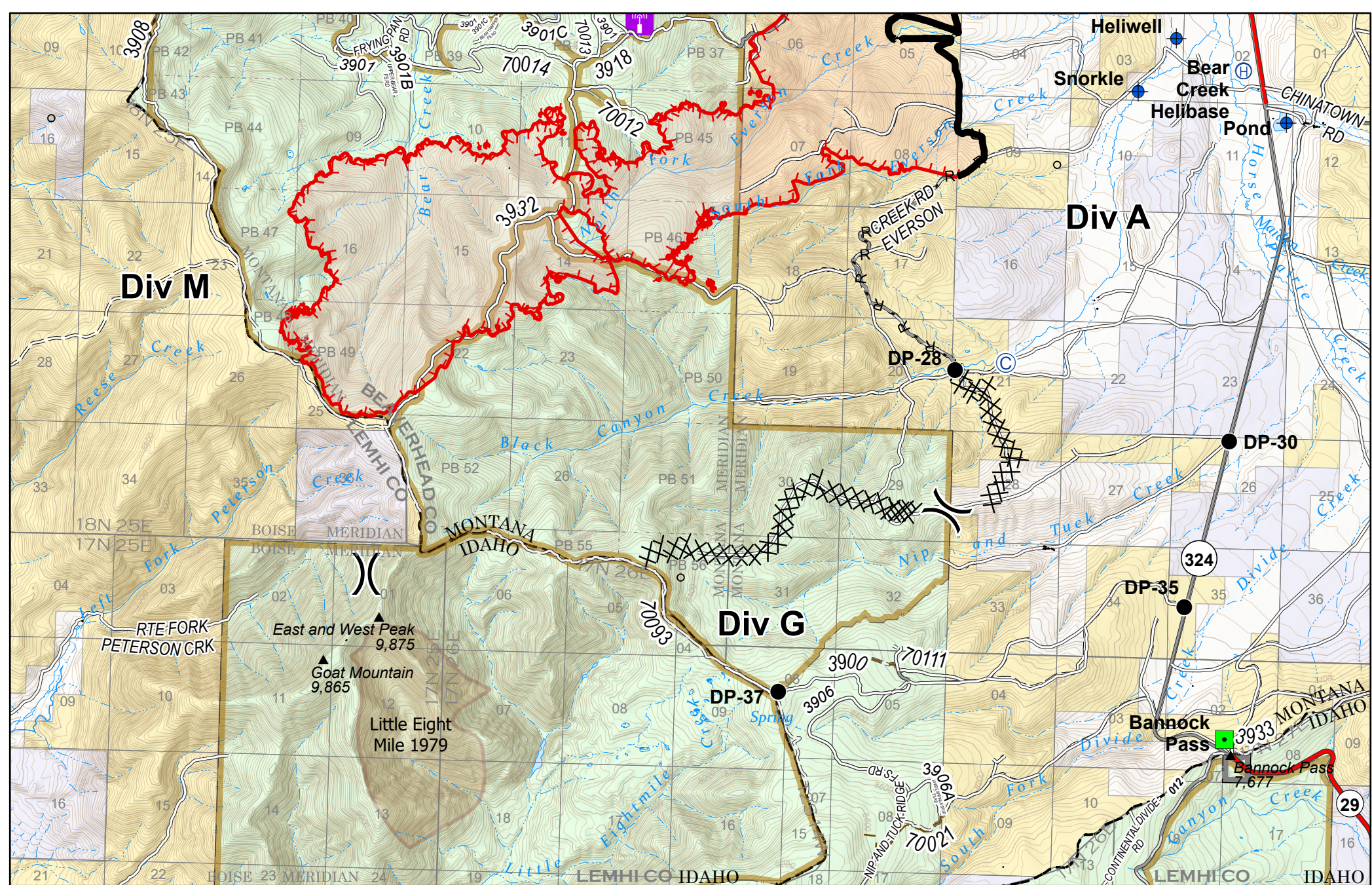


IAP
 Bear Creek
 MT-BDF-006610
 August 17, 2020
 6,110 acres

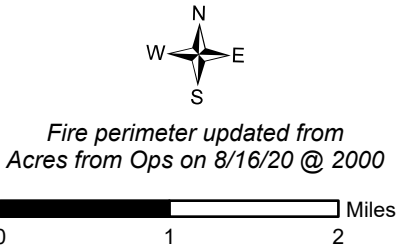
Fire perimeter updated from Acres from Ops on 8/16/20 @ 2000



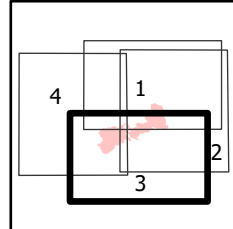
- ⊙ Spike Camp
- ⊙ Staging Area
- ⊙ Other
- ⊙ Division Break
- ⊙ Helibase
- ⊙ Uncontrolled Fire Edge
- ⊙ Contained Line
- ⊙ Completed Dozer Line
- R Road as Completed Line
- ⊙ Wildfire Daily Fire Perimeter
- ⊙ Radio Repeater Site
- ⊙ Transmission Lines

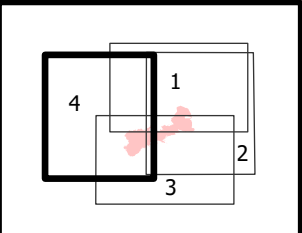
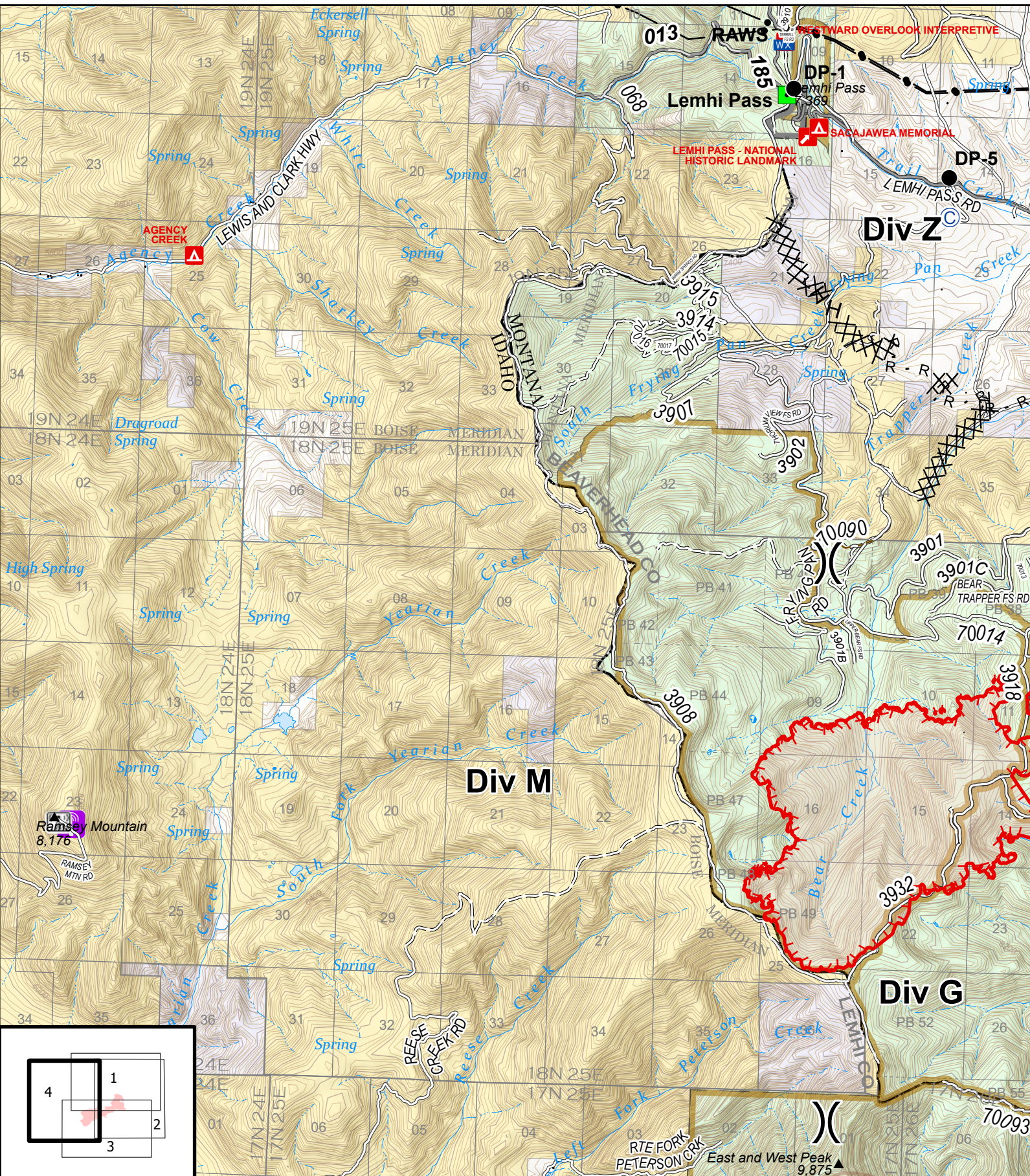


IAP
Bear Creek
MT-BDF-006610
August 17, 2020
6,110 acres



- ⊙ Spike Camp
- ◆ Dip Site
- Drop Point
- ⊕ Helibase
- Landmark
-) (Division Break
- ┌─┐ Uncontrolled Fire Edge
- ▬ Contained Line
- XX Completed Dozer Line
- R Road as Completed Line
- 📡 Radio Repeater Site
- ▭ Wildfire Daily Fire Perimeter





IAP
 Bear Creek
 MT-BDF-006610
 August 17, 2020
 6,110 acres

Fire perimeter updated from
 Acres from Ops on 8/16/20 @ 2000

0 0.5 1 Miles

- ⊙ Spike Camp
- Drop Point
- Landmark
- Ⓜ Mobile Weather Unit
-) Division Break
- ▬ Uncontrolled Fire Edge
- ⊗ Completed Dozer Line
- H Completed Hand Line
- R Road as Completed Line
- ▭ Wildfire Daily Fire Perimeter
- 📶 Cellular Towers
- 📻 Radio Repeater Site
- Transmission Lines