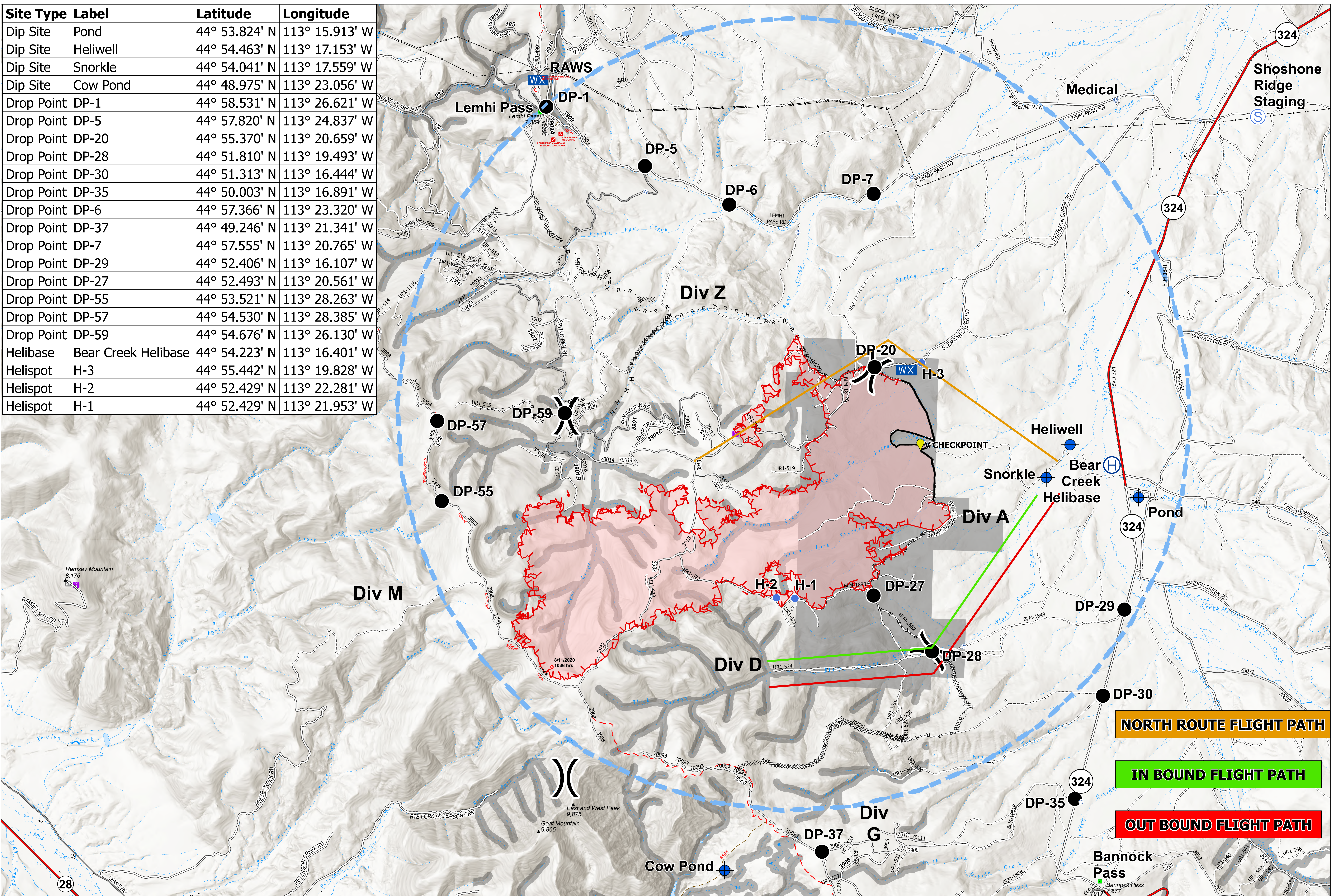
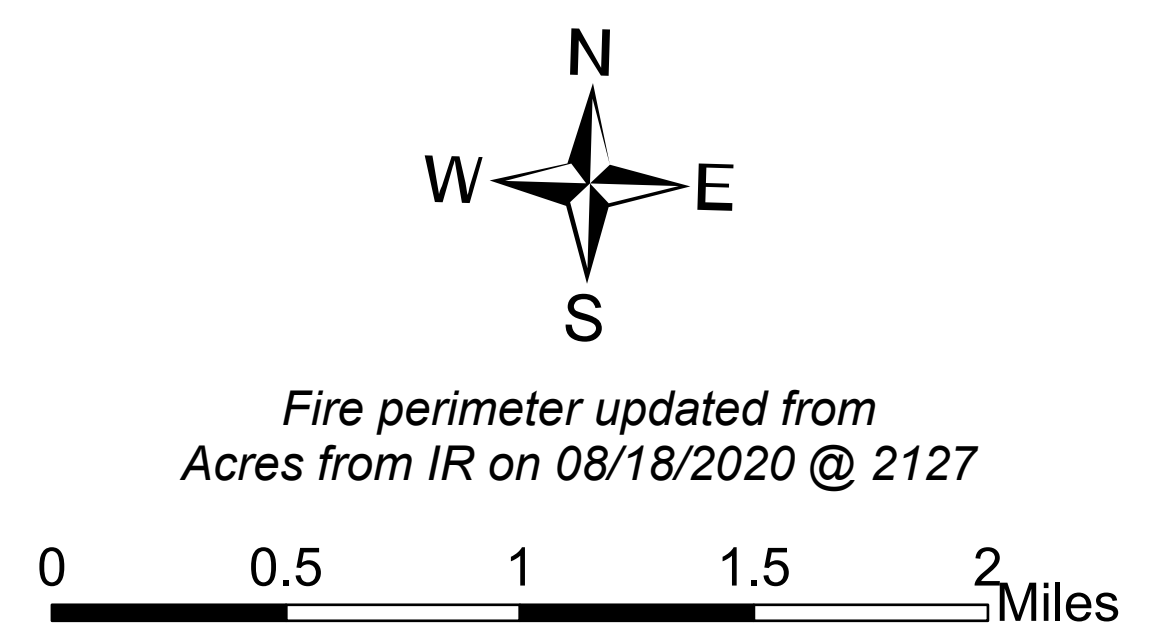


Site Type	Label	Latitude	Longitude
Dip Site	Pond	44° 53.824' N	113° 15.913' W
Dip Site	Heliwell	44° 54.463' N	113° 17.153' W
Dip Site	Snorkle	44° 54.041' N	113° 17.559' W
Dip Site	Cow Pond	44° 48.975' N	113° 23.056' W
Drop Point	DP-1	44° 58.531' N	113° 26.621' W
Drop Point	DP-5	44° 57.820' N	113° 24.837' W
Drop Point	DP-20	44° 55.370' N	113° 20.659' W
Drop Point	DP-28	44° 51.810' N	113° 19.493' W
Drop Point	DP-30	44° 51.313' N	113° 16.444' W
Drop Point	DP-35	44° 50.003' N	113° 16.891' W
Drop Point	DP-6	44° 57.366' N	113° 23.320' W
Drop Point	DP-37	44° 49.246' N	113° 21.341' W
Drop Point	DP-7	44° 57.555' N	113° 20.765' W
Drop Point	DP-29	44° 52.406' N	113° 16.107' W
Drop Point	DP-27	44° 52.493' N	113° 20.561' W
Drop Point	DP-55	44° 53.521' N	113° 28.263' W
Drop Point	DP-57	44° 54.530' N	113° 28.385' W
Drop Point	DP-59	44° 54.676' N	113° 26.130' W
Helibase	Bear Creek Helibase	44° 54.223' N	113° 16.401' W
Helispot	H-3	44° 55.442' N	113° 19.828' W
Helispot	H-2	44° 52.429' N	113° 22.281' W
Helispot	H-1	44° 52.429' N	113° 21.953' W



Air Ops
 Bear Creek
 MT-BDF-006610
 August 19, 2020
 7,543 acres



- (C) Camp
- (D) Dip Site
- (DP) Drop Point
- (FO) Fire Origin
- (FAS) First Aid Station
- (H) Helibase
- (I) Helispot
- (IA) Internet Access
- (L) Landmark
- (M) Mobile Weather Unit
- (SA) Staging Area
- (W) Water Source
- (DB) Division Break
- (UFE) Uncontrolled Fire Edge
- (CL) Contained Line
- (CDL) Completed Dozer Line
- (CHL) Completed Hand Line
- (R-R) Road as Completed Line
- (WDFP) Wildfire Daily Fire Perimeter
- (TFR) TFR - Frequency 118.6
- (H) Highway
- (R) Roads, Paved
- (RO) Roads, Other
- (GR) Gravel Road, Suitable for Passenger Car
- (DR) Dirt Road, Suitable for Passenger Car
- (USFS) USFS Trails
- (CN) Continental Divide National Scenic Trail
- (CP) Campground
- (HIFLD) HIFLD Cellular Towers
- (RS) Radio Repeater Site
- (TL) Transmission Lines
- (RA) Retardant Avoidance Area

