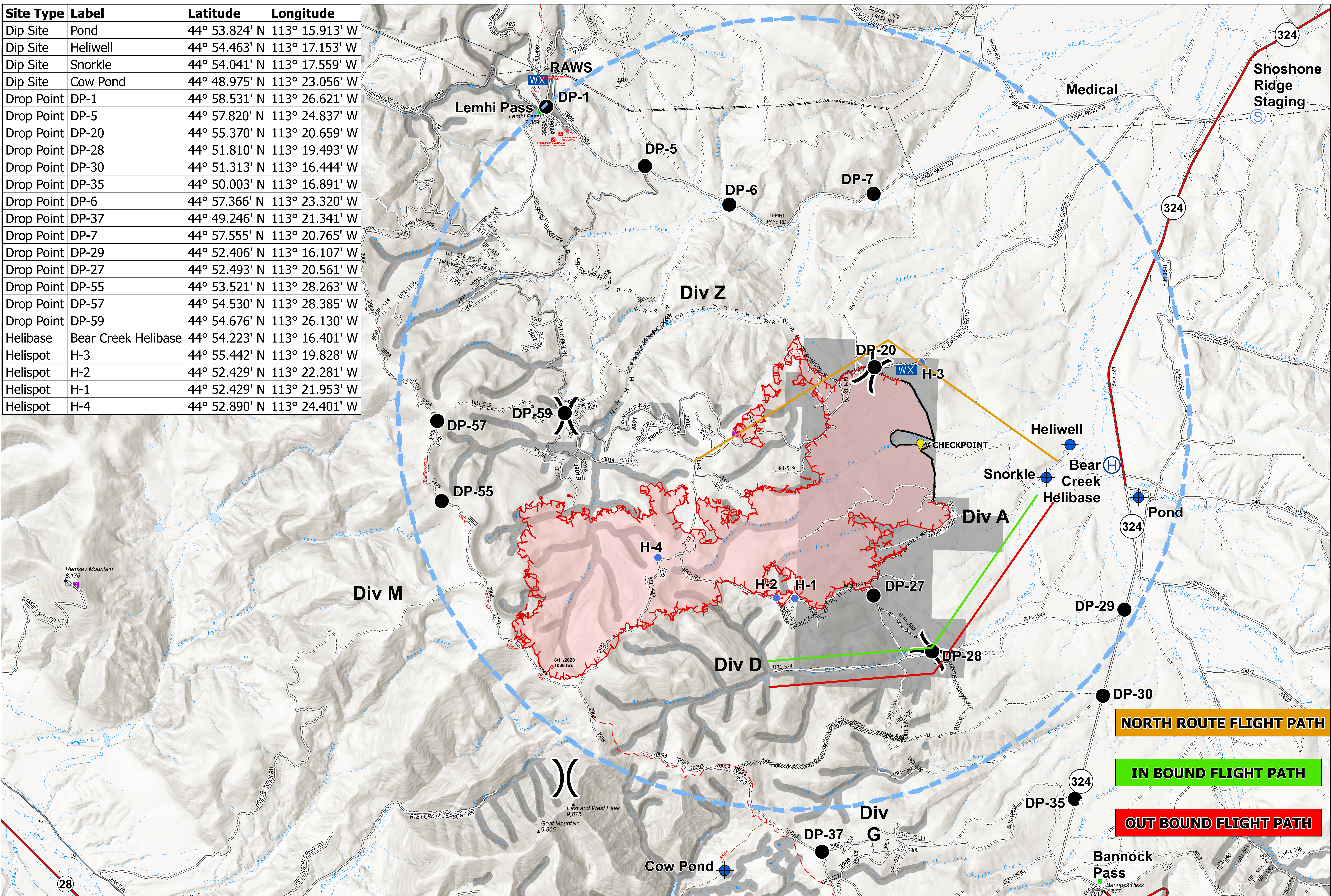
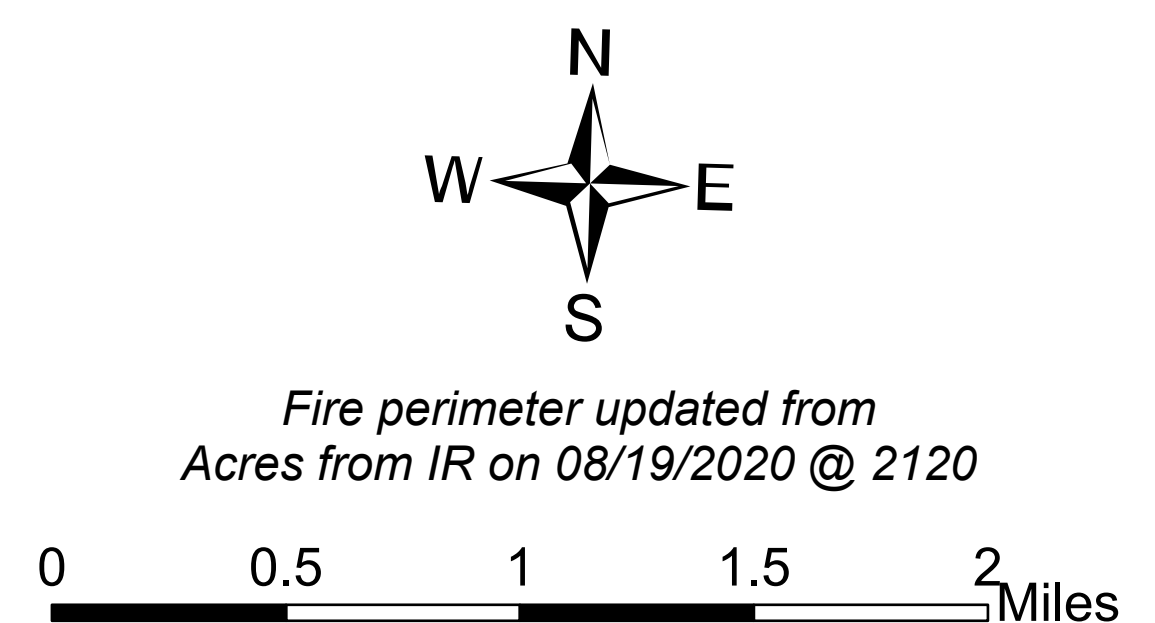


Site Type	Label	Latitude	Longitude
Dip Site	Pond	44° 53.824' N	113° 15.913' W
Dip Site	Heliwell	44° 54.463' N	113° 17.153' W
Dip Site	Snorkle	44° 54.041' N	113° 17.559' W
Dip Site	Cow Pond	44° 48.975' N	113° 23.056' W
Drop Point	DP-1	44° 58.531' N	113° 26.621' W
Drop Point	DP-5	44° 57.820' N	113° 24.837' W
Drop Point	DP-20	44° 55.370' N	113° 20.659' W
Drop Point	DP-28	44° 51.810' N	113° 19.493' W
Drop Point	DP-30	44° 51.313' N	113° 16.444' W
Drop Point	DP-35	44° 50.003' N	113° 16.891' W
Drop Point	DP-6	44° 57.366' N	113° 23.320' W
Drop Point	DP-37	44° 49.246' N	113° 21.341' W
Drop Point	DP-7	44° 57.555' N	113° 20.765' W
Drop Point	DP-29	44° 52.406' N	113° 16.107' W
Drop Point	DP-27	44° 52.493' N	113° 20.561' W
Drop Point	DP-55	44° 53.521' N	113° 28.263' W
Drop Point	DP-57	44° 54.530' N	113° 28.385' W
Drop Point	DP-59	44° 54.676' N	113° 26.130' W
Helibase	Bear Creek Helibase	44° 54.223' N	113° 16.401' W
Helispot	H-3	44° 55.442' N	113° 19.828' W
Helispot	H-2	44° 52.429' N	113° 22.281' W
Helispot	H-1	44° 52.429' N	113° 21.953' W
Helispot	H-4	44° 52.890' N	113° 24.401' W



**Air Ops**  
 Bear Creek  
 MT-BDF-006610  
 August 20, 2020  
 7,563 acres



- (C) Camp
- (D) Dip Site
- (●) Drop Point
- (X) Fire Origin
- (+) First Aid Station
- (H) Helibase
- (●) Helispot
- (I) Internet Access
- (■) Landmark
- (WX) Mobile Weather Unit
- (S) Staging Area
- (W) Water Source
- ( )) Division Break
- (—) Uncontrolled Fire Edge
- (—) Contained Line
- (XXXX) Completed Dozer Line
- (H - H) Completed Hand Line
- (R - R - R) Road as Completed Line
- (■) Wildfire Daily Fire Perimeter
- (---) TFR - Frequency 118.6
- (—) Highway
- (—) Roads, Paved
- (—) Roads, Other
- (—) USFS Trails
- (—) Continental Divide National Scenic Trail
- (---) Road, Not Maintained for Passenger Car
- (—) Gravel Road, Suitable for Passenger Car
- (—) Dirt Road, Suitable for Passenger Car
- (▲) USGS Mountain Features
- (■) Structure Footprints
- (▲) Campground
- (■) HIFLD Cellular Towers
- (■) Radio Repeater Site
- (---) Transmission Lines
- (■) Retardant Avoidance Area



8/20/2020 0529  
 North American 1983 Datum. LatLong Grid