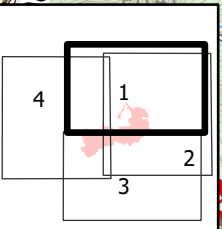
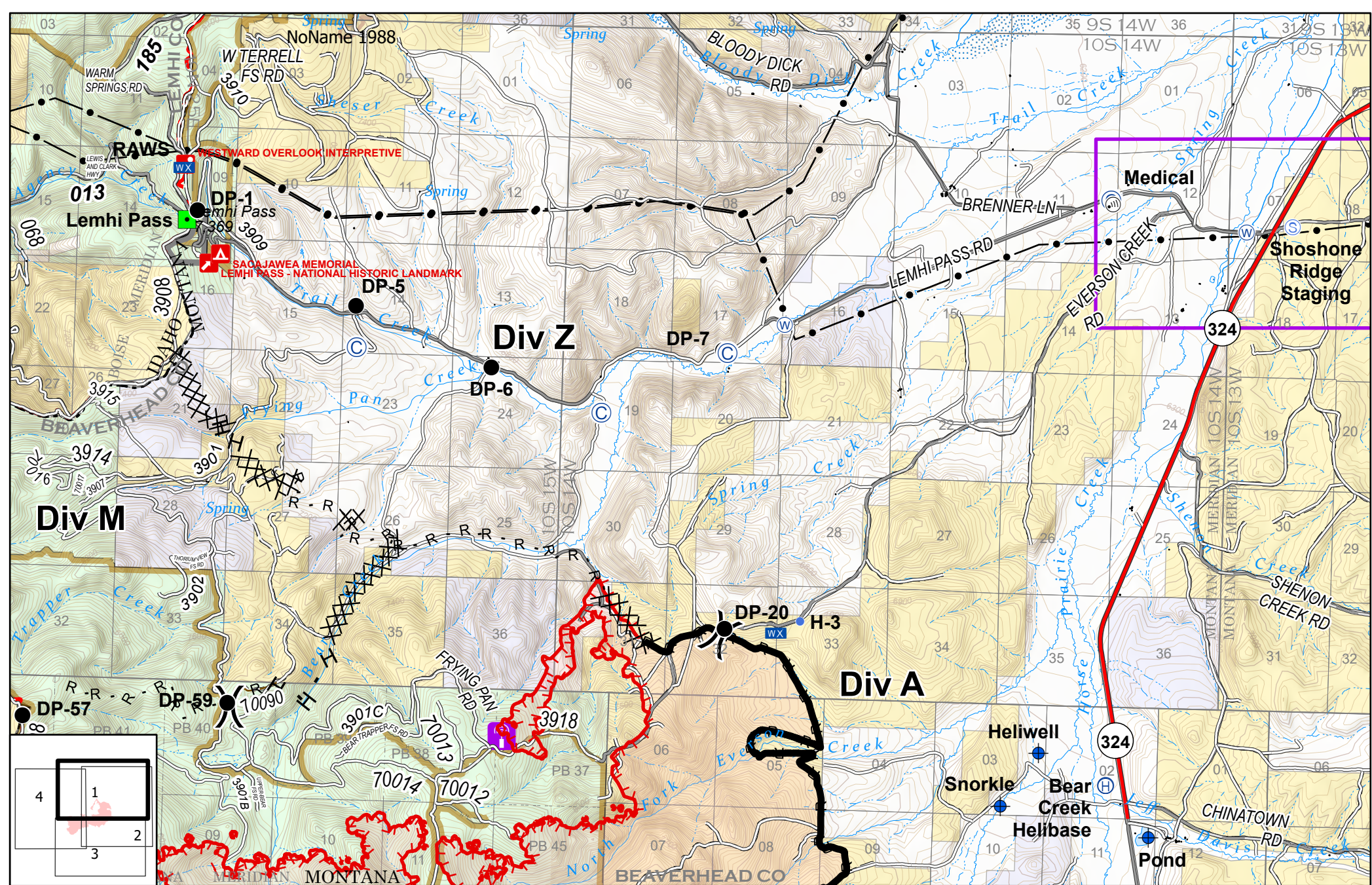


**IAP Index**  
 Bear Creek  
 MT-BDF-006610  
 August 21, 2020  
 7,860 acres

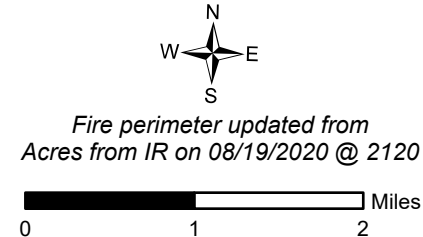
Fire perimeter updated from  
 Acres from IR on 08/19/2020 @ 2120

0 1 2 Miles

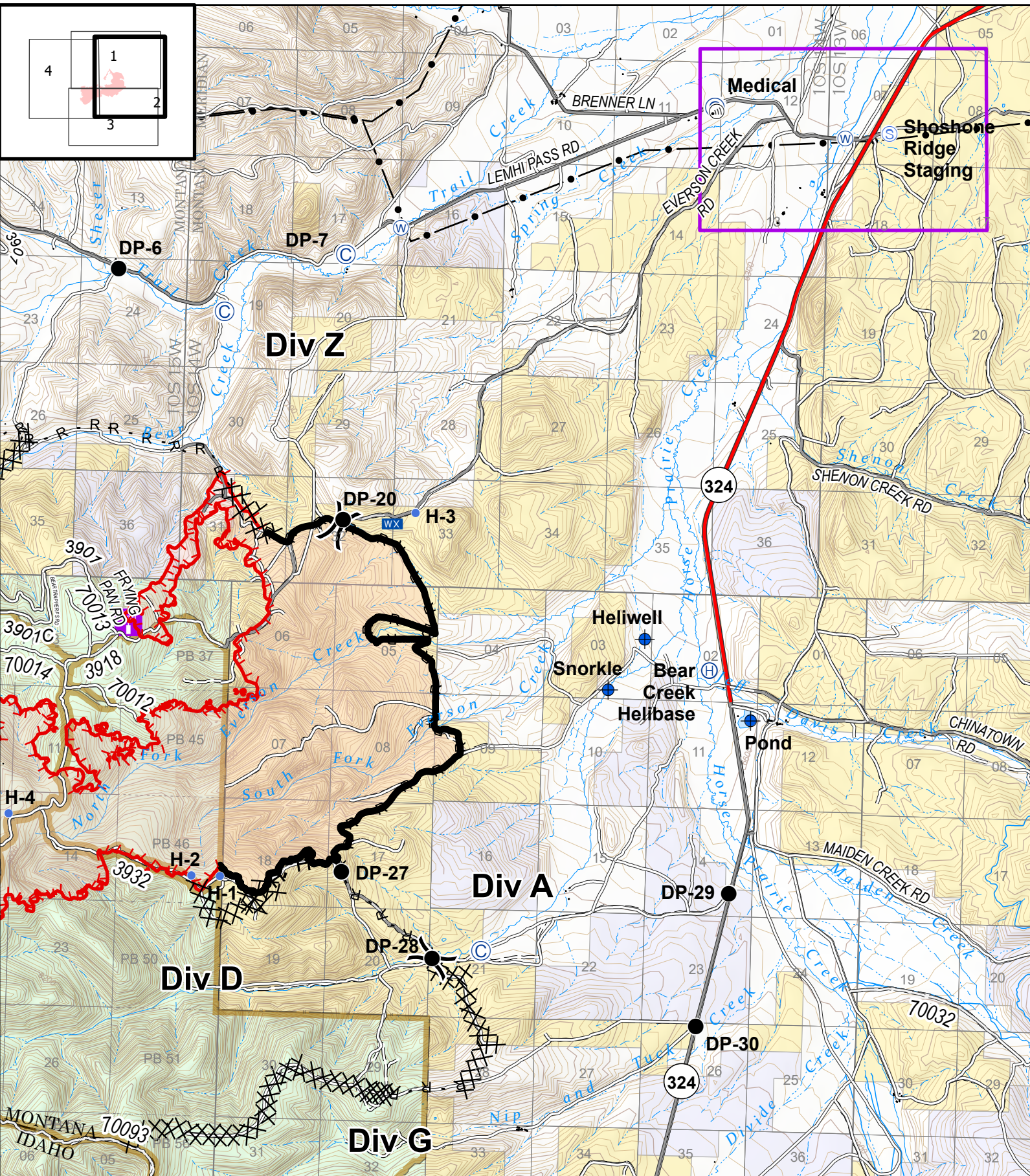
- Uncontrolled Fire Edge
- + Dip Site
- Landmark
- Contained Line
- Drop Point
- + Mobile Weather Unit
- Completed Dozer Line
- Fire Origin
- Staging Area
- H Completed Hand Line
- + First Aid Station
- + Water Source
- R Road as Completed Line
- + Helibase
- Other
- Wildfire Daily Fire Perimeter
- + Helispot
- Division Break
- + Cell Tower
- Forward Operating Base



**IAP**  
**Bear Creek**  
 MT-BDF-006610  
 August 21, 2020  
 7,860 acres

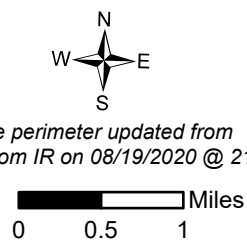


- |                     |                       |                          |                                 |
|---------------------|-----------------------|--------------------------|---------------------------------|
| Ⓢ Spike Camp        | Ⓜ Cell Tower          | 🔴 Uncontrolled Fire Edge | 📻 Radio Repeater Site           |
| Ⓡ Dip Site          | 🟩 Landmark            | ⬛ Contained Line         | — Transmission Lines            |
| ● Drop Point        | 📶 Mobile Weather Unit | ⌘ Completed Dozer Line   | 🟡 Wildfire Daily Fire Perimeter |
| Ⓡ First Aid Station | 📍 Staging Area        | H Completed Hand Line    | 🟪 Forward Operating Base        |
| Ⓡ Helibase          | 🌊 Water Source        | R Road as Completed Line |                                 |
| • Helispot          | ⌘ Division Break      |                          |                                 |

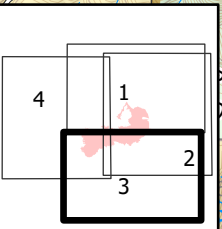
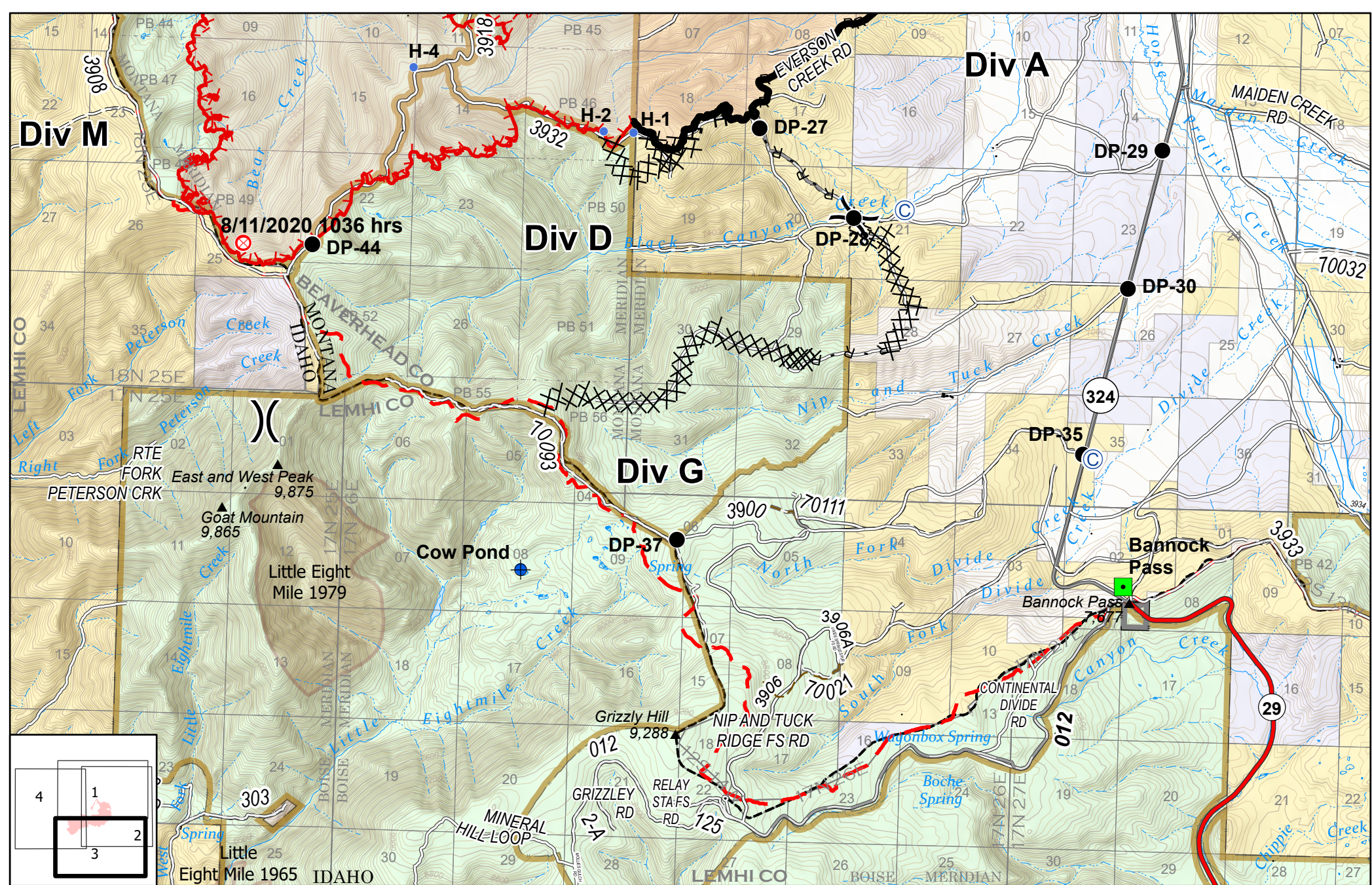


**IAP**  
 Bear Creek  
 MT-BDF-006610  
 August 21, 2020  
 7,860 acres

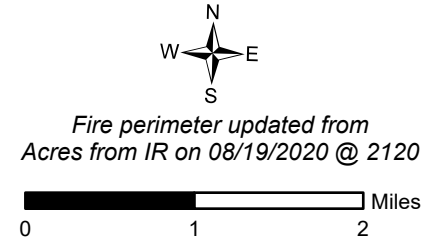
*Fire perimeter updated from  
 Acres from IR on 08/19/2020 @ 2120*



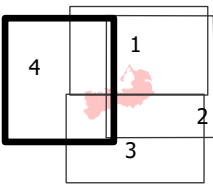
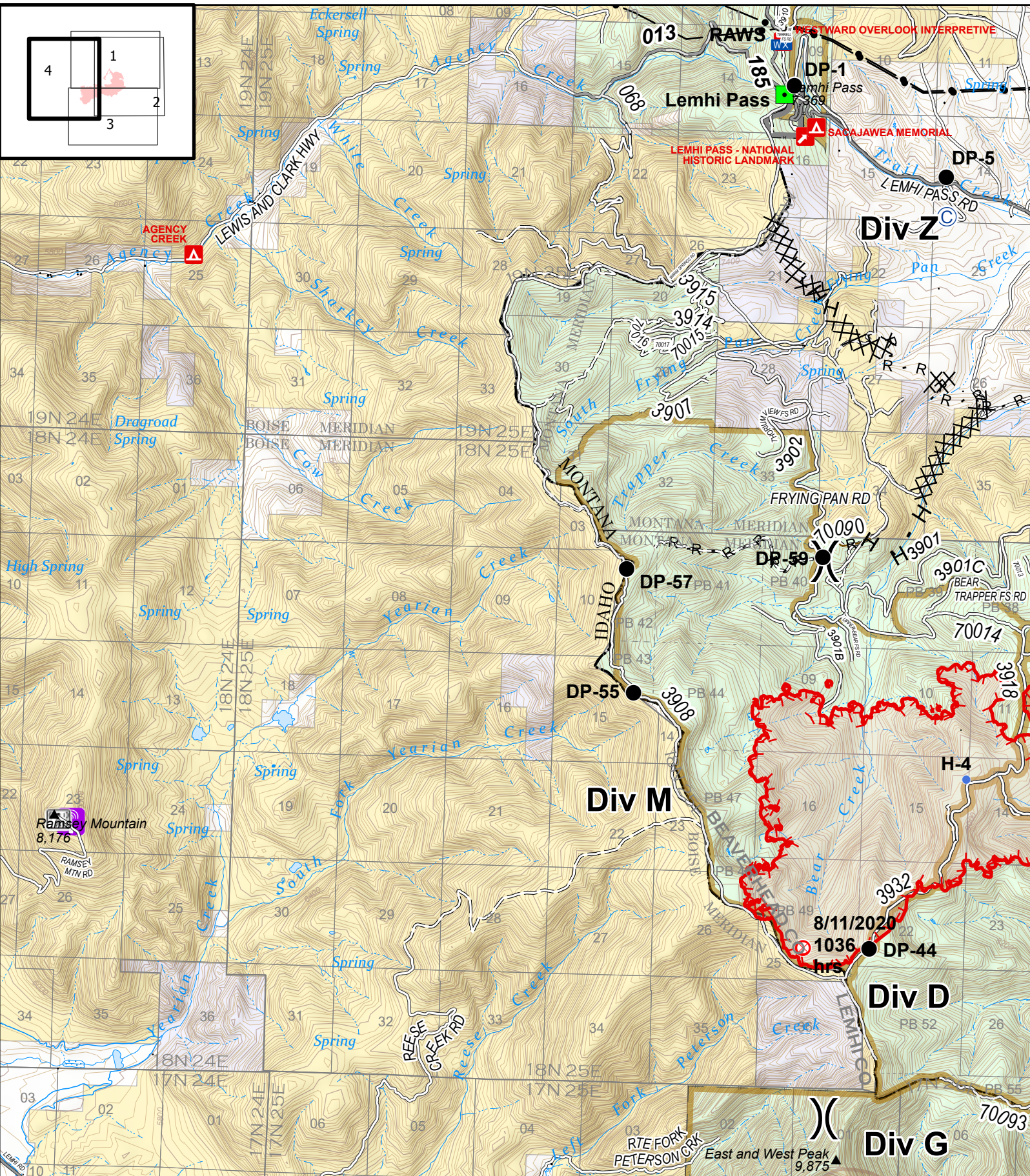
- Ⓞ Spike Camp
- Ⓛ Dip Site
- Drop Point
- ⊕ First Aid Station
- Ⓜ Helibase
- Ⓜ Helispot
- Ⓜ Cell Tower
- Ⓜ Mobile Weather Unit
- Ⓜ Staging Area
- Ⓜ Water Source
- Ⓜ Division Break
- Ⓜ Uncontrolled Fire Edge
- Ⓜ Contained Line
- Ⓜ Completed Dozer Line
- Ⓜ Completed Hand Line
- Ⓜ Road as Completed Line
- Ⓜ Wildfire Daily Fire Perimeter
- Ⓜ Radio Repeater Site
- Ⓜ Transmission Lines
- Ⓜ Forward Operating Base



**IAP**  
 Bear Creek  
 MT-BDF-006610  
 August 21, 2020  
 7,860 acres

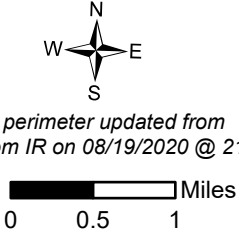


- ⊙ Spike Camp
- ⊕ Dip Site
- Drop Point
- ⊗ Fire Origin
- Helispot
- Landmark
- ) Division Break
- Uncontrolled Fire Edge
- Contained Line
- ⊗ Completed Dozer Line
- H Completed Hand Line
- R Road as Completed Line
- Wildfire Daily Fire Perimeter



**IAP**  
 Bear Creek  
 MT-BDF-006610  
 August 21, 2020  
 7,860 acres

Fire perimeter updated from  
 Acres from IR on 08/19/2020 @ 2120



- Spike Camp
- Drop Point
- ⊗ Fire Origin
- Helispot
- Landmark
- Ⓜ Mobile Weather Unit
- ⌋ Division Break
- ⌋ Uncontrolled Fire Edge
- ⊗ Completed Dozer Line
- H Completed Hand Line
- Road as Completed Line
- Wildfire Daily Fire Perimeter
- Ⓜ Cellular Towers
- Ⓜ Radio Repeater Site
- Transmission Lines