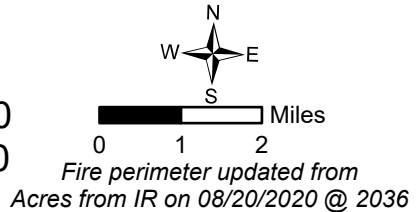
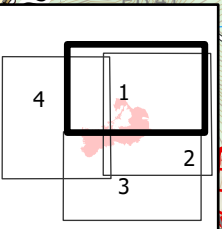
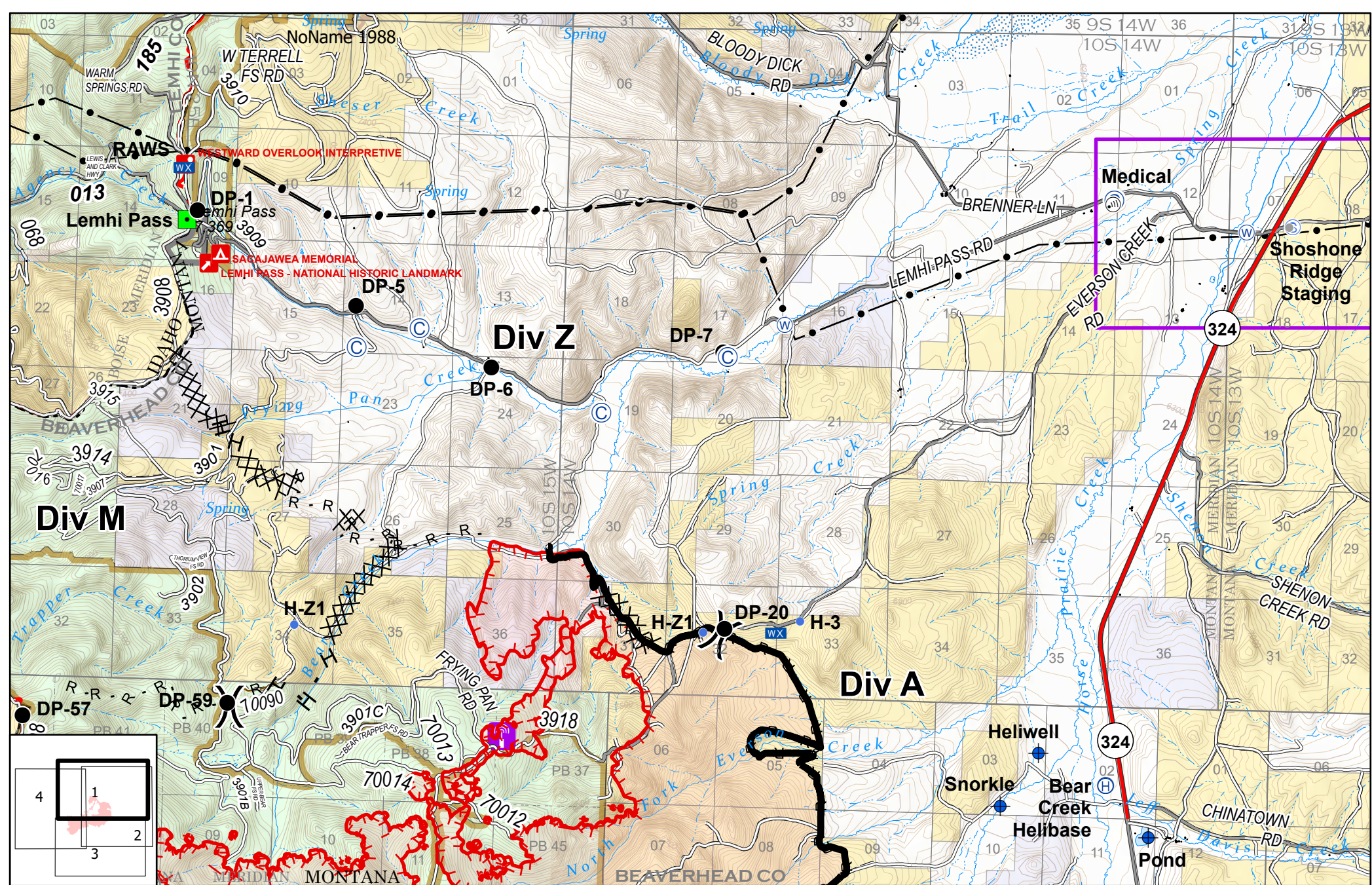


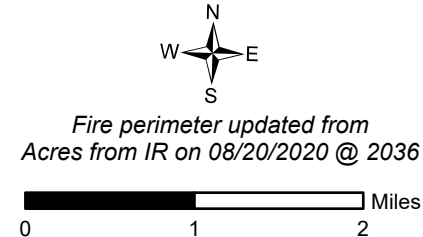
IAP Index
 Bear Creek
 MT-BDF-006610
 August 22, 2020
 8500 acres



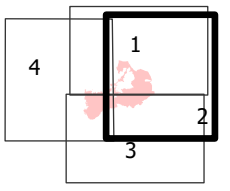
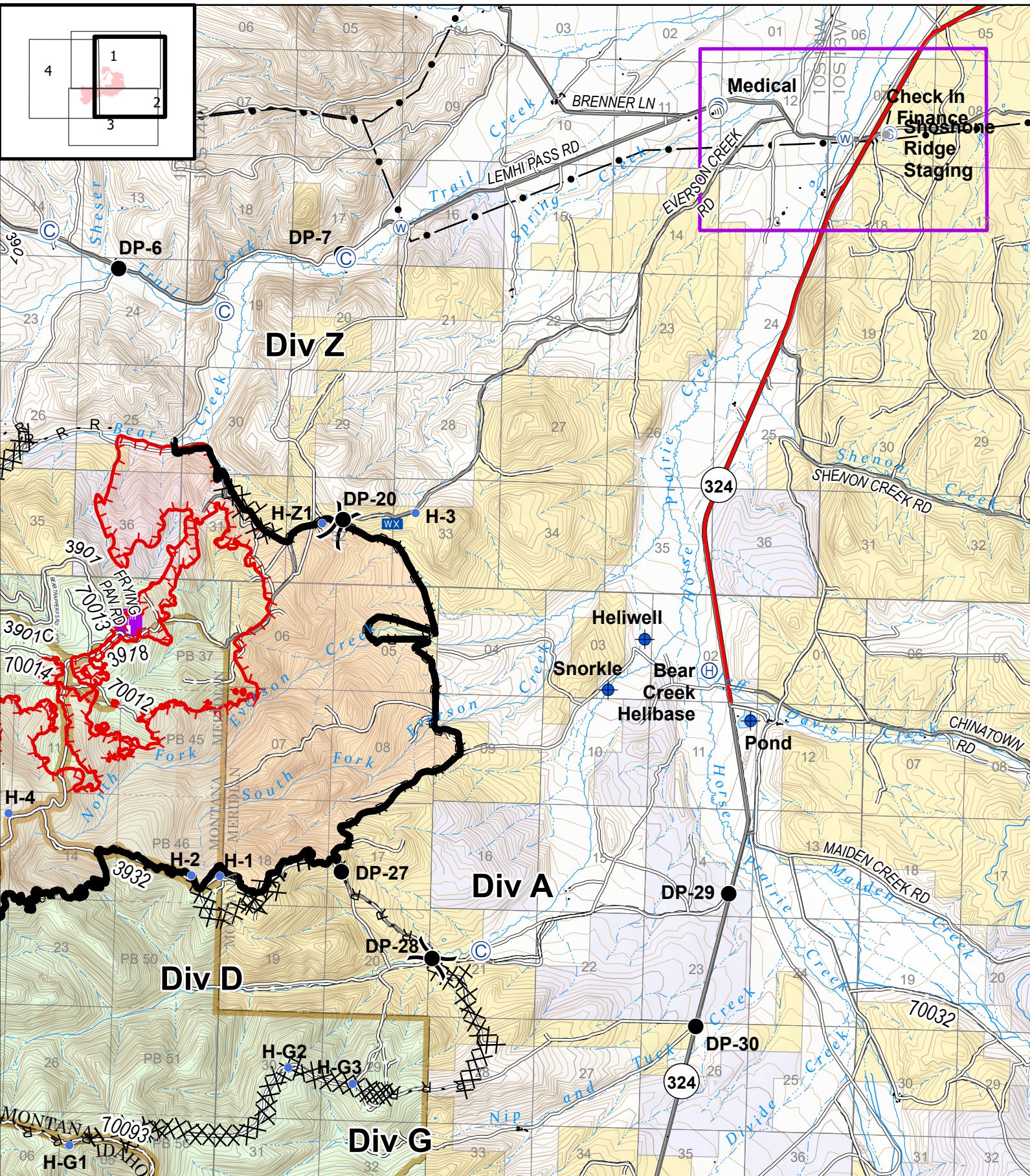
- Uncontrolled Fire Edge
- Contained Line
- Completed Dozer Line
- H Completed Hand Line
- R Road as Completed Line
- M Fire Break Planned or Incomplete
- Road Repair
- Wildfire Daily Fire Perimeter
- Spike Camp
- ◆ Dip Site
- Drop Point
- H Completed Hand Line
- R Road as Completed Line
- M Fire Break Planned or Incomplete
- Road Repair
- Wildfire Daily Fire Perimeter
- Landmark
- Mobile Weather Unit
- Staging Area
- ⊙ Water Source
- ⊙ First Aid Station
- ⊙ Helibase
- Helispot
- ⊙ Cell Tower
- Forward Operating Base



IAP
 Bear Creek
 MT-BDF-006610
 August 22, 2020
 8500 acres

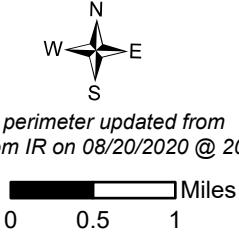


- | | | | |
|---------------------|-----------------------|--------------------------|---------------------------------|
| Ⓢ Spike Camp | 📶 Cell Tower |) Division Break | R Road as Completed Line |
| ⚡ Dip Site | 🟩 Landmark | 🔴 Uncontrolled Fire Edge | 📻 Radio Repeater Site |
| ● Drop Point | 📶 Mobile Weather Unit | ▬ Contained Line | — Transmission Lines |
| ⚕ First Aid Station | Ⓢ Staging Area | ⓧ Completed Dozer Line | 🟡 Wildfire Daily Fire Perimeter |
| Ⓜ Helibase | 🌊 Water Source | H Completed Hand Line | 🟪 Forward Operating Base |
| • Helispot | • Other | | |

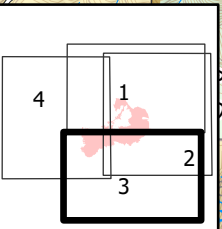
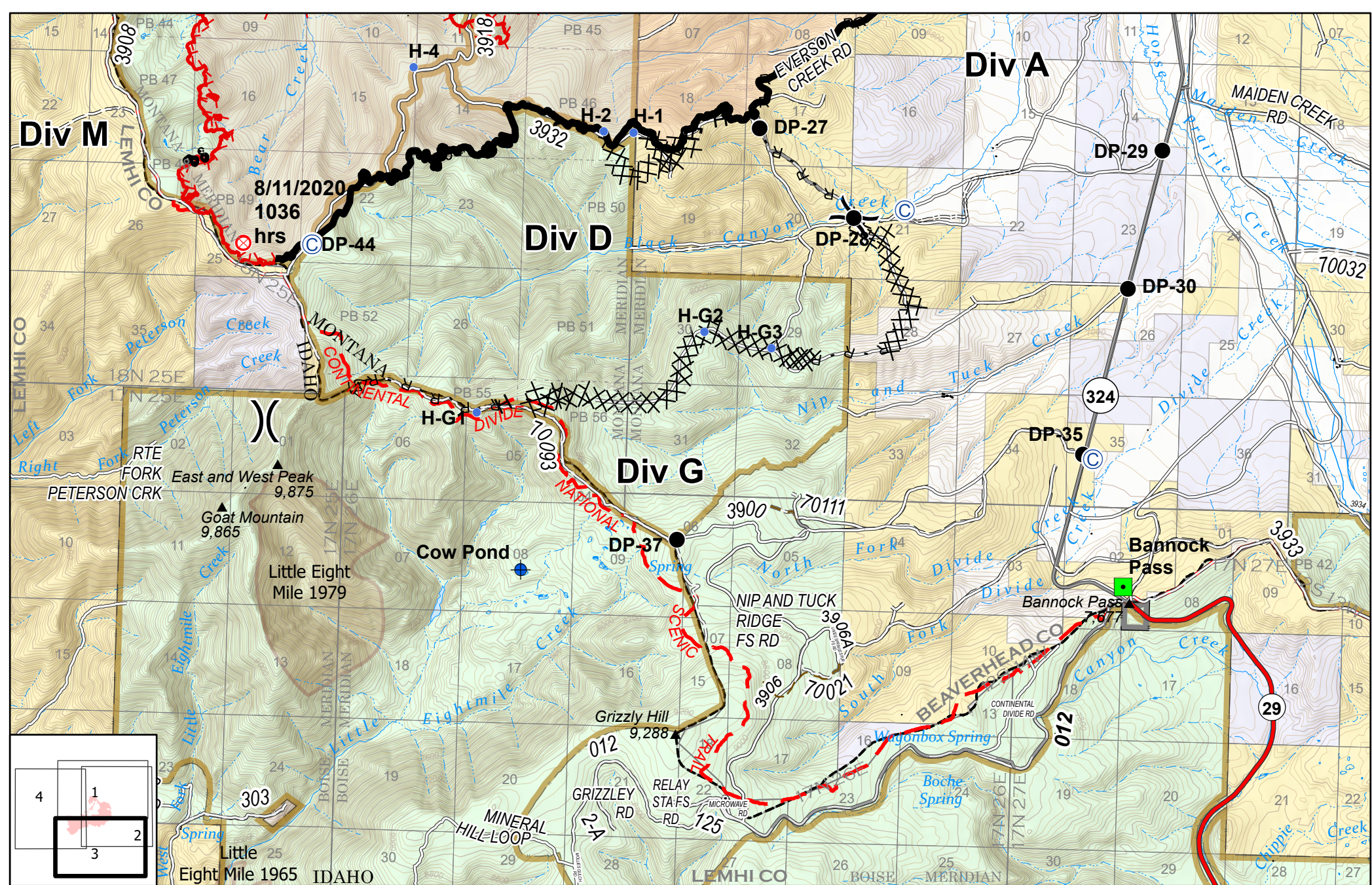


IAP
 Bear Creek
 MT-BDF-006610
 August 22, 2020
 8500 acres

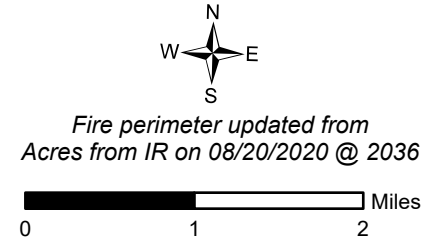
Fire perimeter updated from Acres from IR on 08/20/2020 @ 2036



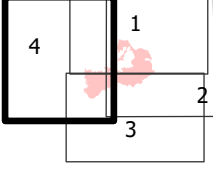
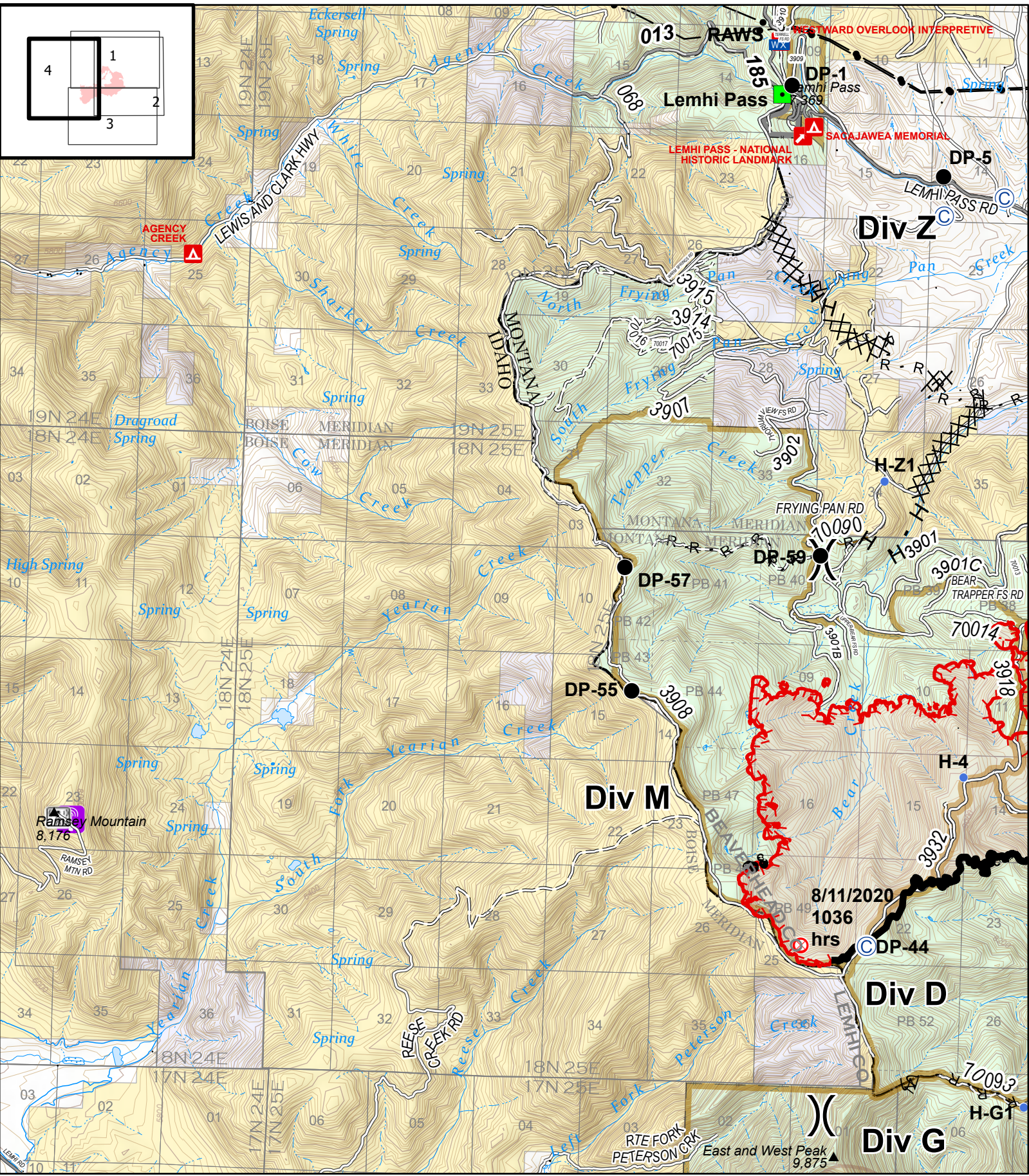
- | | | | |
|---------------------|-----------------------|--------------------------|---------------------------------|
| Ⓞ Spike Camp | Ⓜ Cell Tower | 🔴 Uncontrolled Fire Edge | 🟡 Wildfire Daily Fire Perimeter |
| Ⓧ Dip Site | 📶 Mobile Weather Unit | ⬜ Contained Line | 📻 Radio Repeater Site |
| ● Drop Point | Ⓢ Staging Area | ⓧ Completed Dozer Line | — Transmission Lines |
| ⚕ First Aid Station | 🌊 Water Source | Ⓜ Completed Hand Line | Ⓜ Road as Completed Line |
| Ⓜ Helibase | ● Other | Ⓜ Road Repair | |
| ● Helispot | Ⓜ Division Break | | |



IAP
 Bear Creek
 MT-BDF-006610
 August 22, 2020
 8500 acres

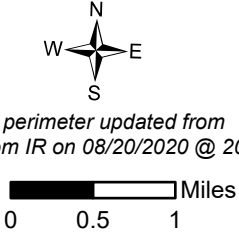


- | | | | | | |
|---|-------------|-----|------------------------|------|----------------------------------|
| ⊙ | Spike Camp | ■ | Landmark | H | Completed Hand Line |
| ⊕ | Dip Site |) | Division Break | R | Road as Completed Line |
| ● | Drop Point | — — | Uncontrolled Fire Edge | M M | Fire Break Planned or Incomplete |
| ⊗ | Fire Origin | — | Contained Line | ==== | Road Repair |
| • | Helispot | ⊗ | Completed Dozer Line | □ | Wildfire Daily Fire Perimeter |



IAP
 Bear Creek
 MT-BDF-006610
 August 22, 2020
 8500 acres

Fire perimeter updated from
 Acres from IR on 08/20/2020 @ 2036



- Spike Camp
- Drop Point
- ⊙ Fire Origin
- Helispot
- Landmark
- ☒ Mobile Weather Unit
- ⌋ Division Break
- ▬ Uncontrolled Fire Edge
- ▬ Contained Line
- XX Completed Dozer Line
- H Completed Hand Line
- R Road as Completed Line
- ⌒ Fire Break Planned or Incomplete
- ◻ Wildfire Daily Fire Perimeter
- 📶 Cellular Towers
- 📡 Radio Repeater Site
- Transmission Lines