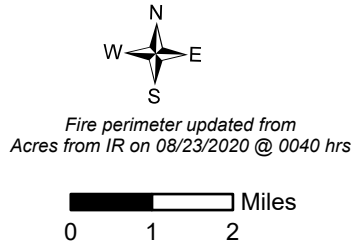
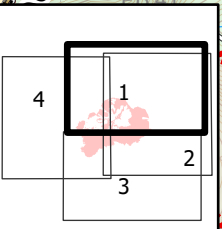
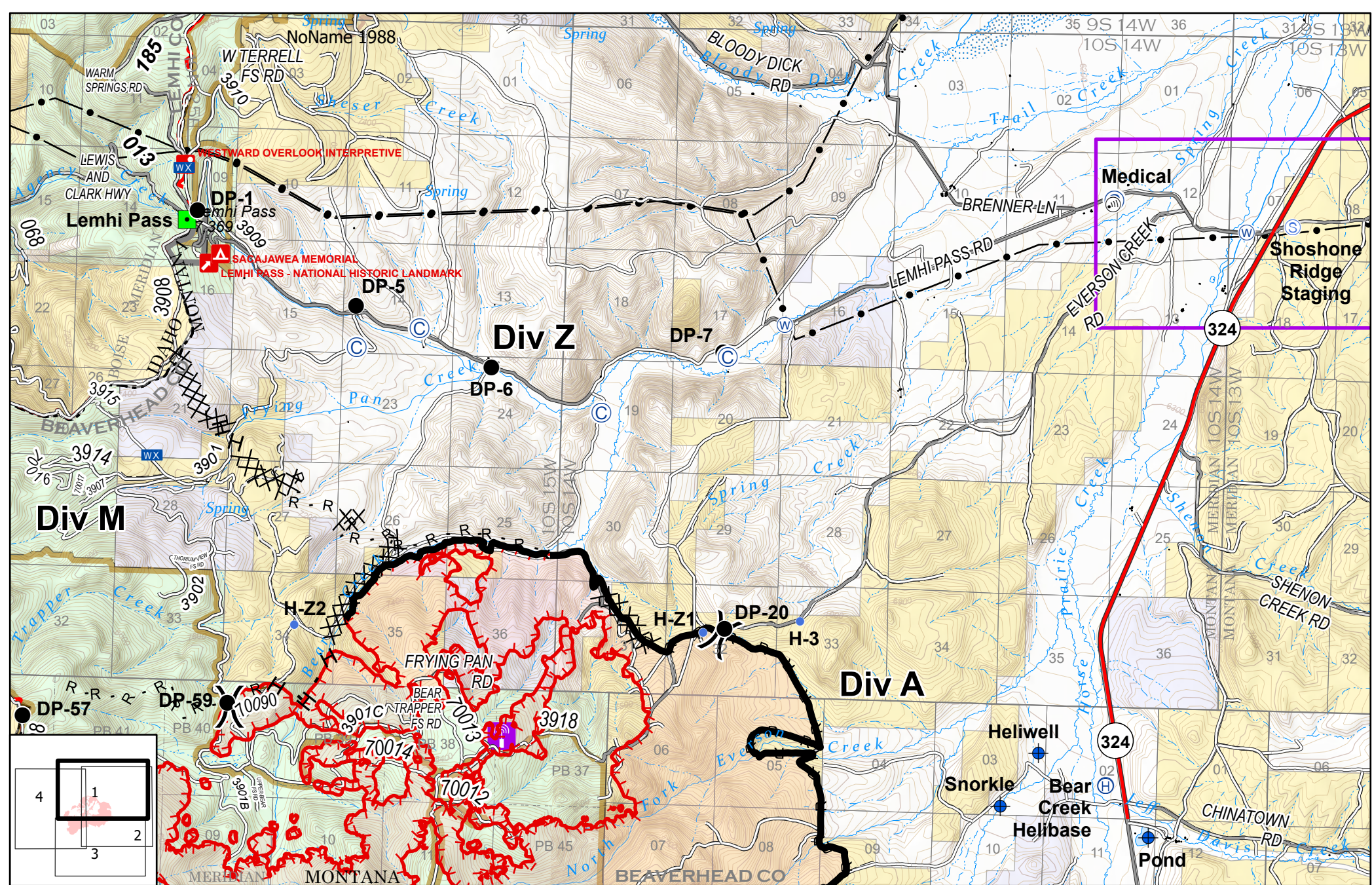


IAP Index
 Bear Creek
 MT-BDF-006610
 August 24, 2020
 10,275 acres



- | | | |
|----------------------------------|-------------------|------------------------|
| Uncontrolled Fire Edge | Spike Camp | Landmark |
| Contained Line | Dip Site | Lookout |
| Completed Dozer Line | Drop Point | Mobile Weather Unit |
| Completed Hand Line | Fire Origin | Staging Area |
| Road as Completed Line | First Aid Station | Water Source |
| Fire Break Planned or Incomplete | Helibase | Division Break |
| Road Repair | Helispot | Forward Operating Base |
| Wildfire Daily Fire Perimeter | Cell Tower | |

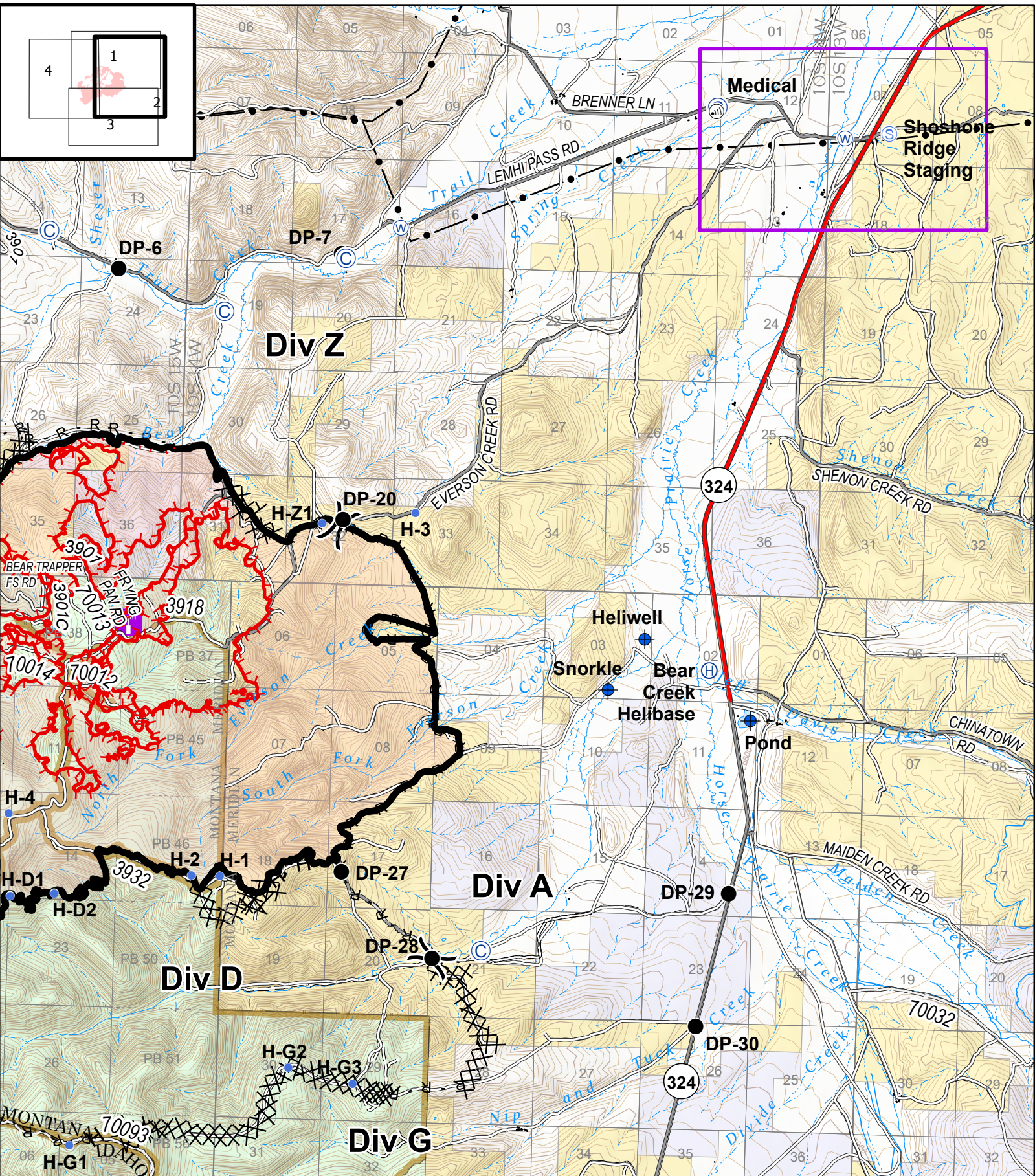


IAP
 Bear Creek
 MT-BDF-006610
 August 24, 2020
 10,275 acres

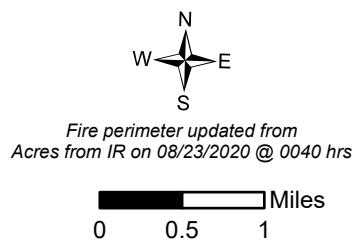
Fire perimeter updated from
 Acres from IR on 08/23/2020 @ 0040



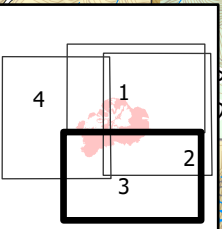
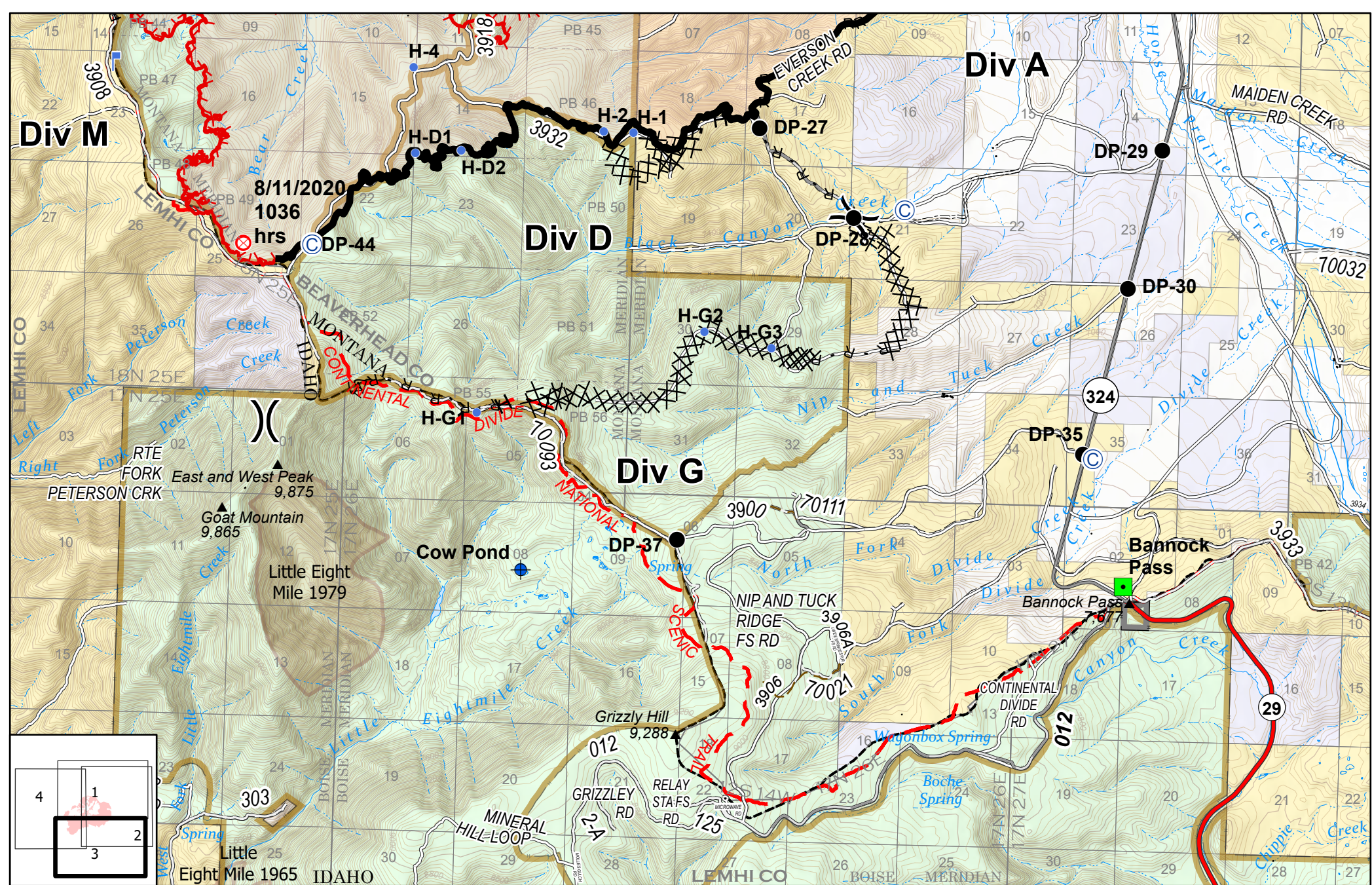
- | | | | |
|---------------------|-----------------------|--------------------------|---------------------------------|
| ⊙ Spike Camp | Ⓜ Cell Tower | — Uncontrolled Fire Edge | Ⓜ Radio Repeater Site |
| ⊕ Dip Site | ■ Landmark | — Contained Line | — Transmission Lines |
| ● Drop Point | Ⓜ Mobile Weather Unit | ⊗ Completed Dozer Line | — Wildfire Daily Fire Perimeter |
| ⊕ First Aid Station | Ⓜ Staging Area | H Completed Hand Line | — Forward Operating Base |
| Ⓜ Helibase | Ⓜ Water Source | R Road as Completed Line | |
| • Helispot |) Division Break | | |



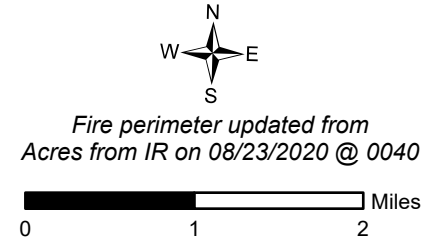
IAP
 Bear Creek
 MT-BDF-006610
 August 24, 2020
 10,275 acres



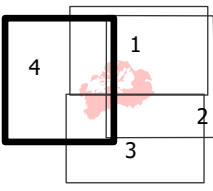
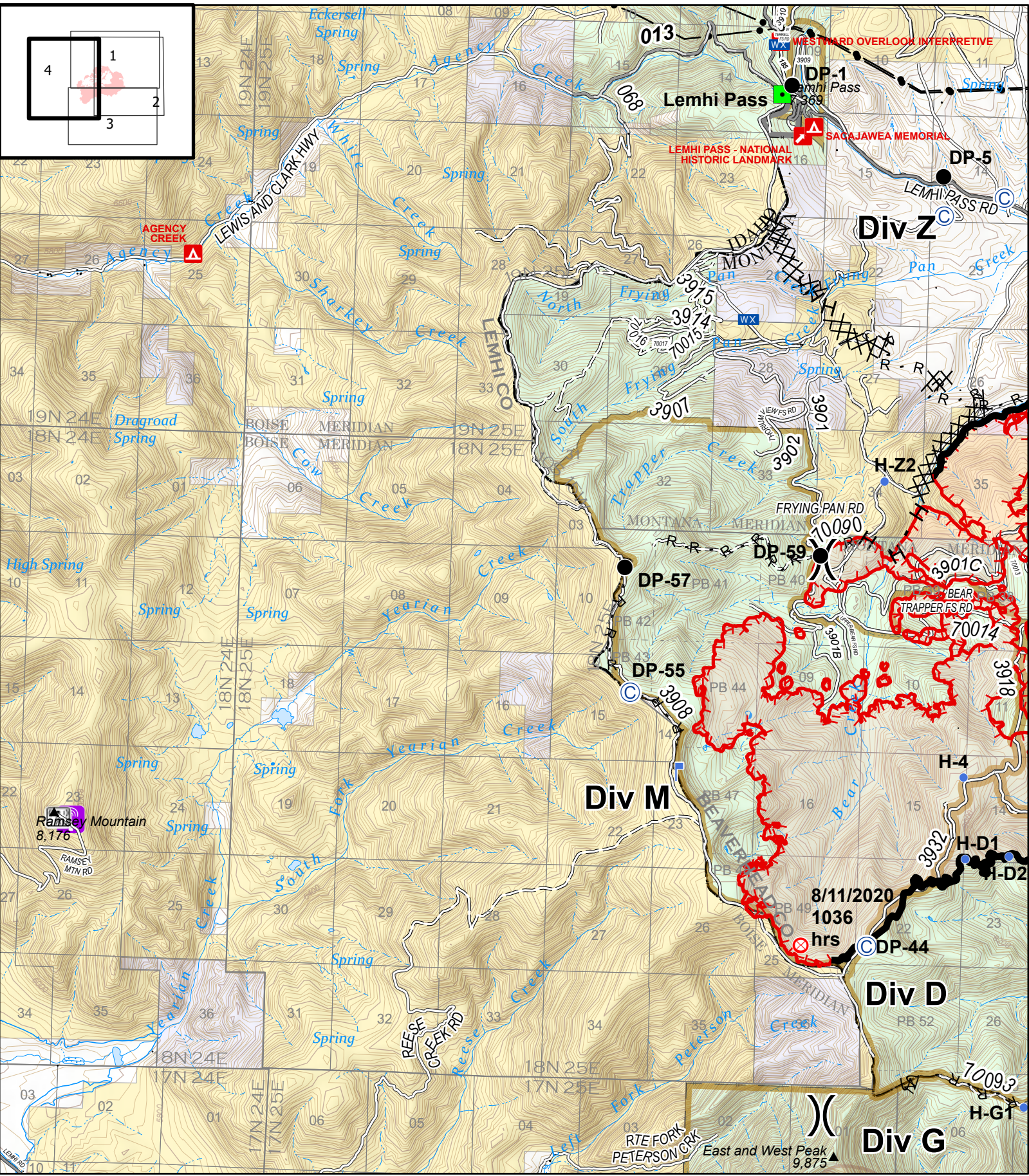
- | | | | |
|---------------------|------------------|--------------------------|---------------------------------|
| Ⓞ Spike Camp | ● Helispot | ▬ Uncontrolled Fire Edge | ⋯ Road Repair |
| Ⓧ Dip Site | Ⓜ Cell Tower | ▬ Contained Line | ▭ Wildfire Daily Fire Perimeter |
| ● Drop Point | Ⓢ Staging Area | ⊗ Completed Dozer Line | ⓡ Radio Repeater Site |
| ⊕ First Aid Station | Ⓦ Water Source | Ⓜ Completed Hand Line | Ⓣ Transmission Lines |
| Ⓜ Helibase |) Division Break | Ⓡ Road as Completed Line | ▭ Forward Operating Base |



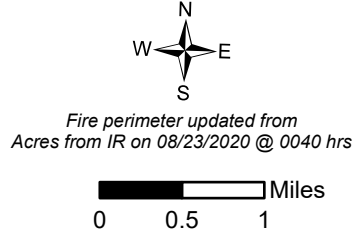
IAP
 Bear Creek
 MT-BDF-006610
 August 24, 2020
 10,275 acres



- | | | | | | |
|---|-------------|-----|------------------------|---|----------------------------------|
| ⊙ | Spike Camp | ⬮ | Lookout | H | Completed Hand Line |
| ⬮ | Dip Site |) (| Division Break | R | Road as Completed Line |
| ● | Drop Point | — — | Uncontrolled Fire Edge | ⋯ | Fire Break Planned or Incomplete |
| ⊗ | Fire Origin | — | Contained Line | ⋯ | Road Repair |
| ● | Helispot | ⊗ | Completed Dozer Line | ■ | Wildfire Daily Fire Perimeter |
| ■ | Landmark | | | | |



IAP
 Bear Creek
 MT-BDF-006610
 August 24, 2020
 10,275 acres



- | | | |
|---------------|--------------------------|------------------------------------|
| ● Spike Camp | ☒ Mobile Weather Unit | R Road as Completed Line |
| ● Drop Point |)) Division Break | M Fire Break Planned or Incomplete |
| ⊙ Fire Origin | ▬ Uncontrolled Fire Edge | ▭ Wildfire Daily Fire Perimeter |
| • Helispot | ▬ Contained Line | ☎ Cellular Towers |
| ■ Landmark | XX Completed Dozer Line | 📻 Radio Repeater Site |
| ⚡ Lookout | H Completed Hand Line | |