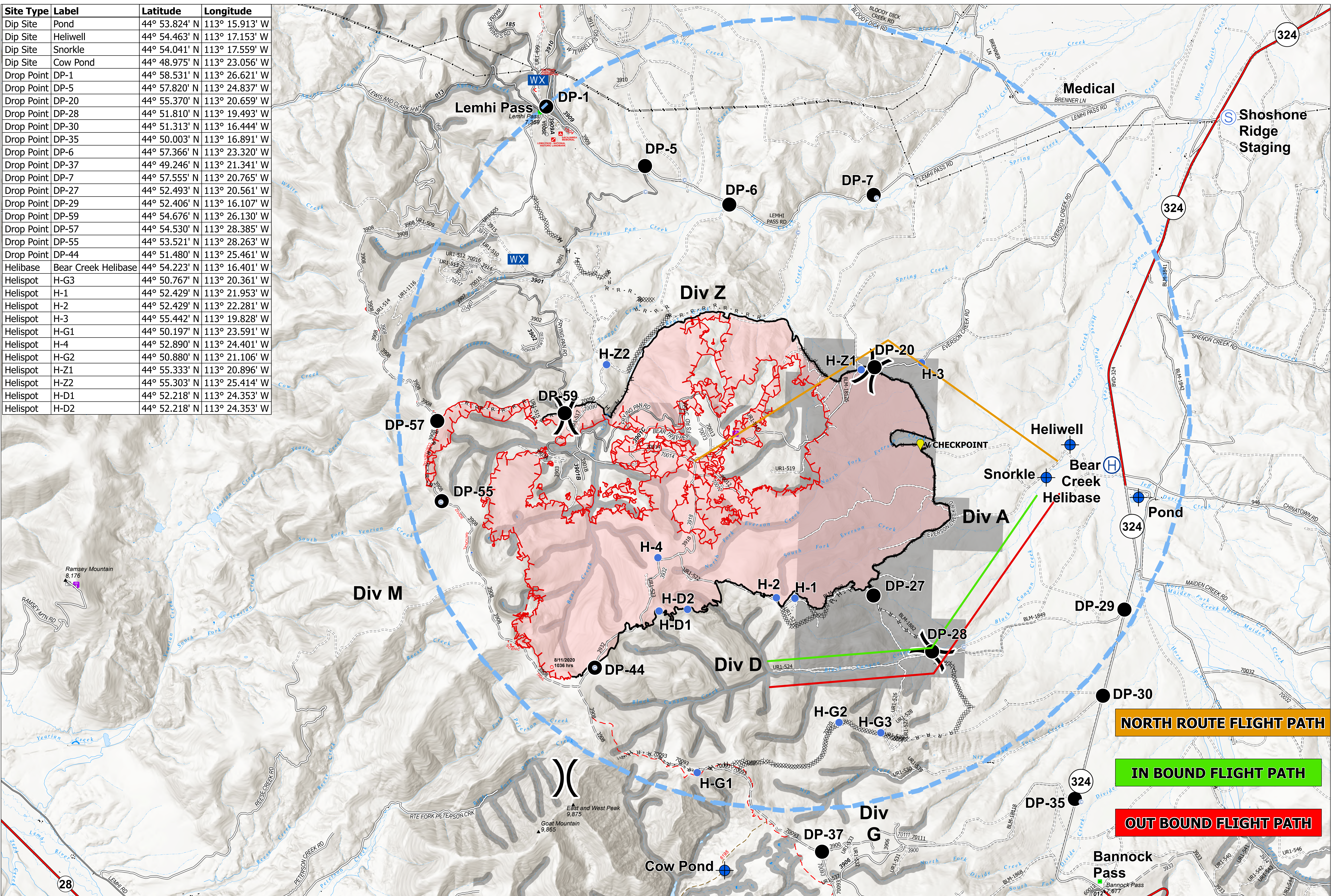
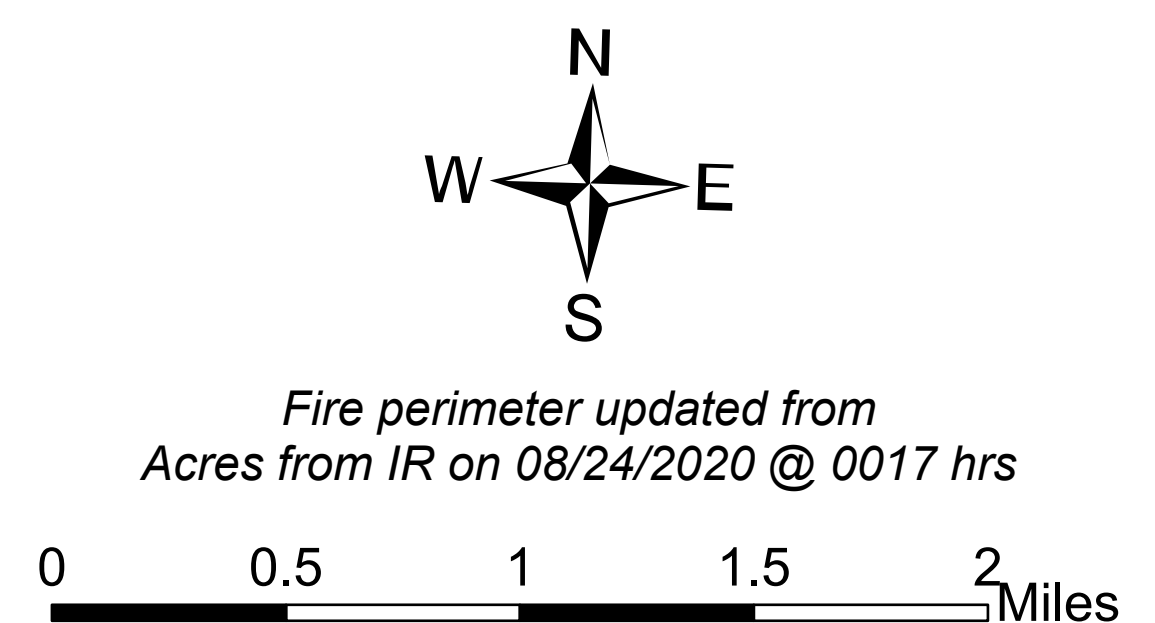


Site Type	Label	Latitude	Longitude
Dip Site	Pond	44° 53.824' N	113° 15.913' W
Dip Site	Heliwell	44° 54.463' N	113° 17.153' W
Dip Site	Snorkle	44° 54.041' N	113° 17.559' W
Dip Site	Cow Pond	44° 48.975' N	113° 23.056' W
Drop Point	DP-1	44° 58.531' N	113° 26.621' W
Drop Point	DP-5	44° 57.820' N	113° 24.837' W
Drop Point	DP-20	44° 55.370' N	113° 20.659' W
Drop Point	DP-28	44° 51.810' N	113° 19.493' W
Drop Point	DP-30	44° 51.313' N	113° 16.444' W
Drop Point	DP-35	44° 50.003' N	113° 16.891' W
Drop Point	DP-6	44° 57.366' N	113° 23.320' W
Drop Point	DP-37	44° 49.246' N	113° 21.341' W
Drop Point	DP-7	44° 57.555' N	113° 20.765' W
Drop Point	DP-27	44° 52.493' N	113° 20.561' W
Drop Point	DP-29	44° 52.406' N	113° 16.107' W
Drop Point	DP-59	44° 54.676' N	113° 26.130' W
Drop Point	DP-57	44° 54.530' N	113° 28.385' W
Drop Point	DP-55	44° 53.521' N	113° 28.263' W
Drop Point	DP-44	44° 51.480' N	113° 25.461' W
Helibase	Bear Creek Helibase	44° 54.223' N	113° 16.401' W
Helispot	H-G3	44° 50.767' N	113° 20.361' W
Helispot	H-1	44° 52.429' N	113° 21.953' W
Helispot	H-2	44° 52.429' N	113° 22.281' W
Helispot	H-3	44° 55.442' N	113° 19.828' W
Helispot	H-G1	44° 50.197' N	113° 23.591' W
Helispot	H-4	44° 52.890' N	113° 24.401' W
Helispot	H-G2	44° 50.880' N	113° 21.106' W
Helispot	H-Z1	44° 55.333' N	113° 20.896' W
Helispot	H-Z2	44° 55.303' N	113° 25.414' W
Helispot	H-D1	44° 52.218' N	113° 24.353' W
Helispot	H-D2	44° 52.218' N	113° 24.353' W



**Air Ops**  
 Bear Creek  
 MT-BDF-006610  
 August 25, 2020  
 10,706 acres



- Camp
  - Dip Site
  - Drop Point
  - Fire Origin
  - First Aid Station
  - Helibase
  - Helispot
- Internet Access
  - Landmark
  - Lookout
  - Mobile Weather Unit
  - Staging Area
  - Water Source
  - Division Break
- Uncontrolled Fire Edge
  - Contained Line
  - Completed Dozer Line
  - H - H Completed Hand Line
  - R - R Road as Completed Line
  - Fire Break Planned or Incomplete
  - Road Repair
- Wildfire Daily Fire Perimeter
  - TFR - Frequency 118.6
  - USGS Mountain Features
  - Structure Footprints
  - Gravel Road, Suitable for Passenger Car
  - Dirt Road, Suitable for Passenger Car
  - Road, Not Maintained for Passenger Car
  - Highway
  - Roads, Paved
  - Roads, Other
  - USFS Trails
  - Continental Divide National Scenic Trail
- Campground
  - HIFLD Cellular Towers
  - Radio Repeater Site
  - Transmission Lines
  - Retardant Avoidance Area

