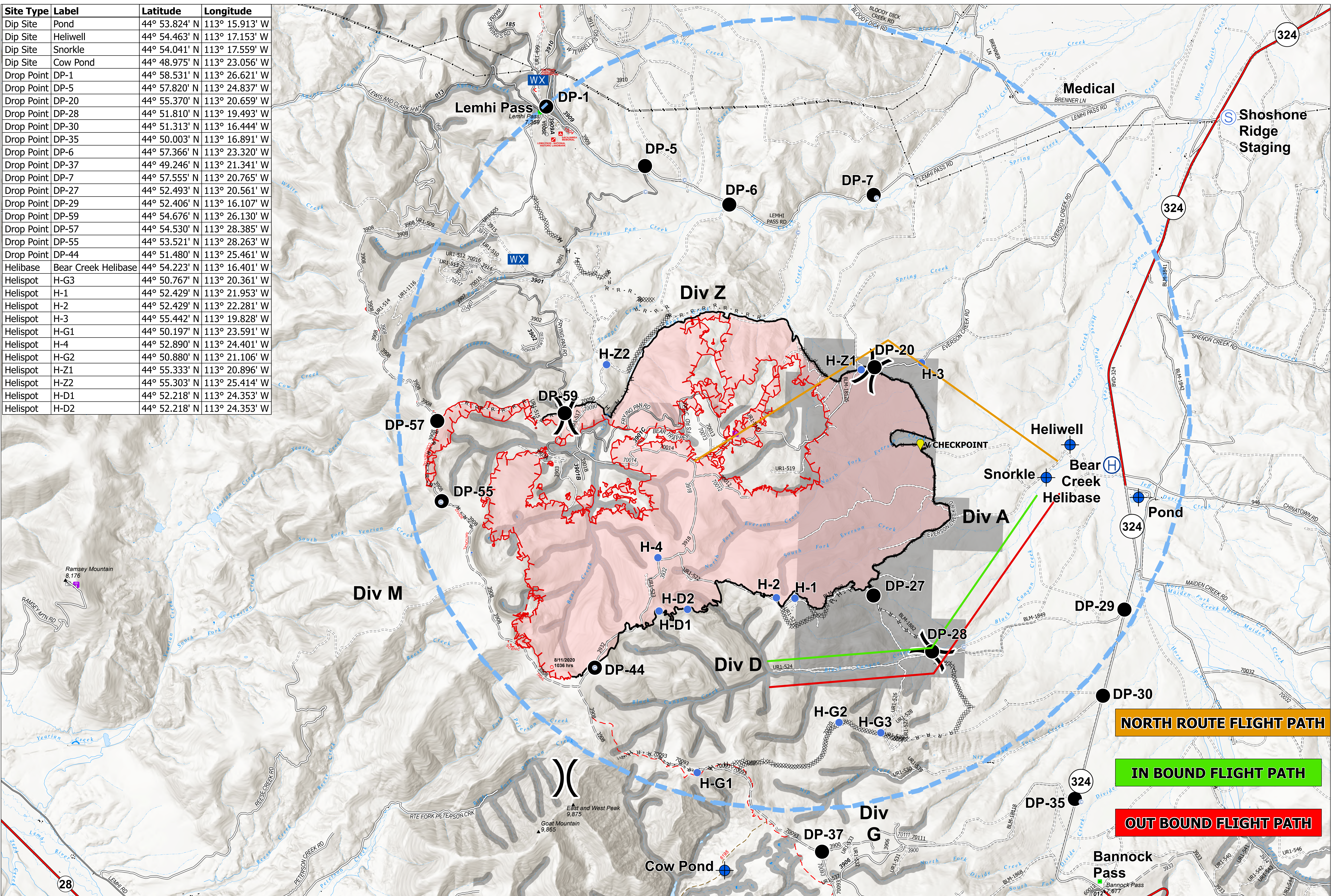
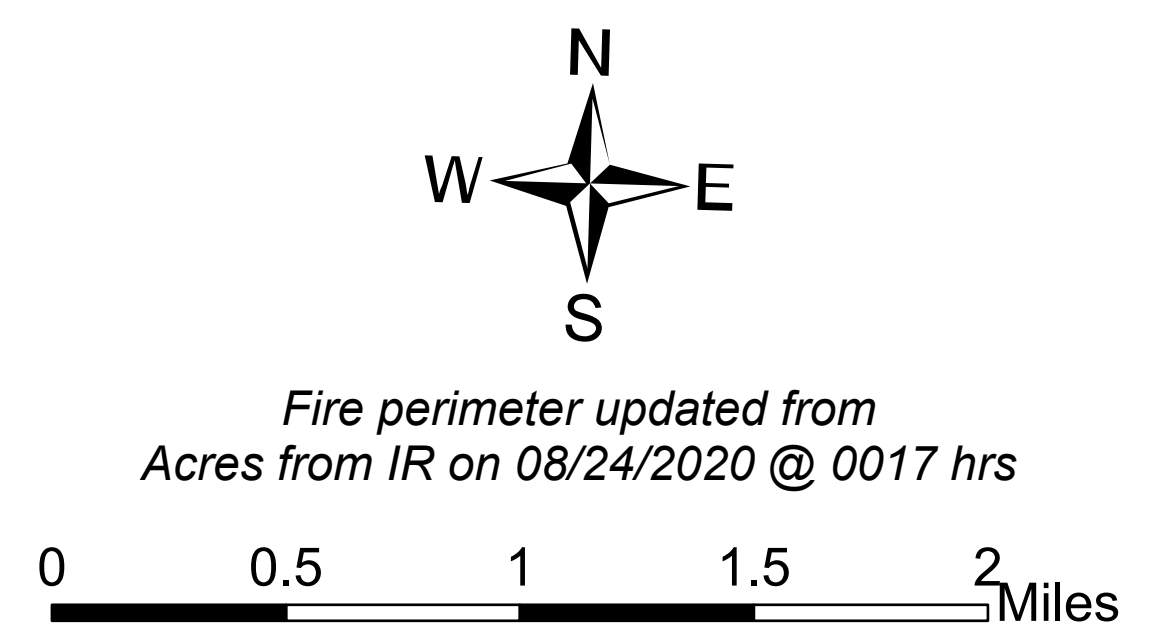


Site Type	Label	Latitude	Longitude
Dip Site	Pond	44° 53.824' N	113° 15.913' W
Dip Site	Heliwell	44° 54.463' N	113° 17.153' W
Dip Site	Snorkle	44° 54.041' N	113° 17.559' W
Dip Site	Cow Pond	44° 48.975' N	113° 23.056' W
Drop Point	DP-1	44° 58.531' N	113° 26.621' W
Drop Point	DP-5	44° 57.820' N	113° 24.837' W
Drop Point	DP-20	44° 55.370' N	113° 20.659' W
Drop Point	DP-28	44° 51.810' N	113° 19.493' W
Drop Point	DP-30	44° 51.313' N	113° 16.444' W
Drop Point	DP-35	44° 50.003' N	113° 16.891' W
Drop Point	DP-6	44° 57.366' N	113° 23.320' W
Drop Point	DP-37	44° 49.246' N	113° 21.341' W
Drop Point	DP-7	44° 57.555' N	113° 20.765' W
Drop Point	DP-27	44° 52.493' N	113° 20.561' W
Drop Point	DP-29	44° 52.406' N	113° 16.107' W
Drop Point	DP-59	44° 54.676' N	113° 26.130' W
Drop Point	DP-57	44° 54.530' N	113° 28.385' W
Drop Point	DP-55	44° 53.521' N	113° 28.263' W
Drop Point	DP-44	44° 51.480' N	113° 25.461' W
Helibase	Bear Creek Helibase	44° 54.223' N	113° 16.401' W
Helispot	H-G3	44° 50.767' N	113° 20.361' W
Helispot	H-1	44° 52.429' N	113° 21.953' W
Helispot	H-2	44° 52.429' N	113° 22.281' W
Helispot	H-3	44° 55.442' N	113° 19.828' W
Helispot	H-G1	44° 50.197' N	113° 23.591' W
Helispot	H-4	44° 52.890' N	113° 24.401' W
Helispot	H-G2	44° 50.880' N	113° 21.106' W
Helispot	H-Z1	44° 55.333' N	113° 20.896' W
Helispot	H-Z2	44° 55.303' N	113° 25.414' W
Helispot	H-D1	44° 52.218' N	113° 24.353' W
Helispot	H-D2	44° 52.218' N	113° 24.353' W



Air Ops
 Bear Creek
 MT-BDF-006610
 August 25, 2020
 11,236 acres



- ⊙ Camp
 - ⊕ Dip Site
 - Drop Point
 - ⊕ Fire Origin
 - ⊕ First Aid Station
 - ⊕ Helibase
 - Helispot
- ⊕ Internet Access
 - ⊕ Landmark
 - ⊕ Lookout
 - ⊕ Mobile Weather Unit
 - ⊕ Staging Area
 - ⊕ Water Source
 - ⊕ Division Break
- Uncontrolled Fire Edge
 - Contained Line
 - ⊗ Completed Dozer Line
 - H - H Completed Hand Line
 - R - R Road as Completed Line
 - ⊕ Fire Break Planned or Incomplete
 - Road Repair
- ▭ Wildfire Daily Fire Perimeter
 - ⊕ TFR - Frequency 118.6
 - ▲ USGS Mountain Features
 - ▭ Structure Footprints
 - Gravel Road, Suitable for Passenger Car
 - Dirt Road, Suitable for Passenger Car
- Road, Not Maintained for Passenger Car
 - Highway
 - Roads, Paved
 - Roads, Other
 - USFS Trails
 - Continental Divide National Scenic Trail
- ⊕ Campground
 - ⊕ HIFLD Cellular Towers
 - ⊕ Radio Repeater Site
 - Transmission Lines
 - ▭ Retardant Avoidance Area

