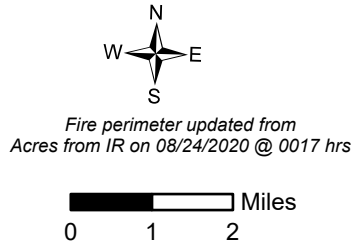
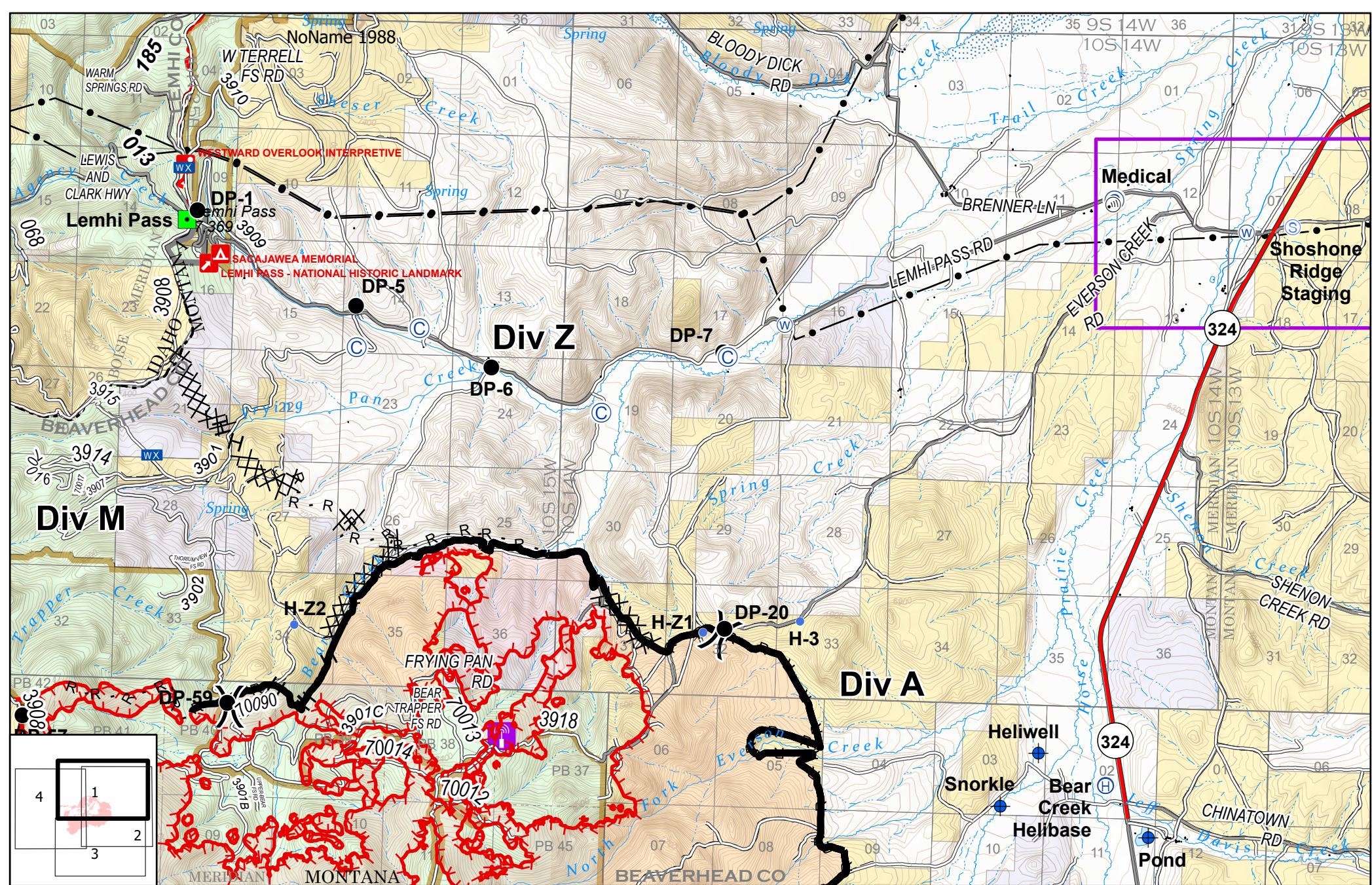


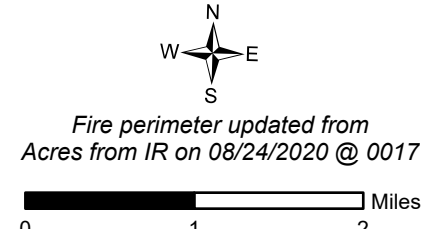
IAP Index
 Bear Creek
 MT-BDF-006610
 August 25, 2020
 10,706 acres



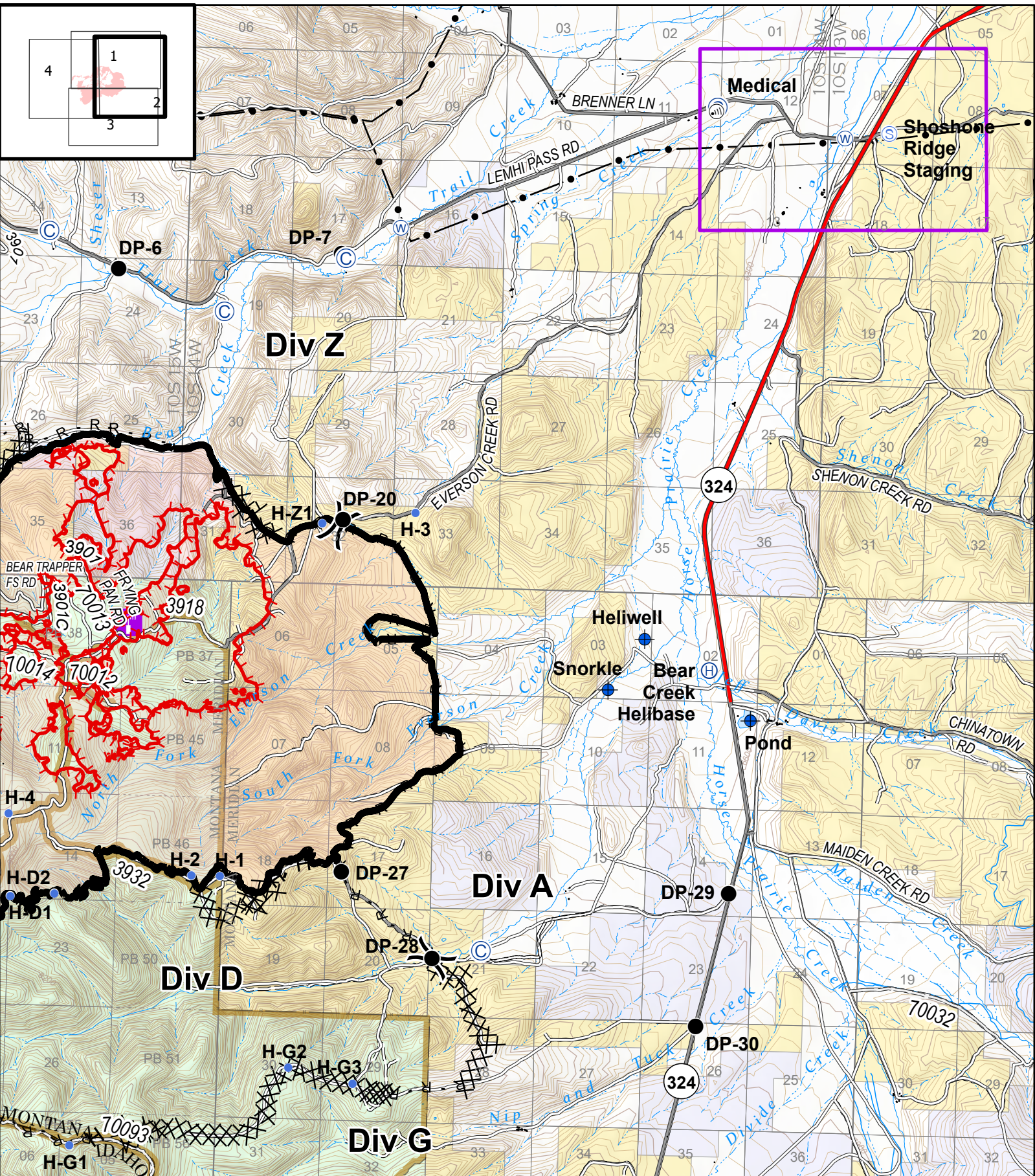
- | | | |
|----------------------------------|-------------------|------------------------|
| Uncontrolled Fire Edge | Spike Camp | Landmark |
| Contained Line | Dip Site | Lookout |
| Completed Dozer Line | Drop Point | Mobile Weather Unit |
| Completed Hand Line | Fire Origin | Staging Area |
| Road as Completed Line | First Aid Station | Water Source |
| Fire Break Planned or Incomplete | Helibase | Division Break |
| Road Repair | Helispot | Forward Operating Base |
| Wildfire Daily Fire Perimeter | Cell Tower | |



IAP
 Bear Creek
 MT-BDF-006610
 August 25, 2020
 10,706 acres



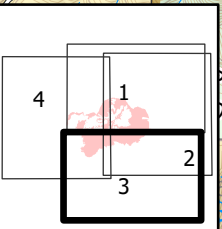
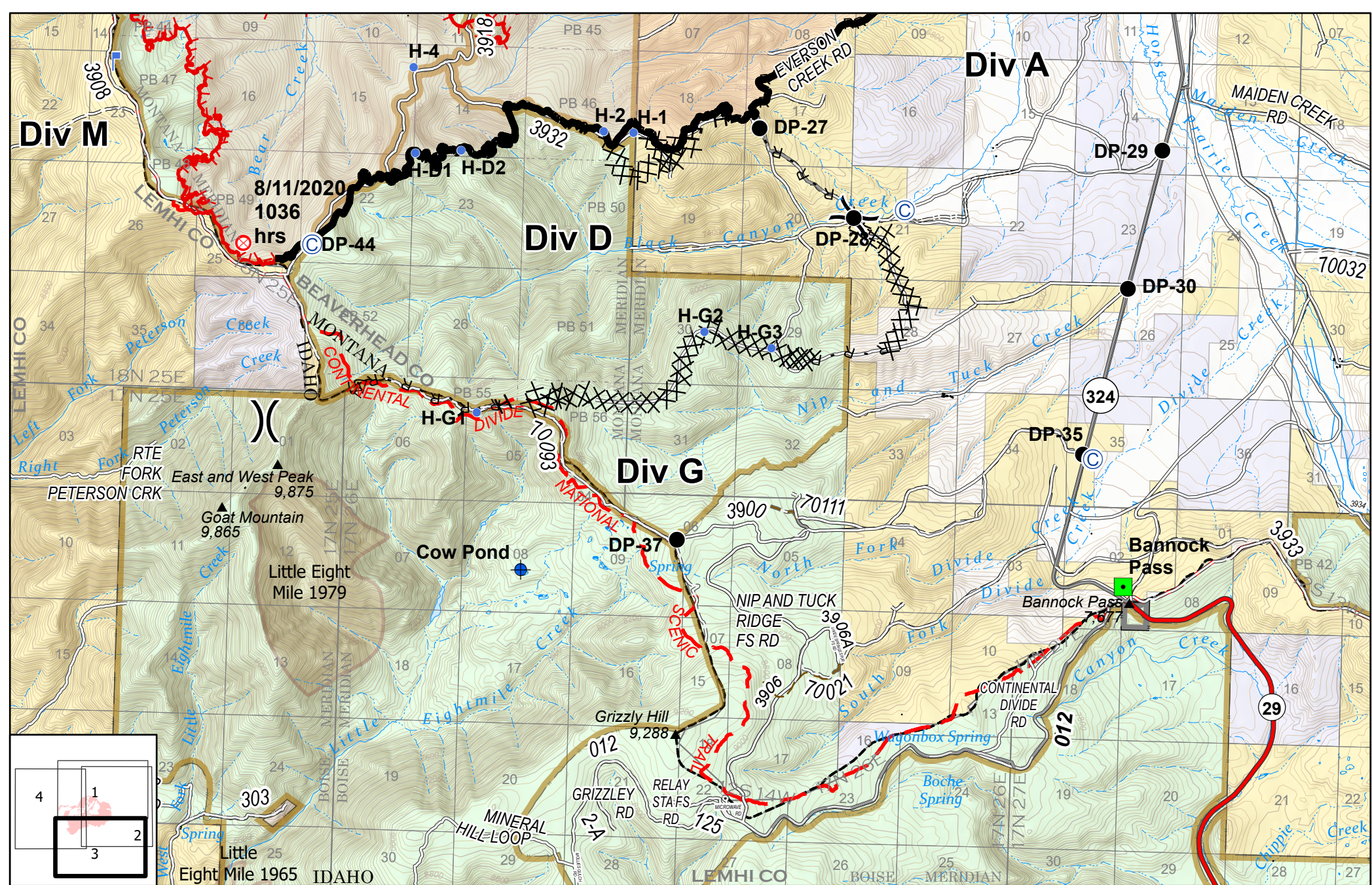
- | | | | |
|---------------------|-----------------------|--------------------------|---------------------------------|
| Ⓢ Spike Camp | Ⓜ Cell Tower | 🔴 Uncontrolled Fire Edge | 📻 Radio Repeater Site |
| Ⓡ Dip Site | 🟩 Landmark | ▬ Contained Line | — Transmission Lines |
| ● Drop Point | 📶 Mobile Weather Unit | ⌘ Completed Dozer Line | 🏠 Wildfire Daily Fire Perimeter |
| Ⓡ First Aid Station | 📍 Staging Area | H Completed Hand Line | 🟪 Forward Operating Base |
| Ⓡ Helibase | 🌊 Water Source | R Road as Completed Line | |
| Ⓡ Helispot | ⌘ Division Break | | |



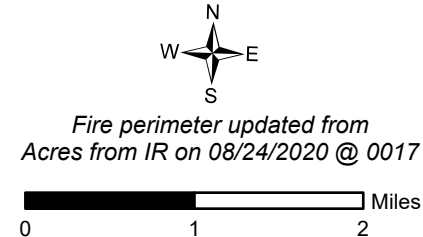
IAP
 Bear Creek
 MT-BDF-006610
 August 25, 2020
 10,706 acres

Fire perimeter updated from IR on 08/24/2020 @ 0017 hrs
 0 0.5 1 Miles

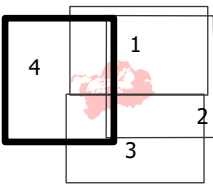
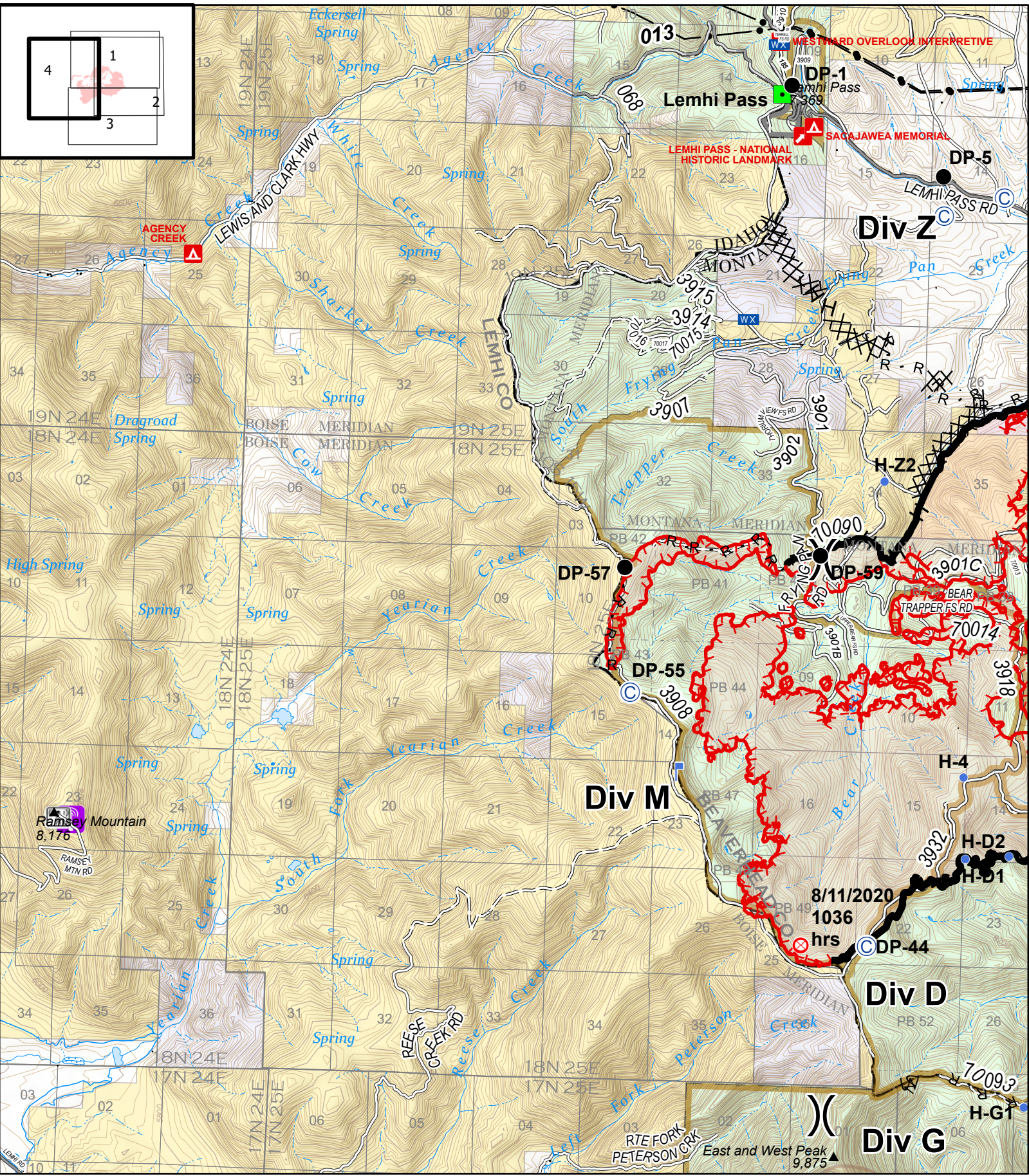
- | | | | |
|---------------------|------------------|--------------------------|---------------------------------|
| Ⓞ Spike Camp | ● Helispot | — Uncontrolled Fire Edge | == Road Repair |
| Ⓧ Dip Site | Ⓜ Cell Tower | — Contained Line | ▭ Wildfire Daily Fire Perimeter |
| ● Drop Point | Ⓢ Staging Area | ⊗ Completed Dozer Line | ⓡ Radio Repeater Site |
| ⊕ First Aid Station | Ⓦ Water Source | Ⓜ Completed Hand Line | — Transmission Lines |
| Ⓜ Helibase |) Division Break | Ⓜ Road as Completed Line | ▭ Forward Operating Base |



IAP
 Bear Creek
 MT-BDF-006610
 August 25, 2020
 10,706 acres



- | | | | | | |
|---|-------------|-----|------------------------|----|----------------------------------|
| ⊙ | Spike Camp | ⌚ | Lookout | H | Completed Hand Line |
| ⬢ | Dip Site | ⌘ | Division Break | R | Road as Completed Line |
| ● | Drop Point | — — | Uncontrolled Fire Edge | ⋯ | Fire Break Planned or Incomplete |
| ⊗ | Fire Origin | — | Contained Line | ⋯⋯ | Road Repair |
| ⬤ | Helispot | ⌘⌘ | Completed Dozer Line | ■ | Wildfire Daily Fire Perimeter |
| ■ | Landmark | | | | |



IAP
 Bear Creek
 MT-BDF-006610
 August 25, 2020
 10,706 acres

Fire perimeter updated from IR on 08/24/2020 @ 0017 hrs

A north arrow pointing up, with 'N' at the top, 'S' at the bottom, 'E' on the right, and 'W' on the left. Below it is a scale bar showing 0, 0.5, and 1 mile.

- | | | |
|---------------|--------------------------|------------------------------------|
| ● Spike Camp | ☒ Mobile Weather Unit | R Road as Completed Line |
| ● Drop Point |)) Division Break | M Fire Break Planned or Incomplete |
| ⊙ Fire Origin | ▬ Uncontrolled Fire Edge | ▭ Wildfire Daily Fire Perimeter |
| • Helispot | ▬ Contained Line | ☎ Cellular Towers |
| ■ Landmark | XX Completed Dozer Line | 📻 Radio Repeater Site |
| ⚡ Lookout | H Completed Hand Line | |