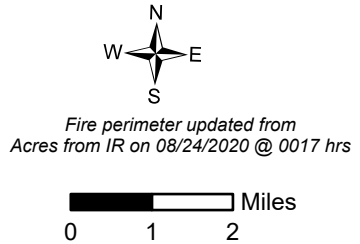
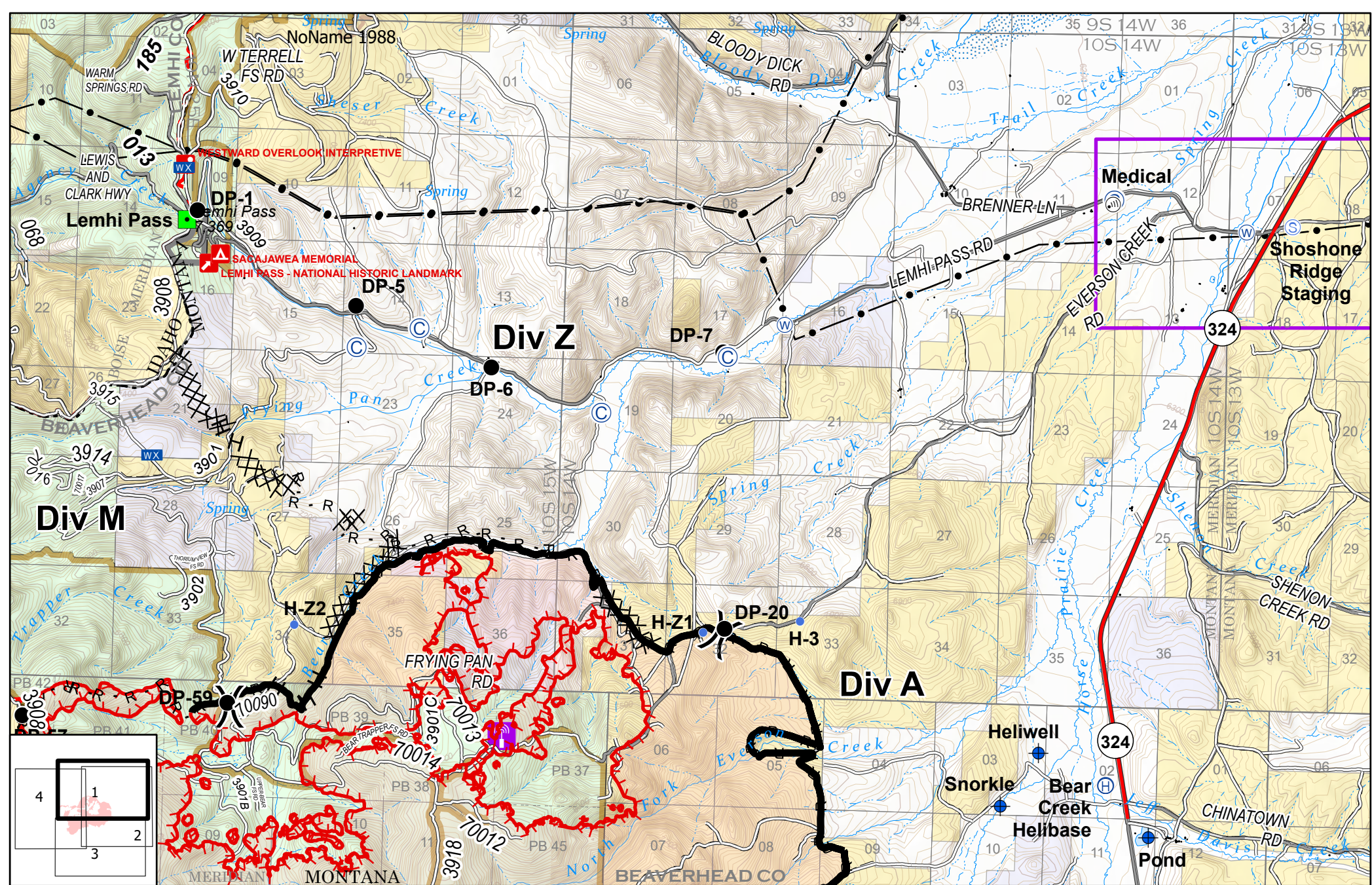


**IAP Index**  
 Bear Creek  
 MT-BDF-006610  
 August 26, 2020  
 11,236 acres



- Uncontrolled Fire Edge
- Contained Line
- Completed Dozer Line
- H Completed Hand Line
- R Road as Completed Line
- Λ Fire Break Planned or Incomplete
- Road Repair
- Wildfire Daily Fire Perimeter
- Spike Camp
- + Dip Site
- Drop Point
- ⊗ Fire Origin
- + First Aid Station
- Helibase

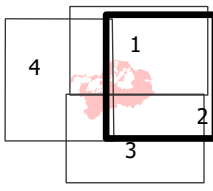
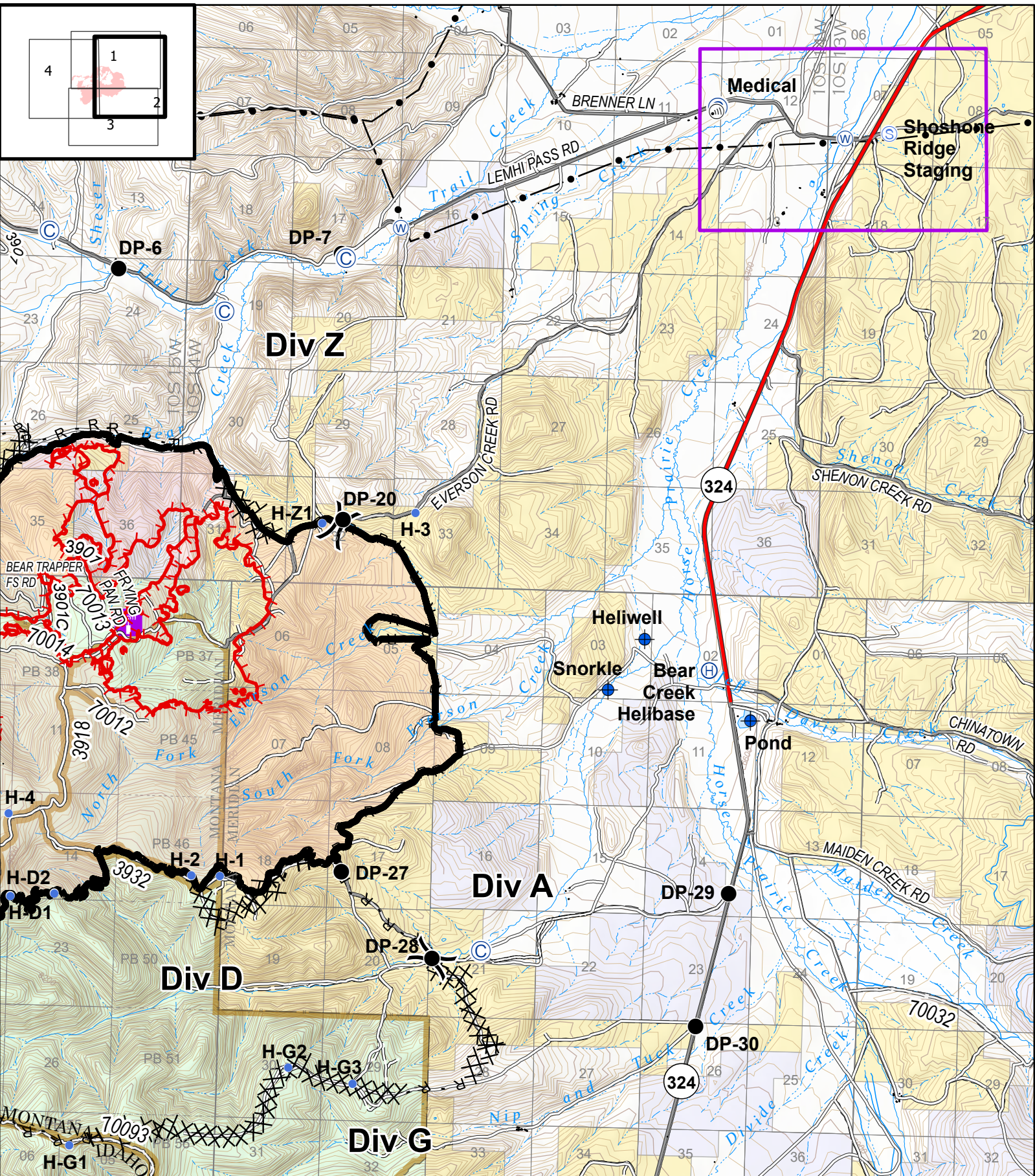


**IAP**  
 Bear Creek  
 MT-BDF-006610  
 August 26, 2020  
 11,236 acres

Fire perimeter updated from  
 Acres from IR on 08/24/2020 @ 0017

0 1 2 Miles

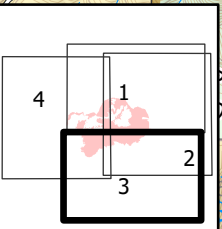
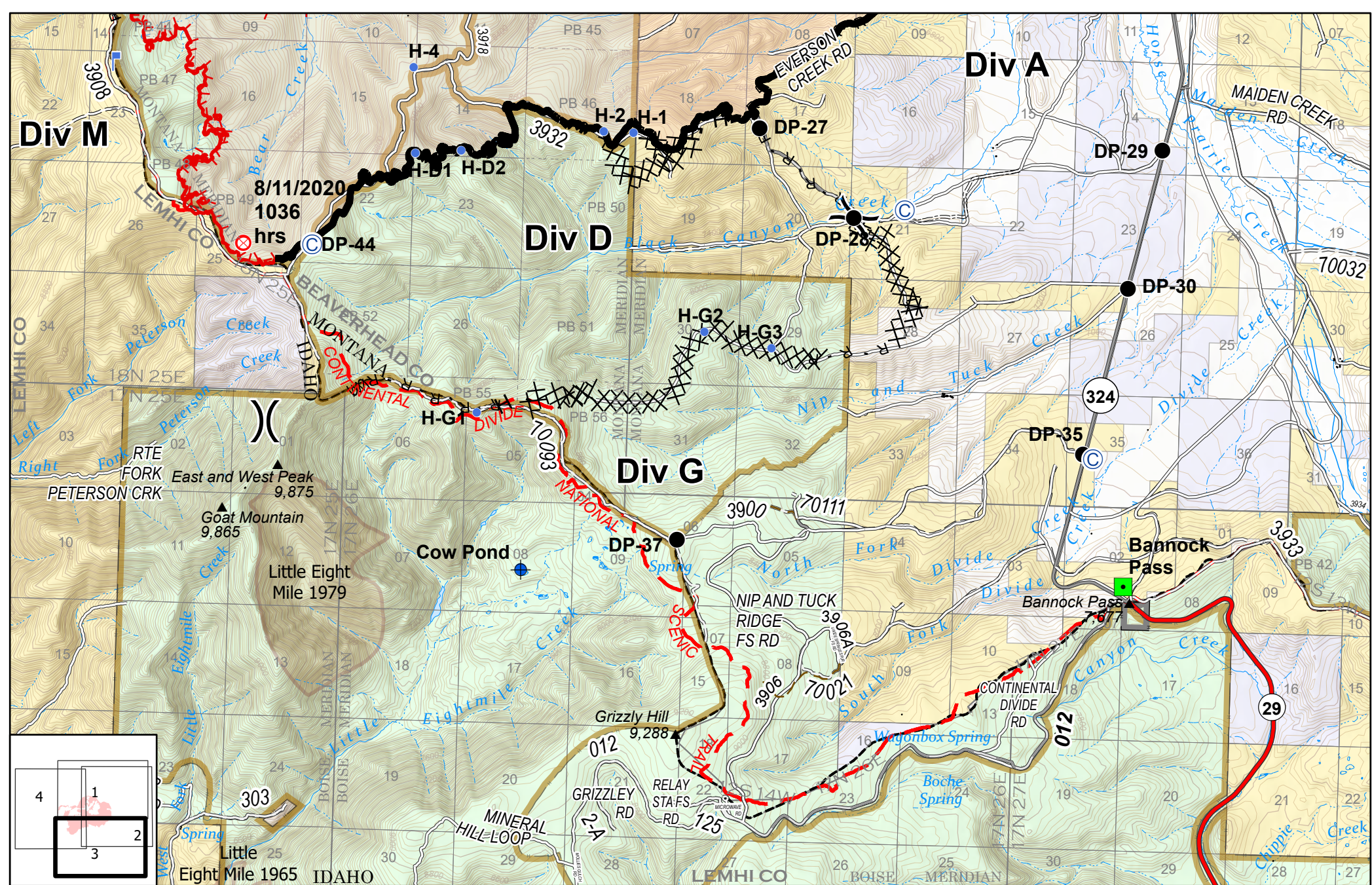
- |                     |                       |                          |                                 |
|---------------------|-----------------------|--------------------------|---------------------------------|
| ⊙ Spike Camp        | Ⓜ Cell Tower          | 🔴 Uncontrolled Fire Edge | 📻 Radio Repeater Site           |
| ⚡ Dip Site          | 🟩 Landmark            | ▬ Contained Line         | — Transmission Lines            |
| ● Drop Point        | 📶 Mobile Weather Unit | ⌘ Completed Dozer Line   | 🏠 Wildfire Daily Fire Perimeter |
| ⚕ First Aid Station | 📍 Staging Area        | H Completed Hand Line    | 🟪 Forward Operating Base        |
| 🚁 Helibase          | 💧 Water Source        | R Road as Completed Line |                                 |
| • Helispot          | ⌋ Division Break      |                          |                                 |



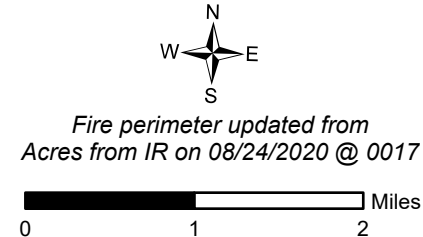
**IAP**  
 Bear Creek  
 MT-BDF-006610  
 August 26, 2020  
 11,236 acres

Fire perimeter updated from IR on 08/24/2020 @ 0017 hrs  
 0 0.5 1 Miles

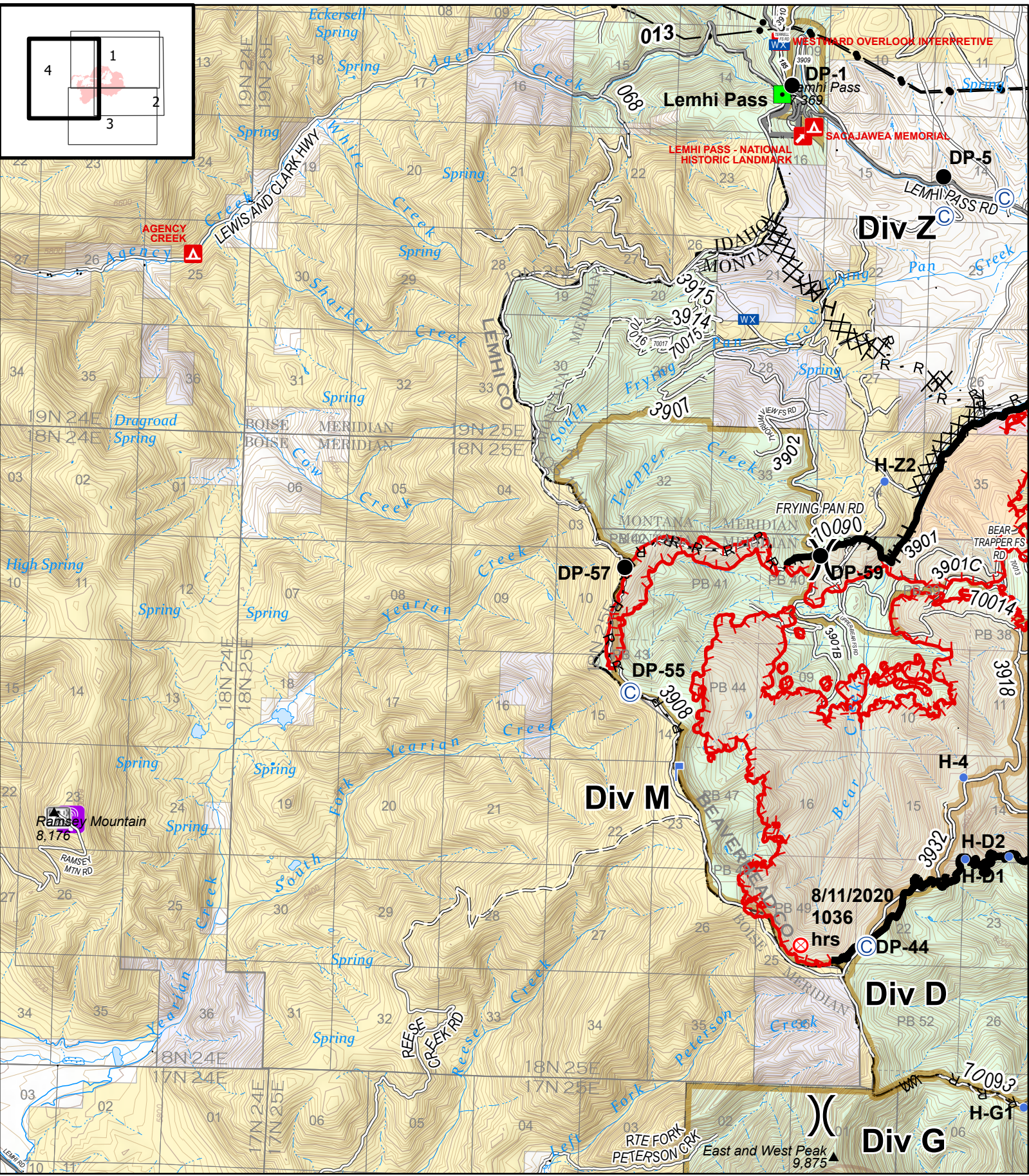
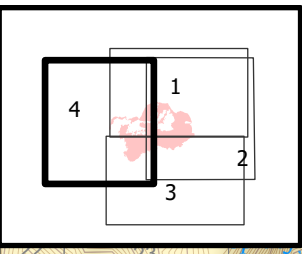
- Spike Camp
- Helispot
- Uncontrolled Fire Edge
- Road Repair
- Dip Site
- Cell Tower
- Contained Line
- Wildfire Daily Fire Perimeter
- Drop Point
- Staging Area
- Completed Dozer Line
- Radio Repeater Site
- First Aid Station
- Water Source
- Completed Hand Line
- Transmission Lines
- Helibase
- Division Break
- Road as Completed Line
- Forward Operating Base



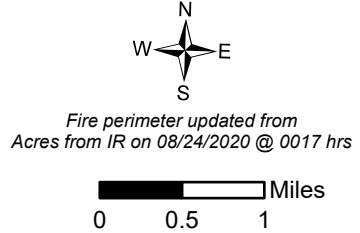
**IAP**  
 Bear Creek  
 MT-BDF-006610  
 August 26, 2020  
 11,236 acres



- |               |                          |                                    |
|---------------|--------------------------|------------------------------------|
| ⊙ Spike Camp  | ⬮ Lookout                | H Completed Hand Line              |
| ⬮ Dip Site    | ) Division Break         | R Road as Completed Line           |
| ● Drop Point  | — Uncontrolled Fire Edge | ⋯ Fire Break Planned or Incomplete |
| ⊗ Fire Origin | — Contained Line         | ⋯ Road Repair                      |
| ⬮ Helispot    | ⊗ Completed Dozer Line   | ■ Wildfire Daily Fire Perimeter    |
| ■ Landmark    |                          |                                    |



**IAP**  
 Bear Creek  
 MT-BDF-006610  
 August 26, 2020  
 11,236 acres



- |               |                          |                                    |
|---------------|--------------------------|------------------------------------|
| ● Spike Camp  | ☒ Mobile Weather Unit    | R Road as Completed Line           |
| ● Drop Point  | )) Division Break        | M Fire Break Planned or Incomplete |
| ⊗ Fire Origin | ▬ Uncontrolled Fire Edge | ▭ Wildfire Daily Fire Perimeter    |
| • Helispot    | ▬ Contained Line         | ☎ Cellular Towers                  |
| ■ Landmark    | XX Completed Dozer Line  | 📻 Radio Repeater Site              |
| ⚡ Lookout     | H Completed Hand Line    |                                    |