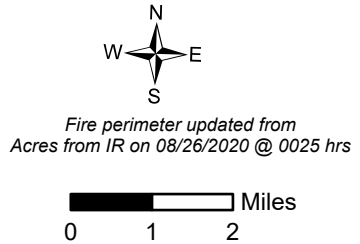
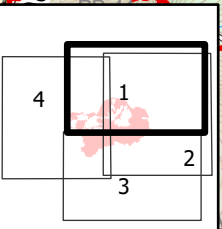
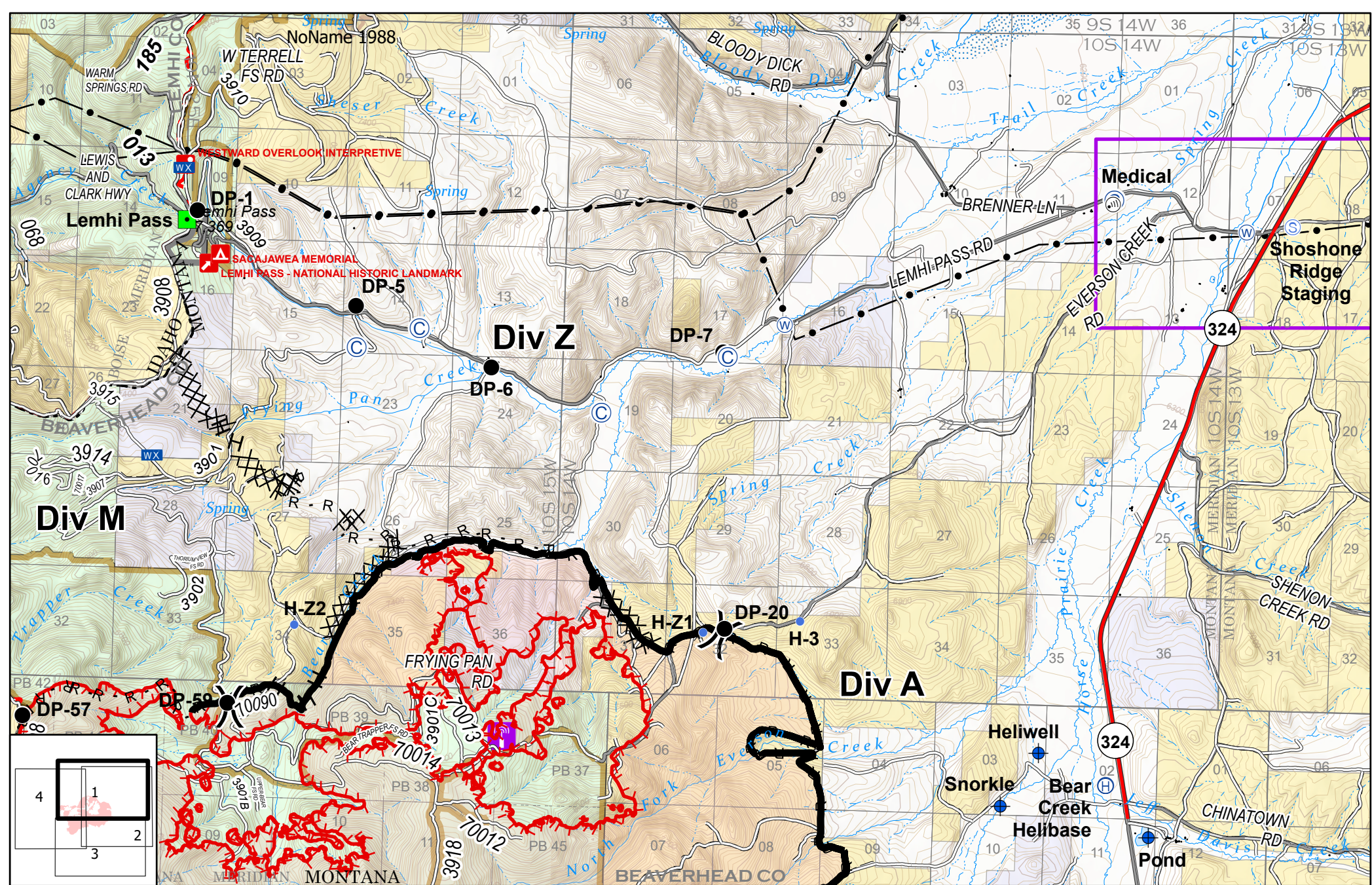


IAP Index
 Bear Creek
 MT-BDF-006610
 August 27, 2020
 11,590 acres



- Uncontrolled Fire Edge
- Contained Line
- Completed Dozer Line
- H Completed Hand Line
- R Road as Completed Line
- / Fire Break Planned or Incomplete
- = Road Repair
- Wildfire Daily Fire Perimeter
- Spike Camp
- + Dip Site
- Drop Point
- ⊗ Fire Origin
- First Aid Station
- Helibase

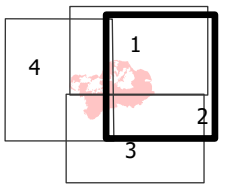
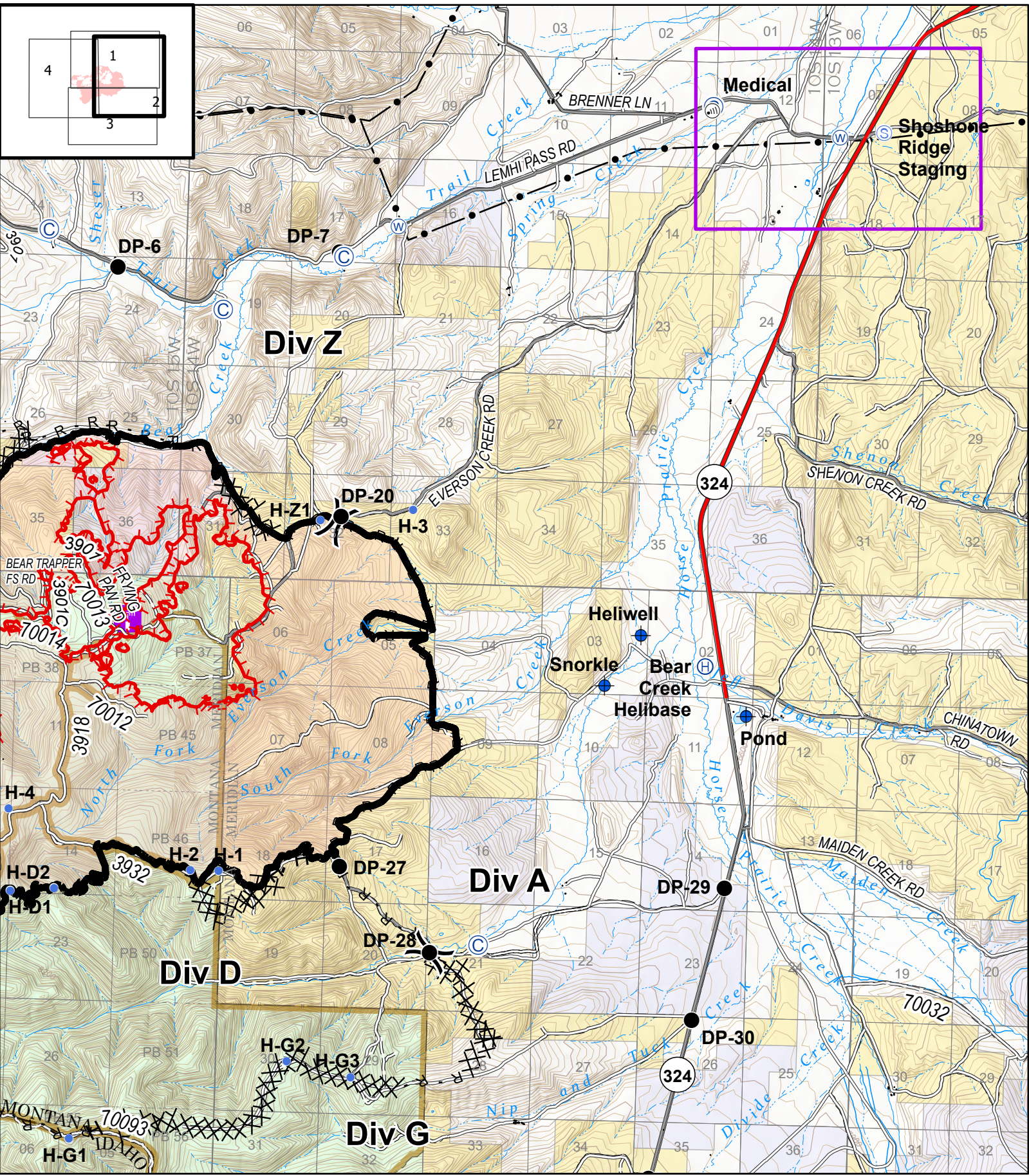


IAP
Bear Creek
 MT-BDF-006610
 August 27, 2020
 11,590 acres

Fire perimeter updated from
 Acres from IR on 08/26/2020 @ 0025



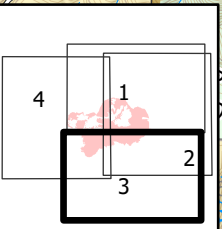
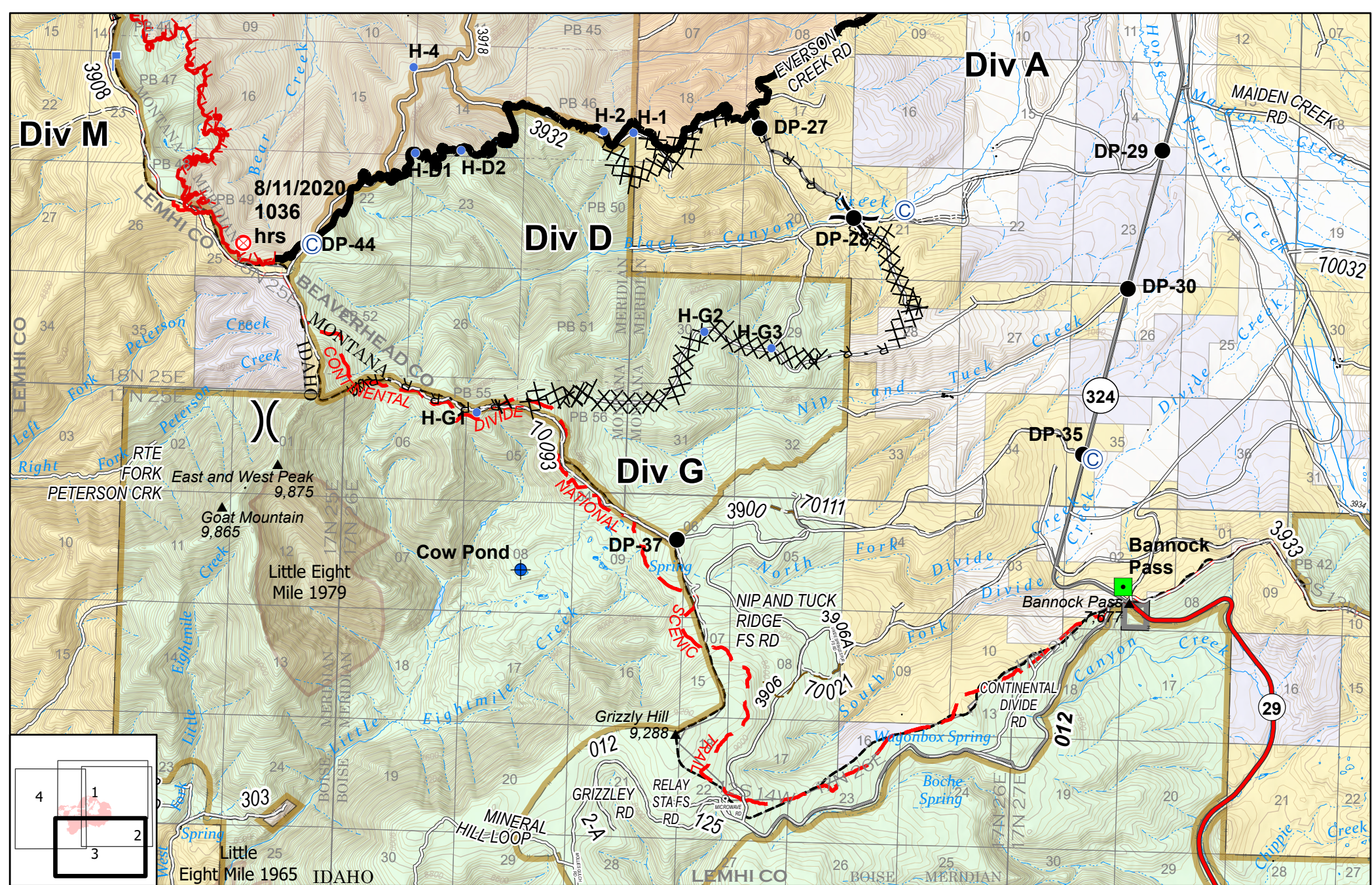
- | | | | |
|---------------------|-----------------------|--------------------------|---------------------------------|
| Ⓞ Spike Camp | Ⓜ Cell Tower | — Uncontrolled Fire Edge | Ⓜ Radio Repeater Site |
| Ⓡ Dip Site | ■ Landmark | — Contained Line | — Transmission Lines |
| ● Drop Point | Ⓜ Mobile Weather Unit | Ⓧ Completed Dozer Line | — Wildfire Daily Fire Perimeter |
| Ⓡ First Aid Station | Ⓜ Staging Area | H Completed Hand Line | — Forward Operating Base |
| Ⓡ Helibase | Ⓜ Water Source | R Road as Completed Line | |
| ● Helispot | Ⓜ Division Break | | |



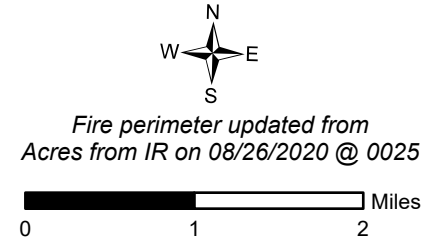
IAP
 Bear Creek
 MT-BDF-006610
 August 27, 2020
 11,590 acres

Fire perimeter updated from IR on 08/26/2020 @ 0025 hrs

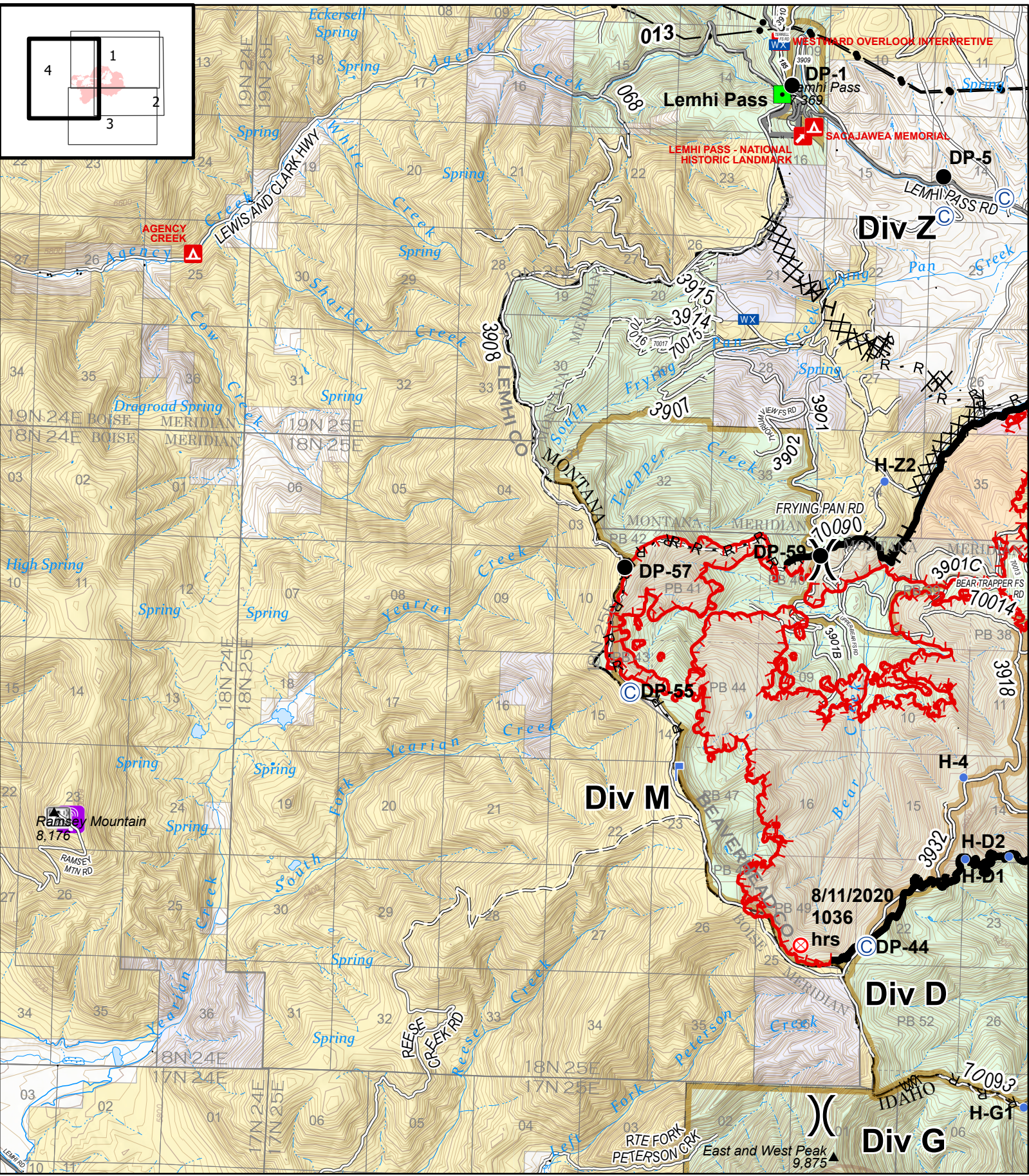
- | | | | |
|---------------------|------------------|--------------------------|---------------------------------|
| Ⓞ Spike Camp | ● Helispot | — Uncontrolled Fire Edge | == Road Repair |
| Ⓧ Dip Site | Ⓜ Cell Tower | — Contained Line | ▭ Wildfire Daily Fire Perimeter |
| ● Drop Point | Ⓢ Staging Area | ⊗ Completed Dozer Line | ⓡ Radio Repeater Site |
| Ⓡ First Aid Station | Ⓦ Water Source | Ⓜ Completed Hand Line | — Transmission Lines |
| Ⓜ Helibase | Ⓟ Division Break | Ⓡ Road as Completed Line | ▭ Forward Operating Base |



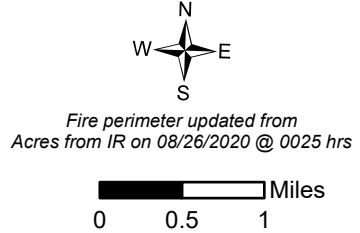
IAP
 Bear Creek
 MT-BDF-006610
 August 27, 2020
 11,590 acres



- | | | | | | |
|---|-------------|-----|------------------------|---|----------------------------------|
| ⊙ | Spike Camp | ⌚ | Lookout | H | Completed Hand Line |
| ⬢ | Dip Site | ⌘ | Division Break | R | Road as Completed Line |
| ● | Drop Point | — — | Uncontrolled Fire Edge | ⋯ | Fire Break Planned or Incomplete |
| ⊗ | Fire Origin | — | Contained Line | ⋯ | Road Repair |
| ⬤ | Helispot | ⌘ | Completed Dozer Line | ■ | Wildfire Daily Fire Perimeter |
| ■ | Landmark | | | | |



IAP
 Bear Creek
 MT-BDF-006610
 August 27, 2020
 11,590 acres



- | | | |
|---------------|--------------------------|------------------------------------|
| ● Spike Camp | ☒ Mobile Weather Unit | R Road as Completed Line |
| ● Drop Point |)) Division Break | M Fire Break Planned or Incomplete |
| ⊗ Fire Origin | ▬ Uncontrolled Fire Edge | ▭ Wildfire Daily Fire Perimeter |
| • Helispot | ▬ Contained Line | ☎ Cellular Towers |
| ■ Landmark | XX Completed Dozer Line | 📻 Radio Repeater Site |
| ⚡ Lookout | H Completed Hand Line | |