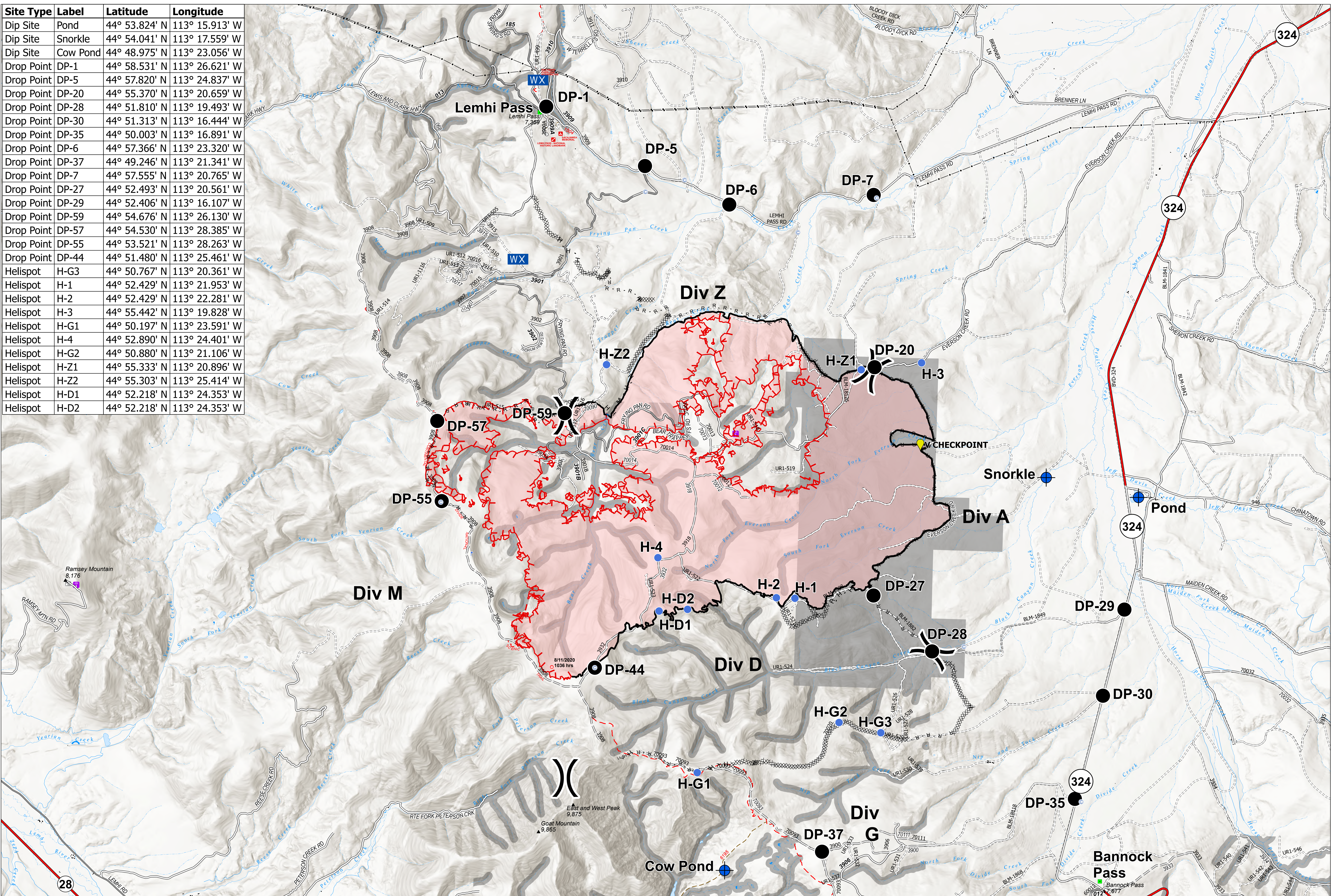
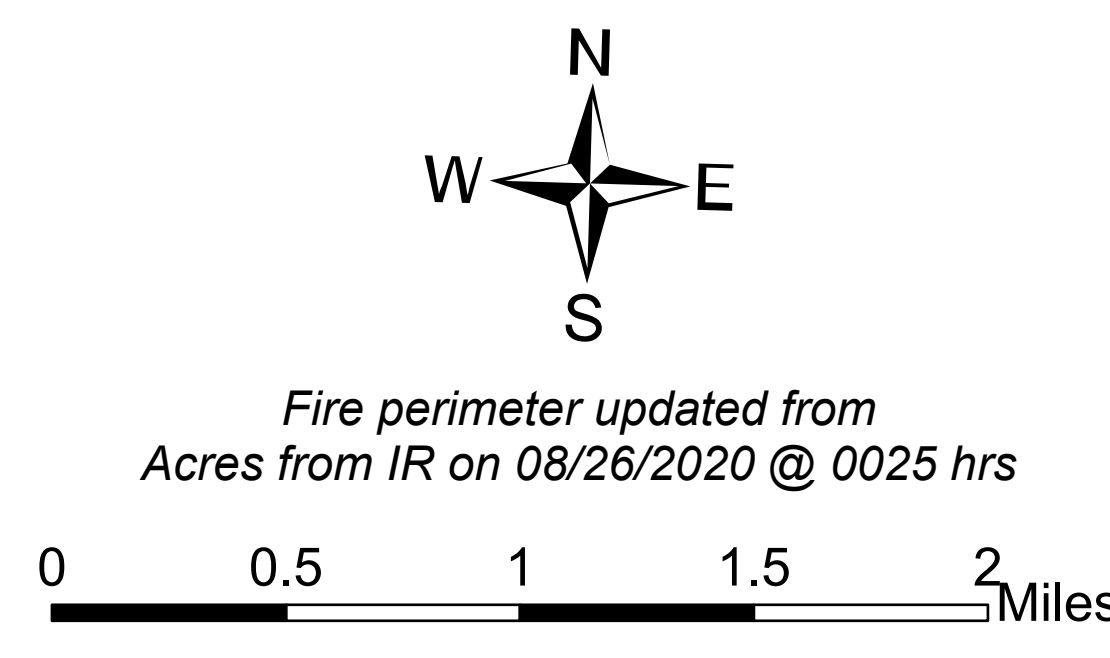


Site Type	Label	Latitude	Longitude
Dip Site	Pond	44° 53.824' N	113° 15.913' W
Dip Site	Snorkle	44° 54.041' N	113° 17.559' W
Dip Site	Cow Pond	44° 48.975' N	113° 23.056' W
Drop Point	DP-1	44° 58.531' N	113° 26.621' W
Drop Point	DP-5	44° 57.820' N	113° 24.837' W
Drop Point	DP-20	44° 55.370' N	113° 20.659' W
Drop Point	DP-28	44° 51.810' N	113° 19.493' W
Drop Point	DP-30	44° 51.313' N	113° 16.444' W
Drop Point	DP-35	44° 50.003' N	113° 16.891' W
Drop Point	DP-6	44° 57.366' N	113° 23.320' W
Drop Point	DP-37	44° 49.246' N	113° 21.341' W
Drop Point	DP-7	44° 57.555' N	113° 20.765' W
Drop Point	DP-27	44° 52.493' N	113° 20.561' W
Drop Point	DP-29	44° 52.406' N	113° 16.107' W
Drop Point	DP-59	44° 54.676' N	113° 26.130' W
Drop Point	DP-57	44° 54.530' N	113° 28.385' W
Drop Point	DP-55	44° 53.521' N	113° 28.263' W
Drop Point	DP-44	44° 51.480' N	113° 25.461' W
Helispot	H-G3	44° 50.767' N	113° 20.361' W
Helispot	H-1	44° 52.429' N	113° 21.953' W
Helispot	H-2	44° 52.429' N	113° 22.281' W
Helispot	H-3	44° 55.442' N	113° 19.828' W
Helispot	H-G1	44° 50.197' N	113° 23.591' W
Helispot	H-4	44° 52.890' N	113° 24.401' W
Helispot	H-G2	44° 50.880' N	113° 21.106' W
Helispot	H-Z1	44° 55.333' N	113° 20.896' W
Helispot	H-Z2	44° 55.303' N	113° 25.414' W
Helispot	H-D1	44° 52.218' N	113° 24.353' W
Helispot	H-D2	44° 52.218' N	113° 24.353' W



Air Ops
 Bear Creek
 MT-BDF-006610
 August 28, 2020
 11,590 acres



- | | | | | | |
|-------------|------------------------|----------------------------------|---|--|--------------------------|
| Camp | Lookout | Completed Dozer Line | USGS Mountain Features | Highway | Campground |
| Dip Site | Mobile Weather Unit | Completed Hand Line | Structure Footprints | Roads, Paved | HIFLD Cellular Towers |
| Drop Point | Water Source | Road as Completed Line | Gravel Road, Suitable for Passenger Car | Roads, Other | Radio Repeater Site |
| Fire Origin | Division Break | Fire Break Planned or Incomplete | Dirt Road, Suitable for Passenger Car | USFS Trails | Transmission Lines |
| Helispot | Uncontrolled Fire Edge | Road Repair | Road, Not Maintained for Passenger Car | Continental Divide National Scenic Trail | Retardant Avoidance Area |
| Landmark | Contained Line | Wildfire Daily Fire Perimeter | | | |

