

114°37'0"W

114°36'0"W

114°35'0"W

46°32'0"N

46°32'0"N

46°31'0"N

46°31'0"N

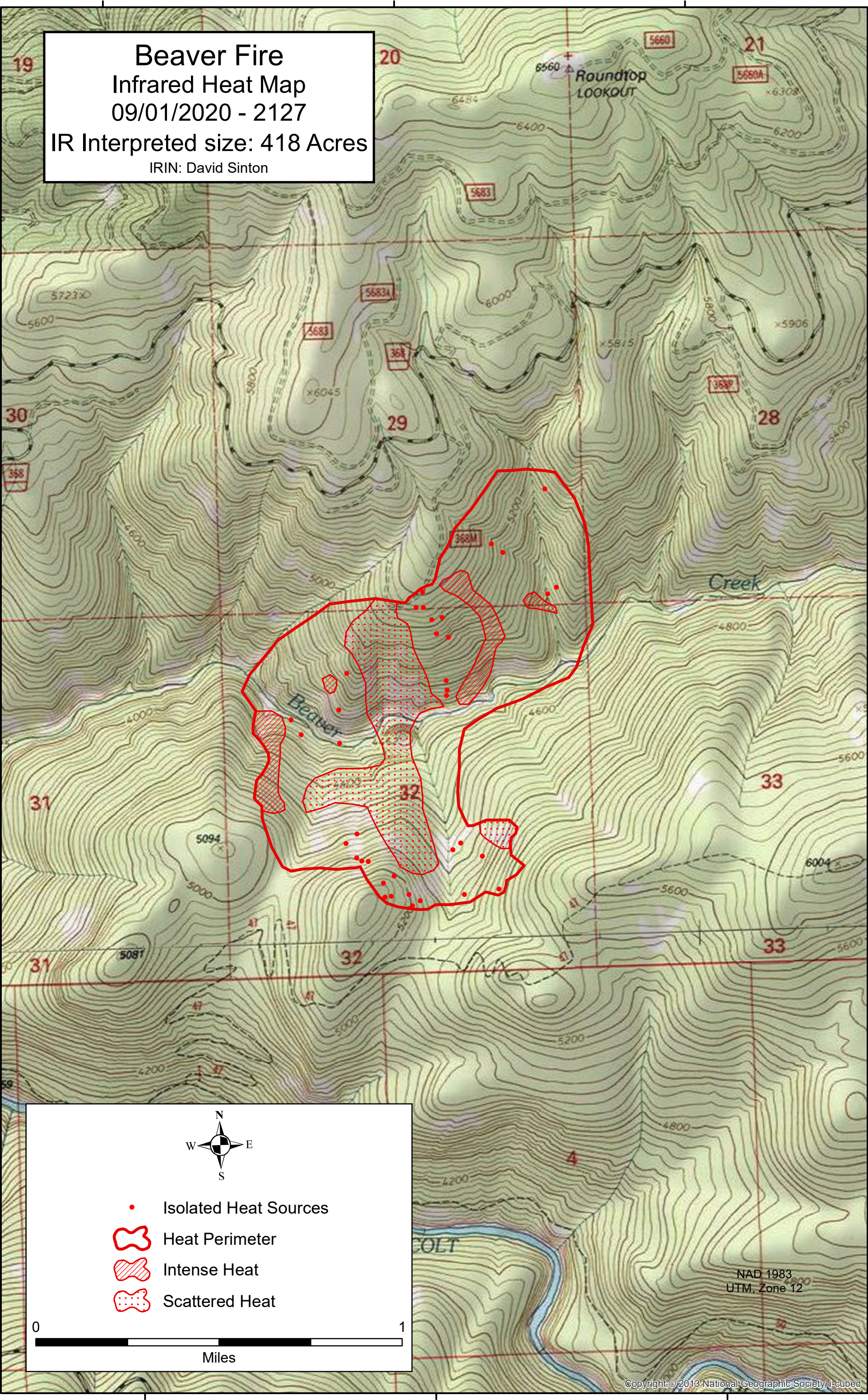
46°30'0"N

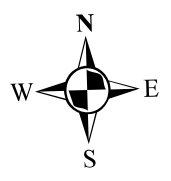



46°30'0"N

46°29'0"N

46°29'0"N

Beaver Fire
 Infrared Heat Map
 09/01/2020 - 2127
 IR Interpreted size: 418 Acres
 IRIN: David Sinton




 • Isolated Heat Sources
 Heat Perimeter
 Intense Heat
 Scattered Heat

0 1
Miles

114°37'0"W

114°36'0"W

114°35'0"W

NAD 1983
UTM, Zone 12