

114°37'0"W

114°36'0"W

114°35'0"W

46°32'0"N

46°32'0"N

46°31'0"N

46°31'0"N

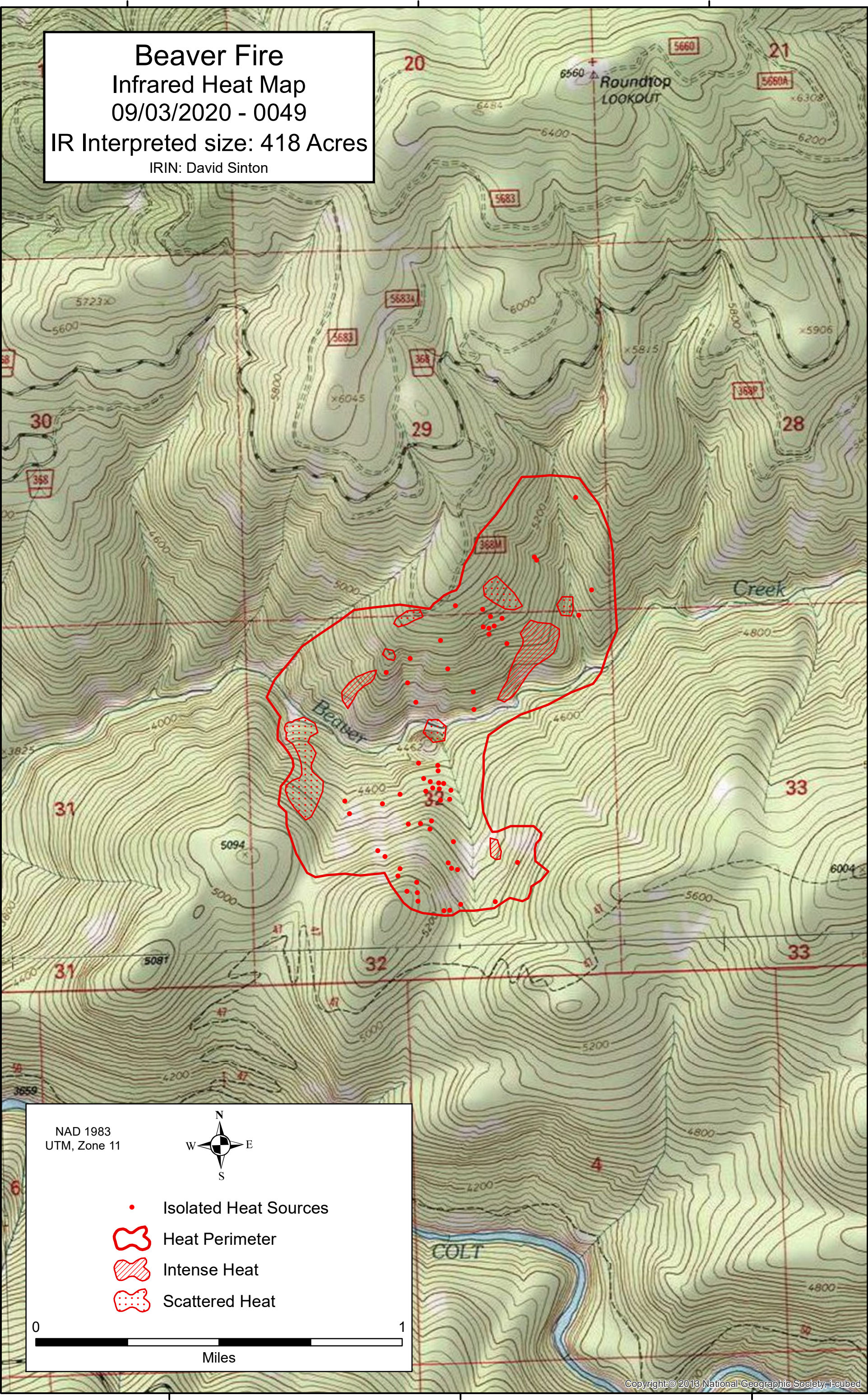
46°30'0"N

46°30'0"N

46°29'0"N

46°29'0"N

Beaver Fire
 Infrared Heat Map
 09/03/2020 - 0049
 IR Interpreted size: 418 Acres
 IRIN: David Sinton



NAD 1983
 UTM, Zone 11

- Isolated Heat Sources
- Heat Perimeter
- Intense Heat
- Scattered Heat

0 1

Miles

114°37'0"W

114°36'0"W

114°35'0"W