

114°37'0"W

114°36'0"W

114°35'0"W

46°32'0"N

46°32'0"N

46°31'0"N

46°31'0"N

46°30'0"N

46°30'0"N

46°29'0"N

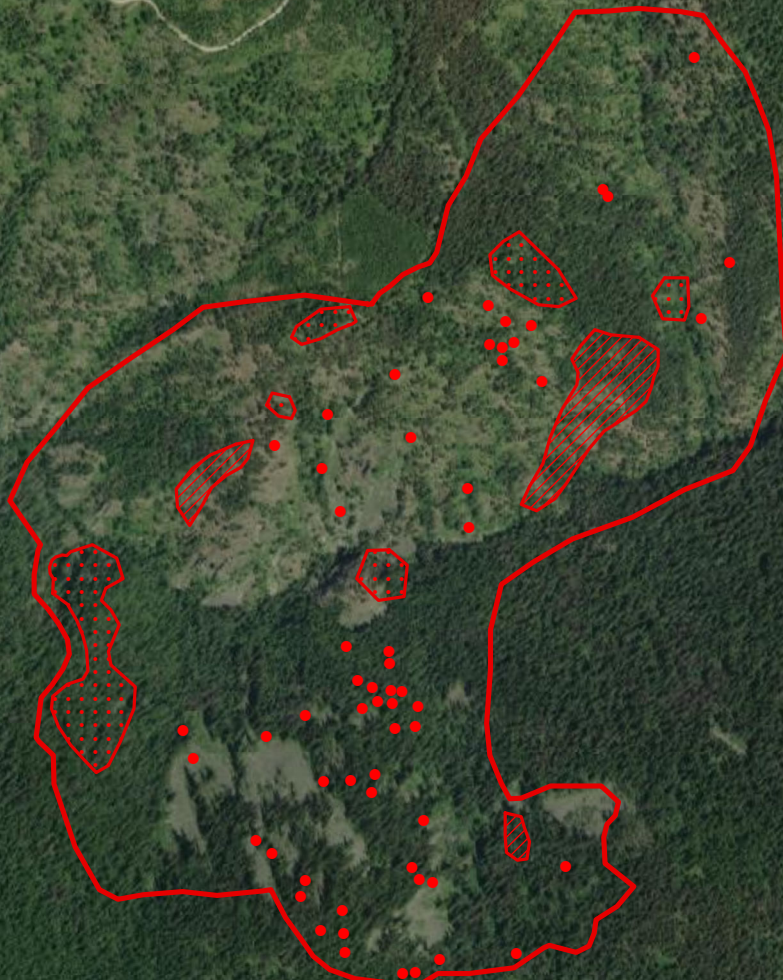
46°29'0"N

114°37'0"W

114°36'0"W




114°35'0"W

Beaver Fire
 Infrared Heat Map
 09/03/2020 - 0049
 IR Interpreted size: 418 Acres
 IRIN: David Sinton



NAD 1983
 UTM, Zone 11



- Isolated Heat Sources
-  Heat Perimeter
-  Intense Heat
-  Scattered Heat



Source: Esri, Maxar, GeoEye, Earthstar Geographics, CNES/Airbus DS, USDA, USGS, AeroGRID, IGN, and the GIS User Community