

Incident Action Plan Bernard

P1NKL420 (0104)

ID-IPF-000533

Idaho Panhandle National Forest-Sandpoint Ranger District



**North Idaho Type III Team
Incident Commander-Rodney Weeks**

0600-2000 Friday September 25, 2020



INCIDENT OBJECTIVES	1. Incident Name Bernard	2. Date 09/24/2020	3. Time 1700
4. Operational Period 09/25/2020 0600-2000 Friday			
5. General Control Objectives for the Incident (include alternatives)			
<p>The highest priority is to protect the safety of fire personnel and human life followed by the protection of private property, reduce impacts to the community of Lakeview, Bayview and Farragut State Park, two large transmission lines (BPA and Avista) and cultural and natural resources.</p> <p>MANAGEMENT OBJECTIVES:</p> <p>Provide for emergency personnel and public safety at all times.</p> <p>Protect property, improvements, and infrastructure.</p> <p>Ensure repopulation takes place in a quick, efficient, and effective manner.</p> <p>Ensure coordinated, timely and accurate release of public information.</p> <p>Foster and maintain relationships with all cooperators and stakeholders.</p> <p>Protect economic, natural, cultural and heritage resources.</p> <p>Maintain fiscal accountability and keep costs commensurate with values at risk.</p>			
6. Operational Period Command Emphasis:			
<p>CONTROL OBJECTIVES:</p> <p>Contain fire to smallest footprint within the private land to:</p> <ul style="list-style-type: none"> • Reduce impacts to private land values. • Reduce the impacts to private property, reduce impacts to the community of Lakeview, Bayview and Farragut State Park, two large transmission lines (BPA and Avista) and cultural and natural resources. • Minimize the exposure of the public and responders to transmission of COVID-19 by following CDC and IPNF measures related to social distancing, masks and cleaning protocols. 			
7. General Safety Message:			
<ul style="list-style-type: none"> - Drink plenty of water - keep hydrated. - Maintain 2:1 work/rest ratio. - Drive with headlights on. - Follow all standard rules and guidelines, refer to IRPG. 			
8. Attachment (mark if attached)			
<input checked="" type="checkbox"/> ICS 202 <input checked="" type="checkbox"/> Fire Behavior Forecast <input checked="" type="checkbox"/> Communication Plan <input checked="" type="checkbox"/> Incident Maps <input checked="" type="checkbox"/> ICS 203 <input checked="" type="checkbox"/> ICS 204 <input checked="" type="checkbox"/> Safety Message <input checked="" type="checkbox"/> Line 9 <input checked="" type="checkbox"/> Weather Forecast <input checked="" type="checkbox"/> ICS 220 <input checked="" type="checkbox"/> ICS 206 <input checked="" type="checkbox"/> Unit Log			
9. Prepared by (Planning Section Chief)		10. Approved by (Incident Commander)	
Monika Wood		Rodney Weeks	

1. Incident Name: Bernard		2. Operational Period: Date From: 09/25/20 Date To: 09/25/20 Time From: 0600 Time To: 2000	
3. Incident Commander(s) and Command Staff:		7. Operations Section:	
IC/UCs	Rodney Weeks	Chief	Dan Helterline
Deputy		Deputy	Renee Kuehner
Safety Officer	Don Garringer/Brad Belmont/Doug Warzauf	Staging Area	
Public Info. Officer	Karen Robinson (T) krobinson@idl.idaho.gov	Branch Director	
Liaison Officer		Deputy	
4. Agency/Organization Representatives:		Division/Group	Alpha Yarrow/Norris (T)
	Name	Division/Group	
USFS AA	Jessie Berner	Division/Group	Structure/Bravo Hansen/Wood (T)
USFS REP	Matt Butler/Glen Palfrey	Division/Group	
IDL REP		Division/Group	
Read Lead	Rob Brassfield/ Carmelita Angeles (T)		
Tech Specialist	Matt Wiebe	Branch Director	
Sheriff		Deputy	
5. Planning Section:		Division/Group	
Chief	Mike Denney	Division/Group	
Deputy		Division/Group	
Resources Unit	Monika Wood (T) monika_wood@firenet.gov	Division/Group	
Situation Unit		Division/Group	
Documentation Unit			
Demobilization Unit	Hailey Frank (T)	Branch Director	
Technical Specialists	Matt Hulbert	Deputy	
GIS	Joanne Bonn (T) joanne_bonn@firenet.gov	Division/Group	
FBAN		Division/Group	
Incident Meteorologist		Division/Group	
6. Logistics Section:		Division/Group	
Chief	Kevin Clark	Division/Group	
Deputy	Penny Casey (T)		
Supply Branch		Air Ops Branch Dir.	Billie Washburn
Ordering Manager	Travis Tyler		
Supply Unit			
Base Camp Manager	Lance Collier (T)	8. Finance/Administration Section:	
Base Camp Manager		Chief	Tracy Hicks
		Deputy	
Director		Time Unit	
Communications Unit		PTRC	
Medical Unit		PTRC	
Food Unit		Cost Unit	
9. Prepared by: Name: M. Wood _____ Position/Title: <u>RESL (T)</u> Signature: <i>Monika Wood</i>			

DIVISION ASSIGNMENT LIST			1. Branch		2. Division/Group Alpha		
3. Incident Name Bernard			4. Operational Period Date: September 25, 2020 Time: Day 0600 - 2000				
5. Operations Personnel							
Operations Chief		Dan Helterline/Renee Kuehner		Division/Group Supervisor		Brian Yarrow/ Paul Norris (T)	
Branch Director				Air Attack Supervisor			
Safety Officer		Don Garringer/Brad Belmont/Doug Warzauf					
6. Resources Assigned this Period							
	Strike Team/Task Force/ Resource Designator	Leader	Number Persons	Trans. Needed	Drop Off PT./Time	Pick Up PT./Time	Tentative Last Work Day
1.							
2.	C-7 Trapicon 2	Craig McDonald	18	N	DP1/0800	DP1/2000	10/01
3.							
4.	E-642	Krier	4	N	DP1/0800	DP1/2000	9/25
5.							
6.	E-54 TREE Master & Rapid Shred	Dan Julian	2	N	DP1/0800	DP1/2000	9/06
7.							
8.							
9.							
10.							
11.							
12.							
13.							
14.							
15.							
16.							
17.							
18.							
19.	O-58 EMTF	Bryan Joyce	1	N	DP1/0800	DP1/2000	10/04
7. Control Operations •							
8. Special Instructions <ul style="list-style-type: none"> • Assess need for contingency lines • Prepare for firing and continue firing as needed. Utilize equipment where appropriate utilizing most favorable terrain and fuels. 							
9. Division/Group Communication Summary							
Function	Frequency	System	Channel	Function	Frequency	System	Channel
Command Repeater	See Comm Plan			Command	See Comm Plan		
TAC	See Comm Plan			Air To Ground	See Comm Plan		
Prepared by (Resource Unit Leader): M. Wood			Approved by (Planning Section Chief): <i>Monika Wood</i>			Date September 24, 2020	Time 1700

DIVISION ASSIGNMENT LIST	1. Branch	3. Division/Group Bravo/Structure
	3. Incident Name Bernard	

4. Operational Period Date: September 25, 2020 Time: Day 0600 - 2000	
---	--

5. Operations Personnel			
Operations Chief	Dan Helterline/Renee Kuehner	Division/Group Supervisor	Reny Hansen/ Scott Wood
Branch Director		Air Attack Supervisor	
Safety Officer	Don Garringer/Brad Belmont/Doug Warzauf		

6. Resources Assigned this Period

Strike Team/Task Force/ Resource Designator	Leader	Number Persons	Trans. Needed	Drop Off PT./Time	Pick Up PT./Time	Tentative Last Work Day
1. O-49 HEQB	Dennis Gillmer	1	N	DP1/0800	DP1/2000	
2.						
3.						
4.						
5. E-43 Forwarder John Jump	Casey Jump	1	N	DP1/0800	DP1/2000	
6. E-4 Excavator T2 Akre		1	N	DP1/0800	DP1/2000	9/24
7. E-53 Forwarder Hester	Joe Hester	1	N	DP1/0800	DP1/2000	10/04
8.						
9.						
10.						
11.						
12.						
13.						
14.						
15. O-57 EMTF	Josh Ambach	1	N	DP1/0800	DP1/2000	10/04

9. Control Operations
- Continue indirect line construction improvements.
 - Prepare for firing and continue firing as needed. Protect infrastructure.
 - Utilize water and aircraft to keep fire above FS road 2707, as needed.
 - Put together and recon future opportunities for contingency lines around Lakeview community.

10. Special Instructions

-

9. Division/Group Communication Summary

Function	Frequency	System	Channel	Function	Frequency	System	Channel
Command Repeater	See Comm Plan			Command	See Comm Plan		
TAC	See Comm Plan			Air To Ground	See Comm Plan		

Prepared by (Resource Unit Leader): M. Wood	Approved by (Planning Section Chief): <i>Monika Wood</i>	Date September 24, 2020	Time 1700
---	---	-----------------------------------	---------------------

DIVISION ASSIGNMENT LIST

1. Branch

4. Division/Group
Bravo/Structure

3. Incident Name
Bernard

4. Operational Period
Date: **September 24, 2020** Time: **Day 0600 - 2000**

5. **Operations Personnel**

Operations Chief	Dan Helterline/Renee Kuehner	Division/Group Supervisor	Reny Hansen Scott Wood
Branch Director		Air Attack Supervisor	
Safety Officer	Don Garringer/Brad Belmont/Doug Warzauf		

6. **Resources Assigned this Period**

	Strike Team/Task Force/ Resource Designator	Leader	Number Persons	Trans. Needed	Drop Off PT./Time	Pick Up PT./Time	Tentative Last Work Day
1.	C-5 IL-1 (Crew85)	Dave Griffith	20	N	DP1/0800	DP1/2000	9/27
2.							
3.							
4.	E-52 ENG E-2262	Corey Mix	3	N	DP1/0800	DP1/2000	10/03
5.	E-10 ENG6 E-912	Long	4	N	DP1/0800	DP1/2000	10/03
6.	E-49 STJ ENG-621	Ron Kelsey	5	N	DP1/0800	DP1/2000	10/01
7.							
8.							
9.							
10.							
11.							
12.							
13.							

11. Control Operations
- Continue structure prep around Red Cloud and Big Buck prep and install sprinklers at Gold Creek Resort.
 - Complete structure assessments
 - Evaluate Lakeview for future prep needs.

12. Special Instructions
-

9. **Division/Group Communication Summary**

Function	Frequency	System	Channel	Function	Frequency	System	Channel
Command Repeater	See Comm Plan			Command	See Comm Plan		
TAC	See Comm Plan			Air To Ground	See Comm Plan		

Prepared by (Resource Unit Leader):
M. Wood

Approved by (Planning Section Chief):
Monika Wood

Date
September 24, 2020

Time
1700

FNUS56 KOTX 242151
FWFOTX

Fire Weather Planning Forecast for Eastern Washington and North Idaho
National Weather Service Spokane WA
251 PM PDT Thu Sep 24 2020

.DISCUSSION...

Overnight rain showers expected over mountains. Another system arrives Friday with additional wetting rains for most districts. Gusty afternoon winds around 40 MPH expected across portions of the Basin. Strong high pressure next week will lead to temperatures warming to above normal with a prolonged stretch of dry weather.

Forecasts for 20 foot wind speeds (valleys and ridge tops) are 10 minute averages reflecting RAWs wind.

IDZ101-251315-
Northern and Central Idaho Panhandle (Zone 101)-
Including the cities of St. Maries, Rathdrum Prairie,
Silver Valley, Bonners Ferry, and Priest Lake
251 PM PDT Thu Sep 24 2020

.Tonight...

- * Sky/Weather.....Partly cloudy then becoming mostly cloudy.
Chance of rain showers in the evening, then slight chance of rain showers overnight.
- * LAL.....1.
- * Min Temperature....40-50.
- * 24 hr Trend.....4 degrees cooler.
- * Max Humidity.....81-100 percent.
- * 24 hr Trend.....Unchanged.
- * Humidity Recovery...Excellent.
- * 20-foot winds.....
 - * Valleys/Lwr Slopes...South 3 to 11 mph.
 - * Ridges/Upr Slopes...Southwest 5 to 13 mph with gusts to around 25 mph.
- * Haines Index.....2 or very low.
- * Mixing Height.....3500 ft AGL falling to near surface.
- * Transport Winds....Southwest 10 to 20 mph.
- * CWR (> 0.10 IN)....10 percent.

.FRIDAY...

- * Sky/Weather.....Mostly cloudy. Chance of rain showers in the morning, then rain showers in the afternoon.
- * LAL.....1.
- * Max Temperature.....51-58 valleys and 43-53 mountains.
- * 24 hr Trend.....6 degrees cooler.

- * Min Humidity.....71-90 percent.
- * 24 hr Trend.....30 percent wetter valleys, and 25 percent wetter mountains.
- * 20-foot winds.....
- * Valleys/Lwr Slopes...South 3 to 14 mph. Gusts up to 30 mph in the afternoon.
- * Ridges/Upr Slopes....Southwest 5 to 16 mph with gusts to around 30 mph.
- * Haines Index.....2 or very low.
- * Mixing Height.....3000 ft AGL.
- * Transport Winds.....Southwest 10 to 20 mph.
- * CWR (> 0.10 IN).....90 percent.

.FRIDAY NIGHT...

- * Sky/Weather.....Mostly cloudy. Rain showers in the evening, then chance of rain showers overnight.
- * LAL.....1.
- * Min Temperature.....37-45.
- * Max Humidity.....81-100 percent.
- * Humidity Recovery...Excellent.
- * 20-foot winds.....
- * Valleys/Lwr Slopes...Southwest 6 to 14 mph with gusts to around 30 mph.
- * Ridges/Upr Slopes....Southwest 8 to 17 mph with gusts to around 35 mph.
- * Haines Index.....2 or very low.
- * Mixing Height.....Falling to near surface.
- * Transport Winds.....Southwest 10 to 20 mph.
- * CWR (> 0.10 IN).....80 percent.

.SATURDAY...

- * Sky/Weather.....Partly sunny. Chance of rain showers in the morning, then slight chance of rain showers in the afternoon.
- * LAL.....1.
- * Max Temperature.....53-62 valleys and 43-53 mountains.
- * Min Humidity.....45-60 percent valleys and 60-75 percent mountains.
- * 20-foot winds.....
- * Valleys/Lwr Slopes...Southwest 4 to 10 mph.
- * Ridges/Upr Slopes....Southwest 5 to 11 mph with gusts to around 25 mph.
- * Haines Index.....2 or very low.
- * Mixing Height.....7500 ft AGL.
- * Transport Winds.....West 15 to 25 mph.
- * CWR (> 0.10 IN).....20 percent.

.Forecast Days 3 Through 7.....

.SUNDAY...Partly cloudy. Slight chance of rain showers. Lows 36 to 43. Highs 57 to 66 valleys...48 to 58 mountains. Southwest wind up to 5 mph.

.MONDAY...Mostly clear. Lows 39 to 47. Highs 64 to 73 valleys...56 to 66 mountains. Southwest wind up to 5 mph.

.TUESDAY...Mostly clear. Lows 43 to 50. Highs 69 to 79 valleys...62 to 72 mountains. Northeast wind up to 5 mph.

.WEDNESDAY THROUGH THURSDAY...Mostly clear. Lows 44 to 52. Highs
70 to 80 valleys...63 to 73 mountains.

.8 to 14 Day Outlook for Oct 02 - 08 2020

Above Normal Temperatures and Below Normal Precipitation.

INCIDENT RADIO COMMUNICATIONS PLAN		1. Incident Name: Bernard		2. Date/Time Prepared 09/24/2020		3. Operational Period Date/Time 09/25/2020	
CH	Rx	RX CG	TX	TX CG	LABEL	BAND	
1							
2	173.6250		173.6250		COM USE 3	TACTICAL	
3							
4							
5							
6							
7							
8	172.4000	107.2	165.4875	100.0	Little Blacktail	FS Repeater	
9							
10							
11							
12							
13							
14							
15	168.5375		168.5375		Air to Ground	A/G 54 (primary)	
16							
5. Prepared by (Communications Unit) Billie Washburn							

SAFETY MESSAGE

BERNARD

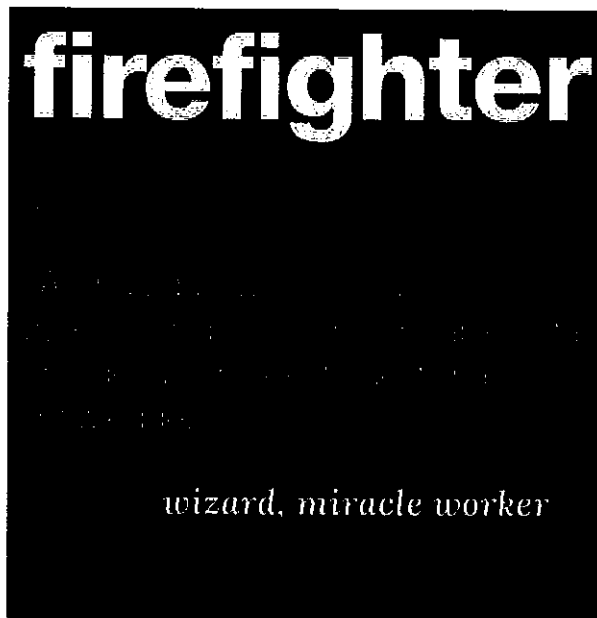
9/25/2020

Major Hazards and Risks:

- 1) **TRANSITION:** Know what is going on around you. Know who your boss is and what your job is.
- 2) **DRIVING:** Driving is still a major concern. Not just at the fire but also your travel home. Have a plan for where you are going and have multiple drivers.
- 3) **WEATHER :** The weather has getting cooler and wetter. Be prepared and stay healthy

**GRAVITY WILL ALWAYS CULMINATE AT
THE BOTTOM. THINGS ARE WINDING D**

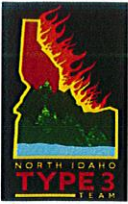
*O
W
N*



***THAT MEANS WE MUST REMAIN EVER
VIGILANT TO COMPLACENCY, LET'S NOT
DO THE STUPID THINGS THAT HURT.***

THANKS FROM ALL OF US FOR YOUR "SAFE WORK" EFFORTS

SAFETY OFFICER; Brad Belmont, Don Garringer, Doug Warzauf



MEDICAL PLAN	1. INCIDENT NAME	2. DATE PREPARED	3. TIME PREPARED	4. OPERATIONAL PERIOD
	Bernard	9/24/2020	1000	9/25/2020

5. INCIDENT MEDICAL AID STATIONS

MEDICAL AID STATIONS	LOCATION	PARAMEDICS	
		YES	NO
Josh Amrbach EMT Line EMT	Assigned by Division needs		X-EMT
Bryan Joyce ALS Line Paramedic	Assigned by Division needs	X ALS	
Toby Johansson LWD 9/30	Base Camp EMT 1-406-207-6419		X-EMT

6. TRANSPORTATION

A. AMBULANCE SERVICES

NAME	ADDRESS	PHONE	PARAMEDICS	
			YES	NO
KCEMSS	4381 West Seltice Way Coeur D' Alene Idaho 83814	911	X	
H9 (Approved)	47 56.125 x 116 30.548			
H10 (Approved)	47 57.030 x 116 27.270			

B. AIR AMBULANCES

NAME	Phone	PARAMEDICS	
		YES	NO
Life Flight Type 3 ship	1(800) 232-0911 911 Sandpoint Helicopter #83 20 min, Spokane #15 30 min. Call through CDA Dispatch	X	
Two Bear Air Short Haul	4450 Airport Frontage Rd. Kalispell, Mt. 59901 1-406-755-4297 Call CDA Dispatch to have them requested out of Flathead County 911 center		X

7. HOSPITALS

NAME	GPS Datum WGS 84	TRAVEL TIME		PHONE	HELIPAD		BURN CENTER	
		AIR	GRND		YES	NO	YES	NO
Kootenai Health Coeur d' Alene, Idaho	LAT:47 41 45.658 N LONG 116 47 41.684 W VHF:	30 min	100 min	208.666-3000	X			
Bonner General Sandpoint, Idaho	LAT:48 16.650 LONG 116 32.980 VHF:	30 min	1 hour	208.263.1441	X			
Sacred Heart Medical Spokane, Washington	LAT:47 38.500 LONG 117 24.800 VHF:	45 min	2 hour	509.474.3131	X			
Harbor View Medical Seattle, Washington	LAT:47 36.238 LONG 122 19.461 VHF:	2 hours	5 hours		X		X	

8. MEDICAL EMERGENCY PROCEDURES

Upon occurrence of a "Major Medical" or accident involving significant injury on the fire line, the closest DIVS should respond directly to the scene to take control of the situation and direct necessary actions. If the DIVS is unavailable, the nearest fire line supervisor or leader needs to take charge.

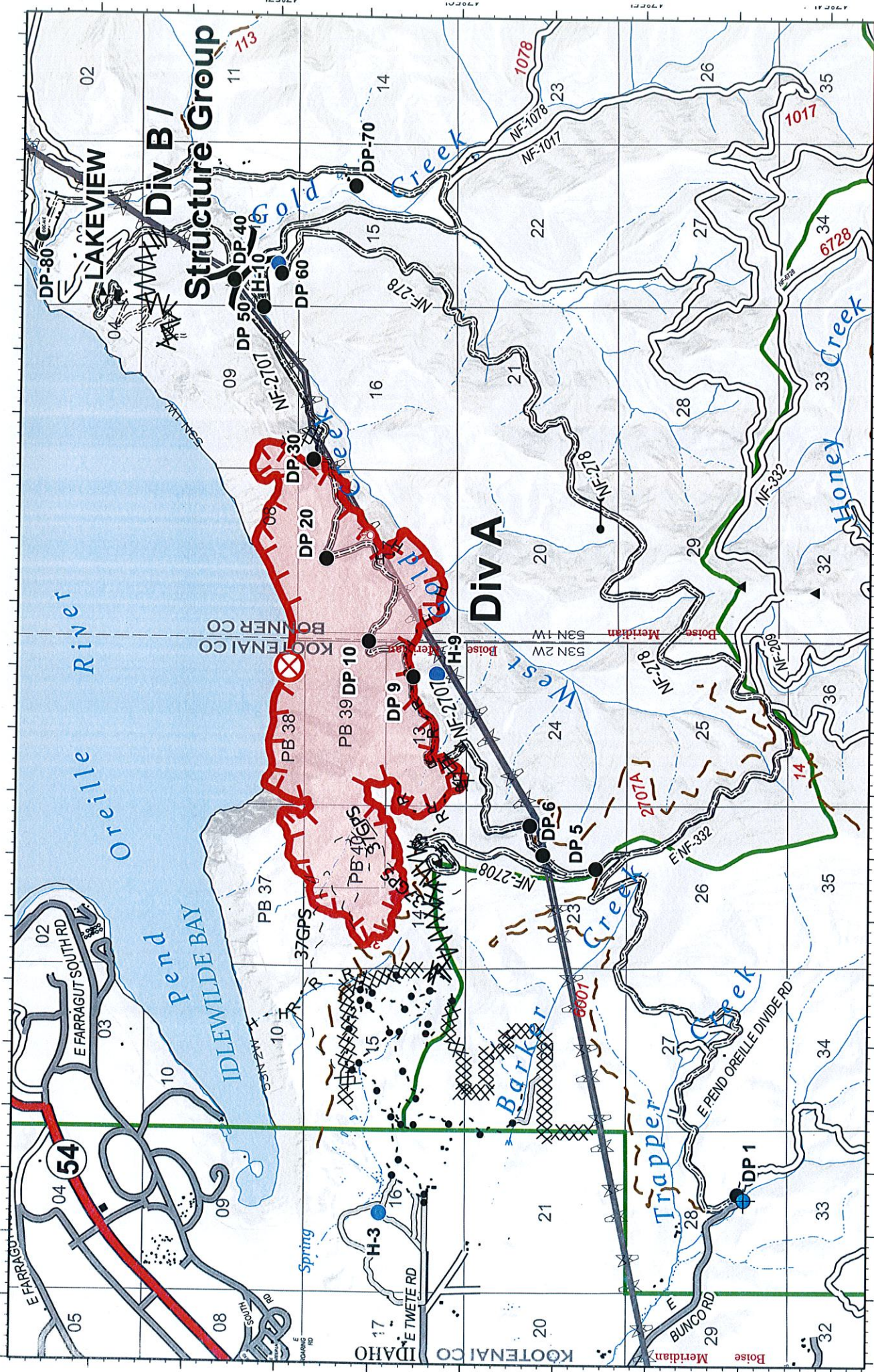
1. Clear all radio traffic on the Incident Command Channel--use to coordinate response with Coeur D' Alene Dispatch Communications via **Little Blacktail Repeater (chnl 8)**. Notify Coeur d' Alene Dispatch at the appropriate time with the information from the 8 line. **DO NOT USE NAMES**. Identify: a) The on-scene Point Of Contact (i.e. DIV, TFLD etc.); b) Describe the nature of the accident.
2. Obtain and facilitate nearest EMT to the scene. Identify to Communications medical personnel on site. Follow the 8 line in the IAP
3. Use Items 1-8 of the Incident Medical Report to communicate Situation to Couer D'alene Dispatch via Command. Report the situation to Operations and Safety.
4. Determine if the person can be transported by vehicle from thier location or if they need to be packaged and carried out. If the patient cannot be moved make contact with Air Operations for a short haul out with Fire Resources. Notify Operations, Safety if this happens. The patient will be transported to an approved heli spot. If the short haul was used on scene resources will be in contact with the short haul ship on Air to ground for that Division. Medical transport will be determined by EMS in the field. The appropriat transport will be requested through CDA Dispatch via command. If used the short haul ship will then then be in contact with medical transport on EMS-2 and the ground contact.
5. Determine if the patients injuries are in need of air transport or ground transport. Ground will be used for transport to approprieat facilaty by protocol. If Air transport is needed for a more significant injury it will be to Kootenai Health or Sacret Heart to be determined by Life Flight.

9. PREPARED BY The Safety Team

Brad Belmont 9/24/2020

10. REVIEWED BY

Mike Denney



- Value at Risk
- Wildfire Daily Fire Perimeter
- Line Break Completed
- Highlighted Manmade Feature
- Road Repair
- USFS Trails
- Highway
- Paved Roads
- FS Proclaimed Forest/Grassland
- Transmission_Lines
- Modified T37
- Uncontrolled Fire Edge
- Completed Dozer Line
- Completed Hand Line
- Road as Completed Line
- Access or Improved Road
- Dip Site
- Drop Point
- Fire Origin
- Gate
- Helispot
- Spot Fire
- Division Break
- Uncontrolled Fire Edge
- Completed Dozer Line
- Completed Hand Line
- Road as Completed Line
- Access or Improved Road

Fire perimeter updated from IR & GPS edits on SW edge on 09/23/2020 19:00

0 0.25 0.5 Miles

IAP MAP
 Bernard
 ID-IPF-000533
 September 25, 2020
 1375 acres

9/24/2020 18:10 hrs, jmb
 MAP 1000 7/20/19

8 Line Medical Incident Report

Medical Incident Report FOR A NON-EMERGENCY INCIDENT, WORK THROUGH CHAIN OF COMMAND TO REPORT AND TRANSPORT INJURED PERSONNEL AS NECESSARY. FOR A MEDICAL EMERGENCY: IDENTIFY ON-SCENE INCIDENT COMMANDER BY NAME AND POSITION AND ANNOUNCE "MEDICAL EMERGENCY" TO INITIATE RESPONSE FROM IMT COMMUNICATIONS/DISPATCH.

Use the following items to communicate situation to communications/dispatch.

1. **CONTACT COMMUNICATIONS / DISPATCH** (Verify correct frequency prior to starting report) Ex: "Communications, Div. Alpha. Stand-by for Emergency Traffic."
2. **INCIDENT STATUS:** Provide incident summary (including number of patients) and command structure. Ex: "Communications, I have a Red priority patient, unconscious, struck by a falling tree. Requesting air ambulance to Forest Road 1 at (Lat. / Long.) This will be the Trout Meadow Medical, IC is TFLD Jones. EMT Smith is providing medical care."

Severity of Emergency / Transport Priority	<input type="checkbox"/> RED / PRIORITY 1 Life or limb threatening injury or illness. Evacuation need is IMMEDIATE. Ex: Unconscious, difficulty breathing, bleeding severely, 2° – 3° burns more than 4 palm sizes, heat stroke, disoriented. <input type="checkbox"/> YELLOW / PRIORITY 2 Serious Injury or illness. Evacuation may be DELAYED if necessary. Ex: Significant trauma, unable to walk, 2° – 3° burns not more than 1-3 palm sizes. <input type="checkbox"/> GREEN / PRIORITY 3 Minor Injury or illness. Non-Emergency transport. Ex: Sprains, strains, minor heat-related illness.	
Nature of Injury or Illness & Mechanism of Injury		Brief Summary of Injury or Illness (Ex: Unconscious, Struck by Falling Tree)
Transport Request		Air Ambulance / ShortHaul/Hoist/ Ground Ambulance / Other
Patient Location		Descriptive Location & Lat. / Long. (WGS84)
Incident Name		Geographic Name + "Medical" (Ex: Trout Meadow Medical)
On-Scene Incident Commander		Name of on-scene IC of Incident within an Incident (Ex: TFLD Jones)
Patient Care		Name of Care Provider (Ex: EMT Smith)

3. INITIAL PATIENT ASSESSMENT: Complete this section for each patient as applicable (start with the most severe patient).

Patient Assessment: See IRPG page 106
Treatment:

4. TRANSPORT PLAN:

Evacuation Location (if different): (Descriptive Location (drop point, intersection, etc.) or Lat. / Long.) Patient's ETA to Evacuation Location:
Helispot / Extraction Site Size and Hazards:

5. ADDITIONAL RESOURCES / EQUIPMENT NEEDS:

Example: Paramedic/EMT, Crews, Immobilization Devices, AED, Oxygen, Trauma Bag, IV/Fluid(s), Splints, Rope rescue, Wheeled litter, HAZMAT, Extrication
--

6. COMMUNICATIONS: Identify State Air/Ground EMS Frequencies and Hospital Contacts as applicable.

Function	Channel Name	Receive (RX)	Tone/ NAC*	Transmit (TX)	Tone/ NAC
Command					
Air-Ground					
Tactical					

7. CONTINGENCY: Considerations: If primary options fail, what actions can be implemented in conjunction with primary evacuation method? Be thinking ahead.

8. ADDITIONAL INFORMATION:

Updates/Changes, etc. REMEMBER: • Confirm ETA's of resources ordered. • Act according to your level of training. • Be Alert. Keep Calm. Think Clearly. Act Decisively

UNITLOG	1. Incident Name Bernard	2. Date Prepared	3. Time Prepared
4. Unit Name/ Designators	5. Unit Leader (Name and Position)		6. Operational Period
7. Personnel Roster Assigned			
Name	ICS Position	Home Base	
8. Activity Log			
Time	Major Events		
9. Prepared by (Name and Position)			