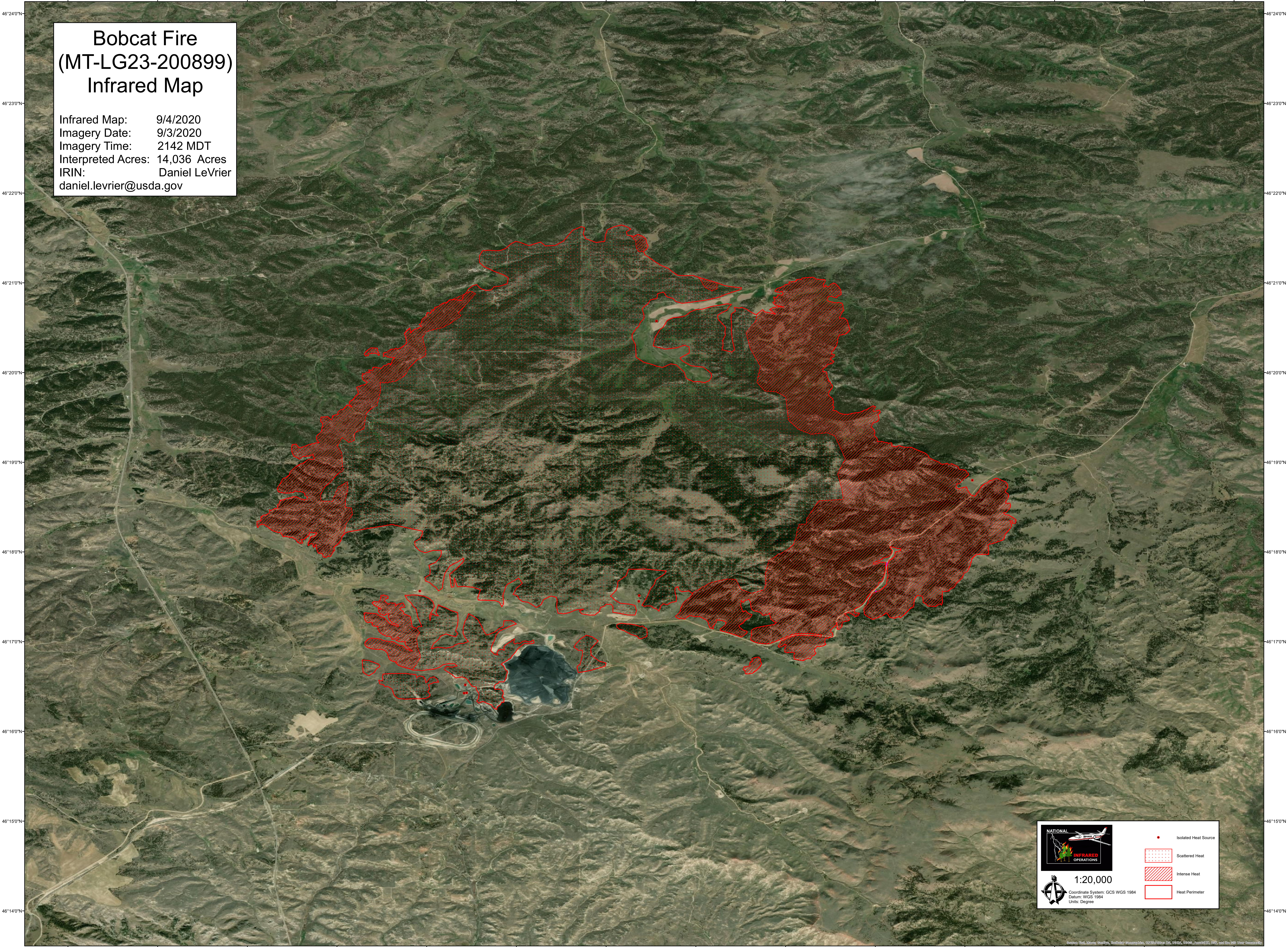



108°30'0"W 108°29'0"W 108°28'0"W 108°27'0"W 108°26'0"W 108°25'0"W 108°24'0"W 108°23'0"W 108°22'0"W 108°21'0"W 108°20'0"W 108°19'0"W 108°18'0"W 108°17'0"W

Bobcat Fire (MT-LG23-200899) Infrared Map

Infrared Map: 9/4/2020
Imagery Date: 9/3/2020
Imagery Time: 2142 MDT
Interpreted Acres: 14,036 Acres
IRIN: Daniel LeVrier
daniel.levrier@usda.gov

1:20,000
Coordinate System: GCS WGS 1984
Datum: WGS 1984
Units: Degree

- Isolated Heat Source
- Scattered Heat
- Intense Heat
- Heat Perimeter

108°30'0"W 108°29'0"W 108°28'0"W 108°27'0"W 108°26'0"W 108°25'0"W 108°24'0"W 108°23'0"W 108°22'0"W 108°21'0"W 108°20'0"W 108°19'0"W 108°18'0"W 108°17'0"W