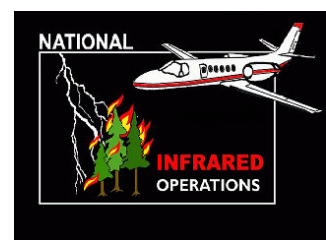


108°29'0"W 108°28'0"W 108°27'0"W 108°26'0"W 108°25'0"W 108°24'0"W 108°23'0"W 108°22'0"W 108°21'0"W 108°20'0"W 108°19'0"W 108°18'0"W 108°17'0"W 108°16'0"W





Bobcat Fire (MT-LG23-200899) Infrared Map

Infrared Map: 9/6/2020
Imagery Date: 9/5/2020
Imagery Time: 2158 MDT
Interpreted Acres: 26,463 Acres
IRIN: Daniel LeVrier



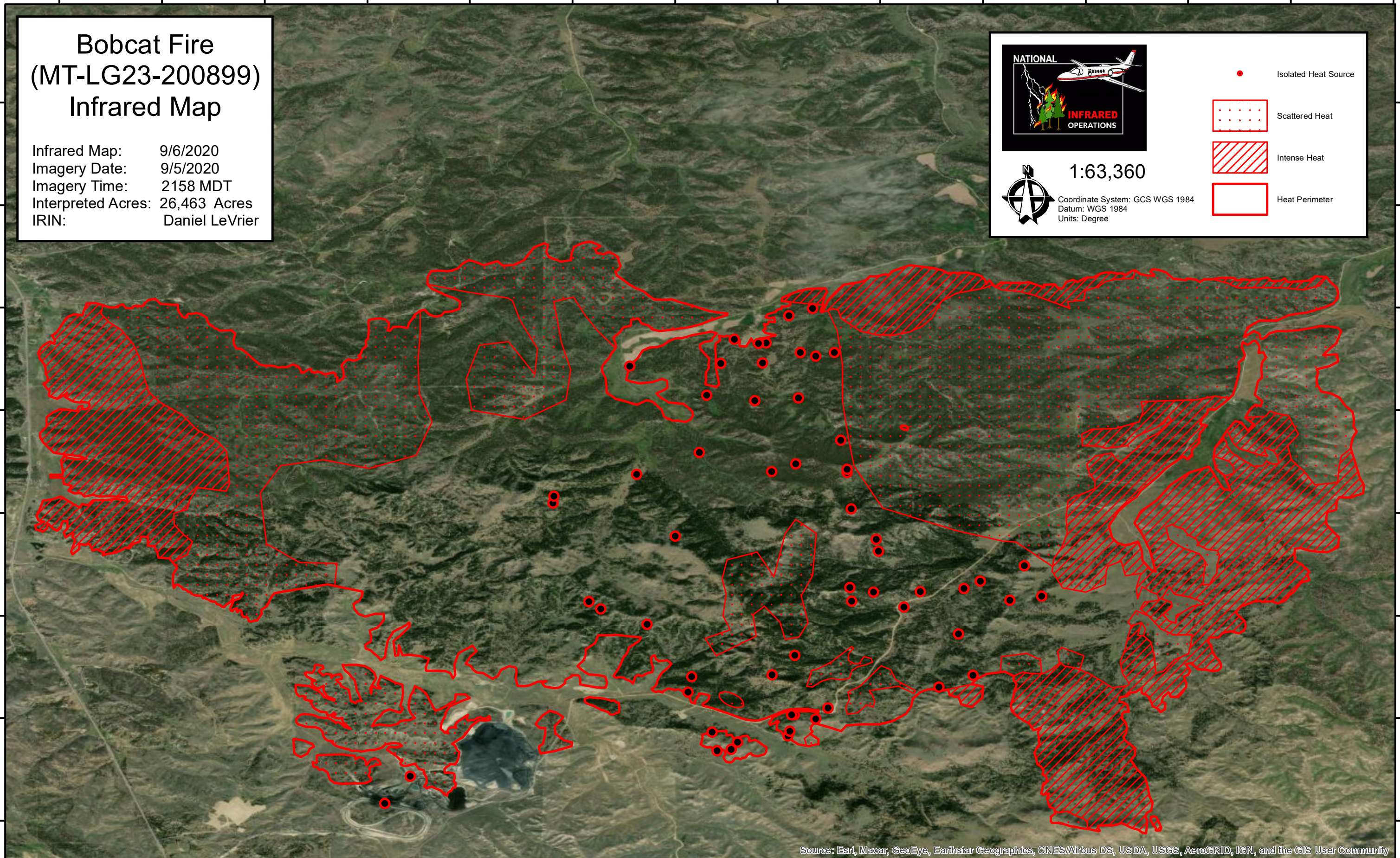
1:63,360

Coordinate System: GCS WGS 1984
Datum: WGS 1984
Units: Degree

-  Isolated Heat Source
-  Scattered Heat
-  Intense Heat
-  Heat Perimeter

46°23'0"N
46°22'0"N
46°21'0"N
46°20'0"N
46°19'0"N
46°18'0"N
46°17'0"N
46°16'0"N

46°23'0"N
46°22'0"N
46°21'0"N
46°20'0"N
46°19'0"N
46°18'0"N
46°17'0"N
46°16'0"N



Source: Esri, Maxar, GeoEye, Earthstar Geographics, CNES/Airbus DS, USDA, USGS, AeroGRID, IGN, and the GIS User Community

108°29'0"W 108°28'0"W 108°27'0"W 108°26'0"W 108°25'0"W 108°24'0"W 108°23'0"W 108°22'0"W 108°21'0"W 108°20'0"W 108°19'0"W 108°18'0"W 108°17'0"W 108°16'0"W