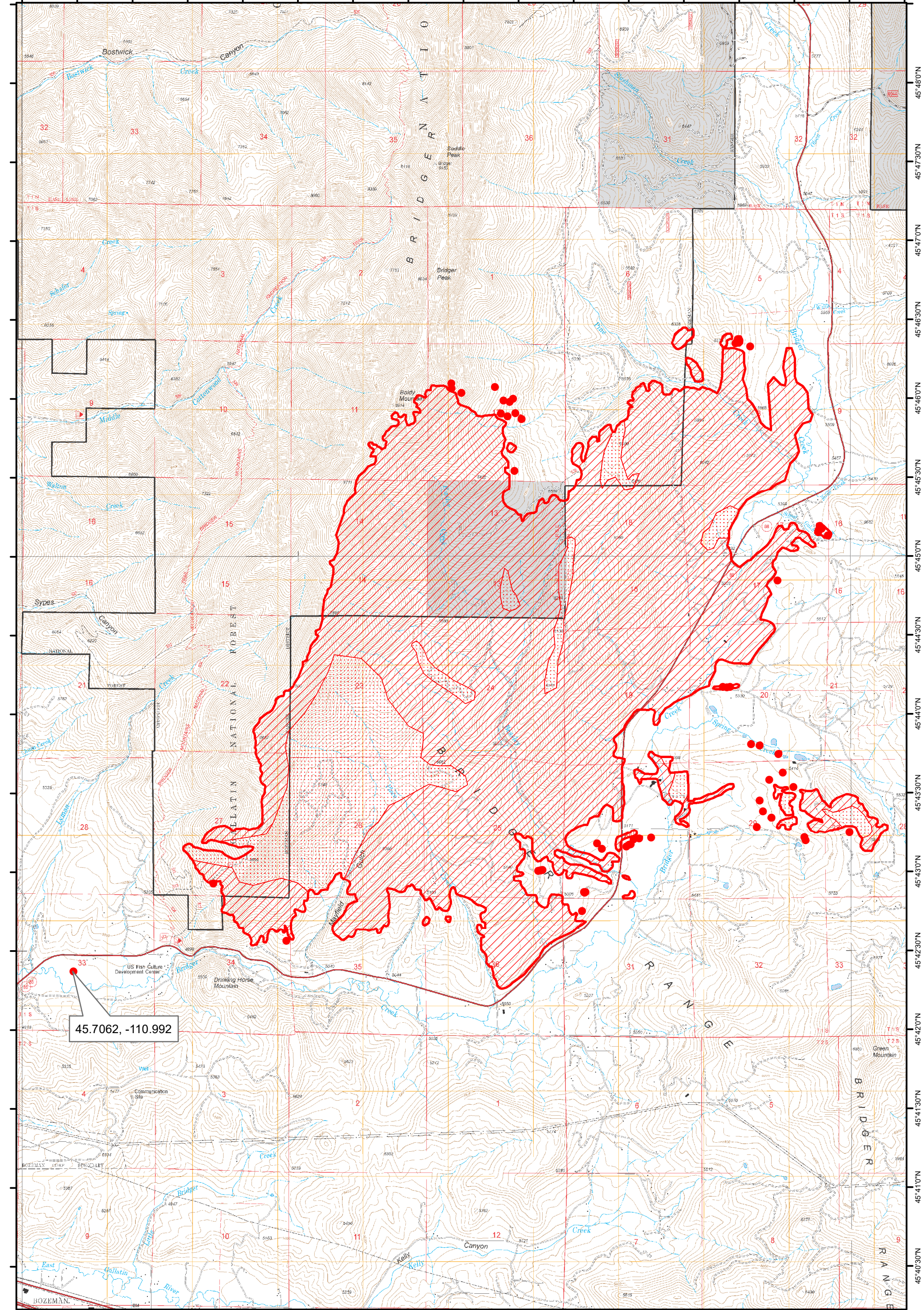
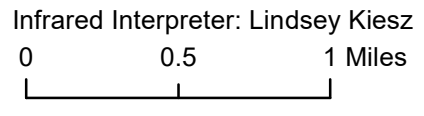


111°0'0"W 110°59'30"W 110°59'0"W 110°58'30"W 110°58'0"W 110°57'30"W 110°57'0"W 110°56'30"W 110°56'0"W 110°55'30"W 110°55'0"W 110°54'30"W 110°54'0"W 110°53'30"W 110°53'0"W 110°52'30"W 110°52'0"W



45°48'0"N
45°47'30"N
45°47'0"N
45°46'30"N
45°46'0"N
45°45'30"N
45°45'0"N
45°44'30"N
45°44'0"N
45°43'30"N
45°43'0"N
45°42'30"N
45°42'0"N
45°41'30"N
45°41'0"N
45°40'30"N

Bridger Foothills MT-CGF-000214
Infrared Heat Sources 9/5/2020 2126 MDT
6,998 Acres
 Infrared Interpreter: Lindsey Kiesz



- Isolated Heat Source
- Intense Heat
- Scattered Heat
- Heat Perimeter