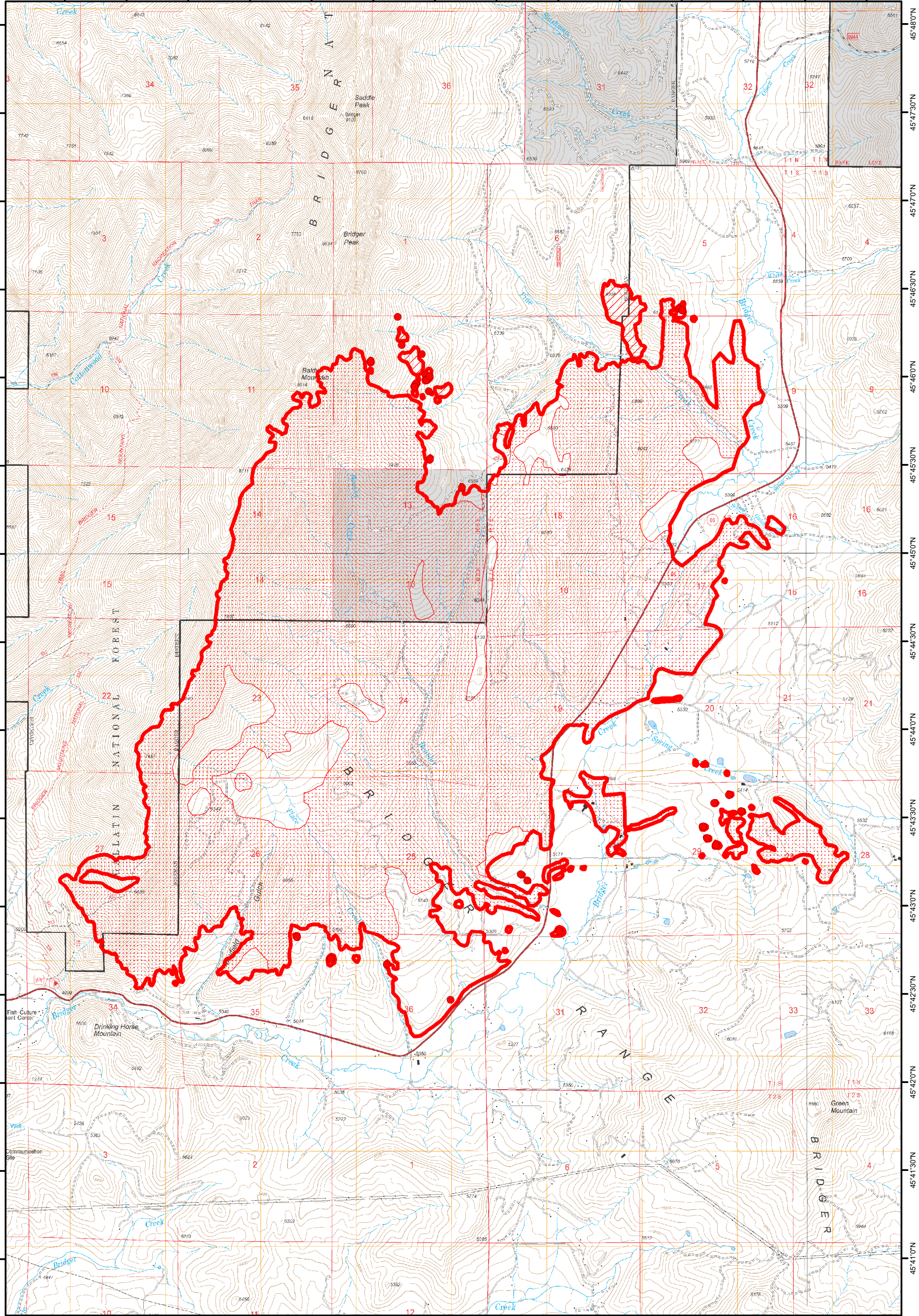


110°58'30"W 110°58'0"W 110°57'30"W 110°57'0"W 110°56'30"W 110°56'0"W 110°55'30"W 110°55'0"W 110°54'30"W 110°54'0"W 110°53'30"W 110°53'0"W 110°52'30"W 110°52'0"W

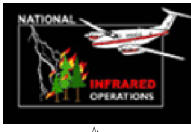


45°48'0"N  
45°47'30"N  
45°47'0"N  
45°46'30"N  
45°46'0"N  
45°45'30"N  
45°45'0"N  
45°44'30"N  
45°44'0"N  
45°43'30"N  
45°43'0"N  
45°42'30"N  
45°42'0"N  
45°41'30"N  
45°41'0"N

**Bridger Foothills MT-CGF-000214**  
**Infrared Heat Sources 9/6/2020 2202 MDT**  
**7138 Acres**

Infrared Interpreter: Lindsey Kiesz

0 0.5 1 Miles



- Isolated Heat Source
- Scattered Heat
- Intense Heat
- Heat Perimeter