

BRIDGER FOOTHILLS MT-CGF-000214



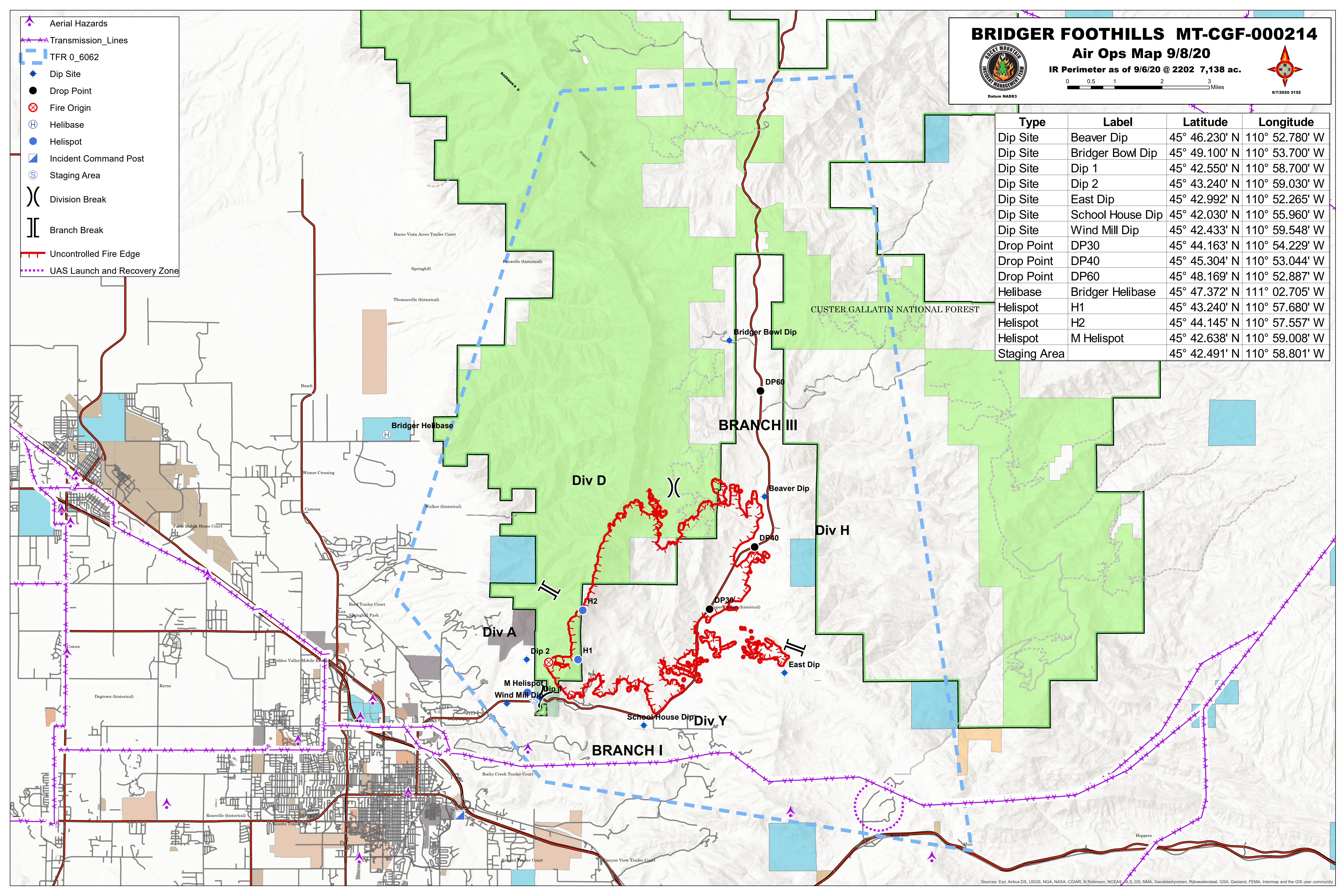
Air Ops Map 9/8/20

IR Perimeter as of 9/6/20 @ 2202 7,138 ac.



- Aerial Hazards
- Transmission_Lines
- TFR 0_6062
- Dip Site
- Drop Point
- Fire Origin
- Helibase
- Helispot
- Incident Command Post
- Staging Area
- Division Break
- Branch Break
- Uncontrolled Fire Edge
- UAS Launch and Recovery Zone

Type	Label	Latitude	Longitude
Dip Site	Beaver Dip	45° 46.230' N	110° 52.780' W
Dip Site	Bridger Bowl Dip	45° 49.100' N	110° 53.700' W
Dip Site	Dip 1	45° 42.550' N	110° 58.700' W
Dip Site	Dip 2	45° 43.240' N	110° 59.030' W
Dip Site	East Dip	45° 42.992' N	110° 52.265' W
Dip Site	School House Dip	45° 42.030' N	110° 55.960' W
Dip Site	Wind Mill Dip	45° 42.433' N	110° 59.548' W
Drop Point	DP30	45° 44.163' N	110° 54.229' W
Drop Point	DP40	45° 45.304' N	110° 53.044' W
Drop Point	DP60	45° 48.169' N	110° 52.887' W
Helibase	Bridger Helibase	45° 47.372' N	111° 02.705' W
Helispot	H1	45° 43.240' N	110° 57.680' W
Helispot	H2	45° 44.145' N	110° 57.557' W
Helispot	M Helispot	45° 42.638' N	110° 59.008' W
Staging Area		45° 42.491' N	110° 58.801' W



Sources: Esri, Airbus DS, USGS, NGA, NASA, CGIAR, N Robinson, NCEAS, NLS, OS, NMA, Geodatasystemen, Rijkswaterstaat, GSA, Geoland, FEMA, Intermap and the GIS user community