

110°59'W

110°58'W

110°57'W

110°56'W

110°55'W

110°54'W

# BRIDGER FOOTHILLS MT-CGF-000214

## Division D 9/9/20

IR Perimeter 9/6/20 @ 2202 7,138 ac.



0 0.25 0.5 0.75 1 Miles



NB 9/8/20 1800



- Dip Site
- Drop Point
- Fire Origin
- Helispot
- Division Break
- Branch Break
- Building Footprints
- Uncontrolled Fire Edge
- Bridger Bowl Ski Lifts
- Bridger Bowl Roads
- Bridger Bowl Permit Area
- USFS Fire History

### BRANCH III

### Div H

### Div D

### Div A

### Dip 2

### H2

▲ Mount Baldy 7,106

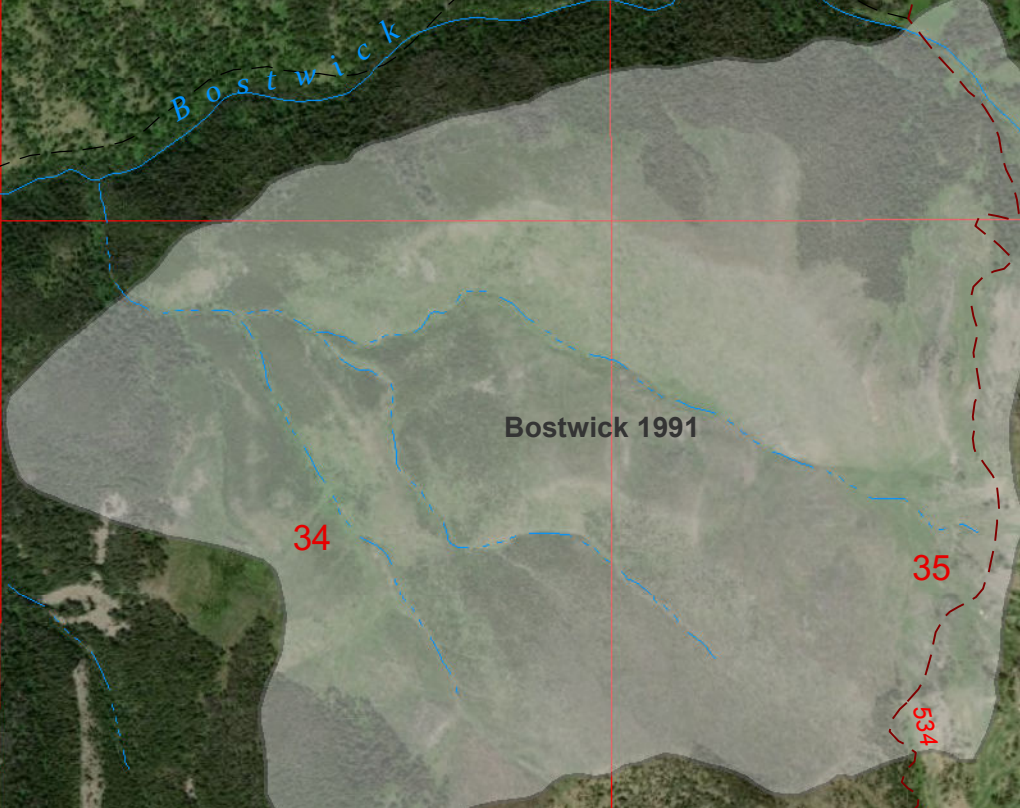
### H1

### DP30

Upper Bridger (historical)

86

# CUSTER GALLATIN NATIONAL FOREST



Bostwick 1991

Bostwick 1991

▲ Saddle Peak 9,134

▲ Bridger Peak 8,579

▲ Baldy Mountain 8,829

▲ Mount Baldy 7,106

Upper Bridger (historical)

86

