

111°1'W 111°0'W 110°59'W 110°58'W 110°57'W 110°56'W

BRIDGER FOOTHILLS MT-CGF-000214

Division A 9/10/20

Perimeter as of 9/7/20 @ 2100 8,224 ac.



0 0.25 0.5 0.75 1 Miles



NB 9/9/20 2030

TER GALLATIN NATIONAL

BRANCH III

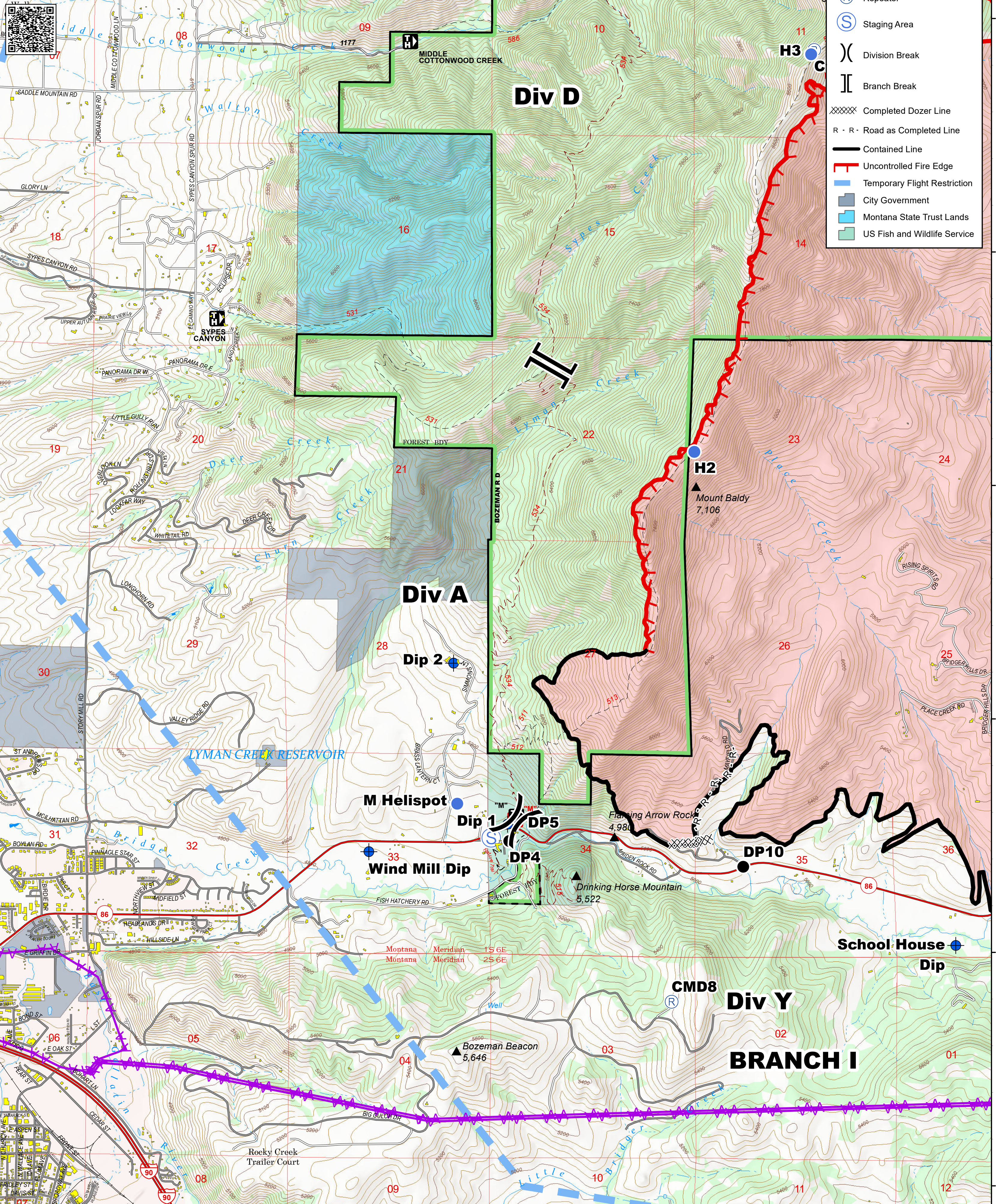
Div D

Div A

Div Y

BRANCH I

- Powerlines
- Building Footprints
- Dip Site
- Helispot
- Drop Point
- Repeater
- Staging Area
- Division Break
- Branch Break
- Completed Dozer Line
- Road as Completed Line
- Contained Line
- Uncontrolled Fire Edge
- Temporary Flight Restriction
- City Government
- Montana State Trust Lands
- US Fish and Wildlife Service



45°46'N 45°45'N 45°44'N 45°43'N 45°42'N