

110°59'W

110°58'W

110°57'W

110°56'W

110°55'W

110°54'W

BRIDGER FOOTHILLS MT-CGF-000214

Div D 9/12/20

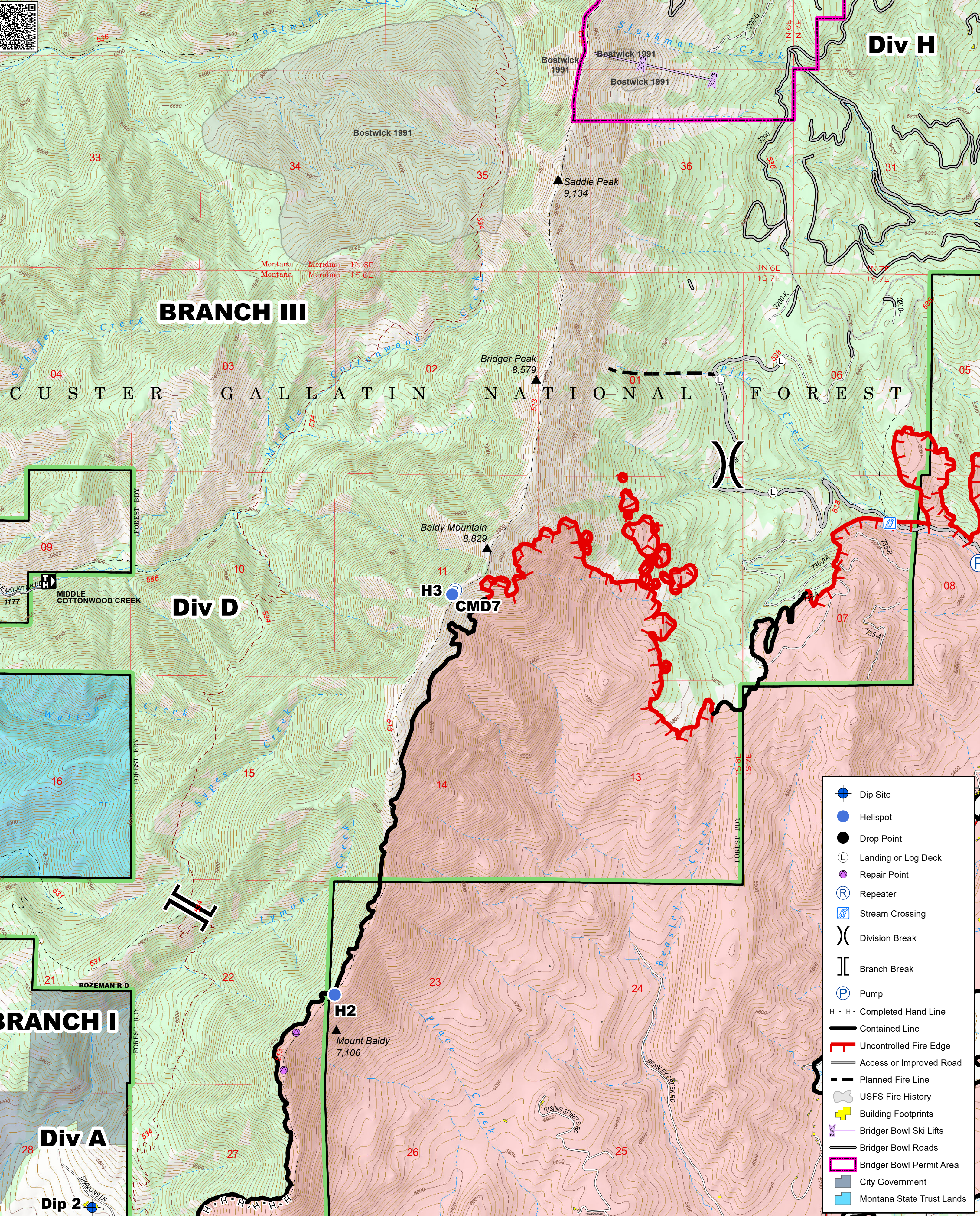
Perimeter as of 9/7/20 @ 2100 8,224 ac.



0 0.25 0.5 0.75 1 Miles



NB 9/11/20 2030



Div H

BRANCH III

CUSTER GALLATIN NATIONAL FOREST

Div D

BRANCH I

Div A

Dip 2

- Dip Site
- Helispot
- Drop Point
- Landing or Log Deck
- Repair Point
- Repeater
- Stream Crossing
- Division Break
- Branch Break
- Pump
- H · H · Completed Hand Line
- Contained Line
- Uncontrolled Fire Edge
- Access or Improved Road
- Planned Fire Line
- USFS Fire History
- Building Footprints
- Bridger Bowl Ski Lifts
- Bridger Bowl Roads
- Bridger Bowl Permit Area
- City Government
- Montana State Trust Lands