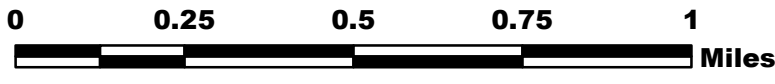


111°1'W 111°0'W 110°59'W 110°58'W 110°57'W 110°56'W

BRIDGER FOOTHILLS MT-CGF-000214

Div A 9/13/20

Perimeter as of 9/7/20 @ 2100 8,224 ac.



NB 9/12/20 1330

TER GALLATIN NATIONAL

BRANCH III

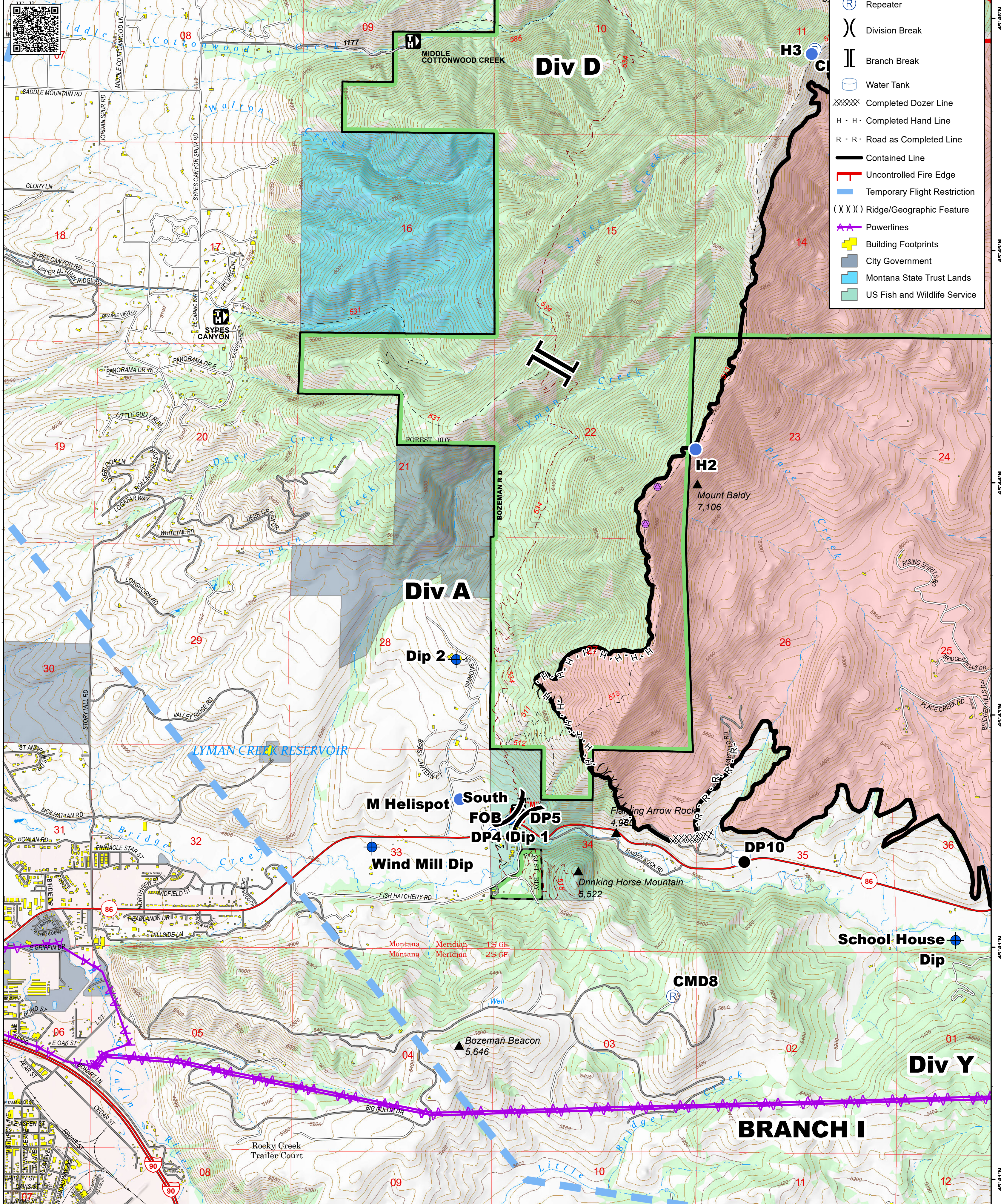
Div D

Div A

Div Y

BRANCH I

- Camp
- Dip Site
- Helispot
- Drop Point
- Repair Point
- Repeater
- Division Break
- Branch Break
- Water Tank
- Completed Dozer Line
- Completed Hand Line
- Road as Completed Line
- Contained Line
- Uncontrolled Fire Edge
- Temporary Flight Restriction
- Ridge/Geographic Feature
- Powerlines
- Building Footprints
- City Government
- Montana State Trust Lands
- US Fish and Wildlife Service



45°46'N
45°45'N
45°44'N
45°43'N
45°42'N