

110°59'W

110°58'W

110°57'W

110°56'W

110°55'W

110°54'W

# BRIDGER FOOTHILLS MT-CGF-000214

## Div D 9/13/20

Perimeter as of 9/7/20 @ 2100 8,224 ac.

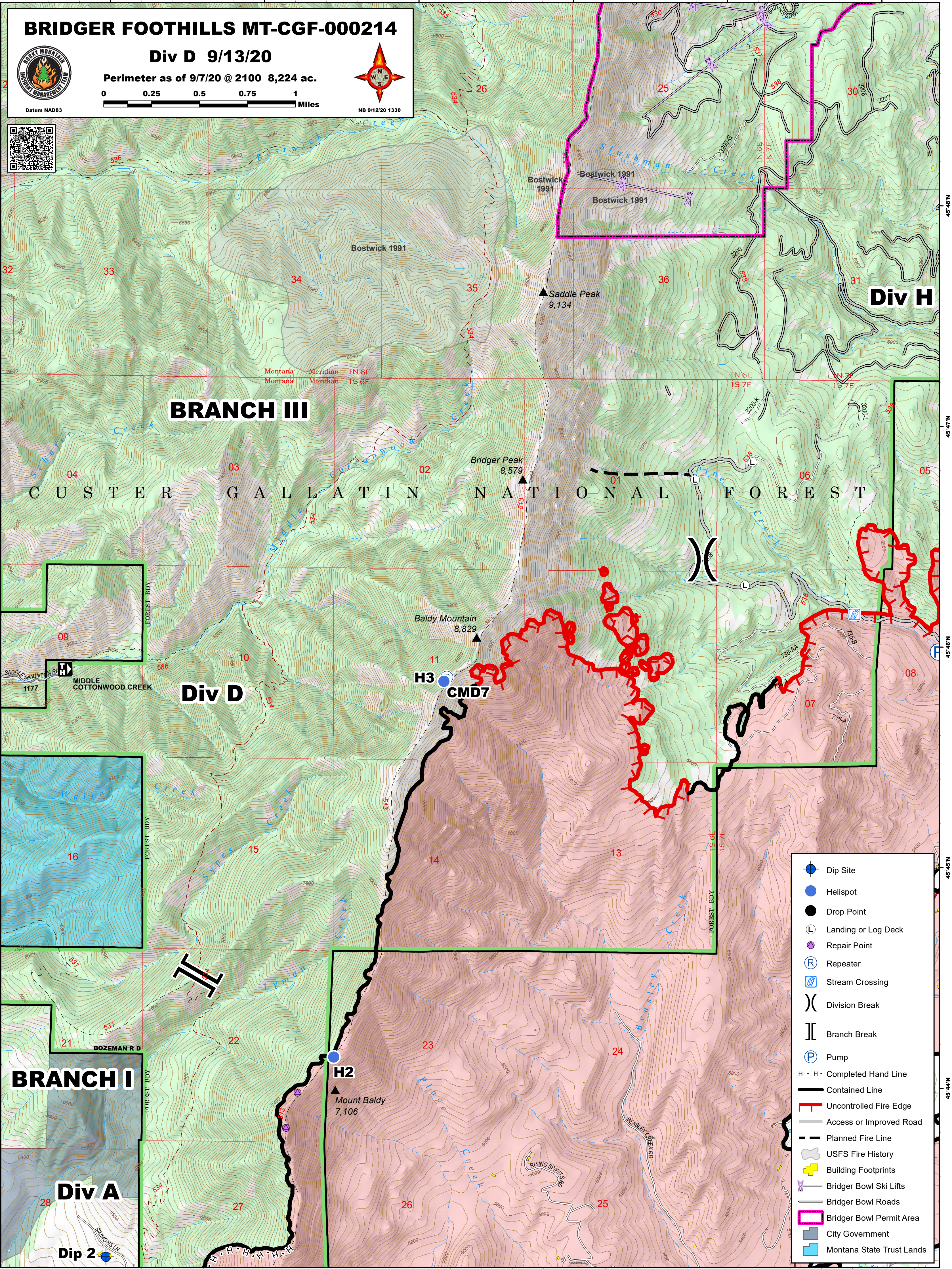


0 0.25 0.5 0.75 1 Miles



NB 9/12/20 1330

Datum NAD83



### BRANCH III

## CUSTER GALLATIN NATIONAL FOREST

### Div H

### Div D

### BRANCH I

### Div A

### Dip 2

- Dip Site
- Helispot
- Drop Point
- Landing or Log Deck
- Repair Point
- Repeater
- Stream Crossing
- Division Break
- Branch Break
- Pump
- H · H · Completed Hand Line
- Contained Line
- Uncontrolled Fire Edge
- Access or Improved Road
- Planned Fire Line
- USFS Fire History
- Building Footprints
- Bridger Bowl Ski Lifts
- Bridger Bowl Roads
- Bridger Bowl Permit Area
- City Government
- Montana State Trust Lands