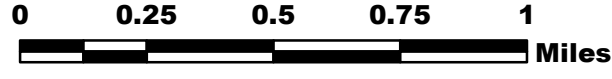


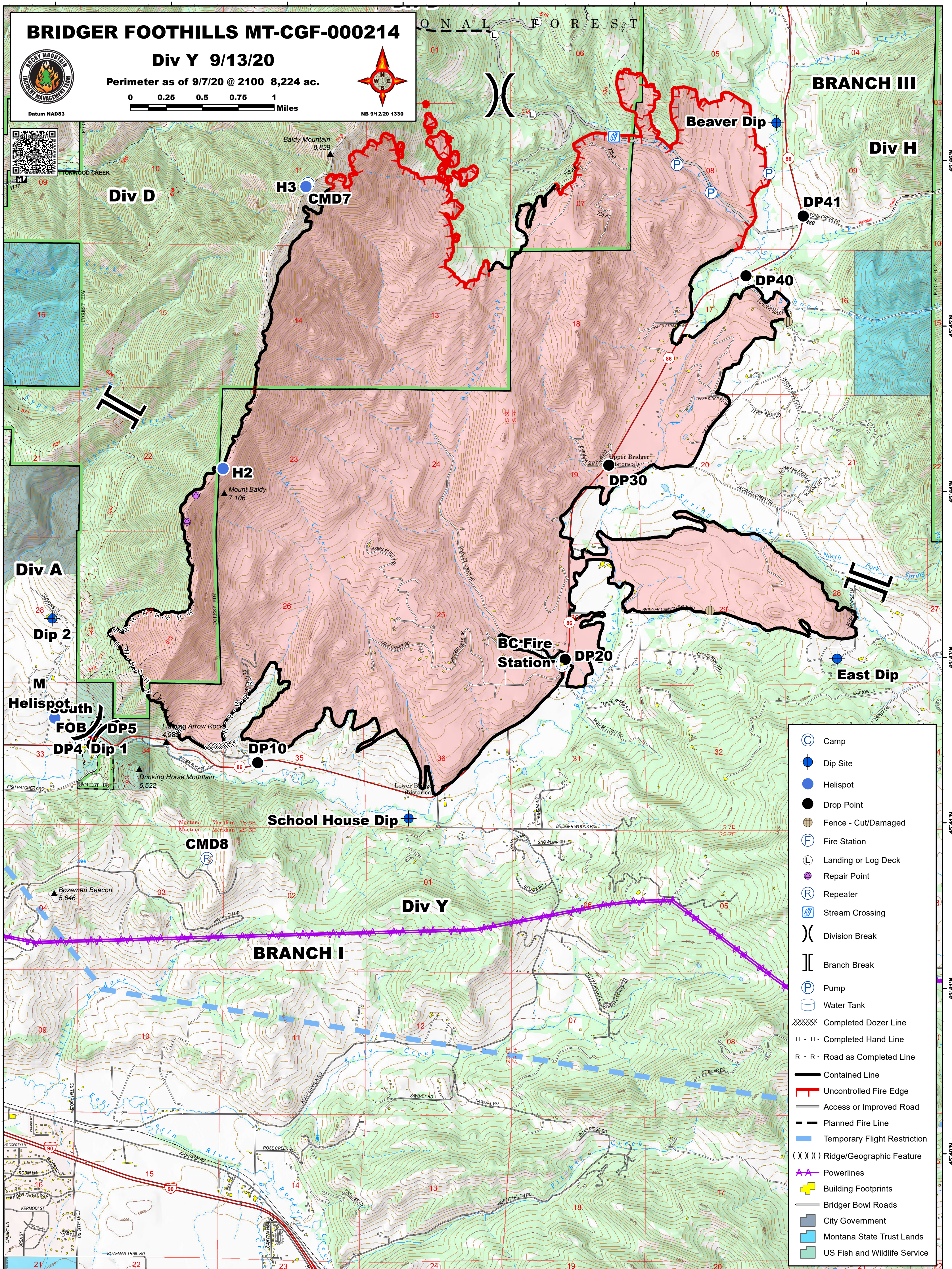
BRIDGER FOOTHILLS MT-CGF-000214

Div Y 9/13/20

Perimeter as of 9/7/20 @ 2100 8,224 ac.



NB 9/12/20 1330



BRANCH III

Div H

Div D

H3
CMD7

Beaver Dip

DP41

DP40

DP30

BC Fire Station
DP20

East Dip

Div A

Dip 2

Helispot
FOB
DP5

DP4
Dip 1

DP10

School House Dip

CMD8

Div Y

BRANCH I

- Camp
- Dip Site
- Helispot
- Drop Point
- Fence - Cut/Damaged
- Fire Station
- Landing or Log Deck
- Repair Point
- Repeater
- Stream Crossing
- Division Break
- Branch Break
- Pump
- Water Tank
- Completed Dozer Line
- H - H - Completed Hand Line
- R - R - Road as Completed Line
- Contained Line
- Uncontrolled Fire Edge
- Access or Improved Road
- Planned Fire Line
- Temporary Flight Restriction
- Ridge/Geographic Feature
- Powerlines
- Building Footprints
- Bridger Bowl Roads
- City Government
- Montana State Trust Lands
- US Fish and Wildlife Service