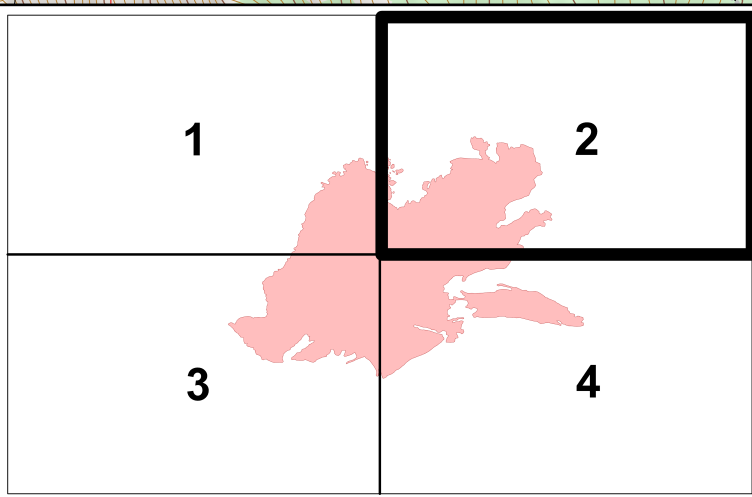
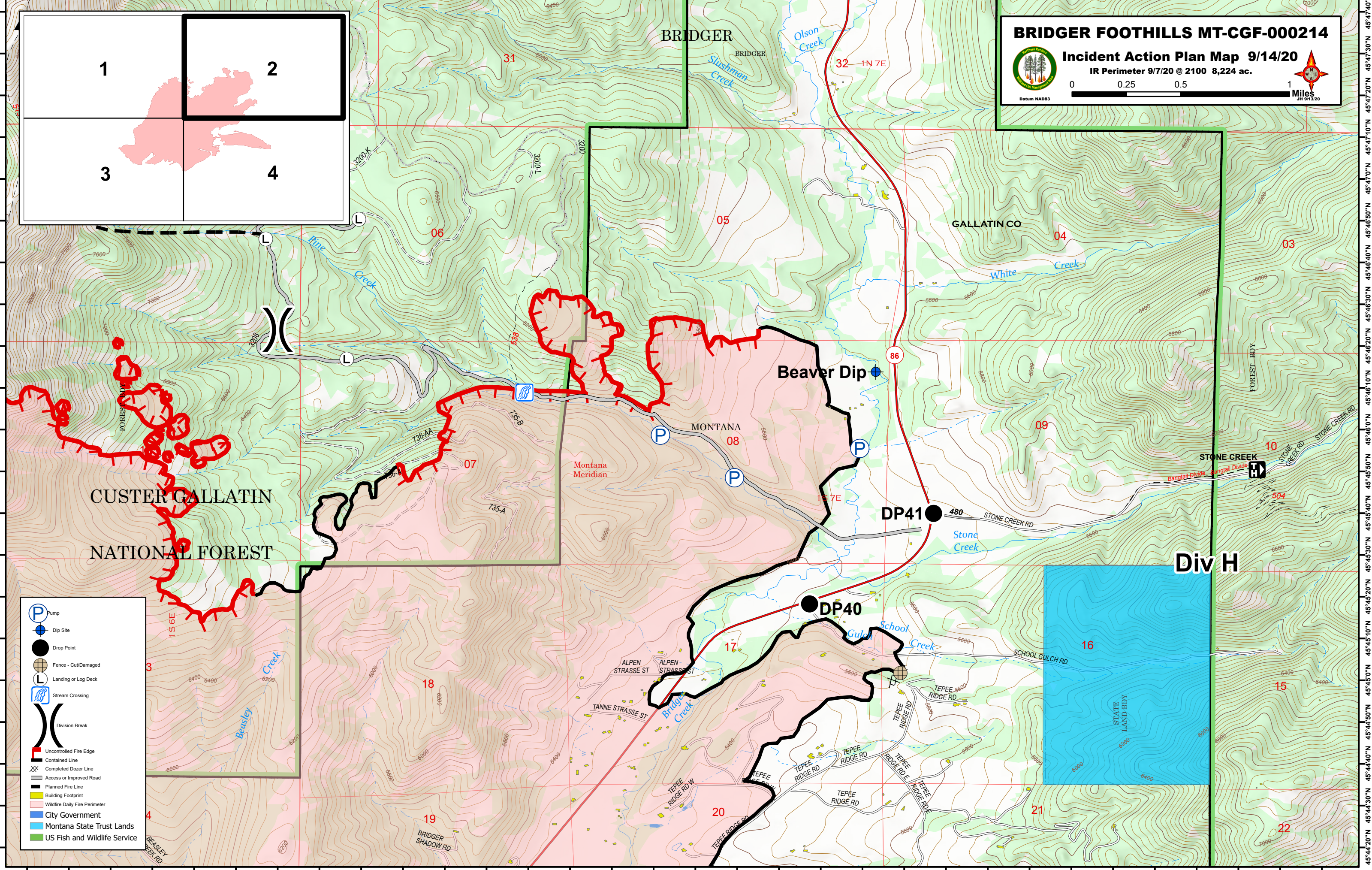


110°56'10"W 110°56'0"W 110°55'50"W 110°55'40"W 110°55'30"W 110°55'20"W 110°55'10"W 110°55'0"W 110°54'50"W 110°54'40"W 110°54'30"W 110°54'20"W 110°54'10"W 110°54'0"W 110°53'50"W 110°53'40"W 110°53'30"W 110°53'20"W 110°53'10"W 110°53'0"W 110°52'50"W 110°52'40"W 110°52'30"W 110°52'20"W 110°52'10"W 110°52'0"W 110°51'50"W 110°51'40"W 110°51'30"W 110°51'20"W 110°51'10"W 110°51'0"W



BRIDGER FOOTHILLS MT-CGF-000214
Incident Action Plan Map 9/14/20
 IR Perimeter 9/7/20 @ 2100 8,224 ac.

Datum NAD83
 Miles
 JN 9/13/20



- Pump
- Dip Site
- Drop Point
- Fence - Cut/Damaged
- Landing or Log Deck
- Stream Crossing
- Division Break
- Uncontrolled Fire Edge
- Contained Line
- Completed Dozer Line
- Access or Improved Road
- Planned Fire Line
- Building Footprint
- Wildfire Daily Fire Perimeter
- City Government
- Montana State Trust Lands
- US Fish and Wildlife Service

45°44'20"N 45°44'30"N 45°44'40"N 45°44'50"N 45°45'0"N 45°45'10"N 45°45'20"N 45°45'30"N 45°45'40"N 45°45'50"N 45°46'0"N 45°46'10"N 45°46'20"N 45°46'30"N 45°46'40"N 45°46'50"N 45°47'0"N 45°47'10"N 45°47'20"N 45°47'30"N 45°47'40"N