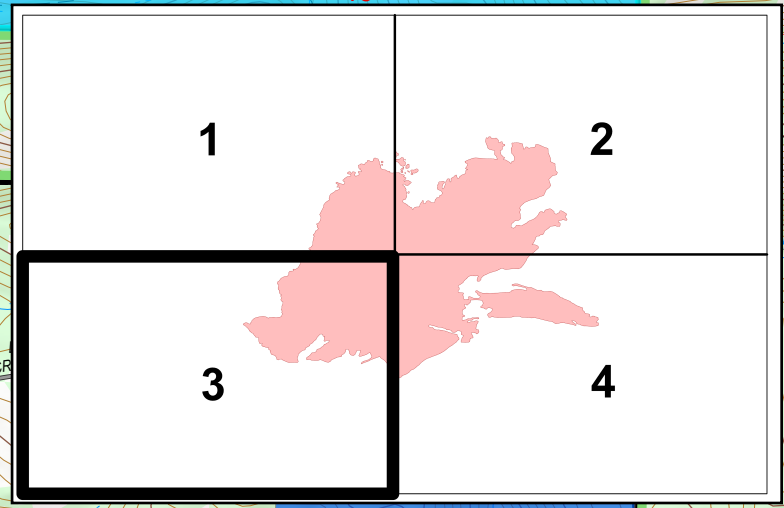
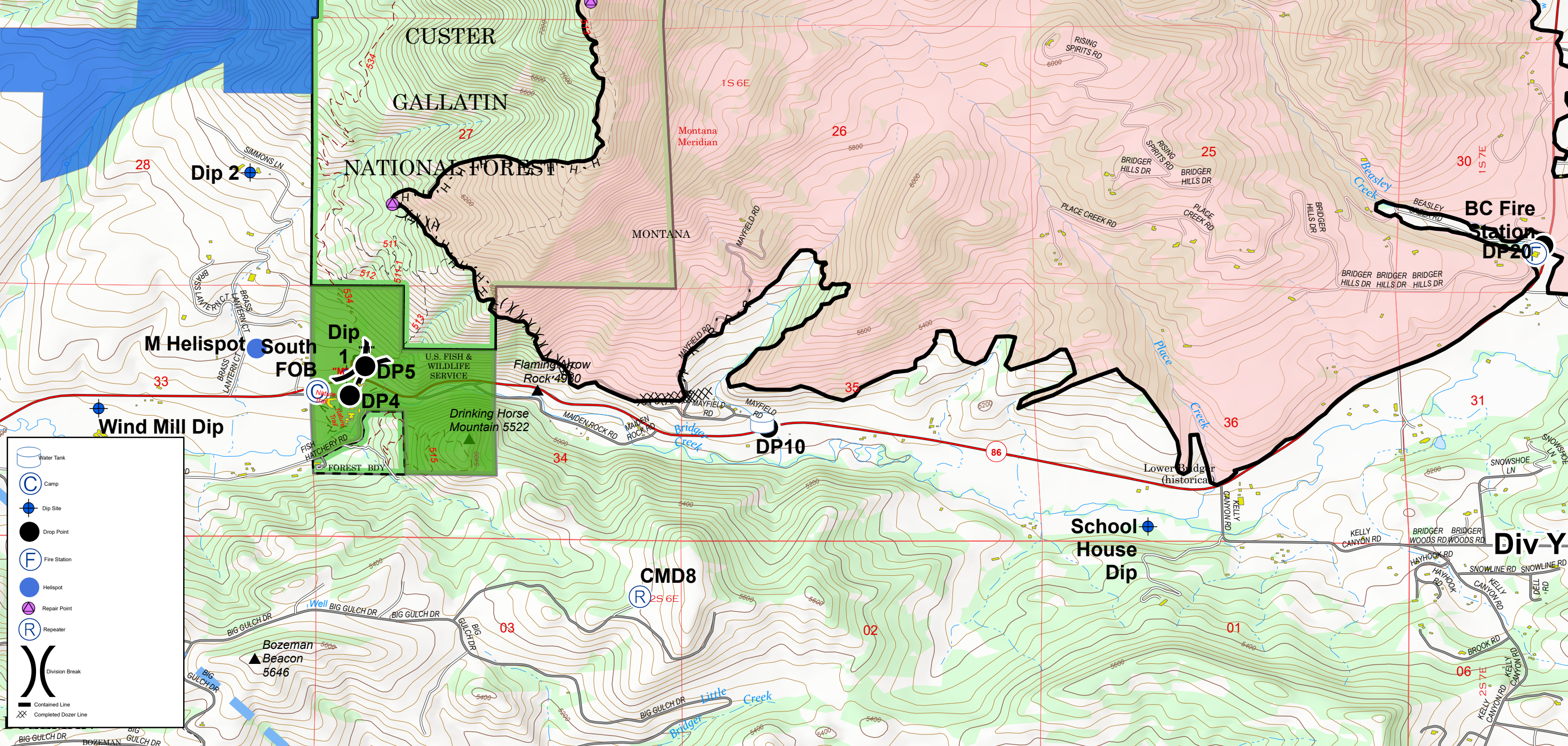


110°59'50"W 110°59'30"W 110°59'10"W 110°59'0"W 110°58'50"W 110°58'40"W 110°58'30"W 110°58'20"W 110°58'10"W 110°58'0"W 110°57'50"W 110°57'40"W 110°57'30"W 110°57'20"W 110°57'10"W 110°57'0"W 110°56'50"W 110°56'40"W 110°56'30"W 110°56'20"W 110°56'10"W 110°56'0"W 110°55'50"W 110°55'40"W 110°55'30"W 110°55'20"W 110°55'10"W 110°55'0"W 110°54'50"W 110°54'40"W



BRIDGER FOOTHILLS MT-CGF-000214
Incident Action Plan Map 9/14/20
IR Perimeter 9/7/20 @ 2100 8,224 ac.



- Water Tank
- Camp
- Dip Site
- Drop Point
- Fire Station
- Helispot
- Repair Point
- Repeater
- Division Break
- Contained Line
- Completed Dozer Line

110°59'50"W 110°59'30"W 110°59'10"W 110°59'0"W 110°58'50"W 110°58'40"W 110°58'30"W 110°58'20"W 110°58'10"W 110°58'0"W 110°57'50"W 110°57'40"W 110°57'30"W 110°57'20"W 110°57'10"W 110°57'0"W 110°56'50"W 110°56'40"W 110°56'30"W 110°56'20"W 110°56'10"W 110°56'0"W 110°55'50"W 110°55'40"W 110°55'30"W 110°55'20"W 110°55'10"W 110°55'0"W 110°54'50"W 110°54'40"W