

110°59'W 110°59'W 110°59'W 110°58'W 110°58'W 110°58'W 110°57'W 110°57'W 110°57'W 110°56'W 110°56'W 110°56'W 110°55'W 110°55'W 110°55'W 110°54'W 110°54'W 110°54'W 110°53'W 110°53'W 110°53'W 110°52'W 110°52'W 110°52'W

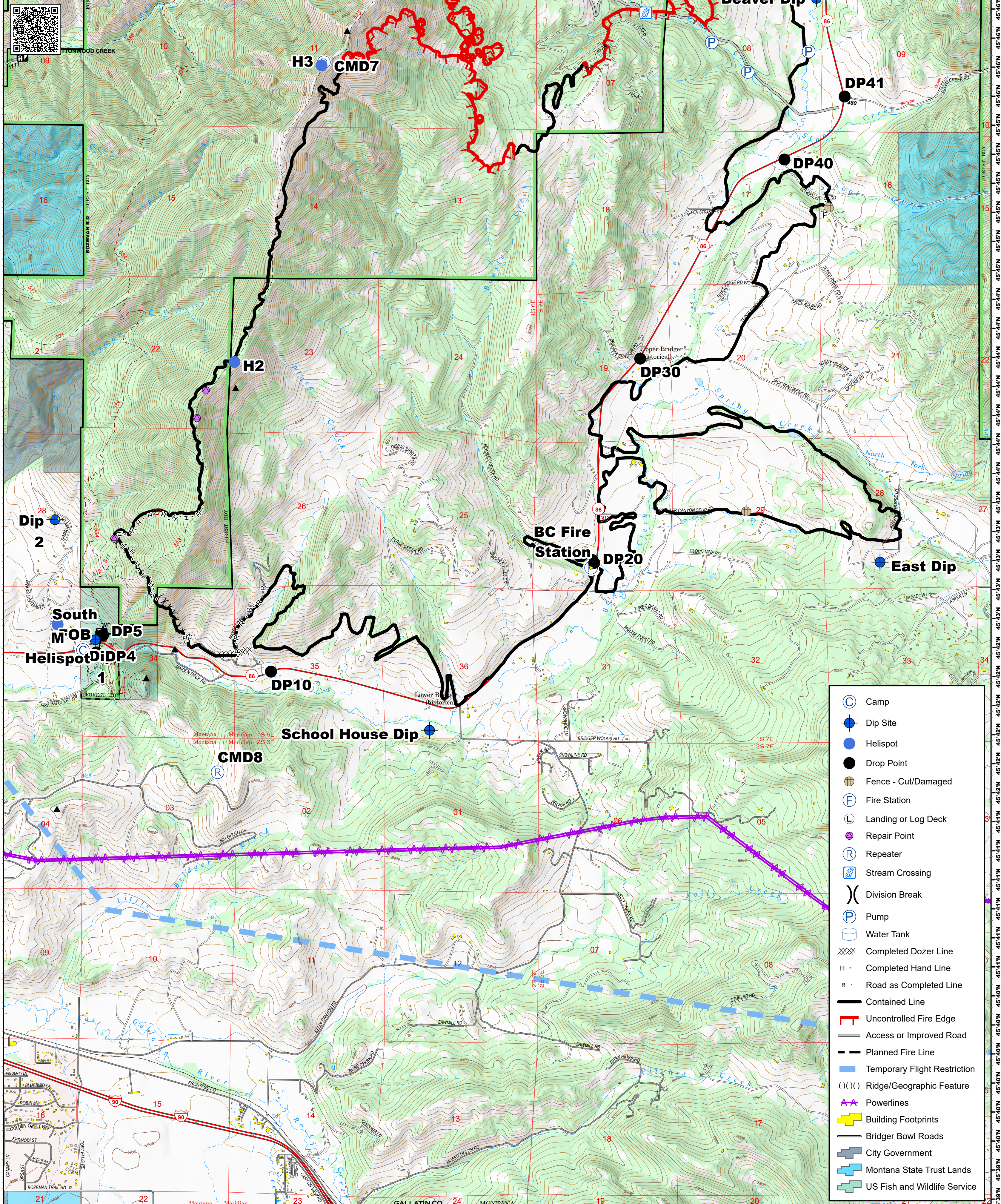
BRIDGER FOOTHILLS MT-CGF-000214

Div Y 9/14/2020

Perimeter as of 9/7/20 @ 2100 8,224 ac.



0 0.25 0.5 0.75 1 Miles



- Camp
- Dip Site
- Helispot
- Drop Point
- Fence - Cut/Damaged
- Fire Station
- Landing or Log Deck
- Repair Point
- Repeater
- Stream Crossing
- Division Break
- Pump
- Water Tank
- Completed Dozer Line
- Completed Hand Line
- Road as Completed Line
- Contained Line
- Uncontrolled Fire Edge
- Access or Improved Road
- Planned Fire Line
- Temporary Flight Restriction
- Ridge/Geographic Feature
- Powerlines
- Building Footprints
- Bridger Bowl Roads
- City Government
- Montana State Trust Lands
- US Fish and Wildlife Service

Montana Meridian 21 22 23 24 MONTANA 19 20